

Converting Colors

YUV(70.5610, -0.7696, 13.5400)

Have a look what the booklet for
YUV(70.5610, -0.7696, 13.5400)
contains.

YUV(70.5610, -0.7696, 13.5400)	3
<i>Conversions</i>	4
<i>Details</i>	6
<i>Harmonies</i>	12
<i>Previews</i>	24
<i>Color Blindness Simulation</i>	28
<i>CSS Examples</i>	31

Color

**YUV(70.5610, -0.7696,
13.5400)**

Conversions

Conversions Part 1

Format	Color
Hex	563F45
RGB	86, 63, 69
RGB Percent	34%, 25%, 27%
CMY	0.6627, 0.7529, 0.7294
CMYK	0.00, 0.27, 0.20, 0.66
HSL	344°, 15%, 29%
HSV	344°, 27%, 34%
XYZ	6.6894, 5.9631, 6.4286
YIQ	70.5610, 11.7820, 6.7420

Conversions

Conversions Part 2

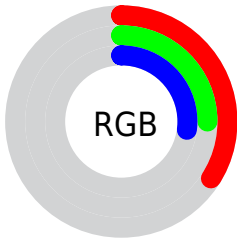
Format	Color
R_{YB}	86, 63, 69
Decimal	5652293
CIE Lab	29.32, 11.10, 0.26
CIE LCh	29, 11.098, 1.334
Yxy	5.9631, 0.3506, 0.3125
Android (android.graphics.Color)	4283842373 (0xFF563F45)
YUV	70.5610, -0.7696, 13.5400
Hunter-Lab	24.4195, 6.1639, 1.4850

Details

The YUV color **70.5610, -0.7696, 13.5400** is a dark color, and the websafe version is hex **333333**. A complement of this color would be **78.4390, 0.7696, -13.5400**, and the grayscale version is **71.0000, 0.0000, 0.0000**.

A 20% lighter version of the original color is **119.1590, -1.0644, 14.7696**, and **26.6640, -0.3274, 11.6957** is the 20% darker color. If you saturate the color by 10%, you get **64.5940, -0.7858, 18.7731**, and if you desaturate by 10%, it is **76.5280, -0.7533, 8.3069**.

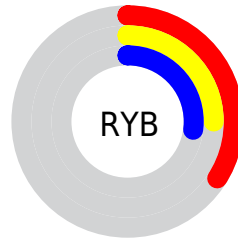
Distribution



 Red (34%)

 Green (25%)

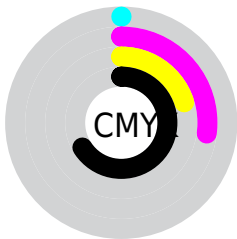
 Blue (27%)



 Red (34%)

 Yellow (25%)

 Blue (27%)

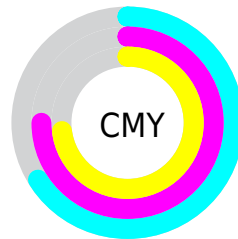


 Cyan (0%)

 Magenta (27%)

 Yellow (20%)

 Black (66%)



 Cyan (66%)

 Magenta (75%)

 Yellow (73%)

Brightness & Saturation Gradients

These gradients show how the YUV color 70.5610, -0.7696, 13.5400 changes by changing the brightness by 10 percent. The first figure shows a shift by +10% for each color and the second figure -10%.

Similar to the brightness gradients but the following saturation gradients show a change of the YUV color 70.5610, -0.7696, 13.5400 by changing the saturation by 10% instead.

70.5610, -0.7696,
13.5400

70.5610, -0.7696,
13.5400

255.0000, 0.0000,
0.0000

47.9630, -0.4748,
12.3104

119.1590, -1.0644,
14.7696

26.6640, -0.3274,
11.6957

144.8710, -0.9224,
15.8991

5.6810, -2.8007,
11.6808

171.1700, -1.0698,
16.5139

0.0000, 0.0000,
0.0000

199.0560, -1.5066,
16.6139

226.4690, -1.2172,
17.1287

249.4890, 1.7309,

4.8331

■ 70.5610, -0.7696,
13.5400

■ 70.5610, -0.7696,
13.5400

■ 64.5940, -0.7858,
18.7731

■ 76.5280, -0.7533,
8.3069

■ 59.1000, -1.5283,
23.5913

■ 82.0220, -0.0108,
3.4887

■ 53.1330, -1.5446,
28.8244

■ 87.9890, 0.0054,
-1.7444

■ 47.7530, -1.8502,
33.5426

■ 93.3690, 0.3111,
-6.4626

■ 41.6720, -2.3033,
38.8757

■ 99.4500, 0.7642,
-11.7956

■ 35.7050, -2.3196,
44.1087

■ 105.4170, 0.7804,
-17.0287

■ 30.3250, -2.6252,
48.8270

■ 110.7970, 1.0861,
-21.7470

■ 28.2220, -3.0674,
50.6713

■ 116.8780, 1.5391,
-27.0800

■ 122.2580, 1.8448,
-31.7983

Harmonies

Analogous

The Analogous color harmony consists of three colors that are next to each other on the color wheel.



70.5650, 3.1725, 9.1515



70.5610, -0.7696, 13.5400



70.5350, -4.7008, 14.4398

Triad

The Triadic color harmony groups three colors that are evenly spaced from another and form a triangle on the color wheel.



70.5610, -0.7696, 13.5400



67.5670, -6.6885, -1.3743



66.7900, 8.4845, -14.7248

Complementary

The Complementary color scheme is a pair of colors which are on the opposite of each other on the color wheel.



70.5610, -0.7696, 13.5400



78.4390, 0.7696, -13.5400

Split Complementary

Split-complementary colors differ from the complementary color scheme. The scheme consists of three colors, the original color and two neighbors of the complement color.



65.7850, 6.0220, -18.2284



70.5610, -0.7696, 13.5400



66.5490, -2.7357, -9.2515

Square

The Square scheme is like the rectangle color scheme, but the four colors are evenly spaced on the color wheel.



70.5610, -0.7696, 13.5400



68.8560, -8.3100, 5.3883



65.6560, 1.6486, -15.4843



68.8340, 8.4628, -7.7474

Rectangle

The Rectangle color scheme consists of four colors that form a rectangle on the color wheel.



70.5610, -0.7696, 13.5400



69.6550, -6.7319, 12.5806



65.6560, 1.6486, -15.4843



66.2520, 7.7638, -16.8840

Sweetspot

The Sweet Spot groups the original color and five complimentary colors.



70.5610, -0.7696, 13.5400



106.0330, -0.0163, 5.2331



70.7050, 7.5404, 8.1517



52.0220, -0.0108, 3.4887



184.0000, 0.0000, 0.0000



56.0000, 0.0000, 0.0000

Same Dimension

The Same Dimension uses a secret algorithm to generate beautiful new colors.



70.5610, -0.7696, 13.5400



87.9040, -0.9387, 21.1322



72.8120, -4.8373, 11.5659



40.3100, -0.1528, 2.3591



35.1850, -3.5422, 62.9818



77.2190, -7.9960, 138.3739

Inverse Universe

The Inverse Universe completely reimagines the original color for something new.



70.5610, -0.7696, 13.5400



87.9040, -0.9387, 21.1322



76.1880, 4.8373, -11.5659



40.3100, -0.1528, 2.3591



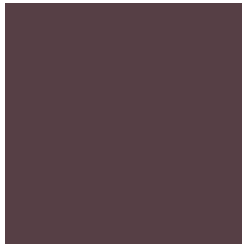
35.1850, -3.5422, 62.9818



77.2190, -7.9960, 138.3739

Previews

White Background



This preview shows how the YUV color 70.5610, -0.7696, 13.5400 looks on a white background.

Color Contrast Check

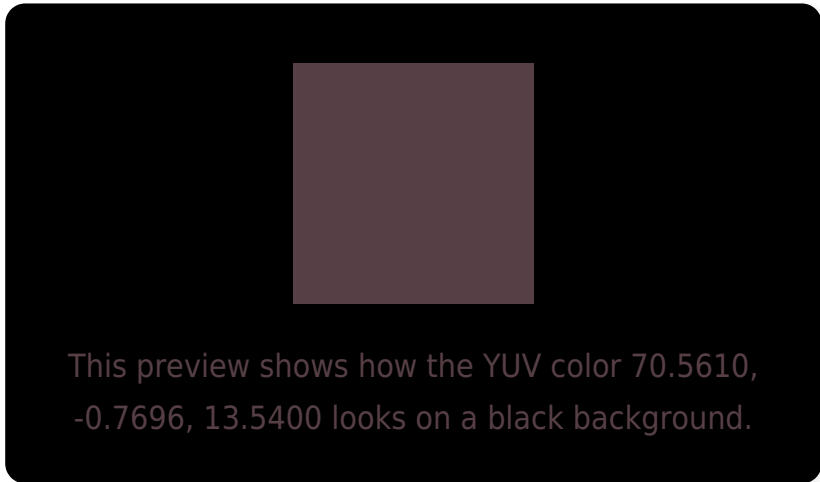
Large Text (above 18pt) WCAG AA ✓ Pass

Any Text WCAG AA ✓ Pass

Large Text (above 18pt) WCAG AAA ✓ Pass

Any Text WCAG AAA ✓ Pass

Black Background



Color Contrast Check

Large Text (above 18pt) WCAG AA × Fail

Any Text WCAG AA × Fail

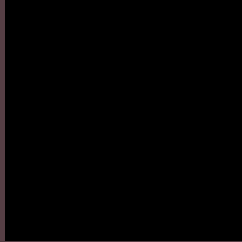
Large Text (above 18pt) WCAG AAA × Fail

Any Text WCAG AAA × Fail

If you want to check with other color combinations, try the [Color Contrast Checker](#).

YUV 70.5610, -0.7696, 13.5400

Background



This preview shows how black text looks on a background with the YUV color 70.5610, -0.7696, 13.5400.



This preview shows how white text looks on a background with the YUV color 70.5610, -0.7696,

Color Blindness Simulation

Color vision deficiency is a very complex topic, and I could not describe the different causes any better than Wikipedia does, so if you want to learn more, you should check out their [article about color blindness](#).

Dichromacy



Original Color

70.5610, -0.7696, 13.5400

Protanopia

69.6410, 1.1630, 0.3148

Deuteranopia

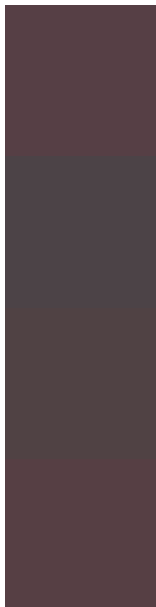
69.8050, -0.8899, 5.4330



Tritanopia

70.4470, -1.2064, 13.6400

Trichromacy



Original Color

70.5610, -0.7696, 13.5400

Protanomaly

70.1470, 0.4205, 5.1331

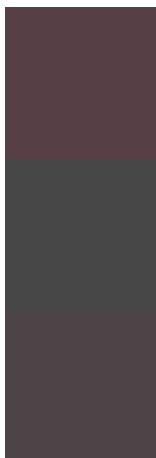
Deuteranomaly

70.4140, -1.1901, 8.4069

Tritanomaly

70.4470, -1.2064, 13.6400

Monochromacy



Original Color

70.5610, -0.7696, 13.5400

Achromatopsia

71.0000, 0.0000, 0.0000

Achromatomaly

70.6200, -0.3057, 4.7183

CSS Examples

Text

The CSS property to change the color of the text to YUV 70.5610, -0.7696, 13.5400 is called "color". The color property can be set on classes, ids or directly on the HTML element.

This example shows how text in the color `rgb(86, 63, 69)` looks like.

```
.text, #text, p{  
    color:rgb(86, 63, 69)  
}
```

If you want to add a text shadow in that color use the text-shadow property, you can generate a text shadow directly with our [CSS Text Shadow Generator](#).

Here you see how black text with a 4 pixel rgb(86, 63, 69) colored shadow looks like.

```
.shadow{ text-shadow: 4px 4px 2px rgb(86, 63, 69) }
```

Border

The CSS property to change the border of an element to YUV 70.5610, -0.7696, 13.5400 is called "border". The border property can be set on classes, ids or directly on the HTML element.

This example shows the color as border, it can be applied via the CSS property "border" or "border-color".

```
.border, #border, table{ border:4px solid rgb(86, 63, 69) }
```


If only the border color should be changed use the property border-color.

```
.border{ border-color:rgb(86, 63, 69) }
```

If you want to add a box shadow in that color use:

Here you see how a box with a 4 pixel rgb(86, 63, 69) colored shadow looks like.

```
.boxshadow{ -moz-box-shadow:4px 4px 4px  
4px rgb(86, 63, 69); -webkit-box-  
shadow:4px 4px 4px 4px rgb(86, 63, 69);  
box-shadow:4px 4px 4px 4px rgb(86, 63, 69)  
}
```

Background

The CSS property to change the background color of an element to YUV 70.5610, -0.7696, 13.5400 is called "background". The background property can be set on classes, ids or directly on the HTML element.

```
.background, #background, body{  
background: rgb(86, 63, 69) }
```

If only the background color should be changed can be used:

```
.background{ background-color: rgb(86, 63,  
69) }
```

This example shows the color as background, it is applied via the CSS property "background".

To optimize and compress your CSS code, you can use our [online CSS compressor and optimizer](#) based on csstidy. If you want to create a linear or radial gradient as background or border, check our [CSS Gradient Generator](#).

Hey! You found this booklet interesting? Support Converting Colors with the new Membership Option!

The pro membership hides all ads, plus gives you double the colors in the color bucket, and more awesome pro features!

[Learn more, Memberships starting at \\$2.50/m!](#)

**Follow me
on Twitter!**

@ConvertingColor