

Converting Colors

YUV(71.2740, -5.5581, 9.4067)

Have a look what the booklet for
YUV(71.2740, -5.5581, 9.4067)
contains.

YUV(71.2740, -5.5581, 9.4067)	3
<i>Conversions</i>	4
<i>Details</i>	6
<i>Harmonies</i>	12
<i>Previews</i>	24
<i>Color Blindness Simulation</i>	28
<i>CSS Examples</i>	31

Color

**YUV(71.2740, -5.5581,
9.4067)**

Conversions

Conversions Part 1

Format	Color
Hex	52443C
RGB	82, 68, 60
RGB Percent	32%, 27%, 24%
CMY	0.6784, 0.7333, 0.7647
CMYK	0.00, 0.17, 0.27, 0.68
HSL	22°, 15%, 28%
HSV	22°, 27%, 32%
XYZ	6.3624, 6.2543, 5.1468
YIQ	71.2740, 10.9120, 0.4800

Conversions

Conversions Part 2

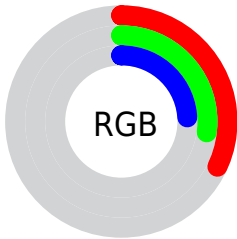
Format	Color
RYB	82, 73, 60
Decimal	5391420
CIELab	30.05, 4.55, 7.07
CIELCh	30, 8.409, 57.278
Yxy	6.2543, 0.3582, 0.3521
Android (android.graphics.Color)	4283581500 (0xFF52443C)
YUV	71.2740, -5.5581, 9.4067
Hunter-Lab	25.0087, 1.6467, 5.3040

Details

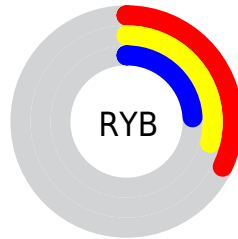
The YUV color **71.2740, -5.5581, 9.4067** is a dark color, and the websafe version is hex **333333**. A complement of this color would be **70.7260, 5.5581, -9.4067**, and the grayscale version is **71.0000, 0.0000, 0.0000**.

A 20% lighter version of the original color is **119.7580, -6.2897, 10.7362**, and **27.7900, -4.8265, 8.0772** is the 20% darker color. If you saturate the color by 10%, you get **67.4270, -7.6055, 12.7805**, and if you desaturate by 10%, it is **75.1210, -3.5107, 6.0329**.

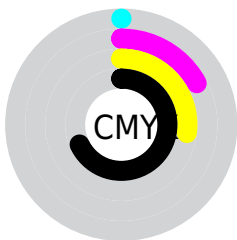
Distribution



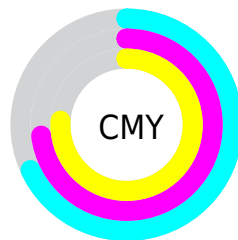
- Red (32%)
- Green (27%)
- Blue (24%)



- Red (32%)
- Yellow (29%)
- Blue (24%)



- Cyan (0%)
- Magenta (17%)
- Yellow (27%)
- Black (68%)



- Cyan (68%)
- Magenta (73%)
- Yellow (76%)

Brightness & Saturation Gradients

These gradients show how the YUV color 71.2740, -5.5581, 9.4067 changes by changing the brightness by 10 percent. The first figure shows a shift by +10% for each color and the second figure -10%.

Similar to the brightness gradients but the following saturation gradients show a change of the YUV color 71.2740, -5.5581, 9.4067 by changing the saturation by 10% instead.

■ 71.2740, -5.5581,
9.4067

■ 71.2740, -5.5581,
9.4067

■ 255.0000, 0.0000,
0.0000

■ 48.9750, -5.4107,
8.7919

■ 119.7580, -6.2897,
10.7362

■ 27.7900, -4.8265,
8.0772

■ 145.6440, -6.7265,
10.8362

■ 3.5880, -1.7689,
7.3773

■ 172.0570, -6.4371,
11.3510

■ 0.0000, 0.0000,
0.0000

■ 199.3560, -6.5845,
11.9658

■ 227.2420, -7.0213,
12.0658

■ 251.7570, -4.8102,

2.8441

■ 71.2740, -5.5581,
9.4067

■ 71.2740, -5.5581,
9.4067

■ 67.4270, -7.6055,
12.7805

■ 75.1210, -3.5107,
6.0329

■ 63.5800, -9.6529,
16.1543

■ 78.9680, -1.4632,
2.6591

■ 59.0320, -11.8478,
20.1429

■ 83.5160, 0.7316,
-1.3295

■ 55.1850, -13.8952,
23.5168

■ 87.3630, 2.7790,
-4.7034

■ 51.3380, -15.9426,
26.8906

■ 91.2100, 4.8265,
-8.0772

■ 47.4910, -17.9901,
30.2644

■ 95.0570, 6.8739,
-11.4510

■ 43.0570, -19.7481,
34.1530

■ 99.4910, 8.6319,
-15.3396

■ 42.1280, -20.7691,
34.9677

■ 103.4520, 11.1162,
-18.8134

■ 107.2990, 13.1636,
-22.1872

Harmonies

Analogous

The Analogous color harmony consists of three colors that are next to each other on the color wheel.



72.1540, -3.5269, 11.2659



71.2740, -5.5581, 9.4067



70.7250, -6.2734, 5.5032

Triad

The Triadic color harmony groups three colors that are evenly spaced from another and form a triangle on the color wheel.



71.2740, -5.5581, 9.4067



68.7490, 0.6167, -11.1809



71.0800, 5.3836, -0.0702

Complementary

The Complementary color scheme is a pair of colors which are on the opposite of each other on the color wheel.



71.2740, -5.5581, 9.4067



70.7260, 5.5581, -9.4067

Split Complementary

Split-complementary colors differ from the complementary color scheme. The scheme consists of three colors, the original color and two neighbors of the complement color.



70.0900, 6.8576, -6.2179



71.2740, -5.5581, 9.4067



68.2480, 3.8217, -12.4955

Square

The Square scheme is like the rectangle color scheme, but the four colors are evenly spaced on the color wheel.



71.2740, -5.5581, 9.4067



69.2720, -2.5991, -6.3775



68.8290, 6.0003, -11.2510



71.8420, 3.0359, 6.2776

Rectangle

The Rectangle color scheme consists of four colors that form a rectangle on the color wheel.



71.2740, -5.5581, 9.4067



70.4040, -6.1152, 1.3997



68.8290, 6.0003, -11.2510



70.8840, 5.9732, -2.5293

Sweetspot

The Sweet Spot groups the original color and five complimentary colors.



71.2740, -5.5581, 9.4067



103.1530, -2.0474, 3.3738



68.1740, 2.8722, 12.1254



50.9680, -1.4632, 2.6591



181.0000, 0.0000, 0.0000



54.0000, 0.0000, 0.0000

Same Dimension

The Same Dimension uses a secret algorithm to generate beautiful new colors.



71.2740, -5.5581, 9.4067



90.2100, -8.4845, 14.7248



77.7310, -8.7414, 3.7439



38.7830, -0.8790, 1.9443



53.7010, -26.4746, 44.9892



118.6760, -58.5073, 99.3851

Inverse Universe

The Inverse Universe completely reimagines the original color for something new.



70.7260, 5.5581, -9.4067



89.7900, 8.4845, -14.7248



64.2690, 8.7414, -3.7439



38.6300, 1.1684, -1.4295



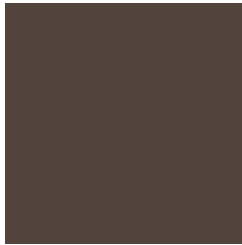
51.2990, 26.4746, -44.9892



113.3240, 58.5073, -99.3851

Previews

White Background



This preview shows how the YUV color 71.2740, -5.5581, 9.4067 looks on a white background.

Color Contrast Check

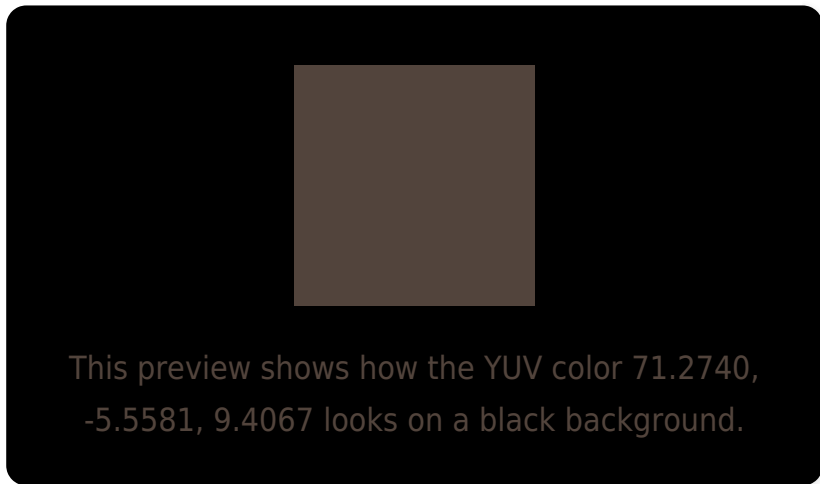
Large Text (above 18pt) WCAG AA ✓ Pass

Any Text WCAG AA ✓ Pass

Large Text (above 18pt) WCAG AAA ✓ Pass

Any Text WCAG AAA ✓ Pass

Black Background



Color Contrast Check

Large Text (above 18pt) WCAG AA × Fail

Any Text WCAG AA × Fail

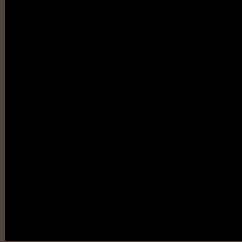
Large Text (above 18pt) WCAG AAA × Fail

Any Text WCAG AAA × Fail

If you want to check with other color combinations, try the [Color Contrast Checker](#).

YUV 71.2740, -5.5581, 9.4067

Background



This preview shows how black text looks on a background with the YUV color 71.2740, -5.5581, 9.4067.

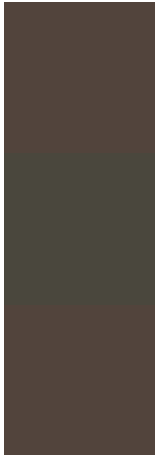


This preview shows how white text looks on a background with the YUV color 71.2740, -5.5581,

Color Blindness Simulation

Color vision deficiency is a very complex topic, and I could not describe the different causes any better than Wikipedia does, so if you want to learn more, you should check out their [article about color blindness](#).

Dichromacy



Original Color

71.2740, -5.5581, 9.4067

Protanopia

70.7570, -4.8102, 2.8441

Deuteranopia

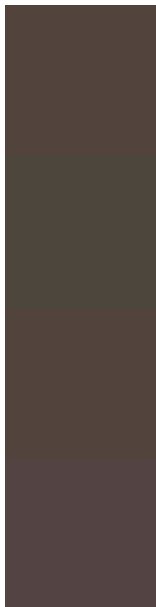
71.2740, -5.5581, 9.4067



Tritanopia

71.6530, -0.3219, 9.9513

Trichromacy



Original Color

71.2740, -5.5581, 9.4067

Protanomaly

71.0670, -4.9630, 5.2032

Deuteranomaly

71.2740, -5.5581, 9.4067

Tritanomaly

71.7840, -2.3585, 9.8364

Monochromacy



Original Color

71.2740, -5.5581, 9.4067

Achromatopsia

71.0000, 0.0000, 0.0000

Achromatomaly

71.1530, -2.0474, 3.3738

CSS Examples

Text

The CSS property to change the color of the text to YUV 71.2740, -5.5581, 9.4067 is called "color". The color property can be set on classes, ids or directly on the HTML element.

This example shows how text in the color `rgb(82, 68, 60)` looks like.

```
.text, #text, p{  
    color:rgb(82, 68, 60)  
}
```

If you want to add a text shadow in that color use the text-shadow property, you can generate a text shadow directly with our [CSS Text Shadow Generator](#).

Here you see how black text with a 4 pixel rgb(82, 68, 60) colored shadow looks like.

```
.shadow{ text-shadow: 4px 4px 2px rgb(82, 68, 60) }
```

Border

The CSS property to change the border of an element to YUV 71.2740, -5.5581, 9.4067 is called "border". The border property can be set on classes, ids or directly on the HTML element.

This example shows the color as border, it can be applied via the CSS property "border" or "border-color".

```
.border, #border, table{ border:4px solid rgb(82, 68, 60) }
```


If only the border color should be changed use the property `border-color`.

```
.border{ border-color:rgb(82, 68, 60) }
```

If you want to add a box shadow in that color use:

Here you see how a box with a 4 pixel `rgb(82, 68, 60)` colored shadow looks like.

```
.boxshadow{ -moz-box-shadow:4px 4px 4px  
4px rgb(82, 68, 60); -webkit-box-  
shadow:4px 4px 4px 4px rgb(82, 68, 60);  
box-shadow:4px 4px 4px 4px rgb(82, 68, 60)  
}
```

Background

The CSS property to change the background color of an element to YUV 71.2740, -5.5581, 9.4067 is called "background". The background property can be set on classes, ids or directly on the HTML element.

```
.background, #background, body{  
background: rgb(82, 68, 60) }
```

If only the background color should be changed can be used:

```
.background{ background-color: rgb(82, 68,  
60) }
```

This example shows the color as background, it is applied via the CSS property "background".

To optimize and compress your CSS code, you can use our [online CSS compressor and optimizer](#) based on csstidy. If you want to create a linear or radial gradient as background or border, check our [CSS Gradient Generator](#).

Hey! You found this booklet interesting? Support Converting Colors with the new Membership Option!

The pro membership hides all ads, plus gives you double the colors in the color bucket, and more awesome pro features!

[Learn more, Memberships starting at \\$2.50/m!](#)

**Follow me
on Twitter!**

@ConvertingColor