

Converting Colors

YUV(71.8710, -0.9224, 15.8991)

Have a look what the booklet for
YUV(71.8710, -0.9224, 15.8991)
contains.

YUV(71.8710, -0.9224, 15.8991)	3
<i>Conversions</i>	4
<i>Details</i>	6
<i>Harmonies</i>	12
<i>Previews</i>	24
<i>Color Blindness Simulation</i>	28
<i>CSS Examples</i>	31

Color

**YUV(71.8710, -0.9224,
15.8991)**

Conversions

Conversions Part 1

Format	Color
Hex	5A3F46
RGB	90, 63, 70
RGB Percent	35%, 25%, 27%
CMY	0.6471, 0.7529, 0.7255
CMYK	0.00, 0.30, 0.22, 0.65
HSL	344°, 18%, 30%
HSV	344°, 30%, 35%
XYZ	7.0994, 6.1709, 6.6113
YIQ	71.8710, 13.8450, 7.9010

Conversions

Conversions Part 2

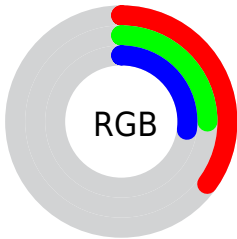
Format	Color
R_{YB}	90, 63, 70
Decimal	5914438
CIE _{Lab}	29.84, 12.99, 0.42
CIE _{LCh}	30, 12.994, 1.873
Yxy	6.1709, 0.3571, 0.3104
Android (android.graphics.Color)	4284104518 (0xFF5A3F46)
YUV	71.8710, -0.9224, 15.8991
Hunter-Lab	24.8412, 7.5419, 1.6094

Details

The YUV color **71.8710, -0.9224, 15.8991** is a dark color, and the websafe version is hex **663333**. A complement of this color would be **81.1290, 0.9224, -15.8991**, and the grayscale version is **72.0000, 0.0000, 0.0000**.

A 20% lighter version of the original color is **120.7680, -1.3646, 17.7435**, and **27.6750, -0.3328, 13.4400** is the 20% darker color. If you saturate the color by 10%, you get **65.7900, -1.3755, 21.2322**, and if you desaturate by 10%, it is **77.9520, -0.4693, 10.5661**.

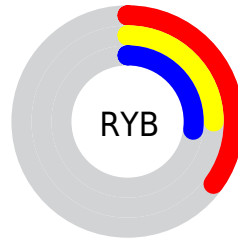
Distribution



Red (35%)

Green (25%)

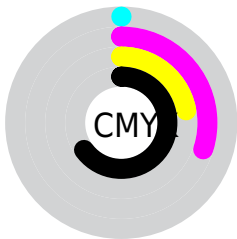
Blue (27%)



Red (35%)

Yellow (25%)

Blue (27%)

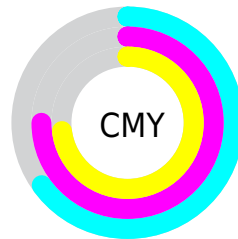


Cyan (0%)

Magenta (30%)

Yellow (22%)

Black (65%)



Cyan (65%)

Magenta (75%)

Yellow (73%)

Brightness & Saturation Gradients

These gradients show how the YUV color 71.8710, -0.9224, 15.8991 changes by changing the brightness by 10 percent. The first figure shows a shift by +10% for each color and the second figure -10%.

Similar to the brightness gradients but the following saturation gradients show a change of the YUV color 71.8710, -0.9224, 15.8991 by changing the saturation by 10% instead.

■ 71.8710, -0.9224,
15.8991

■ 71.8710, -0.9224,
15.8991

■ 255.0000, 0.0000,
0.0000

■ 49.2730, -0.6276,
14.6696

■ 120.7680, -1.3646,
17.7435

■ 27.6750, -0.3328,
13.4400

■ 146.1810, -1.0752,
18.2583

■ 7.5890, -3.2484,
15.2694

■ 173.3660, -1.6594,
18.9730

■ 0.0000, 0.0000,
0.0000

■ 200.7790, -1.3700,
19.4878

■ 228.7790, -1.3700,
19.4878

■ 249.6030, 2.1677,

4.7332

■ 71.8710, -0.9224,
15.8991

■ 71.8710, -0.9224,
15.8991

■ 65.7900, -1.3755,
21.2322

■ 77.9520, -0.4693,
10.5661

■ 59.8230, -1.3917,
26.4652

■ 83.9190, -0.4531,
5.3330

■ 53.7420, -1.8448,
31.7983

■ 90.0000, 0.0000,
0.0000

■ 47.6610, -2.2979,
37.1313

■ 96.0810, 0.4531,
-5.3330

■ 41.6940, -2.3141,
42.3644

■ 102.0480, 0.4693,
-10.5661

■ 35.6130, -2.7672,
47.6974

■ 108.1290, 0.9224,
-15.8991

■ 29.5320, -3.2203,
53.0304

■ 114.2100, 1.3755,
-21.2322

■ 120.1770, 1.3917,
-26.4652

■ 126.2580, 1.8448,
-31.7983

Harmonies

Analogous

The Analogous color harmony consists of three colors that are next to each other on the color wheel.



71.8040, 4.0406, 10.6959



71.8710, -0.9224, 15.8991



71.3180, -5.5798, 16.3841

Triad

The Triadic color harmony groups three colors that are evenly spaced from another and form a triangle on the color wheel.



71.8710, -0.9224, 15.8991



68.6270, -7.7041, -2.3039



67.2240, 10.2426, -18.6134

Complementary

The Complementary color scheme is a pair of colors which are on the opposite of each other on the color wheel.



71.8710, -0.9224, 15.8991



81.1290, 0.9224, -15.8991

Split Complementary

Split-complementary colors differ from the complementary color scheme. The scheme consists of three colors, the original color and two neighbors of the complement color.



66.1050, 7.3432, -22.0171



71.8710, -0.9224, 15.8991



67.3100, -3.6038, -10.7959

Square

The Square scheme is like the rectangle color scheme, but the four colors are evenly spaced on the color wheel.



71.8710, -0.9224, 15.8991



69.8130, -9.7678, 6.3030



66.1610, 2.3856, -18.5582



69.5780, 10.0680, -9.2769

Rectangle

The Rectangle color scheme consists of four colors that form a rectangle on the color wheel.



71.8710, -0.9224, 15.8991



70.7370, -7.7583, 15.1397



66.1610, 2.3856, -18.5582



66.9850, 9.3744, -20.1578

Sweetspot

The Sweet Spot groups the original color and five complimentary colors.



71.8710, -0.9224, 15.8991



110.2180, -0.6005, 5.9478



72.0580, 8.8454, 9.5961



54.3210, -0.1583, 4.1035



186.0000, 0.0000, 0.0000



59.0000, 0.0000, 0.0000

Same Dimension

The Same Dimension uses a secret algorithm to generate beautiful new colors.



71.8710, -0.9224, 15.8991



88.8120, -1.3863, 24.7209



74.5950, -5.7163, 13.5102



42.7230, 0.1366, 2.8739



36.0820, -3.9844, 64.8261



77.8170, -8.2908, 139.6035

Inverse Universe

The Inverse Universe completely reimagines the original color for something new.



71.8710, -0.9224, 15.8991



88.8120, -1.3863, 24.7209



78.4050, 5.7163, -13.5102



42.7230, 0.1366, 2.8739



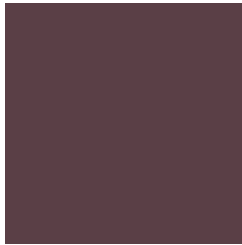
36.0820, -3.9844, 64.8261



77.8170, -8.2908, 139.6035

Previews

White Background



This preview shows how the YUV color 71.8710, -0.9224, 15.8991 looks on a white background.

Color Contrast Check

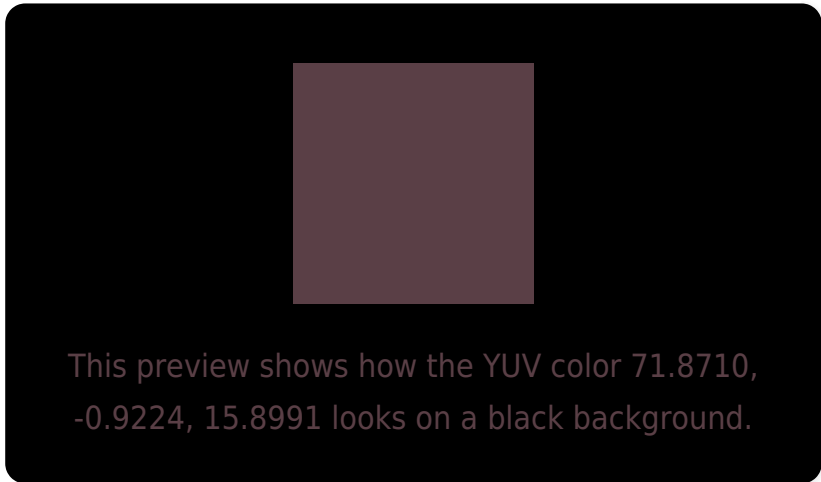
Large Text (above 18pt) WCAG AA ✓ Pass

Any Text WCAG AA ✓ Pass

Large Text (above 18pt) WCAG AAA ✓ Pass

Any Text WCAG AAA ✓ Pass

Black Background



Color Contrast Check

Large Text (above 18pt) WCAG AA × Fail

Any Text WCAG AA × Fail

Large Text (above 18pt) WCAG AAA × Fail

Any Text WCAG AAA × Fail

If you want to check with other color combinations, try the [Color Contrast Checker](#).

YUV 71.8710, -0.9224, 15.8991

Background



This preview shows how black text looks on a background with the YUV color 71.8710, -0.9224, 15.8991.

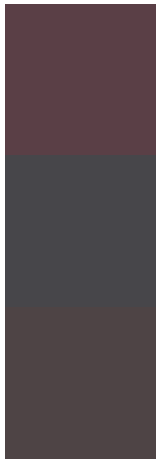


This preview shows how white text looks on a background with the YUV color 71.8710, -0.9224,

Color Blindness Simulation

Color vision deficiency is a very complex topic, and I could not describe the different causes any better than Wikipedia does, so if you want to learn more, you should check out their [article about color blindness](#).

Dichromacy



Original Color

71.8710, -0.9224, 15.8991

Protanopia

70.7550, 1.5998, 0.2149

Deuteranopia

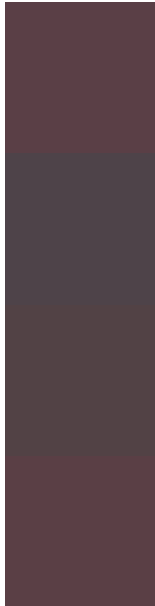
71.1040, -1.0373, 6.0478



Tritanopia

71.6430, -1.7960, 16.0991

Trichromacy



Original Color

71.8710, -0.9224, 15.8991

Protanomaly

70.9730, 0.9993, 6.1627

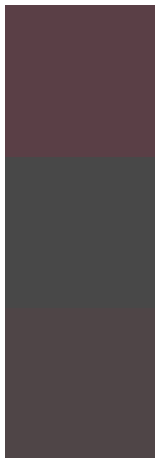
Deuteranomaly

71.1260, -1.0481, 9.5365

Tritanomaly

71.7570, -1.3592, 15.9991

Monochromacy



Original Color

71.8710, -0.9224, 15.8991

Achromatopsia

72.0000, 0.0000, 0.0000

Achromatomaly

72.2180, -0.6005, 5.9478

CSS Examples

Text

The CSS property to change the color of the text to YUV 71.8710, -0.9224, 15.8991 is called "color". The color property can be set on classes, ids or directly on the HTML element.

This example shows how text in the color `rgb(90, 63, 70)` looks like.

```
.text, #text, p{  
    color:rgb(90, 63, 70)  
}
```

If you want to add a text shadow in that color use the text-shadow property, you can generate a text shadow directly with our [CSS Text Shadow Generator](#).

Here you see how black text with a 4 pixel rgb(90, 63, 70) colored shadow looks like.

```
.shadow{ text-shadow: 4px 4px 2px rgb(90, 63, 70) }
```

Border

The CSS property to change the border of an element to YUV 71.8710, -0.9224, 15.8991 is called "border". The border property can be set on classes, ids or directly on the HTML element.

This example shows the color as border, it can be applied via the CSS property "border" or "border-color".

```
.border, #border, table{ border:4px solid rgb(90, 63, 70) }
```


If only the border color should be changed use the property `border-color`.

```
.border{ border-color:rgb(90, 63, 70) }
```

If you want to add a box shadow in that color use:

Here you see how a box with a 4 pixel `rgb(90, 63, 70)` colored shadow looks like.

```
.boxshadow{ -moz-box-shadow:4px 4px 4px  
4px rgb(90, 63, 70); -webkit-box-  
shadow:4px 4px 4px 4px rgb(90, 63, 70);  
box-shadow:4px 4px 4px 4px rgb(90, 63, 70)  
}
```

Background

The CSS property to change the background color of an element to YUV 71.8710, -0.9224, 15.8991 is called "background". The background property can be set on classes, ids or directly on the HTML element.

```
.background, #background, body{  
background: rgb(90, 63, 70) }
```

If only the background color should be changed can be used:

```
.background{ background-color: rgb(90, 63,  
70) }
```

This example shows the color as background, it is applied via the CSS property "background".

To optimize and compress your CSS code, you can use our [online CSS compressor and optimizer](#) based on csstidy. If you want to create a linear or radial gradient as background or border, check our [CSS Gradient Generator](#).

Hey! You found this booklet interesting? Support Converting Colors with the new Membership Option!

The pro membership hides all ads, plus gives you double the colors in the color bucket, and more awesome pro features!

[Learn more, Memberships starting at \\$2.50/m!](#)

**Follow me
on Twitter!**

@ConvertingColor