

Converting Colors

YUV(75.7150, -7.7475, 11.6509)

Have a look what the booklet for
YUV(75.7150, -7.7475, 11.6509)
contains.

YUV(75.7150, -7.7475, 11.6509)	3
<i>Conversions</i>	4
<i>Details</i>	6
<i>Harmonies</i>	12
<i>Previews</i>	24
<i>Color Blindness Simulation</i>	28
<i>CSS Examples</i>	31

Color

**YUV(75.7150, -7.7475,
11.6509)**

Conversions

Conversions Part 1

Format	Color
Hex	59483C
RGB	89, 72, 60
RGB Percent	35%, 28%, 24%
CMY	0.6510, 0.7176, 0.7647
CMYK	0.00, 0.19, 0.33, 0.65
HSL	25°, 19%, 29%
HSV	25°, 33%, 35%
XYZ	7.2528, 7.0848, 5.2602
YIQ	75.7150, 13.9840, -0.1280

Conversions

Conversions Part 2

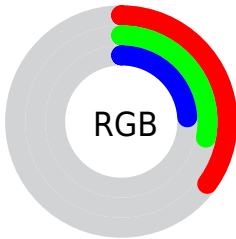
Format	Color
R_{YB}	89, 80, 60
Decimal	5851196
CIE Lab	32.00, 5.18, 9.92
CIE LCh	32, 11.189, 62.403
Yxy	7.0848, 0.3701, 0.3615
Android (android.graphics.Color)	4284041276 (0xFF59483C)
YUV	75.7150, -7.7475, 11.6509
Hunter-Lab	26.6173, 2.0581, 6.9150

Details

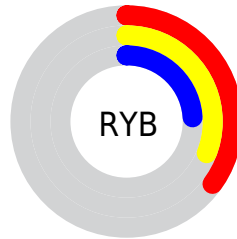
The YUV color **75.7150, -7.7475, 11.6509** is a dark color, and the websafe version is hex **333333**. A complement of this color would be **73.2850, 7.7475, -11.6509**, and the grayscale version is **76.0000, 0.0000, 0.0000**.

A 20% lighter version of the original color is **124.4980, -8.6265, 13.5953**, and **31.9320, -6.8685, 9.7066** is the 20% darker color. If you saturate the color by 10%, you get **71.7540, -10.2317, 15.1247**, and if you desaturate by 10%, it is **79.6760, -5.2633, 8.1771**.

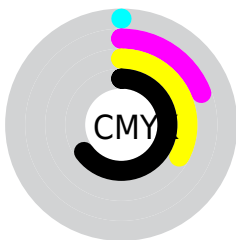
Distribution



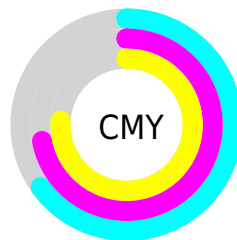
- Red (35%)
- Green (28%)
- Blue (24%)



- Red (35%)
- Yellow (31%)
- Blue (24%)



- Cyan (0%)
- Magenta (19%)
- Yellow (33%)
- Black (65%)



- Cyan (65%)
- Magenta (72%)
- Yellow (76%)

Brightness & Saturation Gradients

These gradients show how the YUV color 75.7150, -7.7475, 11.6509 changes by changing the brightness by 10 percent. The first figure shows a shift by +10% for each color and the second figure -10%.

Similar to the brightness gradients but the following saturation gradients show a change of the YUV color 75.7150, -7.7475, 11.6509 by changing the saturation by 10% instead.

■ 75.7150, -7.7475,
11.6509

■ 75.7150, -7.7475,
11.6509

255.0000, 0.0000,
0.0000

■ 53.1170, -7.4527,
10.4214

■ 124.4980, -8.6265,
13.5953

■ 31.9320, -6.8685,
9.7066

■ 150.4980, -8.6265,
13.5953

■ 8.0400, -3.9637,
11.3659

■ 177.3840, -9.0633,
13.6952

■ 0.0000, 0.0000,
0.0000

■ 204.6830, -9.2107,
14.3100

■ 232.8680, -9.7949,
15.0248

■ 253.5180, -5.6784,

1.2997

■ 75.7150, -7.7475,
11.6509

■ 75.7150, -7.7475,
11.6509

■ 71.7540, -10.2317,
15.1247

■ 79.6760, -5.2633,
8.1771

■ 67.7930, -12.7159,
18.5985

■ 83.6370, -2.7790,
4.7034

■ 63.2450, -14.9108,
22.5871

■ 88.1850, -0.5842,
0.7148

■ 59.2840, -17.3950,
26.0609

■ 92.1460, 1.9000,
-2.7590

■ 55.4370, -19.4424,
29.4348

■ 96.1070, 4.3842,
-6.2328

■ 51.4760, -21.9267,
32.9085

■ 99.9540, 6.4317,
-9.6067

■ 48.3300, -23.8267,
35.6676

■ 104.5020, 8.6265,
-13.5953

■ 108.4630, 11.1107,
-17.0691

■ 112.4240, 13.5950,
-20.5428

Harmonies

Analogous

The Analogous color harmony consists of three colors that are next to each other on the color wheel.



76.4210, -5.1376, 14.5398



75.7150, -7.7475, 11.6509



74.8560, -8.3100, 5.3883

Triad

The Triadic color harmony groups three colors that are evenly spaced from another and form a triangle on the color wheel.



75.7150, -7.7475, 11.6509



71.7700, 2.0854, -15.5843



76.4330, 6.6885, 1.3743

Complementary

The Complementary color scheme is a pair of colors which are on the opposite of each other on the color wheel.



75.7150, -7.7475, 11.6509



73.2850, 7.7475, -11.6509

Split Complementary

Split-complementary colors differ from the complementary color scheme. The scheme consists of three colors, the original color and two neighbors of the complement color.



74.9480, 8.8996, -7.8474



75.7150, -7.7475, 11.6509



71.7850, 6.0220, -18.2284

Square

The Square scheme is like the rectangle color scheme, but the four colors are evenly spaced on the color wheel.



75.7150, -7.7475, 11.6509



73.1360, -3.0250, -9.7663



72.9040, 8.9213, -14.8248



76.6790, 3.6093, 9.0515

Rectangle

The Rectangle color scheme consists of four colors that form a rectangle on the color wheel.



75.7150, -7.7475, 11.6509



74.3500, -7.5675, 0.5701



72.9040, 8.9213, -14.8248



75.9380, 7.4256, -1.6996

Sweetspot

The Sweet Spot groups the original color and five complimentary colors.



75.7150, -7.7475, 11.6509



109.5230, -3.2158, 4.8033



70.6090, 3.1508, 16.1289



55.8540, -1.9000, 2.7590



186.0000, 0.0000, 0.0000



59.0000, 0.0000, 0.0000

Same Dimension

The Same Dimension uses a secret algorithm to generate beautiful new colors.



75.7150, -7.7475, 11.6509



94.6080, -12.1317, 17.8838



83.9330, -11.7990, 4.4438



41.3700, -1.1684, 1.4295



57.8210, -28.5058, 43.1300



127.2040, -62.7116, 94.5371

Inverse Universe

The Inverse Universe completely reimagines the original color for something new.



73.2850, 7.7475, -11.6509



90.3920, 12.1317, -17.8838



65.0670, 11.7990, -4.4438



41.2170, 0.8790, -1.9443



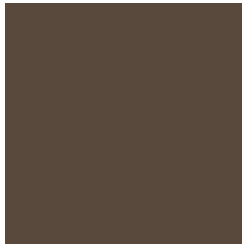
49.1790, 28.5058, -43.1300



107.7960, 62.7116, -94.5371

Previews

White Background



This preview shows how the YUV color 75.7150, -7.7475, 11.6509 looks on a white background.

Color Contrast Check

Large Text (above 18pt) WCAG AA ✓ Pass

Any Text WCAG AA ✓ Pass

Large Text (above 18pt) WCAG AAA ✓ Pass

Any Text WCAG AAA ✓ Pass

Black Background



This preview shows how the YUV color 75.7150, -7.7475, 11.6509 looks on a black background.

Color Contrast Check

Large Text (above 18pt) WCAG AA × Fail

Any Text WCAG AA × Fail

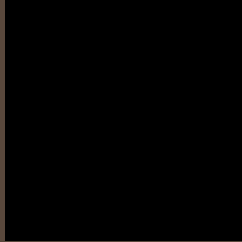
Large Text (above 18pt) WCAG AAA × Fail

Any Text WCAG AAA × Fail

If you want to check with other color combinations, try the [Color Contrast Checker](#).

YUV 75.7150, -7.7475, 11.6509

Background



This preview shows how black text looks on a background with the YUV color 75.7150, -7.7475, 11.6509.

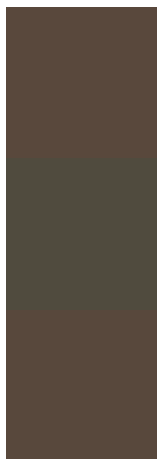


This preview shows how white text looks on a background with the YUV color 75.7150, -7.7475,

Color Blindness Simulation

Color vision deficiency is a very complex topic, and I could not describe the different causes any better than Wikipedia does, so if you want to learn more, you should check out their [article about color blindness](#).

Dichromacy



Original Color

75.7150, -7.7475, 11.6509

Protanopia

75.0130, -6.4154, 4.3736

Deuteranopia

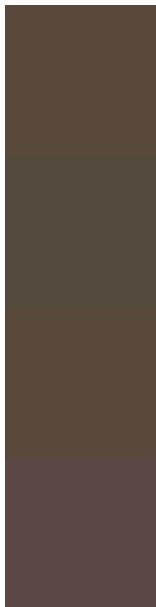
75.4160, -7.6001, 11.0362



Tritanopia

76.8490, -0.9116, 12.4104

Trichromacy



Original Color

75.7150, -7.7475, 11.6509

Protanomaly

75.2090, -7.0050, 6.8327

Deuteranomaly

75.4160, -7.6001, 11.0362

Tritanomaly

76.5670, -3.2375, 11.7807

Monochromacy



Original Color

75.7150, -7.7475, 11.6509

Achromatopsia

76.0000, 0.0000, 0.0000

Achromatomaly

76.2240, -3.0684, 4.1886

CSS Examples

Text

The CSS property to change the color of the text to YUV 75.7150, -7.7475, 11.6509 is called "color". The color property can be set on classes, ids or directly on the HTML element.

This example shows how text in the color `rgb(89, 72, 60)` looks like.

```
.text, #text, p{  
    color:rgb(89, 72, 60)  
}
```

If you want to add a text shadow in that color use the text-shadow property, you can generate a text shadow directly with our [CSS Text Shadow Generator](#).

Here you see how black text with a 4 pixel rgb(89, 72, 60) colored shadow looks like.

```
.shadow{ text-shadow: 4px 4px 2px rgb(89, 72, 60) }
```

Border

The CSS property to change the border of an element to YUV 75.7150, -7.7475, 11.6509 is called "border". The border property can be set on classes, ids or directly on the HTML element.

This example shows the color as border, it can be applied via the CSS property "border" or "border-color".

```
.border, #border, table{ border:4px solid rgb(89, 72, 60) }
```


If only the border color should be changed use the property `border-color`.

```
.border{ border-color:rgb(89, 72, 60) }
```

If you want to add a box shadow in that color use:

Here you see how a box with a 4 pixel `rgb(89, 72, 60)` colored shadow looks like.

```
.boxshadow{ -moz-box-shadow:4px 4px 4px  
4px rgb(89, 72, 60); -webkit-box-  
shadow:4px 4px 4px 4px rgb(89, 72, 60);  
box-shadow:4px 4px 4px 4px rgb(89, 72, 60)  
}
```

Background

The CSS property to change the background color of an element to YUV 75.7150, -7.7475, 11.6509 is called "background". The background property can be set on classes, ids or directly on the HTML element.

```
.background, #background, body{  
background: rgb(89, 72, 60) }
```

If only the background color should be changed can be used:

```
.background{ background-color: rgb(89, 72,  
60) }
```

This example shows the color as background, it is applied via the CSS property "background".

To optimize and compress your CSS code, you can use our [online CSS compressor and optimizer](#) based on csstidy. If you want to create a linear or radial gradient as background or border, check our [CSS Gradient Generator](#).

Hey! You found this booklet interesting? Support Converting Colors with the new Membership Option!

The pro membership hides all ads, plus gives you double the colors in the color bucket, and more awesome pro features!

[Learn more, Memberships starting at \\$2.50/m!](#)

**Follow me
on Twitter!**

@ConvertingColor