

Converting Colors

YUV(76.6710, -4.2748, 17.8285)

Have a look what the booklet for
YUV(76.6710, -4.2748, 17.8285)
contains.

YUV(76.6710, -4.2748, 17.8285)	3
<i>Conversions</i>	4
<i>Details</i>	6
<i>Harmonies</i>	12
<i>Previews</i>	24
<i>Color Blindness Simulation</i>	28
<i>CSS Examples</i>	31

Color

**YUV(76.6710, -4.2748,
17.8285)**

Conversions

Conversions Part 1

Format	Color
Hex	614444
RGB	97, 68, 68
RGB Percent	38%, 27%, 27%
CMY	0.6196, 0.7333, 0.7333
CMYK	0.00, 0.30, 0.30, 0.62
HSL	0°, 18%, 32%
HSV	0°, 30%, 38%
XYZ	8.0403, 7.0930, 6.4142
YIQ	76.6710, 17.2840, 6.1480

Conversions

Conversions Part 2

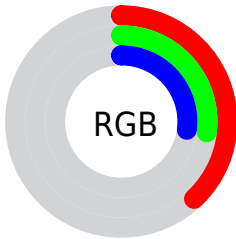
Format	Color
RYB	97, 68, 68
Decimal	6374468
CIELab	32.02, 12.52, 4.97
CIELCh	32, 13.467, 21.653
Yxy	7.0930, 0.3731, 0.3292
Android (android.graphics.Color)	4284564548 (0xFF614444)
YUV	76.6710, -4.2748, 17.8285
Hunter-Lab	26.6327, 7.2812, 4.3636

Details

The YUV color **76.6710, -4.2748, 17.8285** is a dark color, and the websafe version is hex **663333**. A complement of this color would be **88.3290, 4.2748, -17.8285**, and the grayscale version is **77.0000, 0.0000, 0.0000**.

A 20% lighter version of the original color is **125.5680, -4.7170, 19.6729**, and **32.1760, -3.5378, 14.7546** is the 20% darker color. If you saturate the color by 10%, you get **69.6610, -5.7489, 23.9763**, and if you desaturate by 10%, it is **83.6810, -2.8007, 11.6808**.

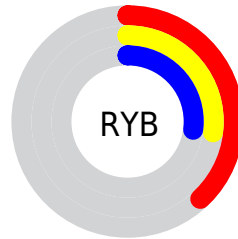
Distribution



Red (38%)

Green (27%)

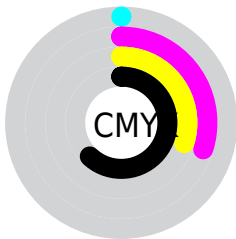
Blue (27%)



Red (38%)

Yellow (27%)

Blue (27%)

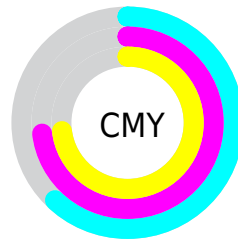


Cyan (0%)

Magenta (30%)

Yellow (30%)

Black (62%)



Cyan (62%)

Magenta (73%)

Yellow (73%)

Brightness & Saturation Gradients

These gradients show how the YUV color 76.6710, -4.2748, 17.8285 changes by changing the brightness by 10 percent. The first figure shows a shift by +10% for each color and the second figure -10%.

Similar to the brightness gradients but the following saturation gradients show a change of the YUV color 76.6710, -4.2748, 17.8285 by changing the saturation by 10% instead.

■ 76.6710, -4.2748,
17.8285

■ 76.6710, -4.2748,
17.8285

255.0000, 0.0000,
0.0000

■ 54.0730, -3.9800,
16.5990

■ 125.5680, -4.7170,
19.6729

■ 32.1760, -3.5378,
14.7546

■ 151.8670, -4.8644,
20.2876

■ 9.2690, -4.5696,
19.0581

■ 178.4650, -5.1592,
21.5172

■ 0.0000, 0.0000,
0.0000

■ 206.3510, -5.5960,
21.6172

■ 233.1550, -5.0064,
19.1581

■ 252.8970, -0.4422,

1.8443

■ 76.6710, -4.2748,
17.8285

■ 76.6710, -4.2748,
17.8285

■ 69.6610, -5.7489,
23.9763

■ 83.6810, -2.8007,
11.6808

■ 63.3520, -7.0755,
29.5093

■ 89.9900, -1.4741,
6.1478

■ 56.3420, -8.5496,
35.6571

■ 97.0000, 0.0000,
0.0000

■ 49.3320, -10.0237,
41.8048

■ 104.0100, 1.4741,
-6.1478

■ 43.0230, -11.3503,
47.3378

■ 110.3190, 2.8007,
-11.6808

■ 36.0130, -12.8244,
53.4856

■ 117.3290, 4.2748,
-17.8285

■ 29.0030, -14.2985,
59.6334

■ 124.3390, 5.7489,
-23.9763

■ 131.3490, 7.2229,
-30.1241

■ 137.6580, 8.5496,
-35.6571

Harmonies

Analogous

The Analogous color harmony consists of three colors that are next to each other on the color wheel.



77.0280, 0.9722, 14.8844



76.6710, -4.2748, 17.8285



75.9220, -8.3425, 15.8544

Triad

The Triadic color harmony groups three colors that are evenly spaced from another and form a triangle on the color wheel.



76.6710, -4.2748, 17.8285



72.8650, -5.3564, -8.6516



73.7840, 10.9525, -12.9656

Complementary

The Complementary color scheme is a pair of colors which are on the opposite of each other on the color wheel.



76.6710, -4.2748, 17.8285



88.3290, 4.2748, -17.8285

Split Complementary

Split-complementary colors differ from the complementary color scheme. The scheme consists of three colors, the original color and two neighbors of the complement color.



71.5010, 10.1060, -21.4874



76.6710, -4.2748, 17.8285



71.3030, 0.3436, -16.9287

Square

The Square scheme is like the rectangle color scheme, but the four colors are evenly spaced on the color wheel.



76.6710, -4.2748, 17.8285



74.0080, -8.8779, 0.8700



70.4640, 6.1802, -22.3319



76.0950, 9.3202, -2.7143

Rectangle

The Rectangle color scheme consists of four colors that form a rectangle on the color wheel.



76.6710, -4.2748, 17.8285



75.2590, -9.4947, 12.0509



70.4640, 6.1802, -22.3319



72.7620, 10.9633, -16.4543

Sweetspot

The Sweet Spot groups the original color and five complimentary colors.



76.6710, -4.2748, 17.8285



117.2890, -1.6215, 6.7625



79.9770, 8.3923, 14.9292



59.0930, -1.0318, 4.3034



191.0000, 0.0000, 0.0000



64.0000, 0.0000, 0.0000

Same Dimension

The Same Dimension uses a secret algorithm to generate beautiful new colors.



76.6710, -4.2748, 17.8285



93.4550, -6.6333, 27.6650



84.8890, -8.3263, 10.6213



45.1960, -0.5896, 2.4591



33.4880, -16.5096, 68.8550



71.7600, -35.3777, 147.5465

Inverse Universe

The Inverse Universe completely reimagines the original color for something new.



88.3290, 4.2748, -17.8285



111.5450, 6.6333, -27.6650



79.5240, 8.6157, -10.1065



46.8040, 0.5896, -2.4591



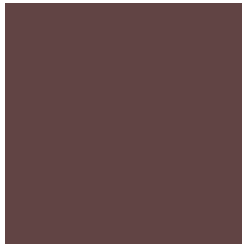
78.5120, 16.5096, -68.8550



168.2400, 35.3777, -147.5465

Previews

White Background



This preview shows how the YUV color 76.6710, -4.2748, 17.8285 looks on a white background.

Color Contrast Check

Large Text (above 18pt) WCAG AA ✓ Pass

Any Text WCAG AA ✓ Pass

Large Text (above 18pt) WCAG AAA ✓ Pass

Any Text WCAG AAA ✓ Pass

Black Background



This preview shows how the YUV color 76.6710, -4.2748, 17.8285 looks on a black background.

Color Contrast Check

Large Text (above 18pt) WCAG AA × Fail

Any Text WCAG AA × Fail

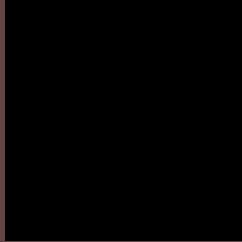
Large Text (above 18pt) WCAG AAA × Fail

Any Text WCAG AAA × Fail

If you want to check with other color combinations, try the [Color Contrast Checker](#).

YUV 76.6710, -4.2748, 17.8285

Background



This preview shows how black text looks on a background with the YUV color 76.6710, -4.2748, 17.8285.

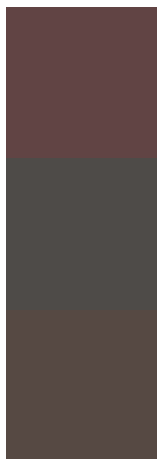


This preview shows how white text looks on a background with the YUV color 76.6710, -4.2748,

Color Blindness Simulation

Color vision deficiency is a very complex topic, and I could not describe the different causes any better than Wikipedia does, so if you want to learn more, you should check out their [article about color blindness](#).

Dichromacy



Original Color

76.6710, -4.2748, 17.8285

Protanopia

75.5550, -1.7526, 2.1443

Deuteranopia

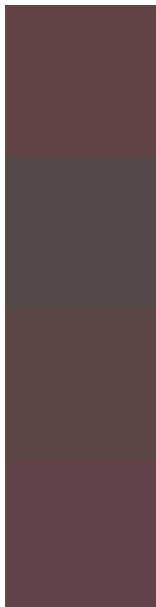
76.2030, -4.5371, 8.5920



Tritanopia

76.5400, -2.2382, 17.9434

Trichromacy



Original Color

76.6710, -4.2748, 17.8285

Protanomaly

75.7730, -2.3531, 8.0921

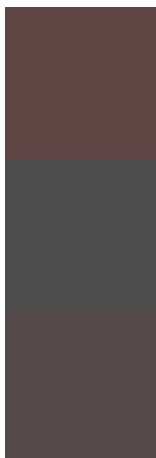
Deuteranomaly

76.2250, -4.5479, 12.0807

Tritanomaly

76.4260, -2.6750, 18.0434

Monochromacy



Original Color

76.6710, -4.2748, 17.8285

Achromatopsia

77.0000, 0.0000, 0.0000

Achromatomaly

76.9900, -1.4741, 6.1478

CSS Examples

Text

The CSS property to change the color of the text to YUV 76.6710, -4.2748, 17.8285 is called "color". The color property can be set on classes, ids or directly on the HTML element.

This example shows how text in the color `rgb(97, 68, 68)` looks like.

```
.text, #text, p{  
    color:rgb(97, 68, 68)  
}
```

If you want to add a text shadow in that color use the text-shadow property, you can generate a text shadow directly with our [CSS Text Shadow Generator](#).

Here you see how black text with a 4 pixel rgb(97, 68, 68) colored shadow looks like.

```
.shadow{ text-shadow: 4px 4px 2px rgb(97, 68, 68) }
```

Border

The CSS property to change the border of an element to YUV 76.6710, -4.2748, 17.8285 is called "border". The border property can be set on classes, ids or directly on the HTML element.

This example shows the color as border, it can be applied via the CSS property "border" or "border-color".

```
.border, #border, table{ border:4px solid rgb(97, 68, 68) }
```


If only the border color should be changed use the property border-color.

```
.border{ border-color:rgb(97, 68, 68) }
```

If you want to add a box shadow in that color use:

Here you see how a box with a 4 pixel rgb(97, 68, 68) colored shadow looks like.

```
.boxshadow{ -moz-box-shadow:4px 4px 4px  
4px rgb(97, 68, 68); -webkit-box-  
shadow:4px 4px 4px 4px rgb(97, 68, 68);  
box-shadow:4px 4px 4px 4px rgb(97, 68, 68)  
}
```

Background

The CSS property to change the background color of an element to YUV 76.6710, -4.2748, 17.8285 is called "background". The background property can be set on classes, ids or directly on the HTML element.

```
.background, #background, body{  
background: rgb(97, 68, 68) }
```

If only the background color should be changed can be used:

```
.background{ background-color: rgb(97, 68,  
68) }
```

This example shows the color as background, it is applied via the CSS property "background".

To optimize and compress your CSS code, you can use our [online CSS compressor and optimizer](#) based on csstidy. If you want to create a linear or radial gradient as background or border, check our [CSS Gradient Generator](#).

Hey! You found this booklet interesting? Support Converting Colors with the new Membership Option!

The pro membership hides all ads, plus gives you double the colors in the color bucket, and more awesome pro features!

[Learn more, Memberships starting at \\$2.50/m!](#)

**Follow me
on Twitter!**

@ConvertingColor