

Converting Colors

YUV(77.7460, -1.3538, 14.2548)

Have a look what the booklet for
YUV(77.7460, -1.3538, 14.2548)
contains.

YUV(77.7460, -1.3538, 14.2548)	3
<i>Conversions</i>	4
<i>Details</i>	6
<i>Harmonies</i>	12
<i>Previews</i>	24
<i>Color Blindness Simulation</i>	28
<i>CSS Examples</i>	31

Color

**YUV(77.7460, -1.3538,
14.2548)**

Conversions

Conversions Part 1

Format	Color
Hex	5E464B
RGB	94, 70, 75
RGB Percent	37%, 27%, 29%
CMY	0.6314, 0.7255, 0.7059
CMYK	0.00, 0.26, 0.20, 0.63
HSL	348°, 15%, 32%
HSV	348°, 26%, 37%
XYZ	8.0763, 7.2680, 7.6338
YIQ	77.7460, 12.6990, 6.6430

Conversions

Conversions Part 2

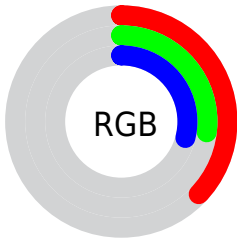
Format	Color
RYB	94, 70, 75
Decimal	6178379
CIELab	32.41, 11.16, 1.00
CIElCh	32, 11.200, 5.100
Yxy	7.2680, 0.3515, 0.3163
Android (android.graphics.Color)	4284368459 (0xFF5E464B)
YUV	77.7460, -1.3538, 14.2548
Hunter-Lab	26.9592, 6.2951, 2.0828

Details

The YUV color **77.7460, -1.3538, 14.2548** is a dark color, and the websafe version is hex **666666**. A complement of this color would be **86.2540, 1.3538, -14.2548**, and the grayscale version is **78.0000, 0.0000, 0.0000**.

A 20% lighter version of the original color is **126.7570, -1.3592, 15.9991**, and **32.8490, -0.9116, 12.4104** is the 20% darker color. If you saturate the color by 10%, you get **71.6650, -1.8068, 19.5878**, and if you desaturate by 10%, it is **83.8270, -0.9007, 8.9217**.

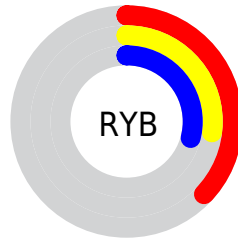
Distribution



 Red (37%)

 Green (27%)

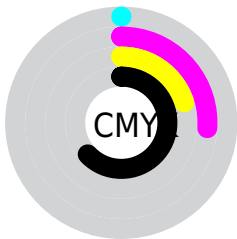
 Blue (29%)



 Red (37%)

 Yellow (27%)

 Blue (29%)

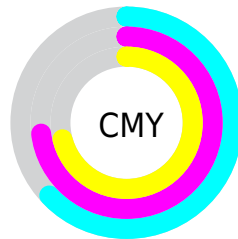



 Cyan (0%)

 Magenta (26%)

 Yellow (20%)

 Black (63%)



 Cyan (63%)

 Magenta (73%)

 Yellow (71%)

Brightness & Saturation Gradients

These gradients show how the YUV color 77.7460, -1.3538, 14.2548 changes by changing the brightness by 10 percent. The first figure shows a shift by +10% for each color and the second figure -10%.

Similar to the brightness gradients but the following saturation gradients show a change of the YUV color 77.7460, -1.3538, 14.2548 by changing the saturation by 10% instead.

■ 77.7460, -1.3538,
14.2548

■ 77.7460, -1.3538,
14.2548

■ 255.0000, 0.0000,
0.0000

■ 55.0340, -1.4958,
13.1252

■ 126.7570, -1.3592,
15.9991

■ 32.8490, -0.9116,
12.4104

■ 152.6430, -1.7960,
16.0991

■ 9.1700, -1.0698,
16.5139

■ 179.9420, -1.9434,
16.7139

■ 0.0000, 0.0000,
0.0000

■ 207.3550, -1.6540,
17.2287

■ 235.3550, -1.6540,
17.2287

■ 77.7460, -1.3538,
14.2548

■ 77.7460, -1.3538,
14.2548

■ 71.6650, -1.8068,
19.5878

■ 83.8270, -0.9007,
8.9217

■ 64.8830, -2.4073,
25.5356

■ 90.6090, -0.3002,
2.9739

■ 58.8020, -2.8604,
30.8686

■ 96.6900, 0.1528,
-2.3591

■ 52.0200, -3.4609,
36.8165

■ 103.4720, 0.7533,
-8.3069

■ 45.9390, -3.9139,
42.1495

■ 109.5530, 1.2064,
-13.6400

■ 39.7440, -4.8038,
47.5825

■ 115.7480, 2.0962,
-19.0730

■ 33.0760, -4.9675,
53.4303

■ 122.4160, 2.2599,
-24.9208

■ 30.3860, -5.1203,

■ 128.6110, 3.1498,

55.7895

-30.3538

■ 135.2790, 3.3135,
-36.2017

Harmonies

Analogous

The Analogous color harmony consists of three colors that are next to each other on the color wheel.



77.8640, 3.0250, 9.7663



77.7460, -1.3538, 14.2548



77.3070, -5.5744, 14.6398

Triad

The Triadic color harmony groups three colors that are evenly spaced from another and form a triangle on the color wheel.



77.7460, -1.3538, 14.2548



74.9690, -6.3937, -2.6038



74.2030, 8.7739, -14.2100

Complementary

The Complementary color scheme is a pair of colors which are on the opposite of each other on the color wheel.



77.7460, -1.3538, 14.2548



86.2540, 1.3538, -14.2548

Split Complementary

Split-complementary colors differ from the complementary color scheme. The scheme consists of three colors, the original color and two neighbors of the complement color.



72.8990, 6.4588, -18.3284



77.7460, -1.3538, 14.2548



73.9510, -2.4408, -10.4810

Square

The Square scheme is like the rectangle color scheme, but the four colors are evenly spaced on the color wheel.



77.7460, -1.3538, 14.2548



75.5570, -8.1626, 4.7735



72.4710, 2.2328, -16.1991



75.6600, 9.0416, -6.7178

Rectangle

The Rectangle color scheme consists of four colors that form a rectangle on the color wheel.



77.7460, -1.3538, 14.2548



76.5410, -7.1687, 12.6805



72.4710, 2.2328, -16.1991



73.6650, 8.0532, -16.3692

Sweetspot

The Sweet Spot groups the original color and five complimentary colors.



77.7460, -1.3538, 14.2548



115.9190, -0.4531, 5.3330



78.4170, 7.6824, 9.2813



56.9080, -0.4476, 3.5887



189.0000, 0.0000, 0.0000



61.0000, 0.0000, 0.0000

Same Dimension

The Same Dimension uses a secret algorithm to generate beautiful new colors.



77.7460, -1.3538, 14.2548



96.2740, -2.1071, 22.5617



81.2850, -5.5635, 11.1511



42.6090, -0.3002, 2.9739



35.5120, -6.1684, 65.3260



76.4490, -13.5324, 140.8032

Inverse Universe

The Inverse Universe completely reimagines the original color for something new.



77.7460, -1.3538, 14.2548



96.2740, -2.1071, 22.5617



82.7150, 5.5635, -11.1511



42.6090, -0.3002, 2.9739



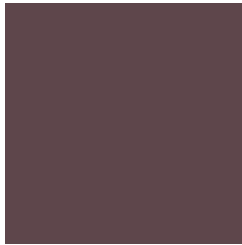
35.5120, -6.1684, 65.3260



76.4490, -13.5324, 140.8032

Previews

White Background



This preview shows how the YUV color 77.7460, -1.3538, 14.2548 looks on a white background.

Color Contrast Check

Large Text (above 18pt) WCAG AA ✓ Pass

Any Text WCAG AA ✓ Pass

Large Text (above 18pt) WCAG AAA ✓ Pass

Any Text WCAG AAA ✓ Pass

Black Background



This preview shows how the YUV color 77.7460, -1.3538, 14.2548 looks on a black background.

Color Contrast Check

Large Text (above 18pt) WCAG AA × Fail

Any Text WCAG AA × Fail

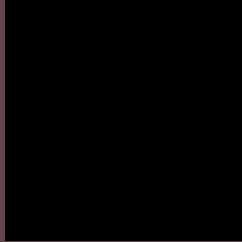
Large Text (above 18pt) WCAG AAA × Fail

Any Text WCAG AAA × Fail

If you want to check with other color combinations, try the [Color Contrast Checker](#).

YUV 77.7460, -1.3538, 14.2548

Background



This preview shows how black text looks on a background with the YUV color 77.7460, -1.3538, 14.2548.

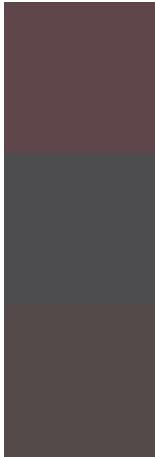


This preview shows how white text looks on a background with the YUV color 77.7460, -1.3538,

Color Blindness Simulation

Color vision deficiency is a very complex topic, and I could not describe the different causes any better than Wikipedia does, so if you want to learn more, you should check out their [article about color blindness](#).

Dichromacy



Original Color

77.7460, -1.3538, 14.2548

Protanopia

76.5270, 0.7262, 0.4148

Deuteranopia

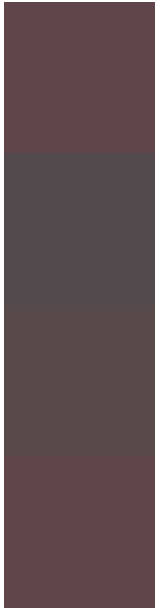
77.2890, -1.6215, 6.7625



Tritanopia

77.7460, -1.3538, 14.2548

Trichromacy



Original Color

77.7460, -1.3538, 14.2548

Protanomaly

77.0330, -0.0163, 5.2331

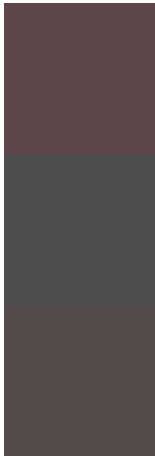
Deuteranomaly

77.5990, -1.7743, 9.1217

Tritanomaly

77.7460, -1.3538, 14.2548

Monochromacy



Original Color

77.7460, -1.3538, 14.2548

Achromatopsia

78.0000, 0.0000, 0.0000

Achromatomaly

77.9190, -0.4531, 5.3330

CSS Examples

Text

The CSS property to change the color of the text to YUV 77.7460, -1.3538, 14.2548 is called "color". The color property can be set on classes, ids or directly on the HTML element.

This example shows how text in the color `rgb(94, 70, 75)` looks like.

```
.text, #text, p{  
    color:rgb(94, 70, 75)  
}
```

If you want to add a text shadow in that color use the text-shadow property, you can generate a text shadow directly with our [CSS Text Shadow Generator](#).

Here you see how black text with a 4 pixel rgb(94, 70, 75) colored shadow looks like.

```
.shadow{ text-shadow: 4px 4px 2px rgb(94, 70, 75) }
```

Border

The CSS property to change the border of an element to YUV 77.7460, -1.3538, 14.2548 is called "border". The border property can be set on classes, ids or directly on the HTML element.

This example shows the color as border, it can be applied via the CSS property "border" or "border-color".

```
.border, #border, table{ border:4px solid rgb(94, 70, 75) }
```


If only the border color should be changed use the property border-color.

```
.border{ border-color:rgb(94, 70, 75) }
```

If you want to add a box shadow in that color use:

Here you see how a box with a 4 pixel rgb(94, 70, 75) colored shadow looks like.

```
.boxshadow{ -moz-box-shadow:4px 4px 4px  
4px rgb(94, 70, 75); -webkit-box-  
shadow:4px 4px 4px 4px rgb(94, 70, 75);  
box-shadow:4px 4px 4px 4px rgb(94, 70, 75)  
}
```

Background

The CSS property to change the background color of an element to YUV 77.7460, -1.3538, 14.2548 is called "background". The background property can be set on classes, ids or directly on the HTML element.

```
.background, #background, body{  
background: rgb(94, 70, 75) }
```

If only the background color should be changed can be used:

```
.background{ background-color: rgb(94, 70,  
75) }
```

This example shows the color as background, it is applied via the CSS property "background".

To optimize and compress your CSS code, you can use our [online CSS compressor and optimizer](#) based on csstidy. If you want to create a linear or radial gradient as background or border, check our [CSS Gradient Generator](#).

Hey! You found this booklet interesting? Support Converting Colors with the new Membership Option!

The pro membership hides all ads, plus gives you double the colors in the color bucket, and more awesome pro features!

[Learn more, Memberships starting at \\$2.50/m!](#)

**Follow me
on Twitter!**

@ConvertingColor