

Converting Colors

YUV(77.9320, -6.8685, 9.7066)

Have a look what the booklet for
YUV(77.9320, -6.8685, 9.7066)
contains.

YUV(77.9320, -6.8685, 9.7066)	3
<i>Conversions</i>	4
<i>Details</i>	6
<i>Harmonies</i>	12
<i>Previews</i>	24
<i>Color Blindness Simulation</i>	28
<i>CSS Examples</i>	31

Color

**YUV(77.9320, -6.8685,
9.7066)**

Conversions

Conversions Part 1

Format	Color
Hex	594B40
RGB	89, 75, 64
RGB Percent	35%, 29%, 25%
CMY	0.6510, 0.7059, 0.7490
CMYK	0.00, 0.16, 0.28, 0.65
HSL	26°, 16%, 30%
HSV	26°, 28%, 35%
XYZ	7.5613, 7.5262, 5.9047
YIQ	77.9320, 11.8750, -0.4530

Conversions

Conversions Part 2

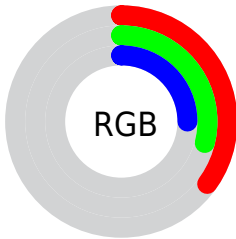
Format	Color
RYB	89, 84, 64
Decimal	5851968
CIELab	32.98, 3.94, 8.74
CIElCh	33, 9.586, 65.739
Yxy	7.5262, 0.3602, 0.3585
Android (android.graphics.Color)	4284042048 (0xFF594B40)
YUV	77.9320, -6.8685, 9.7066
Hunter-Lab	27.4339, 1.1889, 6.4426

Details

The YUV color **77.9320, -6.8685, 9.7066** is a dark color, and the websafe version is hex **666666**. A complement of this color would be **75.0680, 6.8685, -9.7066**, and the grayscale version is **78.0000, 0.0000, 0.0000**.

A 20% lighter version of the original color is **127.1170, -7.4527, 10.4214**, and **33.5620, -5.7001, 8.2771** is the 20% darker color. If you saturate the color by 10%, you get **73.9710, -9.3527, 13.1804**, and if you desaturate by 10%, it is **81.8930, -4.3842, 6.2328**.

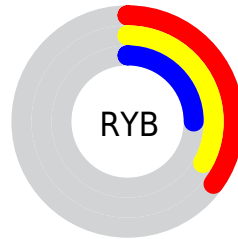
Distribution



Red (35%)

Green (29%)

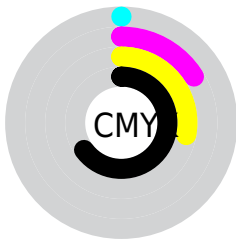
Blue (25%)



Red (35%)

Yellow (33%)

Blue (25%)

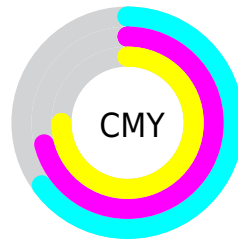


Cyan (0%)

Magenta (16%)

Yellow (28%)

Black (65%)



Cyan (65%)

Magenta (71%)

Yellow (75%)

Brightness & Saturation Gradients

These gradients show how the YUV color 77.9320, -6.8685, 9.7066 changes by changing the brightness by 10 percent. The first figure shows a shift by +10% for each color and the second figure -10%.

Similar to the brightness gradients but the following saturation gradients show a change of the YUV color 77.9320, -6.8685, 9.7066 by changing the saturation by 10% instead.

■ 77.9320, -6.8685,
9.7066

■ 77.9320, -6.8685,
9.7066

255.0000, 0.0000,
0.0000

■ 54.7470, -6.2843,
8.9919

■ 127.1170, -7.4527,
10.4214

■ 33.5620, -5.7001,
8.2771

■ 153.3020, -8.0369,
11.1361

■ 10.6870, -5.2687,
9.9215

■ 179.6010, -8.1843,
11.7509

■ 0.0000, 0.0000,
0.0000

■ 207.4870, -8.6211,
11.8509

■ 235.7860, -8.7685,
12.4657

■ 254.0880, -3.4944,

0.7998

■ 77.9320, -6.8685,
9.7066

■ 77.9320, -6.8685,
9.7066

■ 73.9710, -9.3527,
13.1804

■ 81.8930, -4.3842,
6.2328

■ 70.0100, -11.8369,
16.6542

■ 85.8540, -1.9000,
2.7590

■ 66.0490, -14.3212,
20.1280

■ 89.8150, 0.5842,
-0.7148

■ 62.0880, -16.8054,
23.6018

■ 93.7760, 3.0684,
-4.1886

■ 58.2410, -18.8528,
26.9756

■ 97.7370, 5.5527,
-7.6623

■ 54.2800, -21.3370,
30.4494

■ 101.5840, 7.6001,
-11.0362

■ 50.3190, -23.8213,
33.9232

■ 105.5450, 10.0843,
-14.5100

■ 49.5040, -24.4055,
34.6380

■ 109.5060, 12.5685,
-17.9838

■ 113.4670, 15.0528,
-21.4576

Harmonies

Analogous

The Analogous color harmony consists of three colors that are next to each other on the color wheel.



78.5240, -4.6953, 12.6955



77.9320, -6.8685, 9.7066



76.8990, -6.8522, 4.4736

Triad

The Triadic color harmony groups three colors that are evenly spaced from another and form a triangle on the color wheel.



77.9320, -6.8685, 9.7066



74.7810, 2.0800, -13.8399



78.5040, 5.6675, 2.1890

Complementary

The Complementary color scheme is a pair of colors which are on the opposite of each other on the color wheel.



77.9320, -6.8685, 9.7066



75.0680, 6.8685, -9.7066

Split Complementary

Split-complementary colors differ from the complementary color scheme. The scheme consists of three colors, the original color and two neighbors of the complement color.



77.5030, 7.1470, -5.7031



77.9320, -6.8685, 9.7066



75.2800, 5.2850, -15.1546

Square

The Square scheme is like the rectangle color scheme, but the four colors are evenly spaced on the color wheel.



77.9320, -6.8685, 9.7066



75.0760, -2.0095, -8.8367



75.8720, 7.4581, -12.1657



79.0380, 2.4463, 8.7367

Rectangle

The Rectangle color scheme consists of four colors that form a rectangle on the color wheel.



77.9320, -6.8685, 9.7066



76.3930, -6.1097, -0.3447



75.8720, 7.4581, -12.1657



78.3080, 6.2572, -0.2701

Sweetspot

The Sweet Spot groups the original color and five complimentary colors.



77.9320, -6.8685, 9.7066



111.0390, -2.4842, 3.4738



73.0710, 2.4300, 13.9697



55.9680, -1.4632, 2.6591



186.0000, 0.0000, 0.0000



59.0000, 0.0000, 0.0000

Same Dimension

The Same Dimension uses a secret algorithm to generate beautiful new colors.



77.9320, -6.8685, 9.7066



97.6400, -10.6685, 15.2247



84.9760, -10.3412, 3.5290



41.3700, -1.1684, 1.4295



59.5820, -29.3739, 41.5856



130.7260, -64.4479, 91.4483

Inverse Universe

The Inverse Universe completely reimagines the original color for something new.



75.0680, 6.8685, -9.7066



93.3600, 10.6685, -15.2247



68.0240, 10.3412, -3.5290



40.6300, 1.1684, -1.4295



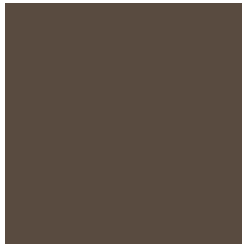
47.4180, 29.3739, -41.5856



103.6870, 64.7373, -90.9335

Previews

White Background



This preview shows how the YUV color 77.9320, -6.8685, 9.7066 looks on a white background.

Color Contrast Check

Large Text (above 18pt) WCAG AA ✓ Pass

Any Text WCAG AA ✓ Pass

Large Text (above 18pt) WCAG AAA ✓ Pass

Any Text WCAG AAA ✓ Pass

Black Background



This preview shows how the YUV color 77.9320, -6.8685, 9.7066 looks on a black background.

Color Contrast Check

Large Text (above 18pt) WCAG AA × Fail

Any Text WCAG AA × Fail

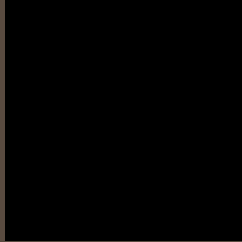
Large Text (above 18pt) WCAG AAA × Fail

Any Text WCAG AAA × Fail

If you want to check with other color combinations, try the [Color Contrast Checker](#).

YUV 77.9320, -6.8685, 9.7066

Background



This preview shows how black text looks on a background with the YUV color 77.9320, -6.8685, 9.7066.



This preview shows how white text looks on a background with the YUV color 77.9320, -6.8685,

Color Blindness Simulation

Color vision deficiency is a very complex topic, and I could not describe the different causes any better than Wikipedia does, so if you want to learn more, you should check out their [article about color blindness](#).

Dichromacy



Original Color

77.9320, -6.8685, 9.7066

Protanopia

77.1270, -5.9786, 4.2736

Deuteranopia

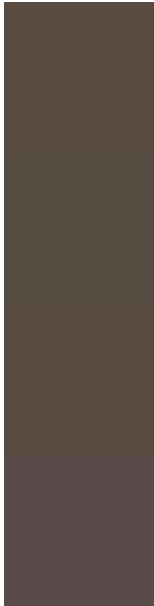
78.2310, -7.0159, 10.3214



Tritanopia

79.0660, -0.0325, 10.4661

Trichromacy



Original Color

77.9320, -6.8685, 9.7066

Protanomaly

77.4370, -6.1314, 6.6328

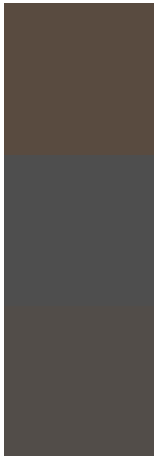
Deuteranomaly

78.2310, -7.0159, 10.3214

Tritanomaly

78.7840, -2.3585, 9.8364

Monochromacy



Original Color

77.9320, -6.8685, 9.7066

Achromatopsia

78.0000, 0.0000, 0.0000

Achromatomaly

78.0390, -2.4842, 3.4738

CSS Examples

Text

The CSS property to change the color of the text to YUV 77.9320, -6.8685, 9.7066 is called "color". The color property can be set on classes, ids or directly on the HTML element.

This example shows how text in the color `rgb(89, 75, 64)` looks like.

```
.text, #text, p{  
    color:rgb(89, 75, 64)  
}
```

If you want to add a text shadow in that color use the text-shadow property, you can generate a text shadow directly with our [CSS Text Shadow Generator](#).

Here you see how black text with a 4 pixel rgb(89, 75, 64) colored shadow looks like.

```
.shadow{ text-shadow: 4px 4px 2px rgb(89, 75, 64) }
```

Border

The CSS property to change the border of an element to YUV 77.9320, -6.8685, 9.7066 is called "border". The border property can be set on classes, ids or directly on the HTML element.

This example shows the color as border, it can be applied via the CSS property "border" or "border-color".

```
.border, #border, table{ border:4px solid rgb(89, 75, 64) }
```


If only the border color should be changed use the property `border-color`.

```
.border{ border-color:rgb(89, 75, 64) }
```

If you want to add a box shadow in that color use:

Here you see how a box with a 4 pixel `rgb(89, 75, 64)` colored shadow looks like.

```
.boxshadow{ -moz-box-shadow:4px 4px 4px  
4px rgb(89, 75, 64); -webkit-box-  
shadow:4px 4px 4px 4px rgb(89, 75, 64);  
box-shadow:4px 4px 4px 4px rgb(89, 75, 64)  
}
```

Background

The CSS property to change the background color of an element to YUV 77.9320, -6.8685, 9.7066 is called "background". The background property can be set on classes, ids or directly on the HTML element.

```
.background, #background, body{  
background: rgb(89, 75, 64) }
```

If only the background color should be changed can be used:

```
.background{ background-color: rgb(89, 75,  
64) }
```

This example shows the color as background, it is applied via the CSS property "background".

To optimize and compress your CSS code, you can use our [online CSS compressor and optimizer](#) based on csstidy. If you want to create a linear or radial gradient as background or border, check our [CSS Gradient Generator](#).

Hey! You found this booklet interesting? Support Converting Colors with the new Membership Option!

The pro membership hides all ads, plus gives you double the colors in the color bucket, and more awesome pro features!

[Learn more, Memberships starting at \\$2.50/m!](#)

**Follow me
on Twitter!**

@ConvertingColor