

Converting Colors

YUV(79.7790, -1.3700, 19.4878)

Have a look what the booklet for
YUV(79.7790, -1.3700, 19.4878)
contains.

YUV(79.7790, -1.3700, 19.4878)	3
<i>Conversions</i>	4
<i>Details</i>	6
<i>Harmonies</i>	12
<i>Previews</i>	24
<i>Color Blindness Simulation</i>	28
<i>CSS Examples</i>	31

Color

**YUV(79.7790, -1.3700,
19.4878)**

Conversions

Conversions Part 1

Format	Color
Hex	66454D
RGB	102, 69, 77
RGB Percent	40%, 27%, 30%
CMY	0.6000, 0.7294, 0.6980
CMYK	0.00, 0.32, 0.25, 0.60
HSL	345°, 19%, 34%
HSV	345°, 32%, 40%
XYZ	8.9472, 7.6168, 8.0198
YIQ	79.7790, 17.1000, 9.4840

Conversions

Conversions Part 2

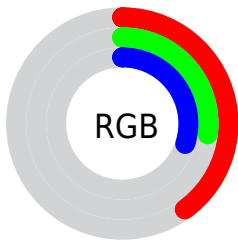
Format	Color
R_{YB}	102, 69, 77
Decimal	6702413
CIE _{Lab}	33.17, 15.50, 0.94
CIE _{LCh}	33, 15.531, 3.481
Yxy	7.6168, 0.3639, 0.3098
Android (android.graphics.Color)	4284892493 (0xFF66454D)
YUV	79.7790, -1.3700, 19.4878
Hunter-Lab	27.5986, 9.5701, 2.0901

Details

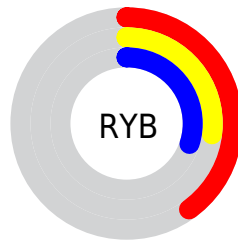
The YUV color **79.7790, -1.3700, 19.4878** is a dark color, and the websafe version is hex **663333**. A complement of this color would be **91.2210, 1.3700, -19.4878**, and the grayscale version is **80.0000, 0.0000, 0.0000**.

A 20% lighter version of the original color is **129.6760, -1.8123, 21.3321**, and **34.5830, -0.7804, 17.0287** is the 20% darker color. If you saturate the color by 10%, you get **72.9970, -1.9705, 25.4356**, and if you desaturate by 10%, it is **86.5610, -0.7696, 13.5400**.

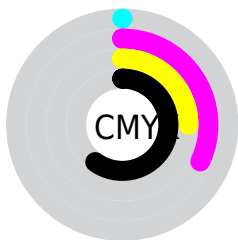
Distribution



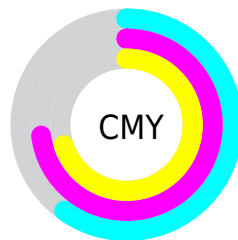
- Red (40%)
- Green (27%)
- Blue (30%)



- Red (40%)
- Yellow (27%)
- Blue (30%)



- Cyan (0%)
- Magenta (32%)
- Yellow (25%)
- Black (60%)



- Cyan (60%)
- Magenta (73%)
- Yellow (70%)

Brightness & Saturation Gradients

These gradients show how the YUV color 79.7790, -1.3700, 19.4878 changes by changing the brightness by 10 percent. The first figure shows a shift by +10% for each color and the second figure -10%.

Similar to the brightness gradients but the following saturation gradients show a change of the YUV color 79.7790, -1.3700, 19.4878 by changing the saturation by 10% instead.

■ 79.7790, -1.3700,
19.4878

■ 79.7790, -1.3700,
19.4878

255.0000, 0.0000,
0.0000

■ 56.1810, -1.0752,
18.2583

■ 129.6760, -1.8123,
21.3321

■ 34.5830, -0.7804,
17.0287

■ 155.3880, -1.6703,
22.4617

■ 11.3060, -0.6439,
19.9026

■ 182.5730, -2.2545,
23.1765

■ 0.0000, 0.0000,
0.0000

■ 209.9860, -1.9651,
23.6913

■ 234.9960, -0.4910,
17.5435

254.4130, 0.2894,

0.5148

■ 79.7790, -1.3700,
19.4878

■ 79.7790, -1.3700,
19.4878

■ 72.9970, -1.9705,
25.4356

■ 86.5610, -0.7696,
13.5400

■ 66.3290, -2.1342,
31.2835

■ 93.2290, -0.6059,
7.6922

■ 58.9600, -2.4453,
37.7461

■ 100.5980, -0.2948,
1.2296

■ 52.1780, -3.0458,
43.6939

■ 107.3800, 0.3057,
-4.7183

■ 45.3960, -3.6462,
49.6417

■ 114.1620, 0.9061,
-10.6661

■ 38.7280, -3.8099,
55.4895

■ 120.8300, 1.0698,
-16.5139

■ 33.3480, -4.1156,
60.2078

■ 127.6120, 1.6703,
-22.4617

■ 134.9810, 1.9814,
-28.9243

■ 141.7630, 2.5818,
-34.8722

Harmonies

Analogous

The Analogous color harmony consists of three colors that are next to each other on the color wheel.



80.2280, 4.3246, 12.9550



79.7790, -1.3700, 19.4878



78.9980, -6.9010, 20.1728

Triad

The Triadic color harmony groups three colors that are evenly spaced from another and form a triangle on the color wheel.



79.7790, -1.3700, 19.4878



75.5730, -9.1565, -3.1335



73.8860, 12.8742, -22.7020

Complementary

The Complementary color scheme is a pair of colors which are on the opposite of each other on the color wheel.



79.7790, -1.3700, 19.4878



91.2210, 1.3700, -19.4878

Split Complementary

Split-complementary colors differ from the complementary color scheme. The scheme consists of three colors, the original color and two neighbors of the complement color.



71.9410, 9.3961, -27.1353



79.7790, -1.3700, 19.4878



74.2880, -3.5930, -14.2846

Square

The Square scheme is like the rectangle color scheme, but the four colors are evenly spaced on the color wheel.



79.7790, -1.3700, 19.4878



77.3570, -11.5150, 6.7029



72.6550, 3.1281, -23.3764



77.4360, 12.1101, -10.9064

Rectangle

The Rectangle color scheme consists of four colors that form a rectangle on the color wheel.



79.7790, -1.3700, 19.4878



78.5910, -9.6584, 17.8987



72.6550, 3.1281, -23.3764



73.2340, 11.7166, -24.7612

Sweetspot

The Sweet Spot groups the original color and five complimentary colors.



79.7790, -1.3700, 19.4878



123.6420, -0.3165, 8.2070



80.2370, 10.7292, 12.0702



60.6200, -0.3057, 4.7183



194.0000, 0.0000, 0.0000



66.0000, 0.0000, 0.0000

Same Dimension

The Same Dimension uses a secret algorithm to generate beautiful new colors.



79.7790, -1.3700, 19.4878



97.9160, -2.4236, 30.7687



83.5630, -7.1796, 16.1692



47.6090, -0.3002, 2.9739



37.5770, -4.7215, 67.9000



79.0840, -9.9014, 142.8773

Inverse Universe

The Inverse Universe completely reimagines the original color for something new.



79.7790, -1.3700, 19.4878



97.9160, -2.4236, 30.7687



87.4370, 7.1796, -16.1692



47.6090, -0.3002, 2.9739



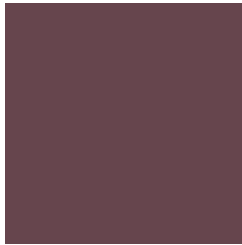
37.5770, -4.7215, 67.9000



79.0840, -9.9014, 142.8773

Previews

White Background



This preview shows how the YUV color 79.7790, -1.3700, 19.4878 looks on a white background.

Color Contrast Check

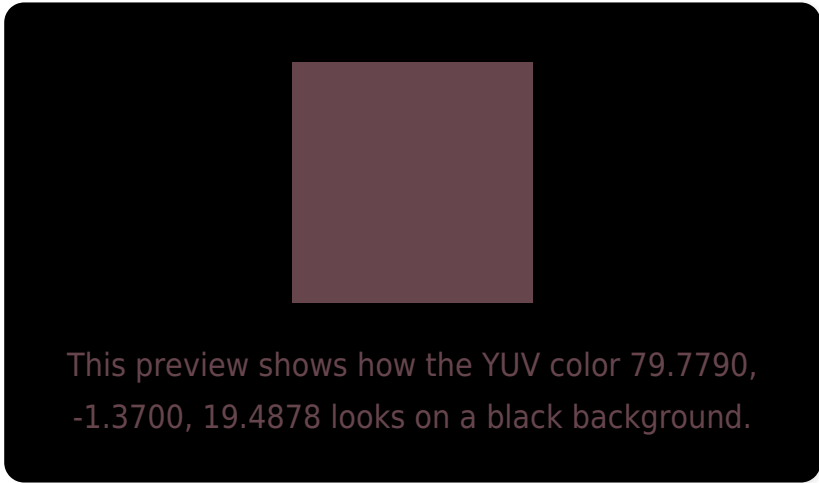
Large Text (above 18pt) WCAG AA ✓ Pass

Any Text WCAG AA ✓ Pass

Large Text (above 18pt) WCAG AAA ✓ Pass

Any Text WCAG AAA ✓ Pass

Black Background



Color Contrast Check

Large Text (above 18pt) WCAG AA × Fail

Any Text WCAG AA × Fail

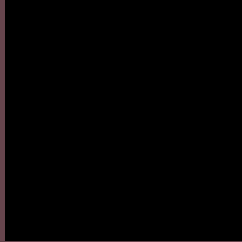
Large Text (above 18pt) WCAG AAA × Fail

Any Text WCAG AAA × Fail

If you want to check with other color combinations, try the [Color Contrast Checker](#).

YUV 79.7790, -1.3700, 19.4878

Background



This preview shows how black text looks on a background with the YUV color 79.7790, -1.3700, 19.4878.



This preview shows how white text looks on a background with the YUV color 79.7790, -1.3700,

Color Blindness Simulation

Color vision deficiency is a very complex topic, and I could not describe the different causes any better than Wikipedia does, so if you want to learn more, you should check out their [article about color blindness](#).

Dichromacy



Original Color

79.7790, -1.3700, 19.4878

Protanopia

78.7550, 1.5998, 0.2149

Deuteranopia

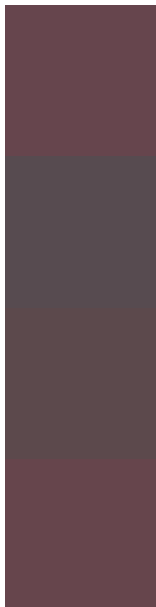
79.2890, -1.6215, 6.7625



Tritanopia

79.5510, -2.2436, 19.6878

Trichromacy



Original Color

79.7790, -1.3700, 19.4878

Protanomaly

79.1580, 0.4151, 6.8774

Deuteranomaly

79.0230, -1.4903, 11.3808

Tritanomaly

79.6650, -1.8068, 19.5878

Monochromacy



Original Color

79.7790, -1.3700, 19.4878

Achromatopsia

80.0000, 0.0000, 0.0000

Achromatomaly

79.9300, -0.4585, 7.0774

CSS Examples

Text

The CSS property to change the color of the text to YUV 79.7790, -1.3700, 19.4878 is called "color". The color property can be set on classes, ids or directly on the HTML element.

This example shows how text in the color `rgb(102, 69, 77)` looks like.

```
.text, #text, p{  
    color:rgb(102, 69, 77)  
}
```

If you want to add a text shadow in that color use the text-shadow property, you can generate a text shadow directly with our [CSS Text Shadow Generator](#).

Here you see how black text with a 4 pixel rgb(102, 69, 77) colored shadow looks like.

```
.shadow{ text-shadow: 4px 4px 2px rgb(102, 69, 77) }
```

Border

The CSS property to change the border of an element to YUV 79.7790, -1.3700, 19.4878 is called "border". The border property can be set on classes, ids or directly on the HTML element.

This example shows the color as border, it can be applied via the CSS property "border" or "border-color".

```
.border, #border, table{ border:4px solid rgb(102, 69, 77) }
```


If only the border color should be changed use the property border-color.

```
.border{ border-color:rgb(102, 69, 77) }
```

If you want to add a box shadow in that color use:

Here you see how a box with a 4 pixel rgb(102, 69, 77) colored shadow looks like.

```
.boxshadow{ -moz-box-shadow:4px 4px 4px  
4px rgb(102, 69, 77); -webkit-box-  
shadow:4px 4px 4px 4px rgb(102, 69, 77);  
box-shadow:4px 4px 4px 4px rgb(102, 69,  
77) }
```

Background

The CSS property to change the background color of an element to YUV 79.7790, -1.3700, 19.4878 is called "background". The background property can be set on classes, ids or directly on the HTML element.

```
.background, #background, body{  
background: rgb(102, 69, 77) }
```

If only the background color should be changed can be used:

```
.background{ background-color: rgb(102, 69,  
77) }
```

This example shows the color as background, it is applied via the CSS property "background".

To optimize and compress your CSS code, you can use our [online CSS compressor and optimizer](#) based on csstidy. If you want to create a linear or radial gradient as background or border, check our [CSS Gradient Generator](#).

Hey! You found this booklet interesting? Support Converting Colors with the new Membership Option!

The pro membership hides all ads, plus gives you double the colors in the color bucket, and more awesome pro features!

[Learn more, Memberships starting at \\$2.50/m!](#)

**Follow me
on Twitter!**

@ConvertingColor