

Converting Colors

YUV(81.5450, 0.2243, 21.4470)

Have a look what the booklet for
YUV(81.5450, 0.2243, 21.4470)
contains.

YUV(81.5450, 0.2243, 21.4470)	3
<i>Conversions</i>	4
<i>Details</i>	6
<i>Harmonies</i>	12
<i>Previews</i>	24
<i>Color Blindness Simulation</i>	28
<i>CSS Examples</i>	31

Color

**YUV(81.5450, 0.2243,
21.4470)**

Conversions

Conversions Part 1

Format	Color
Hex	6A4552
RGB	106, 69, 82
RGB Percent	42%, 27%, 32%
CMY	0.5843, 0.7294, 0.6784
CMYK	0.00, 0.35, 0.23, 0.58
HSL	339°, 21%, 34%
HSV	339°, 35%, 42%
XYZ	9.5950, 7.9296, 9.0075
YIQ	81.5450, 17.8790, 11.8870

Conversions

Conversions Part 2

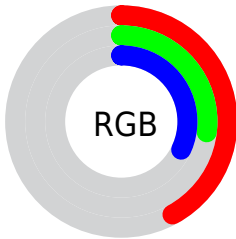
Format	Color
R_{YB}	106, 69, 82
Decimal	6964562
CIE Lab	33.84, 18.00, -1.22
CIE LCh	34, 18.044, 356.118
Yxy	7.9296, 0.3616, 0.2989
Android (android.graphics.Color)	4285154642 (0xFF6A4552)
YUV	81.5450, 0.2243, 21.4470
Hunter-Lab	28.1596, 11.5421, 0.7464

Details

The YUV color **81.5450, 0.2243, 21.4470** is a dark color, and the websafe version is hex **663333**. A complement of this color would be **93.4550, -0.2243, -21.4470**, and the grayscale version is **82.0000, 0.0000, 0.0000**.

A 20% lighter version of the original color is **131.4420, -0.2179, 23.2914**, and **35.9360, 0.5246, 18.4731** is the 20% darker color. If you saturate the color by 10%, you get **74.2900, 0.3500, 27.8097**, and if you desaturate by 10%, it is **88.8000, 0.0986, 15.0844**.

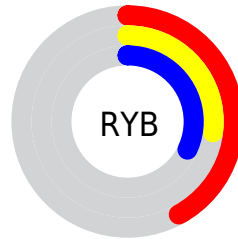
Distribution



Red (42%)

Green (27%)

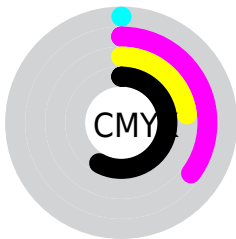
Blue (32%)



Red (42%)

Yellow (27%)

Blue (32%)

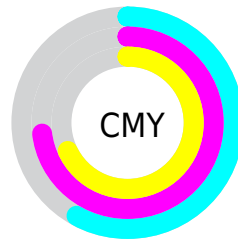


Cyan (0%)

Magenta (35%)

Yellow (23%)

Black (58%)



Cyan (58%)

Magenta (73%)

Yellow (68%)

Brightness & Saturation Gradients

These gradients show how the YUV color 81.5450, 0.2243, 21.4470 changes by changing the brightness by 10 percent. The first figure shows a shift by +10% for each color and the second figure -10%.

Similar to the brightness gradients but the following saturation gradients show a change of the YUV color 81.5450, 0.2243, 21.4470 by changing the saturation by 10% instead.

81.5450, 0.2243,
21.4470

81.5450, 0.2243,
21.4470

255.0000, 0.0000,
0.0000

57.9470, 0.5191,
20.2175

131.4420, -0.2179,
23.2914

35.9360, 0.5246,
18.4731

157.7410, -0.3653,
23.9061

12.7020, 2.1189,
20.4323

184.4530, -0.2233,
25.0357

0.0000, 0.0000,
0.0000

212.1650, -0.0813,
26.1653

236.2670, 1.8404,
16.4288

254.4130, 0.2894,

0.5148

■ 81.5450, 0.2243,
21.4470

■ 81.5450, 0.2243,
21.4470

■ 74.2900, 0.3500,
27.8097

■ 88.8000, 0.0986,
15.0844

■ 67.6220, 0.1864,
33.6575

■ 95.4680, 0.2623,
9.2366

■ 60.3670, 0.3121,
40.0201

■ 102.7230, 0.1366,
2.8739

■ 53.6990, 0.1484,
45.8680


■ 109.3910, 0.3002,
-2.9739

■ 46.5580, 0.7109,
52.1306


■ 116.5320, -0.2623,
-9.2366


■ 39.3030, 0.8366,
58.4933

■ 123.7870, -0.3880,
-15.5992

 35.9120, 0.5364,
61.4672

 130.4550, -0.2243,
-21.4470

 137.7100, -0.3500,
-27.8097

 144.3780, -0.1864,
-33.6575

Harmonies

Analogous

The Analogous color harmony consists of three colors that are next to each other on the color wheel.



81.9120, 6.9454, 12.3552



81.5450, 0.2243, 21.4470



81.1340, -6.4751, 23.5615

Triad

The Triadic color harmony groups three colors that are evenly spaced from another and form a triangle on the color wheel.



81.5450, 0.2243, 21.4470



77.9000, -11.7827, -0.7893



73.2980, 14.6431, -30.0793

Complementary

The Complementary color scheme is a pair of colors which are on the opposite of each other on the color wheel.



81.5450, 0.2243, 21.4470



93.4550, -0.2243, -21.4470

Split Complementary

Split-complementary colors differ from the complementary color scheme. The scheme consists of three colors, the original color and two neighbors of the complement color.



71.4240, 10.1440, -33.6978



81.5450, 0.2243, 21.4470



75.6040, -6.2138, -13.6847

Square

The Square scheme is like the rectangle color scheme, but the four colors are evenly spaced on the color wheel.



81.5450, 0.2243, 21.4470



78.8090, -13.7098, 10.6915



73.0030, 1.9705, -25.4356



77.2010, 15.1839, -16.8393

Rectangle

The Rectangle color scheme consists of four colors that form a rectangle on the color wheel.



81.5450, 0.2243, 21.4470



80.4990, -10.1060, 21.4874



73.0030, 1.9705, -25.4356



72.3470, 13.6329, -32.7533

Sweetspot

The Sweet Spot groups the original color and five complimentary colors.



81.5450, 0.2243, 21.4470



128.7560, 0.1203, 8.1070



80.0950, 12.7712, 10.4407



63.6200, -0.3057, 4.7183



196.0000, 0.0000, 0.0000



69.0000, 0.0000, 0.0000

Same Dimension

The Same Dimension uses a secret algorithm to generate beautiful new colors.



81.5450, 0.2243, 21.4470



99.6220, 0.1864, 33.6575



82.9980, -6.9010, 20.1728



50.0220, -0.0108, 3.4887



39.6570, 0.6621, 67.8298



83.0590, 1.4499, 142.0223

Inverse Universe

The Inverse Universe completely reimagines the original color for something new.



81.5450, 0.2243, 21.4470



99.6220, 0.1864, 33.6575



92.0020, 6.9010, -20.1728



50.0220, -0.0108, 3.4887



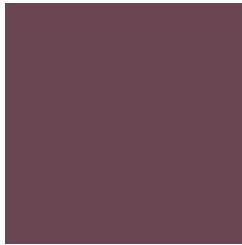
39.6570, 0.6621, 67.8298



83.0590, 1.4499, 142.0223

Previews

White Background



This preview shows how the YUV color 81.5450, 0.2243, 21.4470 looks on a white background.

Color Contrast Check

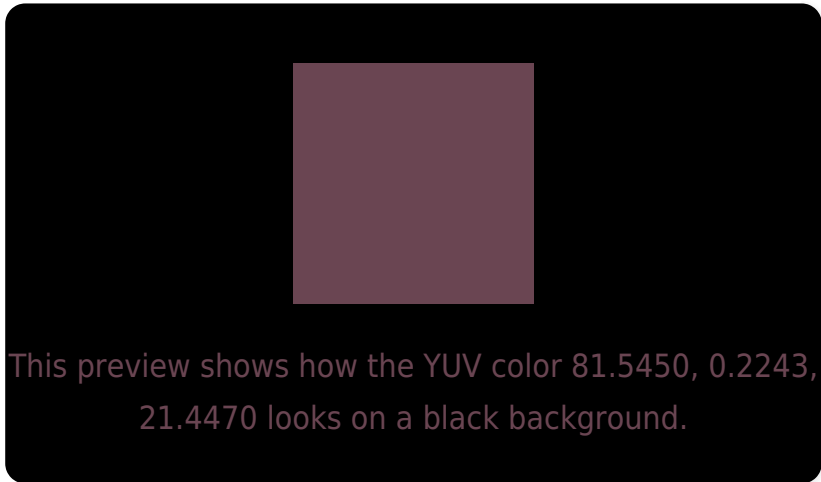
Large Text (above 18pt) WCAG AA ✓ Pass

Any Text WCAG AA ✓ Pass

Large Text (above 18pt) WCAG AAA ✓ Pass

Any Text WCAG AAA ✓ Pass

Black Background



Color Contrast Check

Large Text (above 18pt) WCAG AA × Fail

Any Text WCAG AA × Fail

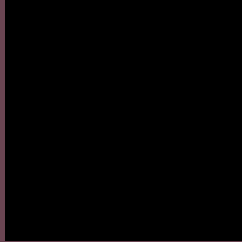
Large Text (above 18pt) WCAG AAA × Fail

Any Text WCAG AAA × Fail

If you want to check with other color combinations, try the [Color Contrast Checker](#).

YUV 81.5450, 0.2243, 21.4470

Background



This preview shows how black text looks on a background with the YUV color 81.5450, 0.2243, 21.4470.



This preview shows how white text looks on a background with the YUV color 81.5450, 0.2243,

Color Blindness Simulation

Color vision deficiency is a very complex topic, and I could not describe the different causes any better than Wikipedia does, so if you want to learn more, you should check out their [article about color blindness](#).

Dichromacy



Original Color

81.5450, 0.2243, 21.4470

Protanopia

80.0260, 3.9312, -0.8998

Deuteranopia

80.3320, -0.1637, 5.8478



Tritanopia

81.0350, -2.9753, 21.0173

Trichromacy



Original Color

81.5450, 0.2243, 21.4470

Protanomaly

80.4400, 2.7411, 7.5071

Deuteranomaly

80.7780, 0.1094, 11.5957

Tritanomaly

81.3770, -1.6649, 20.7174

Monochromacy



Original Color

81.5450, 0.2243, 21.4470

Achromatopsia

82.0000, 0.0000, 0.0000

Achromatomaly

81.7560, 0.1203, 8.1070

CSS Examples

Text

The CSS property to change the color of the text to YUV 81.5450, 0.2243, 21.4470 is called "color". The color property can be set on classes, ids or directly on the HTML element.

This example shows how text in the color `rgb(106, 69, 82)` looks like.

```
.text, #text, p{  
    color:rgb(106, 69, 82)  
}
```

If you want to add a text shadow in that color use the text-shadow property, you can generate a text shadow directly with our [CSS Text Shadow Generator](#).

Here you see how black text with a 4 pixel rgb(106, 69, 82) colored shadow looks like.

```
.shadow{ text-shadow: 4px 4px 2px rgb(106, 69, 82) }
```

Border

The CSS property to change the border of an element to YUV 81.5450, 0.2243, 21.4470 is called "border". The border property can be set on classes, ids or directly on the HTML element.

This example shows the color as border, it can be applied via the CSS property "border" or "border-color".

```
.border, #border, table{ border:4px solid rgb(106, 69, 82) }
```


If only the border color should be changed use the property border-color.

```
.border{ border-color:rgb(106, 69, 82) }
```

If you want to add a box shadow in that color use:

Here you see how a box with a 4 pixel rgb(106, 69, 82) colored shadow looks like.

```
.boxshadow{ -moz-box-shadow:4px 4px 4px  
4px rgb(106, 69, 82); -webkit-box-  
shadow:4px 4px 4px 4px rgb(106, 69, 82);  
box-shadow:4px 4px 4px 4px rgb(106, 69,  
82) }
```

Background

The CSS property to change the background color of an element to YUV 81.5450, 0.2243, 21.4470 is called "background". The background property can be set on classes, ids or directly on the HTML element.

```
.background, #background, body{  
background: rgb(106, 69, 82) }
```

If only the background color should be changed can be used:

```
.background{ background-color: rgb(106, 69,  
82) }
```

This example shows the color as background, it is applied via the CSS property "background".

To optimize and compress your CSS code, you can use our [online CSS compressor and optimizer](#) based on csstidy. If you want to create a linear or radial gradient as background or border, check our [CSS Gradient Generator](#).

Hey! You found this booklet interesting? Support Converting Colors with the new Membership Option!

The pro membership hides all ads, plus gives you double the colors in the color bucket, and more awesome pro features!

[Learn more, Memberships starting at \\$2.50/m!](#)

**Follow me
on Twitter!**

@ConvertingColor