

Converting Colors

YUV(82.1860, -2.0637, 8.6069)

Have a look what the booklet for
YUV(82.1860, -2.0637, 8.6069)
contains.

YUV(82.1860, -2.0637, 8.6069)	3
<i>Conversions</i>	4
<i>Details</i>	6
<i>Harmonies</i>	12
<i>Previews</i>	24
<i>Color Blindness Simulation</i>	28
<i>CSS Examples</i>	31

Color

**YUV(82.1860, -2.0637,
8.6069)**

Conversions

Conversions Part 1

Format	Color
Hex	5C4E4E
RGB	92, 78, 78
RGB Percent	36%, 31%, 31%
CMY	0.6392, 0.6941, 0.6941
CMYK	0.00, 0.15, 0.15, 0.64
HSL	0°, 8%, 33%
HSV	0°, 15%, 36%
XYZ	8.5132, 8.2741, 8.3561
YIQ	82.1860, 8.3440, 2.9680

Conversions

Conversions Part 2

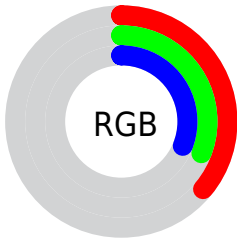
Format	Color
R_{YB}	92, 78, 78
Decimal	6049358
CIE Lab	34.55, 5.83, 2.16
CIE LCh	35, 6.221, 20.305
Yxy	8.2741, 0.3386, 0.3291
Android (android.graphics.Color)	4284239438 (0xFF5C4E4E)
YUV	82.1860, -2.0637, 8.6069
Hunter-Lab	28.7648, 2.4900, 2.9118

Details

The YUV color **82.1860, -2.0637, 8.6069** is a dark color, and the websafe version is hex **666666**. A complement of this color would be **87.8140, 2.0637, -8.6069**, and the grayscale version is **82.0000, 0.0000, 0.0000**.

A 20% lighter version of the original color is **131.4850, -2.2111, 9.2217**, and **37.5880, -1.7689, 7.3773** is the 20% darker color. If you saturate the color by 10%, you get **75.8770, -3.3904, 14.1399**, and if you desaturate by 10%, it is **88.4950, -0.7370, 3.0739**.

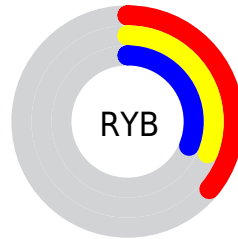
Distribution



Red (36%)

Green (31%)

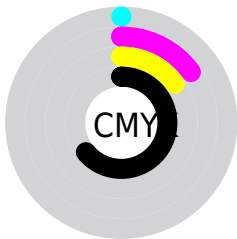
Blue (31%)



Red (36%)

Yellow (31%)

Blue (31%)

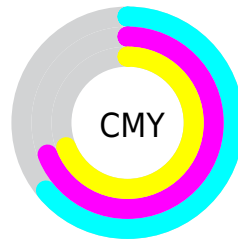


Cyan (0%)

Magenta (15%)

Yellow (15%)

Black (64%)



Cyan (64%)

Magenta (69%)

Yellow (69%)

Brightness & Saturation Gradients

These gradients show how the YUV color 82.1860, -2.0637, 8.6069 changes by changing the brightness by 10 percent. The first figure shows a shift by +10% for each color and the second figure -10%.

Similar to the brightness gradients but the following saturation gradients show a change of the YUV color 82.1860, -2.0637, 8.6069 by changing the saturation by 10% instead.

■ 82.1860, -2.0637,
8.6069

■ 82.1860, -2.0637,
8.6069

■ 255.0000, 0.0000,
0.0000

■ 58.8870, -1.9163,
7.9921

■ 131.4850, -2.2111,
9.2217

■ 37.5880, -1.7689,
7.3773

■ 157.7840, -2.3585,
9.8364

■ 16.1860, -2.0637,
8.6069

■ 184.7840, -2.3585,
9.8364

■ 0.0000, 0.0000,
0.0000

■ 212.0830, -2.5059,
10.4512

■ 240.3820, -2.6533,
11.0660

82.1860, -2.0637,
8.6069

82.1860, -2.0637,
8.6069

75.8770, -3.3904,
14.1399

88.4950, -0.7370,
3.0739

69.5680, -4.7170,
19.6729

94.8040, 0.5896,
-2.4591

62.5580, -6.1911,
25.8206

101.8140, 2.0637,
-8.6069

56.2490, -7.5178,
31.3536

108.1230, 3.3904,
-14.1399

49.9400, -8.8444,
36.8866

114.4320, 4.7170,
-19.6729

43.6310, -10.1711,
42.4196

120.7410, 6.0437,
-25.2059

37.3220, -11.4977,
47.9526

127.0500, 7.3704,
-30.7388

30.3120, -12.9718,

134.0600, 8.8444,

54.1004

-36.8866

■ 27.5080, -13.5614,
56.5595

■ 140.3690, 10.1711,
-42.4196

Harmonies

Analogous

The Analogous color harmony consists of three colors that are next to each other on the color wheel.



82.1580, 0.4151, 6.8774



82.1860, -2.0637, 8.6069



82.0180, -3.9529, 7.8772

Triad

The Triadic color harmony groups three colors that are evenly spaced from another and form a triangle on the color wheel.



82.1860, -2.0637, 8.6069



79.9950, -2.4625, -3.5036



80.6340, 5.1104, -5.8180

Complementary

The Complementary color scheme is a pair of colors which are on the opposite of each other on the color wheel.



82.1860, -2.0637, 8.6069



87.8140, 2.0637, -8.6069

Split Complementary

Split-complementary colors differ from the complementary color scheme. The scheme consists of three colors, the original color and two neighbors of the complement color.



79.7970, 4.5371, -8.5920



82.1860, -2.0637, 8.6069



79.5430, -0.2677, -7.4922

Square

The Square scheme is like the rectangle color scheme, but the four colors are evenly spaced on the color wheel.



82.1860, -2.0637, 8.6069



80.8600, -4.3680, 0.9998



79.5150, 2.2111, -9.2217



81.7270, 4.0786, -1.5146

Rectangle

The Rectangle color scheme consists of four colors that form a rectangle on the color wheel.



82.1860, -2.0637, 8.6069



81.4800, -4.6736, 5.7180



79.5150, 2.2111, -9.2217



80.8080, 4.5317, -6.8476

Sweetspot

The Sweet Spot groups the original color and five complimentary colors.



82.1860, -2.0637, 8.6069



115.7940, -0.8844, 3.6887



83.7820, 4.0515, 7.2072



58.8970, -0.4422, 1.8443



189.0000, 0.0000, 0.0000



61.0000, 0.0000, 0.0000

Same Dimension

The Same Dimension uses a secret algorithm to generate beautiful new colors.



82.1860, -2.0637, 8.6069



104.5780, -3.2430, 13.5251



86.2950, -4.0894, 5.0033



42.4950, -0.7370, 3.0739



32.8900, -16.2148, 67.6255



70.8630, -34.9355, 145.7021

Inverse Universe

The Inverse Universe completely reimagines the original color for something new.



87.8140, 2.0637, -8.6069



113.4220, 3.2430, -13.5251



83.7050, 4.0894, -5.0033



44.5050, 0.7370, -3.0739



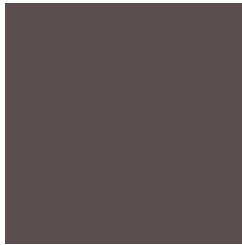
77.1100, 16.2148, -67.6255



166.1370, 34.9355, -145.7021

Previews

White Background



This preview shows how the YUV color 82.1860, -2.0637, 8.6069 looks on a white background.

Color Contrast Check

Large Text (above 18pt) WCAG AA ✓ Pass

Any Text WCAG AA ✓ Pass

Large Text (above 18pt) WCAG AAA ✓ Pass

Any Text WCAG AAA ✓ Pass

Black Background



This preview shows how the YUV color 82.1860, -2.0637, 8.6069 looks on a black background.

Color Contrast Check

Large Text (above 18pt) WCAG AA × Fail

Any Text WCAG AA × Fail

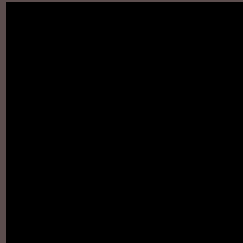
Large Text (above 18pt) WCAG AAA × Fail

Any Text WCAG AAA × Fail

If you want to check with other color combinations, try the [Color Contrast Checker](#).

YUV 82.1860, -2.0637, 8.6069

Background



This preview shows how black text looks on a background with the YUV color 82.1860, -2.0637, 8.6069.

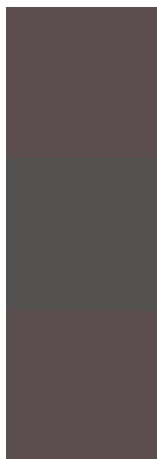


This preview shows how white text looks on a background with the YUV color 82.1860, -2.0637,

Color Blindness Simulation

Color vision deficiency is a very complex topic, and I could not describe the different causes any better than Wikipedia does, so if you want to learn more, you should check out their [article about color blindness](#).

Dichromacy



Original Color

82.1860, -2.0637, 8.6069

Protanopia

81.4840, -0.7316, 1.3295

Deuteranopia

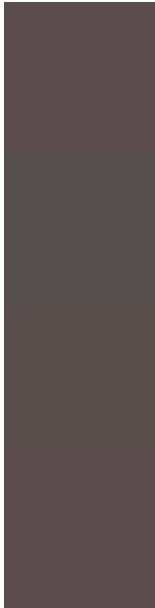
82.1750, -2.0583, 6.8625



Tritanopia

82.4680, 0.2623, 9.2366

Trichromacy



Original Color

82.1860, -2.0637, 8.6069

Protanomaly

81.6800, -1.3212, 3.7886

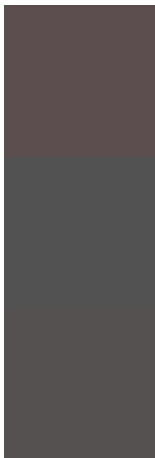
Deuteranomaly

82.4740, -2.2057, 7.4773

Tritanomaly

82.2400, -0.6113, 9.4365

Monochromacy



Original Color

82.1860, -2.0637, 8.6069

Achromatopsia

82.0000, 0.0000, 0.0000

Achromatomaly

82.4950, -0.7370, 3.0739

CSS Examples

Text

The CSS property to change the color of the text to YUV 82.1860, -2.0637, 8.6069 is called "color". The color property can be set on classes, ids or directly on the HTML element.

This example shows how text in the color `rgb(92, 78, 78)` looks like.

```
.text, #text, p{  
    color:rgb(92, 78, 78)  
}
```

If you want to add a text shadow in that color use the text-shadow property, you can generate a text shadow directly with our [CSS Text Shadow Generator](#).

Here you see how black text with a 4 pixel rgb(92, 78, 78) colored shadow looks like.

```
.shadow{ text-shadow: 4px 4px 2px rgb(92, 78, 78) }
```

Border

The CSS property to change the border of an element to YUV 82.1860, -2.0637, 8.6069 is called "border". The border property can be set on classes, ids or directly on the HTML element.

This example shows the color as border, it can be applied via the CSS property "border" or "border-color".

```
.border, #border, table{ border:4px solid rgb(92, 78, 78) }
```


If only the border color should be changed use the property `border-color`.

```
.border{ border-color:rgb(92, 78, 78) }
```

If you want to add a box shadow in that color use:

Here you see how a box with a 4 pixel `rgb(92, 78, 78)` colored shadow looks like.

```
.boxshadow{ -moz-box-shadow:4px 4px 4px  
4px rgb(92, 78, 78); -webkit-box-  
shadow:4px 4px 4px 4px rgb(92, 78, 78);  
box-shadow:4px 4px 4px 4px rgb(92, 78, 78)  
}
```

Background

The CSS property to change the background color of an element to YUV 82.1860, -2.0637, 8.6069 is called "background". The background property can be set on classes, ids or directly on the HTML element.

```
.background, #background, body{  
background: rgb(92, 78, 78) }
```

If only the background color should be changed can be used:

```
.background{ background-color: rgb(92, 78,  
78) }
```

This example shows the color as background, it is applied via the CSS property "background".

To optimize and compress your CSS code, you can use our [online CSS compressor and optimizer](#) based on csstidy. If you want to create a linear or radial gradient as background or border, check our [CSS Gradient Generator](#).

Hey! You found this booklet interesting? Support Converting Colors with the new Membership Option!

The pro membership hides all ads, plus gives you double the colors in the color bucket, and more awesome pro features!

[Learn more, Memberships starting at \\$2.50/m!](#)

**Follow me
on Twitter!**

@ConvertingColor