

Converting Colors

YUV(82.8170, -2.3748, 15.0695)

Have a look what the booklet for
YUV(82.8170, -2.3748, 15.0695)
contains.

YUV(82.8170, -2.3748, 15.0695)	3
<i>Conversions</i>	4
<i>Details</i>	6
<i>Harmonies</i>	12
<i>Previews</i>	24
<i>Color Blindness Simulation</i>	28
<i>CSS Examples</i>	31

Color

**YUV(82.8170, -2.3748,
15.0695)**

Conversions

Conversions Part 1

Format	Color
Hex	644B4E
RGB	100, 75, 78
RGB Percent	39%, 29%, 31%
CMY	0.6078, 0.7059, 0.6941
CMYK	0.00, 0.25, 0.22, 0.61
HSL	353°, 14%, 34%
HSV	353°, 25%, 39%
XYZ	9.1468, 8.2915, 8.3261
YIQ	82.8170, 13.9370, 6.2330

Conversions

Conversions Part 2

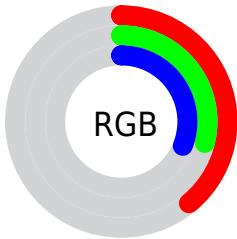
Format	Color
R_{YB}	100, 75, 78
Decimal	6572878
CIE Lab	34.58, 11.10, 2.32
CIE LCh	35, 11.340, 11.815
Yxy	8.2915, 0.3550, 0.3218
Android (android.graphics.Color)	4284762958 (0xFF644B4E)
YUV	82.8170, -2.3748, 15.0695
Hunter-Lab	28.7950, 6.3093, 3.0128

Details

The YUV color **82.8170, -2.3748, 15.0695** is a dark color, and the websafe version is hex **666666**. A complement of this color would be **92.1830, 2.3748, -15.0695**, and the grayscale version is **83.0000, 0.0000, 0.0000**.

A 20% lighter version of the original color is **132.4150, -2.6696, 16.2990**, and **37.9200, -1.9326, 13.2252** is the 20% darker color. If you saturate the color by 10%, you get **75.9210, -3.4121, 21.1173**, and if you desaturate by 10%, it is **89.7130, -1.3375, 9.0217**.

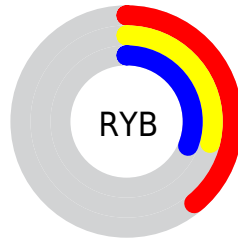
Distribution



Red (39%)

Green (29%)

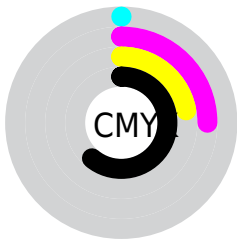
Blue (31%)



Red (39%)

Yellow (29%)

Blue (31%)

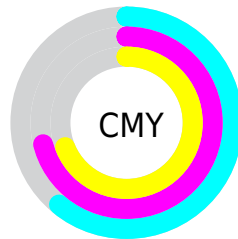


Cyan (0%)

Magenta (25%)

Yellow (22%)

Black (61%)



Cyan (61%)

Magenta (71%)

Yellow (69%)

Brightness & Saturation Gradients

These gradients show how the YUV color 82.8170, -2.3748, 15.0695 changes by changing the brightness by 10 percent. The first figure shows a shift by +10% for each color and the second figure -10%.

Similar to the brightness gradients but the following saturation gradients show a change of the YUV color 82.8170, -2.3748, 15.0695 by changing the saturation by 10% instead.

82.8170, -2.3748,
15.0695

82.8170, -2.3748,
15.0695

255.0000, 0.0000,
0.0000

59.5180, -2.2274,
14.4547

132.4150, -2.6696,
16.2990

37.9200, -1.9326,
13.2252

158.7140, -2.8170,
16.9138

15.5180, -2.2274,
14.4547

185.4260, -2.6750,
18.0434

0.0000, 0.0000,
0.0000

213.3120, -3.1118,
18.1434

239.2190, -2.0800,
13.8399

■ 82.8170, -2.3748,
15.0695

■ 82.8170, -2.3748,
15.0695

■ 75.9210, -3.4121,
21.1173

■ 89.7130, -1.3375,
9.0217

■ 69.0250, -4.4493,
27.1651

■ 96.6090, -0.3002,
2.9739

■ 62.2430, -5.0498,
33.1129

■ 103.3910, 0.3002,
-2.9739

■ 55.3470, -6.0871,
39.1607

■ 110.2870, 1.3375,
-9.0217

■ 48.4510, -7.1243,
45.2085

■ 117.1830, 2.3748,
-15.0695

■ 41.5550, -8.1616,
51.2563

■ 124.0790, 3.4121,
-21.1173

■ 34.6590, -9.1989,
57.3041

■ 130.9750, 4.4493,
-27.1651

■ 31.2680, -9.4991,

■ 137.7570, 5.0498,

60.2780

-33.1129

■ 144.6530, 6.0871,
-39.1607

Harmonies

Analogous

The Analogous color harmony consists of three colors that are next to each other on the color wheel.



83.2340, 1.8566, 11.1958



82.8170, -2.3748, 15.0695



82.1930, -6.0111, 14.7397

Triad

The Triadic color harmony groups three colors that are evenly spaced from another and form a triangle on the color wheel.



82.8170, -2.3748, 15.0695



79.1860, -5.5147, -4.5481



79.6160, 9.0633, -13.6952

Complementary

The Complementary color scheme is a pair of colors which are on the opposite of each other on the color wheel.



82.8170, -2.3748, 15.0695



92.1830, 2.3748, -15.0695

Split Complementary

Split-complementary colors differ from the complementary color scheme. The scheme consists of three colors, the original color and two neighbors of the complement color.



78.1270, 7.3324, -18.5284



82.8170, -2.3748, 15.0695



78.4670, -1.7092, -11.8106

Square

The Square scheme is like the rectangle color scheme, but the four colors are evenly spaced on the color wheel.



82.8170, -2.3748, 15.0695



80.8450, -8.3046, 3.6439



78.1010, 3.4012, -17.6286



81.5570, 8.5994, -4.8735

Rectangle

The Rectangle color scheme consists of four colors that form a rectangle on the color wheel.



82.8170, -2.3748, 15.0695



82.0140, -7.8949, 12.2657



78.1010, 3.4012, -17.6286



79.1920, 8.7793, -15.9544

Sweetspot

The Sweet Spot groups the original color and five complimentary colors.



82.8170, -2.3748, 15.0695



123.1040, -1.0373, 6.0478



84.4280, 7.6770, 11.0256



61.7940, -0.8844, 3.6887



194.0000, 0.0000, 0.0000



66.0000, 0.0000, 0.0000

Same Dimension

The Same Dimension uses a secret algorithm to generate beautiful new colors.



82.8170, -2.3748, 15.0695



103.2310, -3.5649, 23.4764



87.7580, -6.2897, 10.7362



47.6090, -0.3002, 2.9739



35.9810, -10.8366, 69.2997



75.6640, -23.0054, 145.8767

Inverse Universe

The Inverse Universe completely reimagines the original color for something new.



82.8170, -2.3748, 15.0695



103.2310, -3.5649, 23.4764



87.2420, 6.2897, -10.7362



47.6090, -0.3002, 2.9739



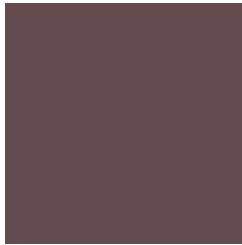
35.9810, -10.8366, 69.2997



75.6640, -23.0054, 145.8767

Previews

White Background



This preview shows how the YUV color 82.8170, -2.3748, 15.0695 looks on a white background.

Color Contrast Check

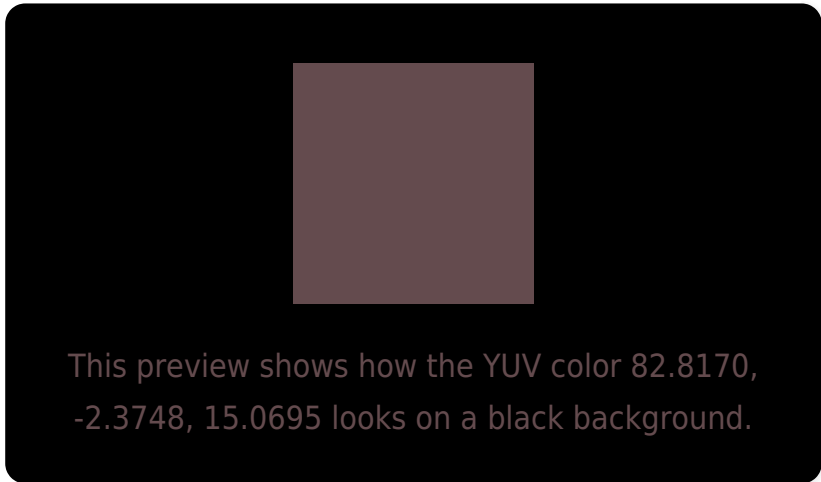
Large Text (above 18pt) WCAG AA ✓ Pass

Any Text WCAG AA ✓ Pass

Large Text (above 18pt) WCAG AAA ✓ Pass

Any Text WCAG AAA ✓ Pass

Black Background



Color Contrast Check

Large Text (above 18pt) WCAG AA × Fail

Any Text WCAG AA × Fail

Large Text (above 18pt) WCAG AAA × Fail

Any Text WCAG AAA × Fail

If you want to check with other color combinations, try the [Color Contrast Checker](#).

YUV 82.8170, -2.3748, 15.0695

Background



This preview shows how black text looks on a background with the YUV color 82.8170, -2.3748, 15.0695.

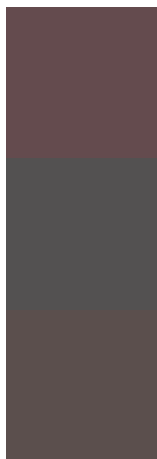


This preview shows how white text looks on a background with the YUV color 82.8170, -2.3748,

Color Blindness Simulation

Color vision deficiency is a very complex topic, and I could not describe the different causes any better than Wikipedia does, so if you want to learn more, you should check out their [article about color blindness](#).

Dichromacy



Original Color

82.8170, -2.3748, 15.0695

Protanopia

81.5980, -0.2948, 1.2296

Deuteranopia

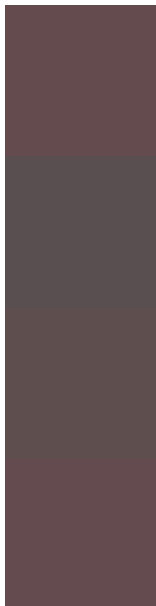
82.3600, -2.6425, 7.5773



Tritanopia

83.0450, -1.5012, 14.8695

Trichromacy



Original Color

82.8170, -2.3748, 15.0695

Protanomaly

82.1040, -1.0373, 6.0478

Deuteranomaly

82.6700, -2.7953, 9.9364

Tritanomaly

82.9310, -1.9380, 14.9695

Monochromacy



Original Color

82.8170, -2.3748, 15.0695

Achromatopsia

83.0000, 0.0000, 0.0000

Achromatomaly

82.8050, -0.8899, 5.4330

CSS Examples

Text

The CSS property to change the color of the text to YUV 82.8170, -2.3748, 15.0695 is called "color". The color property can be set on classes, ids or directly on the HTML element.

This example shows how text in the color `rgb(100, 75, 78)` looks like.

```
.text, #text, p{  
    color:rgb(100, 75, 78)  
}
```

If you want to add a text shadow in that color use the text-shadow property, you can generate a text shadow directly with our [CSS Text Shadow Generator](#).

Here you see how black text with a 4 pixel rgb(100, 75, 78) colored shadow looks like.

```
.shadow{ text-shadow: 4px 4px 2px rgb(100, 75, 78) }
```

Border

The CSS property to change the border of an element to YUV 82.8170, -2.3748, 15.0695 is called "border". The border property can be set on classes, ids or directly on the HTML element.

This example shows the color as border, it can be applied via the CSS property "border" or "border-color".

```
.border, #border, table{ border:4px solid rgb(100, 75, 78) }
```


If only the border color should be changed use the property `border-color`.

```
.border{ border-color:rgb(100, 75, 78) }
```

If you want to add a box shadow in that color use:

Here you see how a box with a 4 pixel `rgb(100, 75, 78)` colored shadow looks like.

```
.boxshadow{ -moz-box-shadow:4px 4px 4px  
4px rgb(100, 75, 78); -webkit-box-  
shadow:4px 4px 4px 4px rgb(100, 75, 78);  
box-shadow:4px 4px 4px 4px rgb(100, 75,  
78) }
```

Background

The CSS property to change the background color of an element to YUV 82.8170, -2.3748, 15.0695 is called "background". The background property can be set on classes, ids or directly on the HTML element.

```
.background, #background, body{  
background: rgb(100, 75, 78) }
```

If only the background color should be changed can be used:

```
.background{ background-color: rgb(100, 75,  
78) }
```

This example shows the color as background, it is applied via the CSS property "background".

To optimize and compress your CSS code, you can use our [online CSS compressor and optimizer](#) based on csstidy. If you want to create a linear or radial gradient as background or border, check our [CSS Gradient Generator](#).

Hey! You found this booklet interesting? Support Converting Colors with the new Membership Option!

The pro membership hides all ads, plus gives you double the colors in the color bucket, and more awesome pro features!

[Learn more, Memberships starting at \\$2.50/m!](#)

**Follow me
on Twitter!**

@ConvertingColor