

Converting Colors

YUV(82.9040, -0.9387, 21.1322)

Have a look what the booklet for
YUV(82.9040, -0.9387, 21.1322)
contains.

YUV(82.9040, -0.9387, 21.1322)	3
<i>Conversions</i>	4
<i>Details</i>	6
<i>Harmonies</i>	12
<i>Previews</i>	24
<i>Color Blindness Simulation</i>	28
<i>CSS Examples</i>	31

Color

**YUV(82.9040, -0.9387,
21.1322)**

Conversions

Conversions Part 1

Format	Color
Hex	6B4751
RGB	107, 71, 81
RGB Percent	42%, 28%, 32%
CMY	0.5804, 0.7216, 0.6824
CMYK	0.00, 0.34, 0.24, 0.58
HSL	343°, 20%, 35%
HSV	343°, 34%, 42%
XYZ	9.8018, 8.2264, 8.8558
YIQ	82.9040, 18.2460, 10.7420

Conversions

Conversions Part 2

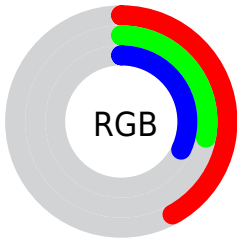
Format	Color
RYB	107, 71, 81
Decimal	7030609
CIELab	34.45, 17.02, 0.33
CIElCh	34, 17.020, 1.108
Yxy	8.2264, 0.3646, 0.3060
Android (android.graphics.Color)	4285220689 (0xFF6B4751)
YUV	82.9040, -0.9387, 21.1322
Hunter-Lab	28.6816, 10.8089, 1.7706

Details

The YUV color **82.9040, -0.9387, 21.1322** is a dark color, and the websafe version is hex **663333**. A complement of this color would be **95.0960, 0.9387, -21.1322**, and the grayscale version is **83.0000, 0.0000, 0.0000**.

A 20% lighter version of the original color is **132.8010, -1.3809, 22.9765**, and **37.4090, -0.2016, 18.0583** is the 20% darker color. If you saturate the color by 10%, you get **75.5350, -1.2498, 27.5948**, and if you desaturate by 10%, it is **90.2730, -0.6276, 14.6696**.

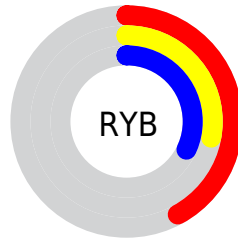
Distribution



 Red (42%)

 Green (28%)

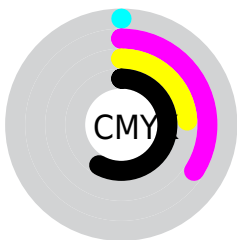
 Blue (32%)



 Red (42%)

 Yellow (28%)

 Blue (32%)

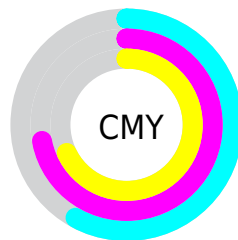


 Cyan (0%)

 Magenta (34%)

 Yellow (24%)

 Black (58%)



 Cyan (58%)

 Magenta (72%)

 Yellow (68%)

Brightness & Saturation Gradients

These gradients show how the YUV color 82.9040, -0.9387, 21.1322 changes by changing the brightness by 10 percent. The first figure shows a shift by +10% for each color and the second figure -10%.

Similar to the brightness gradients but the following saturation gradients show a change of the YUV color 82.9040, -0.9387, 21.1322 by changing the saturation by 10% instead.

82.9040, -0.9387,
21.1322

82.9040, -0.9387,
21.1322

255.0000, 0.0000,
0.0000

59.3060, -0.6439,
19.9026

132.8010, -1.3809,
22.9765

37.4090, -0.2016,
18.0583

159.1000, -1.5283,
23.5913

14.5340, 0.2297,
19.7027

185.8120, -1.3863,
24.7209

0.0000, 0.0000,
0.0000

214.1110, -1.5337,
25.3357

237.3270, 0.8248,
15.4992

82.9040, -0.9387,
21.1322

82.9040, -0.9387,
21.1322

75.5350, -1.2498,
27.5948

90.2730, -0.6276,
14.6696

68.8670, -1.4134,
33.4426

96.9410, -0.4639,
8.8217

61.4980, -1.7245,
39.9053

104.3100, -0.1528,
2.3591

54.1290, -2.0356,
46.3679

111.6790, 0.1583,
-4.1035

46.7600, -2.3467,
52.8305

119.0480, 0.4693,
-10.5661

40.0920, -2.5104,
58.6783

125.7160, 0.6330,
-16.4139

35.4130, -2.6686,
62.7818

133.0850, 0.9441,
-22.8765

140.4540, 1.2552,

-29.3392

■ 147.2360, 1.8557,
-35.2870

Harmonies

Analogous

The Analogous color harmony consists of three colors that are next to each other on the color wheel.



83.1680, 5.3402, 13.8847



82.9040, -0.9387, 21.1322



82.3080, -7.0538, 22.5319

Triad

The Triadic color harmony groups three colors that are evenly spaced from another and form a triangle on the color wheel.



82.9040, -0.9387, 21.1322



78.6440, -10.1775, -2.3188



76.0920, 13.7586, -26.3907

Complementary

The Complementary color scheme is a pair of colors which are on the opposite of each other on the color wheel.



82.9040, -0.9387, 21.1322



95.0960, 0.9387, -21.1322

Split Complementary

Split-complementary colors differ from the complementary color scheme. The scheme consists of three colors, the original color and two neighbors of the complement color.



73.7340, 9.9911, -31.3387



82.9040, -0.9387, 21.1322



76.7610, -4.3192, -14.6994

Square

The Square scheme is like the rectangle color scheme, but the four colors are evenly spaced on the color wheel.



82.9040, -0.9387, 21.1322



80.0260, -12.8308, 8.7472



75.2310, 2.8441, -25.6356



79.5820, 14.0101, -13.6654

Rectangle

The Rectangle color scheme consists of four colors that form a rectangle on the color wheel.



82.9040, -0.9387, 21.1322



81.3740, -10.5374, 19.8430



75.2310, 2.8441, -25.6356



75.2550, 13.1853, -29.1646

Sweetspot

The Sweet Spot groups the original color and five complimentary colors.



82.9040, -0.9387, 21.1322



130.6420, -0.3165, 8.2070



82.8780, 11.8921, 12.3850



65.6200, -0.3057, 4.7183



199.0000, 0.0000, 0.0000



71.0000, 0.0000, 0.0000

Same Dimension

The Same Dimension uses a secret algorithm to generate beautiful new colors.



82.9040, -0.9387, 21.1322



102.5680, -1.2660, 32.8279



86.4600, -7.6218, 18.0136



50.0220, -0.0108, 3.4887



38.7450, -2.8323, 68.6296



81.0070, -6.4125, 143.8219

Inverse Universe

The Inverse Universe completely reimagines the original color for something new.



82.9040, -0.9387, 21.1322



102.5680, -1.2660, 32.8279



91.5400, 7.6218, -18.0136



50.0220, -0.0108, 3.4887



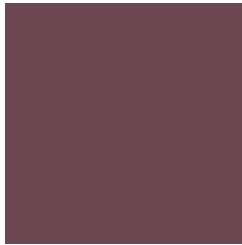
38.7450, -2.8323, 68.6296



81.0070, -6.4125, 143.8219

Previews

White Background



This preview shows how the YUV color 82.9040, -0.9387, 21.1322 looks on a white background.

Color Contrast Check

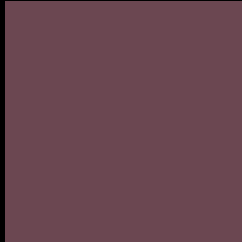
Large Text (above 18pt) WCAG AA ✓ Pass

Any Text WCAG AA ✓ Pass

Large Text (above 18pt) WCAG AAA ✓ Pass

Any Text WCAG AAA ✓ Pass

Black Background



This preview shows how the YUV color 82.9040, -0.9387, 21.1322 looks on a black background.

Color Contrast Check

Large Text (above 18pt) WCAG AA × Fail

Any Text WCAG AA × Fail

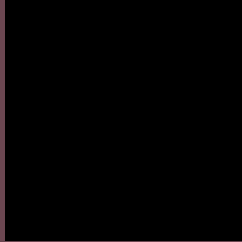
Large Text (above 18pt) WCAG AAA × Fail

Any Text WCAG AAA × Fail

If you want to check with other color combinations, try the [Color Contrast Checker](#).

YUV 82.9040, -0.9387, 21.1322

Background



This preview shows how black text looks on a background with the YUV color 82.9040, -0.9387, 21.1322.



This preview shows how white text looks on a background with the YUV color 82.9040, -0.9387,

Color Blindness Simulation

Color vision deficiency is a very complex topic, and I could not describe the different causes any better than Wikipedia does, so if you want to learn more, you should check out their [article about color blindness](#).

Dichromacy



Original Color

82.9040, -0.9387, 21.1322

Protanopia

81.6840, 2.6208, -0.5999

Deuteranopia

82.4030, -1.1847, 6.6626



Tritanopia

83.0350, -2.9753, 21.0173

Trichromacy



Original Color

82.9040, -0.9387, 21.1322

Protanomaly

81.7990, 1.5781, 7.1923

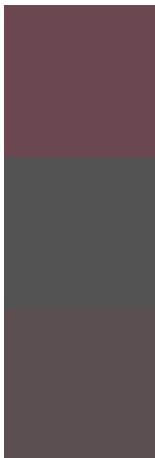
Deuteranomaly

82.4360, -1.2009, 11.8956

Tritanomaly

83.1490, -2.5385, 20.9173

Monochromacy



Original Color

82.9040, -0.9387, 21.1322

Achromatopsia

83.0000, 0.0000, 0.0000

Achromatomaly

83.2290, -0.6059, 7.6922

CSS Examples

Text

The CSS property to change the color of the text to YUV 82.9040, -0.9387, 21.1322 is called "color". The color property can be set on classes, ids or directly on the HTML element.

This example shows how text in the color `rgb(107, 71, 81)` looks like.

```
.text, #text, p{  
    color:rgb(107, 71, 81)  
}
```

If you want to add a text shadow in that color use the text-shadow property, you can generate a text shadow directly with our [CSS Text Shadow Generator](#).

Here you see how black text with a 4 pixel rgb(107, 71, 81) colored shadow looks like.

```
.shadow{ text-shadow: 4px 4px 2px rgb(107, 71, 81) }
```

Border

The CSS property to change the border of an element to YUV 82.9040, -0.9387, 21.1322 is called "border". The border property can be set on classes, ids or directly on the HTML element.

This example shows the color as border, it can be applied via the CSS property "border" or "border-color".

```
.border, #border, table{ border:4px solid rgb(107, 71, 81) }
```


If only the border color should be changed use the property `border-color`.

```
.border{ border-color:rgb(107, 71, 81) }
```

If you want to add a box shadow in that color use:

Here you see how a box with a 4 pixel `rgb(107, 71, 81)` colored shadow looks like.

```
.boxshadow{ -moz-box-shadow:4px 4px 4px  
4px rgb(107, 71, 81); -webkit-box-  
shadow:4px 4px 4px 4px rgb(107, 71, 81);  
box-shadow:4px 4px 4px 4px rgb(107, 71,  
81) }
```

Background

The CSS property to change the background color of an element to YUV 82.9040, -0.9387, 21.1322 is called "background". The background property can be set on classes, ids or directly on the HTML element.

```
.background, #background, body{  
background: rgb(107, 71, 81) }
```

If only the background color should be changed can be used:

```
.background{ background-color: rgb(107, 71,  
81) }
```

This example shows the color as background, it is applied via the CSS property "background".

To optimize and compress your CSS code, you can use our [online CSS compressor and optimizer](#) based on csstidy. If you want to create a linear or radial gradient as background or border, check our [CSS Gradient Generator](#).

Hey! You found this booklet interesting? Support Converting Colors with the new Membership Option!

The pro membership hides all ads, plus gives you double the colors in the color bucket, and more awesome pro features!

[Learn more, Memberships starting at \\$2.50/m!](#)

**Follow me
on Twitter!**

@ConvertingColor