

Converting Colors

YUV(83.3760, -0.1854, 12.8252)

Have a look what the booklet for
YUV(83.3760, -0.1854, 12.8252)
contains.

YUV(83.3760, -0.1854, 12.8252)	3
<i>Conversions</i>	4
<i>Details</i>	6
<i>Harmonies</i>	12
<i>Previews</i>	24
<i>Color Blindness Simulation</i>	28
<i>CSS Examples</i>	31

Color

**YUV(83.3760, -0.1854,
12.8252)**

Conversions

Conversions Part 1

Format	Color
Hex	624C53
RGB	98, 76, 83
RGB Percent	38%, 30%, 33%
CMY	0.6157, 0.7020, 0.6745
CMYK	0.00, 0.22, 0.15, 0.62
HSL	341°, 13%, 34%
HSV	341°, 22%, 38%
XYZ	9.1828, 8.3901, 9.3191
YIQ	83.3760, 10.8650, 6.8410

Conversions

Conversions Part 2

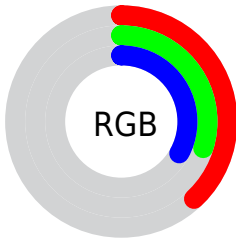
Format	Color
R_{YB}	98, 76, 83
Decimal	6442067
CIE Lab	34.78, 10.54, -0.58
CIE LCh	35, 10.555, 356.834
Yxy	8.3901, 0.3415, 0.3120
Android (android.graphics.Color)	4284632147 (0xFF624C53)
YUV	83.3760, -0.1854, 12.8252
Hunter-Lab	28.9656, 5.8987, 1.2007

Details

The YUV color **83.3760, -0.1854, 12.8252** is a dark color, and the websafe version is hex **666666**. A complement of this color would be **90.6240, 0.1854, -12.8252**, and the grayscale version is **83.0000, 0.0000, 0.0000**.

A 20% lighter version of the original color is **132.9740, -0.4802, 14.0548**, and **38.3650, -0.1799, 11.0809** is the 20% darker color. If you saturate the color by 10%, you get **76.7080, -0.3490, 18.6731**, and if you desaturate by 10%, it is **90.0440, -0.0217, 6.9774**.

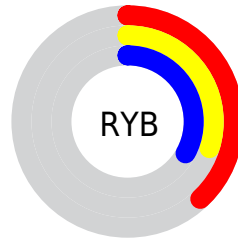
Distribution



 Red (38%)

 Green (30%)

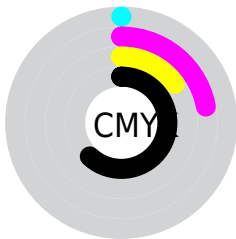
 Blue (33%)



 Red (38%)

 Yellow (30%)

 Blue (33%)

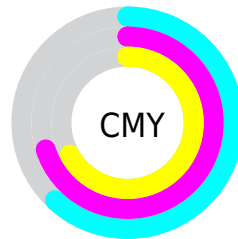


 Cyan (0%)

 Magenta (22%)

 Yellow (15%)

 Black (62%)



 Cyan (62%)

 Magenta (70%)

 Yellow (67%)

Brightness & Saturation Gradients

These gradients show how the YUV color 83.3760, -0.1854, 12.8252 changes by changing the brightness by 10 percent. The first figure shows a shift by +10% for each color and the second figure -10%.

Similar to the brightness gradients but the following saturation gradients show a change of the YUV color 83.3760, -0.1854, 12.8252 by changing the saturation by 10% instead.

■ 83.3760, -0.1854,
12.8252

■ 83.3760, -0.1854,
12.8252

■ 255.0000, 0.0000,
0.0000

■ 60.0770, -0.0380,
12.2105

■ 132.9740, -0.4802,
14.0548

■ 38.3650, -0.1799,
11.0809

■ 159.2730, -0.6276,
14.6696

■ 16.6040, 0.6882,
12.6253

■ 186.2730, -0.6276,
14.6696

■ 0.0000, 0.0000,
0.0000

■ 213.6860, -0.3382,
15.1844

■ 240.4900, 0.2514,
12.7253

■ 83.3760, -0.1854,
12.8252

■ 83.3760, -0.1854,
12.8252

■ 76.7080, -0.3490,
18.6731

■ 90.0440, -0.0217,
6.9774

■ 70.1540, -0.0759,
24.4209

■ 96.5980, -0.2948,
1.2296

■ 64.0730, -0.5290,
29.7540

■ 102.6790, 0.1583,
-4.1035

■ 57.4050, -0.6927,
35.6018

■ 109.3470, 0.3219,
-9.9513

■ 50.8510, -0.4195,
41.3497

■ 115.9010, 0.0488,
-15.6992

■ 44.1830, -0.5832,
47.1975

■ 122.5690, 0.2125,
-21.5470

■ 37.5150, -0.7469,
53.0453

■ 129.2370, 0.3762,
-27.3948

■ 32.8360, -0.9051,

■ 135.2040, 0.3924,

57.1488

-32.6279

■ 141.8720, 0.5561,
-38.4757

Harmonies

Analogous

The Analogous color harmony consists of three colors that are next to each other on the color wheel.



83.0810, 3.9041, 7.8220



83.3760, -0.1854, 12.8252



82.7630, -3.8272, 14.2398

Triad

The Triadic color harmony groups three colors that are evenly spaced from another and form a triangle on the color wheel.



83.3760, -0.1854, 12.8252



80.8660, -6.8359, -0.7595



79.3770, 8.1951, -15.2396

Complementary

The Complementary color scheme is a pair of colors which are on the opposite of each other on the color wheel.



83.3760, -0.1854, 12.8252



90.6240, 0.1854, -12.8252

Split Complementary

Split-complementary colors differ from the complementary color scheme. The scheme consists of three colors, the original color and two neighbors of the complement color.



78.2690, 5.2904, -16.8989



83.3760, -0.1854, 12.8252



79.9190, -3.9041, -7.8220

Square

The Square scheme is like the rectangle color scheme, but the four colors are evenly spaced on the color wheel.



83.3760, -0.1854, 12.8252



81.5680, -8.1680, 6.5179



79.1400, 0.9170, -14.1548



81.1220, 8.3209, -8.8770

Rectangle

The Rectangle color scheme consists of four colors that form a rectangle on the color wheel.



83.3760, -0.1854, 12.8252



82.4810, -6.1531, 13.6102



79.1400, 0.9170, -14.1548



79.4370, 7.1796, -16.1692

Sweetspot

The Sweet Spot groups the original color and five complimentary colors.



83.3760, -0.1854, 12.8252



121.9190, -0.4531, 5.3330



82.9930, 7.3985, 7.0221



60.6090, -0.3002, 2.9739



191.0000, 0.0000, 0.0000



64.0000, 0.0000, 0.0000

Same Dimension

The Same Dimension uses a secret algorithm to generate beautiful new colors.



83.3760, -0.1854, 12.8252



104.7190, -0.3545, 20.4174



84.9260, -4.4005, 11.4659



45.3100, -0.1528, 2.3591



37.5920, -0.7849, 65.2558



80.4240, -2.1810, 139.9482

Inverse Universe

The Inverse Universe completely reimagines the original color for something new.



83.3760, -0.1854, 12.8252



104.7190, -0.3545, 20.4174



89.0740, 4.4005, -11.4659



45.3100, -0.1528, 2.3591



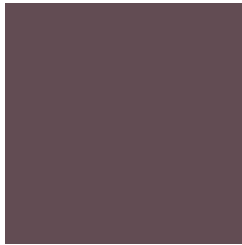
37.5920, -0.7849, 65.2558



80.4240, -2.1810, 139.9482

Previews

White Background



This preview shows how the YUV color 83.3760, -0.1854, 12.8252 looks on a white background.

Color Contrast Check

Large Text (above 18pt) WCAG AA ✓ Pass

Any Text WCAG AA ✓ Pass

Large Text (above 18pt) WCAG AAA ✓ Pass

Any Text WCAG AAA ✓ Pass

Black Background



This preview shows how the YUV color 83.3760, -0.1854, 12.8252 looks on a black background.

Color Contrast Check

Large Text (above 18pt) WCAG AA × Fail

Any Text WCAG AA × Fail

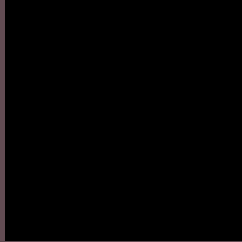
Large Text (above 18pt) WCAG AAA × Fail

Any Text WCAG AAA × Fail

If you want to check with other color combinations, try the [Color Contrast Checker](#).

YUV 83.3760, -0.1854, 12.8252

Background



This preview shows how black text looks on a background with the YUV color 83.3760, -0.1854, 12.8252.



This preview shows how white text looks on a background with the YUV color 83.3760, -0.1854,

Color Blindness Simulation

Color vision deficiency is a very complex topic, and I could not describe the different causes any better than Wikipedia does, so if you want to learn more, you should check out their [article about color blindness](#).

Dichromacy



Original Color

83.3760, -0.1854, 12.8252

Protanopia

81.8690, 2.0366, 0.1149

Deuteranopia

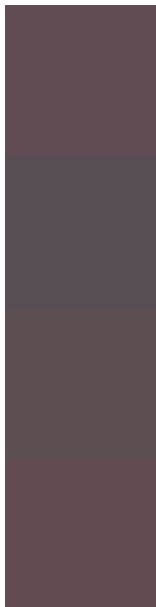
82.6310, -0.3111, 6.4626



Tritanopia

83.2620, -0.6222, 12.9252

Trichromacy



Original Color

83.3760, -0.1854, 12.8252

Protanomaly

82.3750, 1.2941, 4.9331

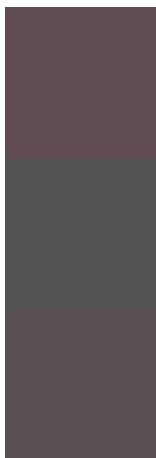
Deuteranomaly

82.9410, -0.4639, 8.8217

Tritanomaly

83.2620, -0.6222, 12.9252

Monochromacy



Original Color

83.3760, -0.1854, 12.8252

Achromatopsia

83.0000, 0.0000, 0.0000

Achromatomaly

82.7340, 0.1311, 4.6183

CSS Examples

Text

The CSS property to change the color of the text to YUV 83.3760, -0.1854, 12.8252 is called "color". The color property can be set on classes, ids or directly on the HTML element.

This example shows how text in the color `rgb(98, 76, 83)` looks like.

```
.text, #text, p{  
    color:rgb(98, 76, 83)  
}
```

If you want to add a text shadow in that color use the text-shadow property, you can generate a text shadow directly with our [CSS Text Shadow Generator](#).

Here you see how black text with a 4 pixel rgb(98, 76, 83) colored shadow looks like.

```
.shadow{ text-shadow: 4px 4px 2px rgb(98, 76, 83) }
```

Border

The CSS property to change the border of an element to YUV 83.3760, -0.1854, 12.8252 is called "border". The border property can be set on classes, ids or directly on the HTML element.

This example shows the color as border, it can be applied via the CSS property "border" or "border-color".

```
.border, #border, table{ border:4px solid rgb(98, 76, 83) }
```


If only the border color should be changed use the property `border-color`.

```
.border{ border-color:rgb(98, 76, 83) }
```

If you want to add a box shadow in that color use:

Here you see how a box with a 4 pixel `rgb(98, 76, 83)` colored shadow looks like.

```
.boxshadow{ -moz-box-shadow:4px 4px 4px  
4px rgb(98, 76, 83); -webkit-box-  
shadow:4px 4px 4px 4px rgb(98, 76, 83);  
box-shadow:4px 4px 4px 4px rgb(98, 76, 83)  
}
```

Background

The CSS property to change the background color of an element to YUV 83.3760, -0.1854, 12.8252 is called "background". The background property can be set on classes, ids or directly on the HTML element.

```
.background, #background, body{  
background: rgb(98, 76, 83) }
```

If only the background color should be changed can be used:

```
.background{ background-color: rgb(98, 76,  
83) }
```

This example shows the color as background, it is applied via the CSS property "background".

To optimize and compress your CSS code, you can use our [online CSS compressor and optimizer](#) based on csstidy. If you want to create a linear or radial gradient as background or border, check our [CSS Gradient Generator](#).

Hey! You found this booklet interesting? Support Converting Colors with the new Membership Option!

The pro membership hides all ads, plus gives you double the colors in the color bucket, and more awesome pro features!

[Learn more, Memberships starting at \\$2.50/m!](#)

**Follow me
on Twitter!**

@ConvertingColor