

Converting Colors

YUV(83.8440, -3.3741, 8.9068)

Have a look what the booklet for
YUV(83.8440, -3.3741, 8.9068)
contains.

YUV(83.8440, -3.3741, 8.9068)	3
<i>Conversions</i>	4
<i>Details</i>	6
<i>Harmonies</i>	12
<i>Previews</i>	24
<i>Color Blindness Simulation</i>	28
<i>CSS Examples</i>	31

Color

**YUV(83.8440, -3.3741,
8.9068)**

Conversions

Conversions Part 1

Format	Color
Hex	5E504D
RGB	94, 80, 77
RGB Percent	37%, 31%, 30%
CMY	0.6314, 0.6863, 0.6980
CMYK	0.00, 0.15, 0.18, 0.63
HSL	11°, 10%, 34%
HSV	11°, 18%, 37%
XYZ	8.8243, 8.6528, 8.2262
YIQ	83.8440, 9.3070, 2.0350

Conversions

Conversions Part 2

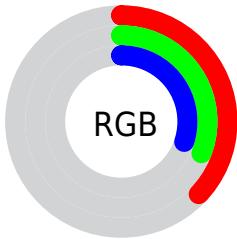
Format	Color
RYB	94, 81, 77
Decimal	6180941
CIELab	35.31, 5.25, 3.91
CIELCh	35, 6.549, 36.670
Yxy	8.6528, 0.3433, 0.3366
Android (android.graphics.Color)	4284371021 (0xFF5E504D)
YUV	83.8440, -3.3741, 8.9068
Hunter-Lab	29.4157, 2.0701, 4.0102

Details

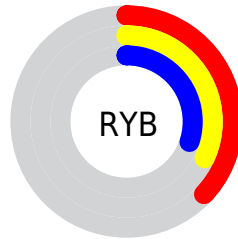
The YUV color **83.8440, -3.3741, 8.9068** is a dark color, and the websafe version is hex **666666**. A complement of this color would be **87.1560, 3.3741, -8.9068**, and the grayscale version is **84.0000, 0.0000, 0.0000**.

A 20% lighter version of the original color is **133.4420, -3.6689, 10.1364**, and **39.2460, -3.0793, 7.6773** is the 20% darker color. If you saturate the color by 10%, you get **78.1220, -4.9901, 13.9250**, and if you desaturate by 10%, it is **89.5660, -1.7580, 3.8886**.

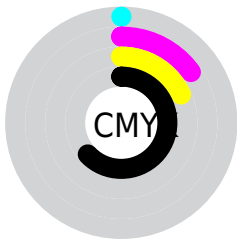
Distribution



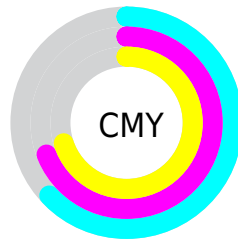
- Red (37%)
- Green (31%)
- Blue (30%)



- Red (37%)
- Yellow (32%)
- Blue (30%)



- Cyan (0%)
- Magenta (15%)
- Yellow (18%)
- Black (63%)



- Cyan (63%)
- Magenta (69%)
- Yellow (70%)

Brightness & Saturation Gradients

These gradients show how the YUV color 83.8440, -3.3741, 8.9068 changes by changing the brightness by 10 percent. The first figure shows a shift by +10% for each color and the second figure -10%.

Similar to the brightness gradients but the following saturation gradients show a change of the YUV color 83.8440, -3.3741, 8.9068 by changing the saturation by 10% instead.

■ 83.8440, -3.3741,
8.9068

■ 83.8440, -3.3741,
8.9068

■ 255.0000, 0.0000,
0.0000

■ 60.5450, -3.2267,
8.2920

■ 133.4420, -3.6689,
10.1364

■ 39.2460, -3.0793,
7.6773

■ 159.4420, -3.6689,
10.1364

■ 17.7300, -3.8109,
9.0068

■ 186.3280, -4.1057,
10.2363

■ 0.0000, 0.0000,
0.0000

■ 214.6270, -4.2531,
10.8511

■ 242.6270, -4.2531,
10.8511

■ 83.8440, -3.3741,
8.9068

■ 83.8440, -3.3741,
8.9068

■ 78.1220, -4.9901,
13.9250

■ 89.5660, -1.7580,
3.8886

■ 72.8730, -7.3324,
18.5284

■ 94.8150, 0.5842,
-0.7148

■ 67.1510, -8.9484,
23.5466

■ 100.5370, 2.2003,
-5.7329

■ 61.3150, -11.0013,
28.6647

■ 106.3730, 4.2531,
-10.8511

■ 55.5930, -12.6173,
33.6829

■ 112.0950, 5.8692,
-15.8693

■ 50.4580, -14.5228,
38.1863

■ 117.2300, 7.7746,
-20.3727

■ 44.6220, -16.5756,
43.3045

■ 123.0660, 9.8275,
-25.4909

■ 38.9000, -18.1917,

■ 128.7880, 11.4435,

48.3227

-30.5091

■ 38.0850, -18.7759,
49.0375

■ 134.6240, 13.4964,
-35.6272

Harmonies

Analogous

The Analogous color harmony consists of three colors that are next to each other on the color wheel.



83.8270, -0.9007, 8.9217



83.8440, -3.3741, 8.9068



83.1920, -4.5317, 6.8476

Triad

The Triadic color harmony groups three colors that are evenly spaced from another and form a triangle on the color wheel.



83.8440, -3.3741, 8.9068



81.6140, -1.2887, -6.6775



82.9440, 4.9576, -3.4589

Complementary

The Complementary color scheme is a pair of colors which are on the opposite of each other on the color wheel.



83.8440, -3.3741, 8.9068



87.1560, 3.3741, -8.9068

Split Complementary

Split-complementary colors differ from the complementary color scheme. The scheme consists of three colors, the original color and two neighbors of the complement color.



82.2100, 4.8265, -8.0772



83.8440, -3.3741, 8.9068



81.2870, 1.3375, -9.0217

Square

The Square scheme is like the rectangle color scheme, but the four colors are evenly spaced on the color wheel.



83.8440, -3.3741, 8.9068



82.3650, -3.6309, -2.0741



81.5580, 3.6689, -10.1364



83.6350, 3.6309, 2.0741

Rectangle

The Rectangle color scheme consists of four colors that form a rectangle on the color wheel.



83.8440, -3.3741, 8.9068



82.7680, -4.8156, 4.5885



81.5580, 3.6689, -10.1364



82.9330, 4.9630, -5.2032

Sweetspot

The Sweet Spot groups the original color and five complimentary colors.



83.8440, -3.3741, 8.9068



118.3810, -1.1738, 3.1739



83.6790, 3.6093, 9.0515



58.8970, -0.4422, 1.8443



189.0000, 0.0000, 0.0000



61.0000, 0.0000, 0.0000

Same Dimension

The Same Dimension uses a secret algorithm to generate beautiful new colors.



83.8440, -3.3741, 8.9068



106.0080, -5.4269, 14.0250



88.5400, -5.6892, 4.7884



43.0820, -1.0264, 2.5591



44.0430, -21.7132, 57.8443



95.5170, -47.0899, 124.0806

Inverse Universe

The Inverse Universe completely reimagines the original color for something new.



87.1560, 3.3741, -8.9068



111.5790, 5.1376, -14.5398



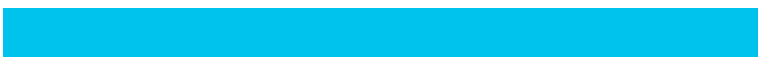
82.4600, 5.6892, -4.7884



43.9180, 1.0264, -2.5591



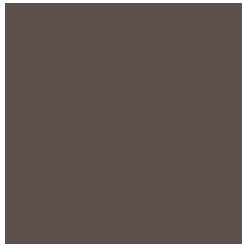
65.3700, 22.0026, -57.3295



141.4830, 47.0899, -124.0806

Previews

White Background



This preview shows how the YUV color 83.8440, -3.3741, 8.9068 looks on a white background.

Color Contrast Check

Large Text (above 18pt) WCAG AA ✓ Pass

Any Text WCAG AA ✓ Pass

Large Text (above 18pt) WCAG AAA ✓ Pass

Any Text WCAG AAA ✓ Pass

Black Background



This preview shows how the YUV color 83.8440, -3.3741, 8.9068 looks on a black background.

Color Contrast Check

Large Text (above 18pt) WCAG AA × Fail

Any Text WCAG AA × Fail

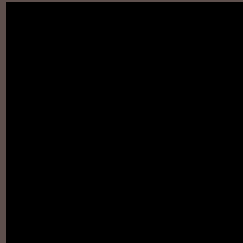
Large Text (above 18pt) WCAG AAA × Fail

Any Text WCAG AAA × Fail

If you want to check with other color combinations, try the [Color Contrast Checker](#).

YUV 83.8440, -3.3741, 8.9068

Background



This preview shows how black text looks on a background with the YUV color 83.8440, -3.3741, 8.9068.



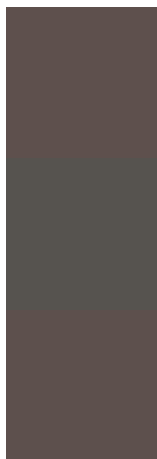
This preview shows how white text looks on a background with the YUV color 83.8440, -3.3741,

8.9068.

Color Blindness Simulation

Color vision deficiency is a very complex topic, and I could not describe the different causes any better than Wikipedia does, so if you want to learn more, you should check out their [article about color blindness](#).

Dichromacy



Original Color

83.8440, -3.3741, 8.9068

Protanopia

83.4410, -2.1894, 2.2442

Deuteranopia

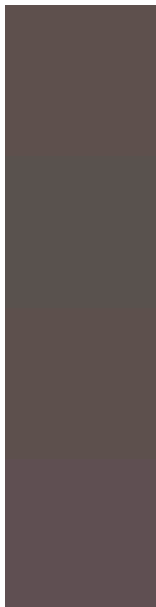
83.5450, -3.2267, 8.2920



Tritanopia

84.4680, 0.2623, 9.2366

Trichromacy



Original Color

83.8440, -3.3741, 8.9068

Protanomaly

83.6370, -2.7790, 4.7034

Deuteranomaly

83.5450, -3.2267, 8.2920

Tritanomaly

84.1260, -1.0481, 9.5365

Monochromacy



Original Color

83.8440, -3.3741, 8.9068

Achromatopsia

84.0000, 0.0000, 0.0000

Achromatomaly

84.2670, -1.6106, 3.2738

CSS Examples

Text

The CSS property to change the color of the text to YUV 83.8440, -3.3741, 8.9068 is called "color". The color property can be set on classes, ids or directly on the HTML element.

This example shows how text in the color `rgb(94, 80, 77)` looks like.

```
.text, #text, p{  
    color:rgb(94, 80, 77)  
}
```

If you want to add a text shadow in that color use the text-shadow property, you can generate a text shadow directly with our [CSS Text Shadow Generator](#).

Here you see how black text with a 4 pixel rgb(94, 80, 77) colored shadow looks like.

```
.shadow{ text-shadow: 4px 4px 2px rgb(94, 80, 77) }
```

Border

The CSS property to change the border of an element to YUV 83.8440, -3.3741, 8.9068 is called "border". The border property can be set on classes, ids or directly on the HTML element.

This example shows the color as border, it can be applied via the CSS property "border" or "border-color".

```
.border, #border, table{ border:4px solid rgb(94, 80, 77) }
```


If only the border color should be changed use the property `border-color`.

```
.border{ border-color:rgb(94, 80, 77) }
```

If you want to add a box shadow in that color use:

Here you see how a box with a 4 pixel `rgb(94, 80, 77)` colored shadow looks like.

```
.boxshadow{ -moz-box-shadow:4px 4px 4px  
4px rgb(94, 80, 77); -webkit-box-  
shadow:4px 4px 4px 4px rgb(94, 80, 77);  
box-shadow:4px 4px 4px 4px rgb(94, 80, 77)  
}
```

Background

The CSS property to change the background color of an element to YUV 83.8440, -3.3741, 8.9068 is called "background". The background property can be set on classes, ids or directly on the HTML element.

```
.background, #background, body{  
background: rgb(94, 80, 77) }
```

If only the background color should be changed can be used:

```
.background{ background-color: rgb(94, 80,  
77) }
```

This example shows the color as background, it is applied via the CSS property "background".

To optimize and compress your CSS code, you can use our [online CSS compressor and optimizer](#) based on csstidy. If you want to create a linear or radial gradient as background or border, check our [CSS Gradient Generator](#).

Hey! You found this booklet interesting? Support Converting Colors with the new Membership Option!

The pro membership hides all ads, plus gives you double the colors in the color bucket, and more awesome pro features!

[Learn more, Memberships starting at \\$2.50/m!](#)

**Follow me
on Twitter!**

@ConvertingColor