

Converting Colors

YUV(83.9810, -4.4276, 20.1877)

Have a look what the booklet for
YUV(83.9810, -4.4276, 20.1877)
contains.

YUV(83.9810, -4.4276, 20.1877)	3
<i>Conversions</i>	4
<i>Details</i>	6
<i>Harmonies</i>	12
<i>Previews</i>	24
<i>Color Blindness Simulation</i>	28
<i>CSS Examples</i>	31

Color

**YUV(83.9810, -4.4276,
20.1877)**

Conversions

Conversions Part 1

Format	Color
Hex	6B4A4B
RGB	107, 74, 75
RGB Percent	42%, 29%, 29%
CMY	0.5804, 0.7098, 0.7059
CMYK	0.00, 0.31, 0.30, 0.58
HSL	358°, 18%, 35%
HSV	358°, 31%, 42%
XYZ	9.7822, 8.5314, 7.7877
YIQ	83.9810, 19.3470, 7.3070

Conversions

Conversions Part 2

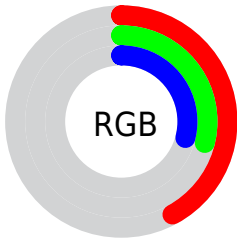
Format	Color
R_{YB}	107, 74, 75
Decimal	7031371
CIE _{Lab}	35.07, 14.20, 5.03
CIE _{LCh}	35, 15.067, 19.481
Yxy	8.5314, 0.3748, 0.3269
Android (android.graphics.Color)	4285221451 (0xFF6B4A4B)
YUV	83.9810, -4.4276, 20.1877
Hunter-Lab	29.2085, 8.6664, 4.6377

Details

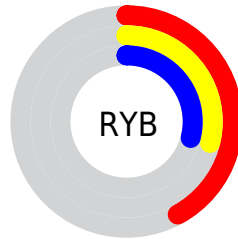
The YUV color **83.9810, -4.4276, 20.1877** is a dark color, and the websafe version is hex **663333**. A complement of this color would be **97.0190, 4.4276, -20.1877**, and the grayscale version is **84.0000, 0.0000, 0.0000**.

A 20% lighter version of the original color is **133.8780, -4.8699, 22.0320**, and **38.4860, -3.6906, 17.1138** is the 20% darker color. If you saturate the color by 10%, you get **76.3840, -5.6123, 26.8502**, and if you desaturate by 10%, it is **91.5780, -3.2430, 13.5251**.

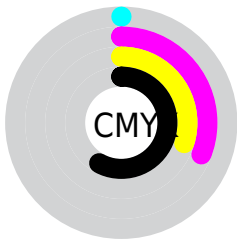
Distribution



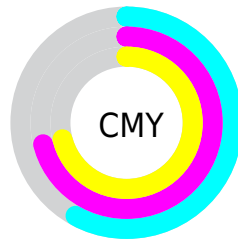
- Red (42%)
- Green (29%)
- Blue (29%)



- Red (42%)
- Yellow (29%)
- Blue (29%)



- Cyan (0%)
- Magenta (31%)
- Yellow (30%)
- Black (58%)



- Cyan (58%)
- Magenta (71%)
- Yellow (71%)

Brightness & Saturation Gradients

These gradients show how the YUV color 83.9810, -4.4276, 20.1877 changes by changing the brightness by 10 percent. The first figure shows a shift by +10% for each color and the second figure -10%.

Similar to the brightness gradients but the following saturation gradients show a change of the YUV color 83.9810, -4.4276, 20.1877 by changing the saturation by 10% instead.

83.9810, -4.4276,
20.1877

83.9810, -4.4276,
20.1877

255.0000, 0.0000,
0.0000

60.3830, -4.1328,
18.9581

133.8780, -4.8699,
22.0320

38.4860, -3.6906,
17.1138

160.3620, -5.6015,
23.3615

15.9700, -4.4222,
18.4433

187.3620, -5.6015,
23.3615

0.0000, 0.0000,
0.0000

215.0740, -5.4595,
24.4911

238.2900, -3.1010,
14.6547

■ 83.9810, -4.4276,
20.1877

■ 83.9810, -4.4276,
20.1877

■ 76.3840, -5.6123,
26.8502

■ 91.5780, -3.2430,
13.5251

■ 69.2600, -7.5232,
33.0980

■ 98.7020, -1.3321,
7.2773

■ 61.6630, -8.7079,
39.7605

■ 106.2990, -0.1474,
0.6148

■ 53.9520, -10.3293,
46.5231

■ 114.0100, 1.4741,
-6.1478

■ 46.3550, -11.5140,
53.1857

■ 121.6070, 2.6587,
-12.8103

■ 39.3450, -12.9881,
59.3334

■ 128.6170, 4.1328,
-18.9581

■ 32.3350, -14.4622,
65.4812

■ 136.3280, 5.7543,
-25.7207

■ 143.9250, 6.9390,

-32.3832

■ 150.9350, 8.4130,
-38.5310

Harmonies

Analogous

The Analogous color harmony consists of three colors that are next to each other on the color wheel.



84.4520, 1.2562, 17.1436



83.9810, -4.4276, 20.1877



83.1180, -8.9322, 18.3135

Triad

The Triadic color harmony groups three colors that are evenly spaced from another and form a triangle on the color wheel.



83.9810, -4.4276, 20.1877



79.3380, -6.0826, -9.0664



80.5170, 12.5631, -16.2394

Complementary

The Complementary color scheme is a pair of colors which are on the opposite of each other on the color wheel.



83.9810, -4.4276, 20.1877



97.0190, 4.4276, -20.1877

Split Complementary

Split-complementary colors differ from the complementary color scheme. The scheme consists of three colors, the original color and two neighbors of the complement color.



77.7070, 10.9904, -25.1760



83.9810, -4.4276, 20.1877



77.8790, 0.0597, -19.1879

Square

The Square scheme is like the rectangle color scheme, but the four colors are evenly spaced on the color wheel.



83.9810, -4.4276, 20.1877



80.9650, -10.3357, 1.7847



76.8550, 6.4805, -25.3058



83.1380, 10.7780, -3.6290

Rectangle

The Rectangle color scheme consists of four colors that form a rectangle on the color wheel.



83.9810, -4.4276, 20.1877



82.8140, -11.2473, 14.1951



76.8550, 6.4805, -25.3058



79.4950, 12.5740, -19.7281

Sweetspot

The Sweet Spot groups the original color and five complimentary colors.



83.9810, -4.4276, 20.1877



131.5880, -1.7689, 7.3773



87.3300, 9.6973, 16.3736



66.0930, -1.0318, 4.3034



199.0000, 0.0000, 0.0000



71.0000, 0.0000, 0.0000

Same Dimension

The Same Dimension uses a secret algorithm to generate beautiful new colors.



83.9810, -4.4276, 20.1877



103.7760, -6.7916, 31.7684



92.6720, -9.2053, 12.5657



49.7940, -0.8844, 3.6887



35.4390, -15.4994, 71.5290



74.0530, -33.0571, 149.9205

Inverse Universe

The Inverse Universe completely reimagines the original color for something new.



83.9810, -4.4276, 20.1877



103.7760, -6.7916, 31.7684



88.3280, 9.2053, -12.5657



49.7940, -0.8844, 3.6887



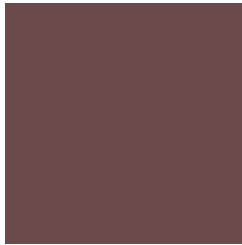
35.4390, -15.4994, 71.5290



74.0530, -33.0571, 149.9205

Previews

White Background



This preview shows how the YUV color 83.9810, -4.4276, 20.1877 looks on a white background.

Color Contrast Check

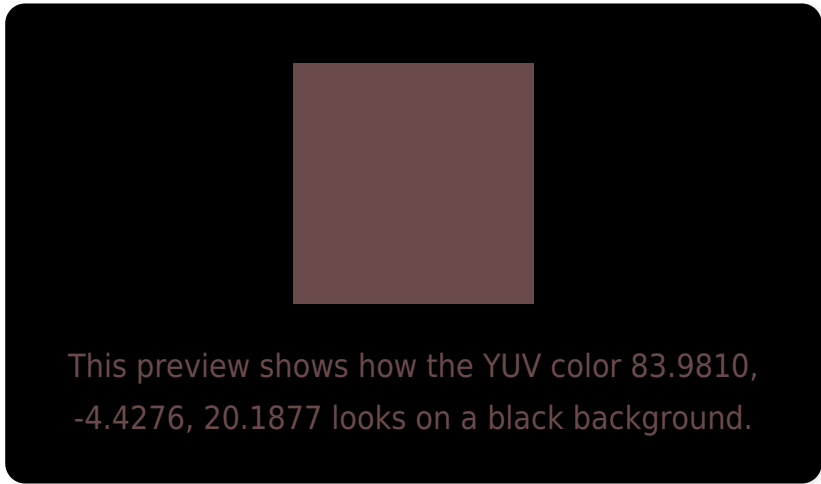
Large Text (above 18pt) WCAG AA ✓ Pass

Any Text WCAG AA ✓ Pass

Large Text (above 18pt) WCAG AAA ✓ Pass

Any Text WCAG AAA ✓ Pass

Black Background



Color Contrast Check

Large Text (above 18pt) WCAG AA × Fail

Any Text WCAG AA × Fail

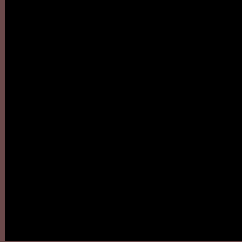
Large Text (above 18pt) WCAG AAA × Fail

Any Text WCAG AAA × Fail

If you want to check with other color combinations, try the [Color Contrast Checker](#).

YUV 83.9810, -4.4276, 20.1877

Background



This preview shows how black text looks on a background with the YUV color 83.9810, -4.4276, 20.1877.



This preview shows how white text looks on a background with the YUV color 83.9810, -4.4276,

Color Blindness Simulation

Color vision deficiency is a very complex topic, and I could not describe the different causes any better than Wikipedia does, so if you want to learn more, you should check out their [article about color blindness](#).

Dichromacy



Original Color

83.9810, -4.4276, 20.1877

Protanopia

82.6690, -1.3158, 2.0443

Deuteranopia

83.5020, -4.6845, 9.2067



Tritanopia

83.8500, -2.3910, 20.3026

Trichromacy



Original Color

83.9810, -4.4276, 20.1877

Protanomaly

83.0720, -2.5005, 8.7069

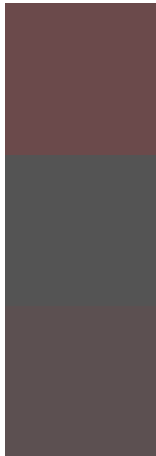
Deuteranomaly

83.8230, -4.8427, 13.3102

Tritanomaly

83.7360, -2.8278, 20.4025

Monochromacy



Original Color

83.9810, -4.4276, 20.1877

Achromatopsia

84.0000, 0.0000, 0.0000

Achromatomaly

83.7020, -1.3321, 7.2773

CSS Examples

Text

The CSS property to change the color of the text to YUV 83.9810, -4.4276, 20.1877 is called "color". The color property can be set on classes, ids or directly on the HTML element.

This example shows how text in the color `rgb(107, 74, 75)` looks like.

```
.text, #text, p{  
    color:rgb(107, 74, 75)  
}
```

If you want to add a text shadow in that color use the text-shadow property, you can generate a text shadow directly with our [CSS Text Shadow Generator](#).

Here you see how black text with a 4 pixel rgb(107, 74, 75) colored shadow looks like.

```
.shadow{ text-shadow: 4px 4px 2px rgb(107, 74, 75) }
```

Border

The CSS property to change the border of an element to YUV 83.9810, -4.4276, 20.1877 is called "border". The border property can be set on classes, ids or directly on the HTML element.

This example shows the color as border, it can be applied via the CSS property "border" or "border-color".

```
.border, #border, table{ border:4px solid rgb(107, 74, 75) }
```


If only the border color should be changed use the property `border-color`.

```
.border{ border-color:rgb(107, 74, 75) }
```

If you want to add a box shadow in that color use:

Here you see how a box with a 4 pixel `rgb(107, 74, 75)` colored shadow looks like.

```
.boxshadow{ -moz-box-shadow:4px 4px 4px  
4px rgb(107, 74, 75); -webkit-box-  
shadow:4px 4px 4px 4px rgb(107, 74, 75);  
box-shadow:4px 4px 4px 4px rgb(107, 74,  
75) }
```

Background

The CSS property to change the background color of an element to YUV 83.9810, -4.4276, 20.1877 is called "background". The background property can be set on classes, ids or directly on the HTML element.

```
.background, #background, body{  
background: rgb(107, 74, 75) }
```

If only the background color should be changed can be used:

```
.background{ background-color: rgb(107, 74,  
75) }
```

This example shows the color as background, it is applied via the CSS property "background".

To optimize and compress your CSS code, you can use our [online CSS compressor and optimizer](#) based on csstidy. If you want to create a linear or radial gradient as background or border, check our [CSS Gradient Generator](#).

Hey! You found this booklet interesting? Support Converting Colors with the new Membership Option!

The pro membership hides all ads, plus gives you double the colors in the color bucket, and more awesome pro features!

[Learn more, Memberships starting at \\$2.50/m!](#)

**Follow me
on Twitter!**

@ConvertingColor