

# Converting Colors

YUV(84.0880, -0.0434, 13.9548)

Have a look what the booklet for  
YUV(84.0880, -0.0434, 13.9548)  
contains.

<b>YUV(84.0880, -0.0434, 13.9548)</b> .....	3
<b><i>Conversions</i></b> .....	4
<b><i>Details</i></b> .....	6
<b><i>Harmonies</i></b> .....	12
<b><i>Previews</i></b> .....	24
<b><i>Color Blindness Simulation</i></b> .....	28
<b><i>CSS Examples</i></b> .....	31

# Color

**YUV(84.0880, -0.0434,  
13.9548)**

# Conversions

## Conversions Part 1

<b>Format</b>	<b>Color</b>
Hex	644C54
RGB	100, 76, 84
RGB Percent	39%, 30%, 33%
CMY	0.6078, 0.7020, 0.6706
CMYK	0.00, 0.24, 0.16, 0.61
HSL	340°, 14%, 35%
HSV	340°, 24%, 39%
XYZ	9.4402, 8.5183, 9.5341
YIQ	84.0880, 11.7360, 7.5760

# Conversions

## Conversions Part 2

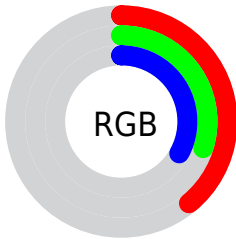
<b>Format</b>	<b>Color</b>
<b>RYB</b>	100, 76, 84
Decimal	6573140
CIELab	35.04, 11.55, -0.81
CIELCh	35, 11.583, 355.979
Yxy	8.5183, 0.3434, 0.3098
Android (android.graphics.Color)	4284763220 (0xFF644C54)
YUV	84.0880, -0.0434, 13.9548
Hunter-Lab	29.1861, 6.6598, 1.0622

# Details

The YUV color **84.0880, -0.0434, 13.9548** is a dark color, and the websafe version is hex **666666**. A complement of this color would be **91.9120, 0.0434, -13.9548**, and the grayscale version is **84.0000, 0.0000, 0.0000**.

A 20% lighter version of the original color is **133.6860, -0.3382, 15.1844**, and **39.0770, -0.0380, 12.2105** is the 20% darker color. If you saturate the color by 10%, you get **77.4200, -0.2071, 19.8027**, and if you desaturate by 10%, it is **90.7560, 0.1203, 8.1070**.

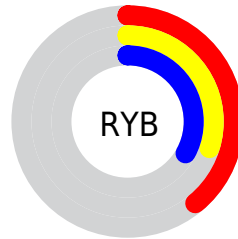
# Distribution



Red (39%)

Green (30%)

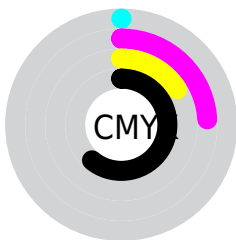
Blue (33%)



Red (39%)

Yellow (30%)

Blue (33%)

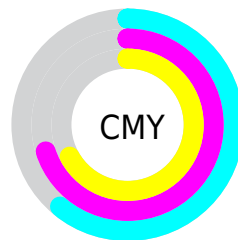


Cyan (0%)

Magenta (24%)

Yellow (16%)

Black (61%)



Cyan (61%)

Magenta (70%)

Yellow (67%)

# Brightness & Saturation Gradients

These gradients show how the YUV color 84.0880, -0.0434, 13.9548 changes by changing the brightness by 10 percent. The first figure shows a shift by +10% for each color and the second figure -10%.

Similar to the brightness gradients but the following saturation gradients show a change of the YUV color 84.0880, -0.0434, 13.9548 by changing the saturation by 10% instead.



■ 84.0880, -0.0434,  
13.9548

■ 84.0880, -0.0434,  
13.9548

■ 255.0000, 0.0000,  
0.0000

■ 60.7890, 0.1040,  
13.3400

■ 133.6860, -0.3382,  
15.1844

■ 39.0770, -0.0380,  
12.2105

■ 160.0990, -0.0488,  
15.6992

■ 17.0170, 0.9776,  
13.1401

■ 187.3980, -0.1962,  
16.3140

■ 0.0000, 0.0000,  
0.0000

■ 214.6970, -0.3436,  
16.9287

■ 240.7180, 1.1250,  
12.5253

84.0880, -0.0434,  
13.9548

84.0880, -0.0434,  
13.9548

77.4200, -0.2071,  
19.8027

90.7560, 0.1203,  
8.1070

70.8660, 0.0661,  
25.5505

97.3100, -0.1528,  
2.3591

64.1980, -0.0976,  
31.3984

103.9780, 0.0108,  
-3.4887

57.5300, -0.2613,  
37.2462

110.6460, 0.1745,  
-9.3365

50.9760, 0.0118,  
42.9940

117.2000, -0.0986,  
-15.0844

44.3080, -0.1518,  
48.8419

123.8680, 0.0651,  
-20.9322

37.6400, -0.3155,  
54.6897

130.5360, 0.2288,  
-26.7801

33.6620, -0.3264,

137.0900, -0.0444,

58.1784

-32.5279

 143.7580, 0.1193,  
-38.3758

# Harmonies

## Analogous

The Analogous color harmony consists of three colors that are next to each other on the color wheel.



84.1950, 4.3409, 7.7220



84.0880, -0.0434, 13.9548



83.6600, -4.2694, 16.0842

# Triad

The Triadic color harmony groups three colors that are evenly spaced from another and form a triangle on the color wheel.



84.0880, -0.0434, 13.9548



81.0510, -7.4201, -0.0447



79.4800, 8.6374, -17.0840

# Complementary

The Complementary color scheme is a pair of colors which are on the opposite of each other on the color wheel.



84.0880, -0.0434, 13.9548



91.9120, 0.0434, -13.9548

# Split Complementary

Split-complementary colors differ from the complementary color scheme. The scheme consists of three colors, the original color and two neighbors of the complement color.



78.9590, 5.4432, -19.2580



84.0880, -0.0434, 13.9548



80.2070, -4.0461, -8.9515

# Square

The Square scheme is like the rectangle color scheme, but the four colors are evenly spaced on the color wheel.



84.0880, -0.0434, 13.9548



82.0520, -8.8996, 7.8474



79.1290, 0.9224, -15.8991



81.7520, 9.4893, -10.3065



# Rectangle

The Rectangle color scheme consists of four colors that form a rectangle on the color wheel.



84.0880, -0.0434, 13.9548



83.6660, -6.7373, 14.3249



79.1290, 0.9224, -15.8991



79.2410, 7.7692, -18.6284

# Sweetspot

The Sweet Spot groups the original color and five complimentary colors.



84.0880, -0.0434, 13.9548



124.0330, -0.0163, 5.2331



83.5200, 8.1246, 7.4370



62.7230, 0.1366, 2.8739



194.0000, 0.0000, 0.0000



66.0000, 0.0000, 0.0000



# Same Dimension

The Same Dimension uses a secret algorithm to generate beautiful new colors.



84.0880, -0.0434, 13.9548



104.8440, 0.0769, 22.0618



85.5240, -4.6953, 12.6955



47.7230, 0.1366, 2.8739



38.7170, -0.3535, 66.9002



81.5920, -0.2919, 140.6778



# Inverse Universe

The Inverse Universe completely reimagines the original color for something new.



84.0880, -0.0434, 13.9548



104.8440, 0.0769, 22.0618



90.4760, 4.6953, -12.6955



47.7230, 0.1366, 2.8739



38.7170, -0.3535, 66.9002

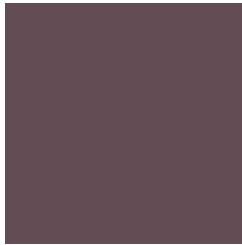


81.5920, -0.2919, 140.6778



# Previews

## White Background



This preview shows how the YUV color 84.0880, -0.0434, 13.9548 looks on a white background.

## Color Contrast Check

Large Text (above 18pt) WCAG AA ✓ Pass

Any Text WCAG AA ✓ Pass

Large Text (above 18pt) WCAG AAA ✓ Pass

Any Text WCAG AAA ✓ Pass



# Black Background



This preview shows how the YUV color 84.0880, -0.0434, 13.9548 looks on a black background.

## Color Contrast Check

Large Text (above 18pt) WCAG AA × Fail

Any Text WCAG AA × Fail

Large Text (above 18pt) WCAG AAA × Fail

Any Text WCAG AAA × Fail

If you want to check with other color combinations, try the [Color Contrast Checker](#).

**YUV 84.0880, -0.0434, 13.9548**

## **Background**



This preview shows how black text looks on a background with the YUV color 84.0880, -0.0434, 13.9548.



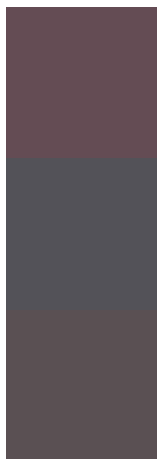
This preview shows how white text looks on a background with the YUV color 84.0880, -0.0434,



# Color Blindness Simulation

Color vision deficiency is a very complex topic, and I could not describe the different causes any better than Wikipedia does, so if you want to learn more, you should check out their [article about color blindness](#).

## Dichromacy



### Original Color

84.0880, -0.0434, 13.9548

### Protanopia

82.9830, 2.4734, 0.0149

### Deuteranopia

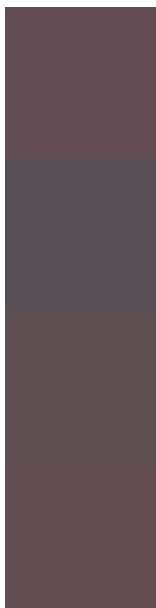
83.3320, -0.1637, 5.8478



## Tritanopia

83.8600, -0.9170, 14.1548

# Trichromacy



## Original Color

84.0880, -0.0434, 13.9548

## Protanomaly

83.4890, 1.7309, 4.8331

## Deuteranomaly

83.9410, -0.4639, 8.8217

## Tritanomaly

83.9740, -0.4802, 14.0548

# Monochromacy



## Original Color

84.0880, -0.0434, 13.9548

## Achromatopsia

84.0000, 0.0000, 0.0000

## Achromatomaly

84.0330, -0.0163, 5.2331

# CSS Examples

## Text

The CSS property to change the color of the text to YUV 84.0880, -0.0434, 13.9548 is called "color". The color property can be set on classes, ids or directly on the HTML element.

This example shows how text in the color `rgb(100, 76, 84)` looks like.

```
.text, #text, p{  
    color:rgb(100, 76, 84)  
}
```

If you want to add a text shadow in that color use the text-shadow property, you can generate a text shadow directly with our [CSS Text Shadow Generator](#).

Here you see how black text with a 4 pixel rgb(100, 76, 84) colored shadow looks like.

```
.shadow{ text-shadow: 4px 4px 2px rgb(100, 76, 84) }
```

## Border

The CSS property to change the border of an element to YUV 84.0880, -0.0434, 13.9548 is called "border". The border property can be set on classes, ids or directly on the HTML element.

This example shows the color as border, it can be applied via the CSS property "border" or "border-color".

```
.border, #border, table{ border:4px solid rgb(100, 76, 84) }
```



If only the border color should be changed use the property `border-color`.

```
.border{ border-color:rgb(100, 76, 84) }
```

If you want to add a box shadow in that color use:

Here you see how a box with a 4 pixel `rgb(100, 76, 84)` colored shadow looks like.

```
.boxshadow{ -moz-box-shadow:4px 4px 4px  
4px rgb(100, 76, 84); -webkit-box-  
shadow:4px 4px 4px 4px rgb(100, 76, 84);  
box-shadow:4px 4px 4px 4px rgb(100, 76,  
84) }
```

# Background

The CSS property to change the background color of an element to YUV 84.0880, -0.0434, 13.9548 is called "background". The background property can be set on classes, ids or directly on the HTML element.

```
.background, #background, body{  
background: rgb(100, 76, 84) }
```

If only the background color should be changed can be used:

```
.background{ background-color: rgb(100, 76,  
84) }
```

This example shows the color as background, it is applied via the CSS property "background".

To optimize and compress your CSS code, you can use our [online CSS compressor and optimizer](#) based on csstidy. If you want to create a linear or radial gradient as background or border, check our [CSS Gradient Generator](#).

Hey! You found this booklet interesting? Support Converting Colors with the new Membership Option!

The pro membership hides all ads, plus gives you double the colors in the color bucket, and more awesome pro features!

**[Learn more, Memberships starting at \\$2.50/m!](#)**

**Follow me  
on Twitter!**

@ConvertingColor