

Converting Colors

YUV(84.6870, -1.8177, 23.0765)

Have a look what the booklet for
YUV(84.6870, -1.8177, 23.0765)
contains.

YUV(84.6870, -1.8177, 23.0765)	3
<i>Conversions</i>	4
<i>Details</i>	6
<i>Harmonies</i>	12
<i>Previews</i>	24
<i>Color Blindness Simulation</i>	28
<i>CSS Examples</i>	31

Color

**YUV(84.6870, -1.8177,
23.0765)**

Conversions

Conversions Part 1

Format	Color
Hex	6F4851
RGB	111, 72, 81
RGB Percent	44%, 28%, 32%
CMY	0.5647, 0.7176, 0.6824
CMYK	0.00, 0.35, 0.27, 0.56
HSL	346°, 21%, 36%
HSV	346°, 35%, 44%
XYZ	10.3581, 8.6083, 8.9002
YIQ	84.6870, 20.3550, 11.0670

Conversions

Conversions Part 2

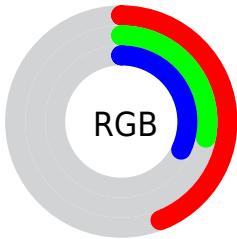
Format	Color
R_{YB}	111, 72, 81
Decimal	7293009
CIE _{Lab}	35.22, 18.06, 1.51
CIE _{LCh}	35, 18.119, 4.782
Yxy	8.6083, 0.3717, 0.3089
Android (android.graphics.Color)	4285483089 (0xFF6F4851)
YUV	84.6870, -1.8177, 23.0765
Hunter-Lab	29.3399, 11.6724, 2.5524

Details

The YUV color **84.6870, -1.8177, 23.0765** is a dark color, and the websafe version is hex **663333**. A complement of this color would be **98.3130, 1.8177, -23.0765**, and the grayscale version is **85.0000, 0.0000, 0.0000**.

A 20% lighter version of the original color is **134.8830, -2.4073, 25.5356**, and **38.6050, -0.7913, 20.5174** is the 20% darker color. If you saturate the color by 10%, you get **77.2040, -2.5656, 29.6391**, and if you desaturate by 10%, it is **92.1700, -1.0698, 16.5139**.

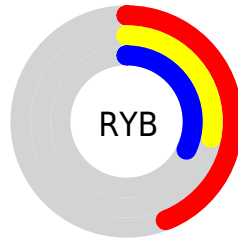
Distribution



Red (44%)

Green (28%)

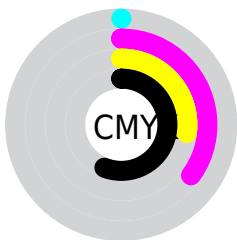
Blue (32%)



Red (44%)

Yellow (28%)

Blue (32%)

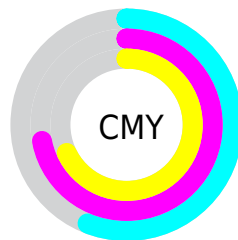


Cyan (0%)

Magenta (35%)

Yellow (27%)

Black (56%)



Cyan (56%)

Magenta (72%)

Yellow (68%)

Brightness & Saturation Gradients

These gradients show how the YUV color 84.6870, -1.8177, 23.0765 changes by changing the brightness by 10 percent. The first figure shows a shift by +10% for each color and the second figure -10%.

Similar to the brightness gradients but the following saturation gradients show a change of the YUV color 84.6870, -1.8177, 23.0765 by changing the saturation by 10% instead.

■ 84.6870, -1.8177,
23.0765

■ 84.6870, -1.8177,
23.0765

■ 255.0000, 0.0000,
0.0000

■ 61.0890, -1.5229,
21.8469

■ 134.8830, -2.4073,
25.5356

■ 38.6050, -0.7913,
20.5174

■ 161.1820, -2.5547,
26.1504

■ 16.6050, -0.7913,
20.5174

■ 188.4810, -2.7021,
26.7652

■ 0.0000, 0.0000,
0.0000

■ 216.1930, -2.5601,
27.8947

■ 237.9140, 0.5354,
14.9844

■ 84.6870, -1.8177,
23.0765

■ 84.6870, -1.8177,
23.0765

■ 77.2040, -2.5656,
29.6391

■ 92.1700, -1.0698,
16.5139

■ 69.8350, -2.8767,
36.1017

■ 99.5390, -0.7587,
10.0513

■ 62.3520, -3.6245,
42.6643

■ 107.0220, -0.0108,
3.4887

■ 54.9830, -3.9356,
49.1269

■ 114.3910, 0.3002,
-2.9739

■ 47.5000, -4.6835,
55.6895

■ 122.4610, 0.7587,
-10.0513

■ 39.5440, -4.7052,
62.6669

■ 129.8300, 1.0698,
-16.5139

■ 36.1530, -5.0054,
65.6408

■ 137.3130, 1.8177,
-23.0765

■ 144.6820, 2.1288,

-29.5391

■ 152.1650, 2.8767,
-36.1017

Harmonies

Analogous

The Analogous color harmony consists of three colors that are next to each other on the color wheel.



85.0650, 4.8980, 15.7290



84.6870, -1.8177, 23.0765



84.2650, -8.5116, 23.4466

Triad

The Triadic color harmony groups three colors that are evenly spaced from another and form a triangle on the color wheel.



84.6870, -1.8177, 23.0765



80.2200, -10.4615, -4.5779



78.1350, 15.2164, -27.3054

Complementary

The Complementary color scheme is a pair of colors which are on the opposite of each other on the color wheel.



84.6870, -1.8177, 23.0765



98.3130, 1.8177, -23.0765

Split Complementary

Split-complementary colors differ from the complementary color scheme. The scheme consists of three colors, the original color and two neighbors of the complement color.



74.8800, 11.8912, -34.0978



84.6870, -1.8177, 23.0765



78.1520, -4.0189, -17.6733

Square

The Square scheme is like the rectangle color scheme, but the four colors are evenly spaced on the color wheel.



84.6870, -1.8177, 23.0765



82.0860, -13.8464, 7.8176



75.9640, 4.4547, -28.9094



81.4080, 14.5889, -12.6358

Rectangle

The Rectangle color scheme consists of four colors that form a rectangle on the color wheel.



84.6870, -1.8177, 23.0765



83.1460, -11.4110, 20.0430



75.9640, 4.4547, -28.9094



76.5860, 14.5011, -31.2089

Sweetspot

The Sweet Spot groups the original color and five complimentary colors.



84.6870, -1.8177, 23.0765



134.2400, -0.6113, 9.4365



85.4160, 12.6129, 14.5442



67.3320, -0.1637, 5.8478



201.0000, 0.0000, 0.0000



74.0000, 0.0000, 0.0000

Same Dimension

The Same Dimension uses a secret algorithm to generate beautiful new colors.



84.6870, -1.8177, 23.0765



103.8350, -2.8767, 36.1017



89.5310, -8.6428, 18.8283



52.0220, -0.0108, 3.4887



39.0720, -5.4585, 70.9739



80.3510, -11.5120, 146.1512

Inverse Universe

The Inverse Universe completely reimagines the original color for something new.



84.6870, -1.8177, 23.0765



103.8350, -2.8767, 36.1017



93.4690, 8.6428, -18.8283



52.0220, -0.0108, 3.4887



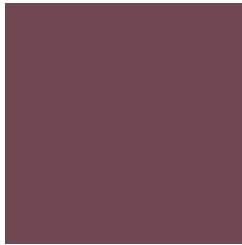
39.0720, -5.4585, 70.9739



80.3510, -11.5120, 146.1512

Previews

White Background



This preview shows how the YUV color 84.6870, -1.8177, 23.0765 looks on a white background.

Color Contrast Check

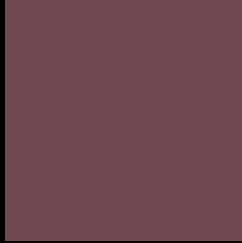
Large Text (above 18pt) WCAG AA ✓ Pass

Any Text WCAG AA ✓ Pass

Large Text (above 18pt) WCAG AAA ✓ Pass

Any Text WCAG AAA ✓ Pass

Black Background



This preview shows how the YUV color 84.6870, -1.8177, 23.0765 looks on a black background.

Color Contrast Check

Large Text (above 18pt) WCAG AA × Fail

Any Text WCAG AA × Fail

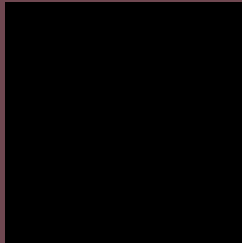
Large Text (above 18pt) WCAG AAA × Fail

Any Text WCAG AAA × Fail

If you want to check with other color combinations, try the [Color Contrast Checker](#).

YUV 84.6870, -1.8177, 23.0765

Background



This preview shows how black text looks on a background with the YUV color 84.6870, -1.8177, 23.0765.



This preview shows how white text looks on a background with the YUV color 84.6870, -1.8177,

Color Blindness Simulation

Color vision deficiency is a very complex topic, and I could not describe the different causes any better than Wikipedia does, so if you want to learn more, you should check out their [article about color blindness](#).

Dichromacy



Original Color

84.6870, -1.8177, 23.0765

Protanopia

83.4560, 1.7472, -0.3999

Deuteranopia

83.8870, -1.9163, 7.9921



Tritanopia

84.9320, -3.4175, 22.8616

Trichromacy



Original Color

84.6870, -1.8177, 23.0765

Protanomaly

83.8700, 0.5571, 8.0070

Deuteranomaly

84.2190, -2.0800, 13.8399

Tritanomaly

85.0460, -2.9807, 22.7617

Monochromacy



Original Color

84.6870, -1.8177, 23.0765

Achromatopsia

85.0000, 0.0000, 0.0000

Achromatomaly

84.6420, -0.3165, 8.2070

CSS Examples

Text

The CSS property to change the color of the text to YUV 84.6870, -1.8177, 23.0765 is called "color". The color property can be set on classes, ids or directly on the HTML element.

This example shows how text in the color `rgb(111, 72, 81)` looks like.

```
.text, #text, p{  
    color:rgb(111, 72, 81)  
}
```

If you want to add a text shadow in that color use the text-shadow property, you can generate a text shadow directly with our [CSS Text Shadow Generator](#).

Here you see how black text with a 4 pixel rgb(111, 72, 81) colored shadow looks like.

```
.shadow{ text-shadow: 4px 4px 2px rgb(111, 72, 81) }
```

Border

The CSS property to change the border of an element to YUV 84.6870, -1.8177, 23.0765 is called "border". The border property can be set on classes, ids or directly on the HTML element.

This example shows the color as border, it can be applied via the CSS property "border" or "border-color".

```
.border, #border, table{ border:4px solid rgb(111, 72, 81) }
```


If only the border color should be changed use the property border-color.

```
.border{ border-color:rgb(111, 72, 81) }
```

If you want to add a box shadow in that color use:

Here you see how a box with a 4 pixel rgb(111, 72, 81) colored shadow looks like.

```
.boxshadow{ -moz-box-shadow:4px 4px 4px  
4px rgb(111, 72, 81); -webkit-box-  
shadow:4px 4px 4px 4px rgb(111, 72, 81);  
box-shadow:4px 4px 4px 4px rgb(111, 72,  
81) }
```

Background

The CSS property to change the background color of an element to YUV 84.6870, -1.8177, 23.0765 is called "background". The background property can be set on classes, ids or directly on the HTML element.

```
.background, #background, body{  
background: rgb(111, 72, 81) }
```

If only the background color should be changed can be used:

```
.background{ background-color: rgb(111, 72,  
81) }
```

This example shows the color as background, it is applied via the CSS property "background".

To optimize and compress your CSS code, you can use our [online CSS compressor and optimizer](#) based on csstidy. If you want to create a linear or radial gradient as background or border, check our [CSS Gradient Generator](#).

Hey! You found this booklet interesting? Support Converting Colors with the new Membership Option!

The pro membership hides all ads, plus gives you double the colors in the color bucket, and more awesome pro features!

[Learn more, Memberships starting at \\$2.50/m!](#)

**Follow me
on Twitter!**

@ConvertingColor