

Converting Colors

YUV(85.1480, -1.0590, 13.0252)

Have a look what the booklet for
YUV(85.1480, -1.0590, 13.0252)
contains.

YUV(85.1480, -1.0590, 13.0252)	3
<i>Conversions</i>	4
<i>Details</i>	6
<i>Harmonies</i>	12
<i>Previews</i>	24
<i>Color Blindness Simulation</i>	28
<i>CSS Examples</i>	31

Color

**YUV(85.1480, -1.0590,
13.0252)**

Conversions

Conversions Part 1

Format	Color
Hex	644E53
RGB	100, 78, 83
RGB Percent	39%, 31%, 33%
CMY	0.6078, 0.6941, 0.6745
CMYK	0.00, 0.22, 0.17, 0.61
HSL	346°, 12%, 35%
HSV	346°, 22%, 39%
XYZ	9.5413, 8.7826, 9.3760
YIQ	85.1480, 11.5070, 6.2190

Conversions

Conversions Part 2

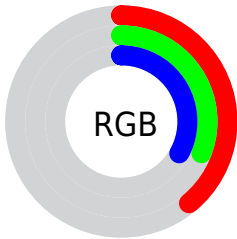
Format	Color
R_{YB}	100, 78, 83
Decimal	6573651
CIE Lab	35.56, 10.12, 0.58
CIE LCh	36, 10.142, 3.294
Yxy	8.7826, 0.3445, 0.3171
Android (android.graphics.Color)	4284763731 (0xFF644E53)
YUV	85.1480, -1.0590, 13.0252
Hunter-Lab	29.6355, 5.6065, 1.9870

Details

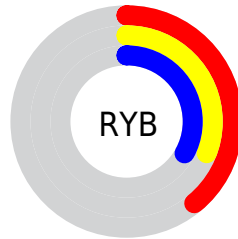
The YUV color **85.1480, -1.0590, 13.0252** is a dark color, and the websafe version is hex **666666**. A complement of this color would be **92.8520, 1.0590, -13.0252**, and the grayscale version is **85.0000, 0.0000, 0.0000**.

A 20% lighter version of the original color is **134.7460, -1.3538, 14.2548**, and **40.1370, -1.0535, 11.2809** is the 20% darker color. If you saturate the color by 10%, you get **78.3660, -1.6594, 18.9730**, and if you desaturate by 10%, it is **91.9300, -0.4585, 7.0774**.

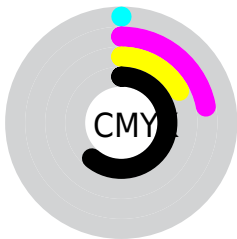
Distribution



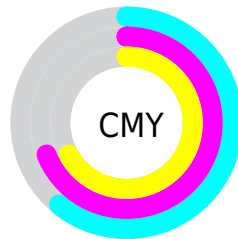
- Red (39%)
- Green (31%)
- Blue (33%)



- Red (39%)
- Yellow (31%)
- Blue (33%)



- Cyan (0%)
- Magenta (22%)
- Yellow (17%)
- Black (61%)



- Cyan (61%)
- Magenta (69%)
- Yellow (67%)

Brightness & Saturation Gradients

These gradients show how the YUV color 85.1480, -1.0590, 13.0252 changes by changing the brightness by 10 percent. The first figure shows a shift by +10% for each color and the second figure -10%.

Similar to the brightness gradients but the following saturation gradients show a change of the YUV color 85.1480, -1.0590, 13.0252 by changing the saturation by 10% instead.

85.1480, -1.0590,
13.0252

85.1480, -1.0590,
13.0252

255.0000, 0.0000,
0.0000

61.8490, -0.9116,
12.4104

134.7460, -1.3538,
14.2548

40.1370, -1.0535,
11.2809

161.0450, -1.5012,
14.8695

18.6640, -0.3274,
11.6957

188.3440, -1.6486,
15.4843

0.0000, 0.0000,
0.0000

215.7570, -1.3592,
15.9991

242.2510, -0.6167,
11.1809

■ 85.1480, -1.0590,
13.0252

■ 85.1480, -1.0590,
13.0252

■ 78.3660, -1.6594,
18.9730

■ 91.9300, -0.4585,
7.0774

■ 71.6980, -1.8231,
24.8209

■ 98.5980, -0.2948,
1.2296

■ 64.9160, -2.4236,
30.7687

■ 105.3800, 0.3057,
-4.7183

■ 58.1340, -3.0241,
36.7165

■ 112.1620, 0.9061,
-10.6661

■ 51.3520, -3.6245,
42.6643

■ 118.9440, 1.5066,
-16.6139

■ 44.6840, -3.7882,
48.5121

■ 125.6120, 1.6703,
-22.4617

■ 37.9020, -4.3887,
54.4599

■ 132.3940, 2.2708,
-28.4095

■ 32.5220, -4.6943,

■ 139.1760, 2.8712,

59.1782

-34.3574

■ 145.9580, 3.4717,
-40.3052

Harmonies

Analogous

The Analogous color harmony consists of three colors that are next to each other on the color wheel.



85.1520, 2.8831, 8.6367



85.1480, -1.0590, 13.0252



84.8230, -4.8427, 13.3102

Triad

The Triadic color harmony groups three colors that are evenly spaced from another and form a triangle on the color wheel.



85.1480, -1.0590, 13.0252



82.3820, -6.1043, -2.0890



81.6870, 8.0423, -12.8805

Complementary

The Complementary color scheme is a pair of colors which are on the opposite of each other on the color wheel.



85.1480, -1.0590, 13.0252



92.8520, 1.0590, -13.0252

Split Complementary

Split-complementary colors differ from the complementary color scheme. The scheme consists of three colors, the original color and two neighbors of the complement color.



80.6820, 5.5798, -16.3841



85.1480, -1.0590, 13.0252



81.5490, -2.7357, -9.2515

Square

The Square scheme is like the rectangle color scheme, but the four colors are evenly spaced on the color wheel.



85.1480, -1.0590, 13.0252



83.0840, -7.4364, 5.1883



80.3680, 1.7906, -14.3547



83.4320, 8.1680, -6.5179

Rectangle

The Rectangle color scheme consists of four colors that form a rectangle on the color wheel.



85.1480, -1.0590, 13.0252



84.3560, -6.5845, 11.9658



80.3680, 1.7906, -14.3547



81.1490, 7.3215, -15.0397

Sweetspot

The Sweet Spot groups the original color and five complimentary colors.



85.1480, -1.0590, 13.0252



123.9190, -0.4531, 5.3330



85.5910, 7.1036, 8.2517



62.6090, -0.3002, 2.9739



194.0000, 0.0000, 0.0000



66.0000, 0.0000, 0.0000

Same Dimension

The Same Dimension uses a secret algorithm to generate beautiful new colors.



85.1480, -1.0590, 13.0252



107.0780, -1.5175, 20.1026



88.1000, -4.9793, 10.4363



47.6090, -0.3002, 2.9739



37.3490, -5.5951, 68.0999



78.6280, -11.6486, 143.2772

Inverse Universe

The Inverse Universe completely reimagines the original color for something new.



85.1480, -1.0590, 13.0252



107.0780, -1.5175, 20.1026



89.9000, 4.9793, -10.4363



47.6090, -0.3002, 2.9739



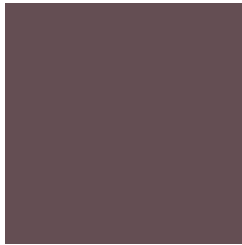
37.3490, -5.5951, 68.0999



78.6280, -11.6486, 143.2772

Previews

White Background



This preview shows how the YUV color 85.1480, -1.0590, 13.0252 looks on a white background.

Color Contrast Check

Large Text (above 18pt) WCAG AA ✓ Pass

Any Text WCAG AA ✓ Pass

Large Text (above 18pt) WCAG AAA ✓ Pass

Any Text WCAG AAA ✓ Pass

Black Background



This preview shows how the YUV color 85.1480, -1.0590, 13.0252 looks on a black background.

Color Contrast Check

Large Text (above 18pt) WCAG AA × Fail

Any Text WCAG AA × Fail

Large Text (above 18pt) WCAG AAA × Fail

Any Text WCAG AAA × Fail

If you want to check with other color combinations, try the [Color Contrast Checker](#).

YUV 85.1480, -1.0590, 13.0252

Background



This preview shows how black text looks on a background with the YUV color 85.1480, -1.0590, 13.0252.

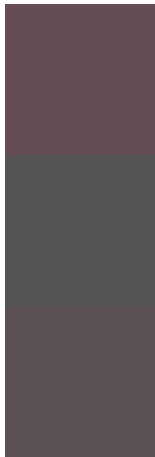


This preview shows how white text looks on a background with the YUV color 85.1480, -1.0590,

Color Blindness Simulation

Color vision deficiency is a very complex topic, and I could not describe the different causes any better than Wikipedia does, so if you want to learn more, you should check out their [article about color blindness](#).

Dichromacy



Original Color

85.1480, -1.0590, 13.0252

Protanopia

83.9400, 1.0156, 0.9296

Deuteranopia

84.4030, -1.1847, 6.6626



Tritanopia

85.2620, -0.6222, 12.9252

Trichromacy



Original Color

85.1480, -1.0590, 13.0252

Protanomaly

84.1470, 0.4205, 5.1331

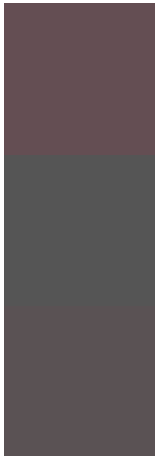
Deuteranomaly

84.7130, -1.3375, 9.0217

Tritanomaly

85.2620, -0.6222, 12.9252

Monochromacy



Original Color

85.1480, -1.0590, 13.0252

Achromatopsia

85.0000, 0.0000, 0.0000

Achromatomaly

84.6200, -0.3057, 4.7183

CSS Examples

Text

The CSS property to change the color of the text to YUV 85.1480, -1.0590, 13.0252 is called "color". The color property can be set on classes, ids or directly on the HTML element.

This example shows how text in the color `rgb(100, 78, 83)` looks like.

```
.text, #text, p{  
    color:rgb(100, 78, 83)  
}
```

If you want to add a text shadow in that color use the text-shadow property, you can generate a text shadow directly with our [CSS Text Shadow Generator](#).

Here you see how black text with a 4 pixel rgb(100, 78, 83) colored shadow looks like.

```
.shadow{ text-shadow: 4px 4px 2px rgb(100, 78, 83) }
```

Border

The CSS property to change the border of an element to YUV 85.1480, -1.0590, 13.0252 is called "border". The border property can be set on classes, ids or directly on the HTML element.

This example shows the color as border, it can be applied via the CSS property "border" or "border-color".

```
.border, #border, table{ border:4px solid rgb(100, 78, 83) }
```


If only the border color should be changed use the property border-color.

```
.border{ border-color:rgb(100, 78, 83) }
```

If you want to add a box shadow in that color use:

Here you see how a box with a 4 pixel rgb(100, 78, 83) colored shadow looks like.

```
.boxshadow{ -moz-box-shadow:4px 4px 4px  
4px rgb(100, 78, 83); -webkit-box-  
shadow:4px 4px 4px 4px rgb(100, 78, 83);  
box-shadow:4px 4px 4px 4px rgb(100, 78,  
83) }
```

Background

The CSS property to change the background color of an element to YUV 85.1480, -1.0590, 13.0252 is called "background". The background property can be set on classes, ids or directly on the HTML element.

```
.background, #background, body{  
background: rgb(100, 78, 83) }
```

If only the background color should be changed can be used:

```
.background{ background-color: rgb(100, 78,  
83) }
```

This example shows the color as background, it is applied via the CSS property "background".

To optimize and compress your CSS code, you can use our [online CSS compressor and optimizer](#) based on csstidy. If you want to create a linear or radial gradient as background or border, check our [CSS Gradient Generator](#).

Hey! You found this booklet interesting? Support Converting Colors with the new Membership Option!

The pro membership hides all ads, plus gives you double the colors in the color bucket, and more awesome pro features!

[Learn more, Memberships starting at \\$2.50/m!](#)

**Follow me
on Twitter!**

@ConvertingColor