

Converting Colors

YUV(85.5450, -3.2267, 8.2920)

Have a look what the booklet for
YUV(85.5450, -3.2267, 8.2920)
contains.

YUV(85.5450, -3.2267, 8.2920)	3
<i>Conversions</i>	4
<i>Details</i>	6
<i>Harmonies</i>	12
<i>Previews</i>	24
<i>Color Blindness Simulation</i>	28
<i>CSS Examples</i>	31

Color

**YUV(85.5450, -3.2267,
8.2920)**

Conversions

Conversions Part 1

Format	Color
Hex	5F524F
RGB	95, 82, 79
RGB Percent	37%, 32%, 31%
CMY	0.6275, 0.6784, 0.6902
CMYK	0.00, 0.14, 0.17, 0.63
HSL	11°, 9%, 34%
HSV	11°, 17%, 37%
XYZ	9.1479, 9.0320, 8.6583
YIQ	85.5450, 8.7110, 1.8230

Conversions

Conversions Part 2

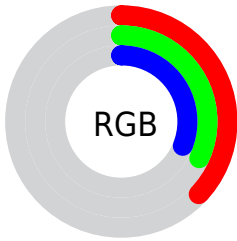
Format	Color
R_{YB}	95, 83, 79
Decimal	6246991
CIE _{Lab}	36.05, 4.80, 3.73
CIE _{LCh}	36, 6.081, 37.831
Yxy	9.0320, 0.3409, 0.3365
Android (android.graphics.Color)	4284437071 (0xFF5F524F)
YUV	85.5450, -3.2267, 8.2920
Hunter-Lab	30.0533, 1.7402, 3.9559

Details

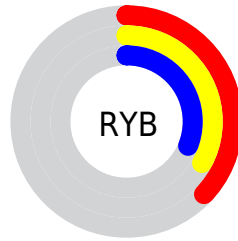
The YUV color **85.5450, -3.2267, 8.2920** is a dark color, and the websafe version is hex **666666**. A complement of this color would be **88.4550, 3.2267, -8.2920**, and the grayscale version is **86.0000, 0.0000, 0.0000**.

A 20% lighter version of the original color is **135.1430, -3.5215, 9.5216**, and **40.3600, -2.6425, 7.5773** is the 20% darker color. If you saturate the color by 10%, you get **79.8230, -4.8427, 13.3102**, and if you desaturate by 10%, it is **91.3810, -1.1738, 3.1739**.

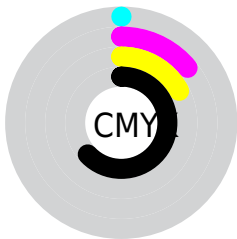
Distribution



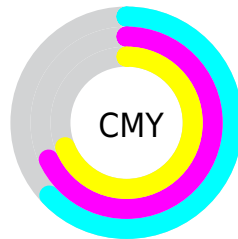
- Red (37%)
- Green (32%)
- Blue (31%)



- Red (37%)
- Yellow (33%)
- Blue (31%)



- Cyan (0%)
- Magenta (14%)
- Yellow (17%)
- Black (63%)



- Cyan (63%)
- Magenta (68%)
- Yellow (69%)

Brightness & Saturation Gradients

These gradients show how the YUV color 85.5450, -3.2267, 8.2920 changes by changing the brightness by 10 percent. The first figure shows a shift by +10% for each color and the second figure -10%.

Similar to the brightness gradients but the following saturation gradients show a change of the YUV color 85.5450, -3.2267, 8.2920 by changing the saturation by 10% instead.

■ 85.5450, -3.2267,
8.2920

■ 85.5450, -3.2267,
8.2920

■ 255.0000, 0.0000,
0.0000

■ 62.2460, -3.0793,
7.6773

■ 135.1430, -3.5215,
9.5216

■ 40.3600, -2.6425,
7.5773

■ 161.1430, -3.5215,
9.5216

■ 19.8330, -3.3687,
7.1625

■ 188.4420, -3.6689,
10.1364

■ 0.0000, 0.0000,
0.0000

■ 216.3280, -4.1057,
10.2363

■ 244.1430, -3.5215,
9.5216

■ 85.5450, -3.2267,
8.2920

■ 85.5450, -3.2267,
8.2920

■ 79.8230, -4.8427,
13.3102

■ 91.3810, -1.1738,
3.1739

■ 74.5740, -7.1850,
17.9136

■ 96.5160, 0.7316,
-1.3295

■ 68.8520, -8.8010,
22.9318

■ 102.3520, 2.7845,
-6.4477

■ 63.0160, -10.8539,
28.0500

■ 108.0740, 4.4005,
-11.4659

■ 57.2940, -12.4699,
33.0682

■ 113.7960, 6.0166,
-16.4841

■ 52.0450, -14.8122,
37.6715

■ 119.0450, 8.3588,
-21.0875

■ 46.3230, -16.4282,
42.6897

■ 124.8810, 10.4117,
-26.2056

■ 40.4870, -18.4811,

■ 130.6030, 12.0277,

47.8079

-31.2238

■ 38.9710, -19.2127,
49.1374

■ 135.8520, 14.3700,
-35.8272

Harmonies

Analogous

The Analogous color harmony consists of three colors that are next to each other on the color wheel.



86.1150, -1.0427, 7.7921



85.5450, -3.2267, 8.2920



84.8930, -4.3842, 6.2328

Triad

The Triadic color harmony groups three colors that are evenly spaced from another and form a triangle on the color wheel.



85.5450, -3.2267, 8.2920



83.3260, -1.1467, -5.5479



84.8300, 4.5208, -3.3589

Complementary

The Complementary color scheme is a pair of colors which are on the opposite of each other on the color wheel.



85.5450, -3.2267, 8.2920



88.4550, 3.2267, -8.2920

Split Complementary

Split-complementary colors differ from the complementary color scheme. The scheme consists of three colors, the original color and two neighbors of the complement color.



83.9220, 4.9685, -6.9476



85.5450, -3.2267, 8.2920



83.2870, 1.3375, -9.0217

Square

The Square scheme is like the rectangle color scheme, but the four colors are evenly spaced on the color wheel.



85.5450, -3.2267, 8.2920



83.7780, -3.3416, -1.5593



83.2700, 3.8109, -9.0068



85.2220, 3.3416, 1.5593

Rectangle

The Rectangle color scheme consists of four colors that form a rectangle on the color wheel.



85.5450, -3.2267, 8.2920



84.4690, -4.6682, 3.9737



83.2700, 3.8109, -9.0068



84.2320, 4.8156, -4.5885

Sweetspot

The Sweet Spot groups the original color and five complimentary colors.



85.5450, -3.2267, 8.2920



118.3810, -1.1738, 3.1739



85.2660, 3.3199, 8.5367



58.8970, -0.4422, 1.8443



189.0000, 0.0000, 0.0000



61.0000, 0.0000, 0.0000

Same Dimension

The Same Dimension uses a secret algorithm to generate beautiful new colors.



85.5450, -3.2267, 8.2920



108.1110, -4.9847, 12.1807



90.2410, -5.5418, 4.1736



45.7830, -0.8790, 1.9443



45.8150, -22.5868, 58.0442



98.1750, -48.4003, 124.3805

Inverse Universe

The Inverse Universe completely reimagines the original color for something new.



88.4550, 3.2267, -8.2920



112.4760, 4.6953, -12.6955



83.7590, 5.5418, -4.1736



46.8040, 0.5896, -2.4591



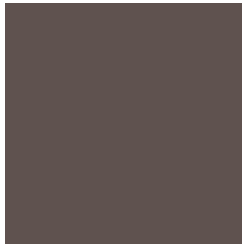
66.1850, 22.5868, -58.0442



141.8250, 48.4003, -124.3805

Previews

White Background



This preview shows how the YUV color 85.5450, -3.2267, 8.2920 looks on a white background.

Color Contrast Check

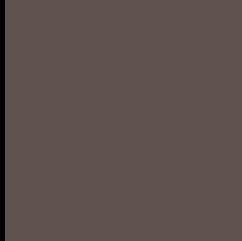
Large Text (above 18pt) WCAG AA ✓ Pass

Any Text WCAG AA ✓ Pass

Large Text (above 18pt) WCAG AAA ✓ Pass

Any Text WCAG AAA ✓ Pass

Black Background



This preview shows how the YUV color 85.5450, -3.2267, 8.2920 looks on a black background.

Color Contrast Check

Large Text (above 18pt) WCAG AA × Fail

Any Text WCAG AA × Fail

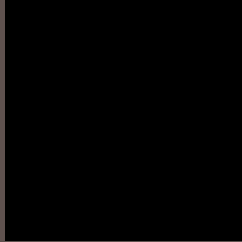
Large Text (above 18pt) WCAG AAA × Fail

Any Text WCAG AAA × Fail

If you want to check with other color combinations, try the [Color Contrast Checker](#).

YUV 85.5450, -3.2267, 8.2920

Background



This preview shows how black text looks on a background with the YUV color 85.5450, -3.2267, 8.2920.



This preview shows how white text looks on a background with the YUV color 85.5450, -3.2267,

Color Blindness Simulation

Color vision deficiency is a very complex topic, and I could not describe the different causes any better than Wikipedia does, so if you want to learn more, you should check out their [article about color blindness](#).

Dichromacy



Original Color

85.5450, -3.2267, 8.2920

Protanopia

85.0280, -2.4788, 1.7294

Deuteranopia

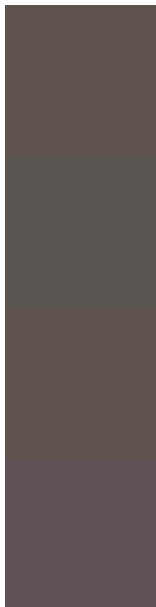
85.5450, -3.2267, 8.2920



Tritanopia

86.1690, 0.4097, 8.6218

Trichromacy



Original Color

85.5450, -3.2267, 8.2920

Protanomaly

85.3380, -2.6316, 4.0886

Deuteranomaly

85.5450, -3.2267, 8.2920

Tritanomaly

85.8270, -0.9007, 8.9217

Monochromacy



Original Color

85.5450, -3.2267, 8.2920

Achromatopsia

86.0000, 0.0000, 0.0000

Achromatomaly

85.9680, -1.4632, 2.6591

CSS Examples

Text

The CSS property to change the color of the text to YUV 85.5450, -3.2267, 8.2920 is called "color". The color property can be set on classes, ids or directly on the HTML element.

This example shows how text in the color `rgb(95, 82, 79)` looks like.

```
.text, #text, p{  
    color:rgb(95, 82, 79)  
}
```

If you want to add a text shadow in that color use the text-shadow property, you can generate a text shadow directly with our [CSS Text Shadow Generator](#).

Here you see how black text with a 4 pixel rgb(95, 82, 79) colored shadow looks like.

```
.shadow{ text-shadow: 4px 4px 2px rgb(95, 82, 79) }
```

Border

The CSS property to change the border of an element to YUV 85.5450, -3.2267, 8.2920 is called "border". The border property can be set on classes, ids or directly on the HTML element.

This example shows the color as border, it can be applied via the CSS property "border" or "border-color".

```
.border, #border, table{ border:4px solid rgb(95, 82, 79) }
```


If only the border color should be changed use the property `border-color`.

```
.border{ border-color:rgb(95, 82, 79) }
```

If you want to add a box shadow in that color use:

Here you see how a box with a 4 pixel `rgb(95, 82, 79)` colored shadow looks like.

```
.boxshadow{ -moz-box-shadow:4px 4px 4px  
4px rgb(95, 82, 79); -webkit-box-  
shadow:4px 4px 4px 4px rgb(95, 82, 79);  
box-shadow:4px 4px 4px 4px rgb(95, 82, 79)  
}
```

Background

The CSS property to change the background color of an element to YUV 85.5450, -3.2267, 8.2920 is called "background". The background property can be set on classes, ids or directly on the HTML element.

```
.background, #background, body{  
background: rgb(95, 82, 79) }
```

If only the background color should be changed can be used:

```
.background{ background-color: rgb(95, 82,  
79) }
```

This example shows the color as background, it is applied via the CSS property "background".

To optimize and compress your CSS code, you can use our [online CSS compressor and optimizer](#) based on csstidy. If you want to create a linear or radial gradient as background or border, check our [CSS Gradient Generator](#).

Hey! You found this booklet interesting? Support Converting Colors with the new Membership Option!

The pro membership hides all ads, plus gives you double the colors in the color bucket, and more awesome pro features!

[Learn more, Memberships starting at \\$2.50/m!](#)

**Follow me
on Twitter!**

@ConvertingColor