

Converting Colors

YUV(93.1760, -3.5378, 14.7546)

Have a look what the booklet for
YUV(93.1760, -3.5378, 14.7546)
contains.

YUV(93.1760, -3.5378, 14.7546)	3
<i>Conversions</i>	4
<i>Details</i>	6
<i>Harmonies</i>	12
<i>Previews</i>	24
<i>Color Blindness Simulation</i>	28
<i>CSS Examples</i>	31

Color

**YUV(93.1760, -3.5378,
14.7546)**

Conversions

Conversions Part 1

Format	Color
Hex	6E5656
RGB	110, 86, 86
RGB Percent	43%, 34%, 34%
CMY	0.5686, 0.6627, 0.6627
CMYK	0.00, 0.22, 0.22, 0.57
HSL	0°, 12%, 38%
HSV	0°, 22%, 43%
XYZ	11.4379, 10.6425, 10.2555
YIQ	93.1760, 14.3040, 5.0880

Conversions

Conversions Part 2

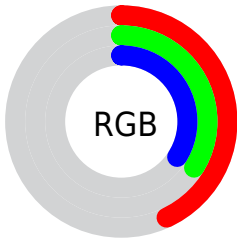
Format	Color
R _Y B	110, 86, 86
Decimal	7231062
CIE Lab	38.97, 9.91, 3.78
CIE LCh	39, 10.604, 20.892
Yxy	10.6425, 0.3537, 0.3291
Android (android.graphics.Color)	4285421142 (0xFF6E5656)
YUV	93.1760, -3.5378, 14.7546
Hunter-Lab	32.6228, 5.4942, 4.1973

Details

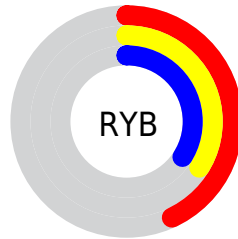
The YUV color **93.1760, -3.5378, 14.7546** is a dark color, and the websafe version is hex **666666**. A complement of this color would be **102.8240, 3.5378, -14.7546**, and the grayscale version is **93.0000, 0.0000, 0.0000**.

A 20% lighter version of the original color is **143.7740, -3.8326, 15.9842**, and **47.2790, -3.0955, 12.9103** is the 20% darker color. If you saturate the color by 10%, you get **85.4650, -5.1592, 21.5172**, and if you desaturate by 10%, it is **100.8870, -1.9163, 7.9921**.

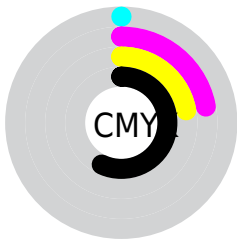
Distribution



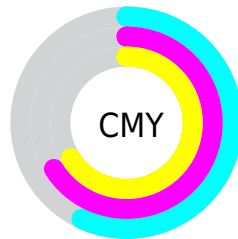
- Red (43%)
- Green (34%)
- Blue (34%)



- Red (43%)
- Yellow (34%)
- Blue (34%)



- Cyan (0%)
- Magenta (22%)
- Yellow (22%)
- Black (57%)



- Cyan (57%)
- Magenta (66%)
- Yellow (66%)

Brightness & Saturation Gradients

These gradients show how the YUV color 93.1760, -3.5378, 14.7546 changes by changing the brightness by 10 percent. The first figure shows a shift by +10% for each color and the second figure -10%.

Similar to the brightness gradients but the following saturation gradients show a change of the YUV color 93.1760, -3.5378, 14.7546 by changing the saturation by 10% instead.

■ 93.1760, -3.5378,
14.7546

■ 93.1760, -3.5378,
14.7546

■ 255.0000, 0.0000,
0.0000

■ 69.5780, -3.2430,
13.5251

■ 143.7740, -3.8326,
15.9842

■ 47.2790, -3.0955,
12.9103

■ 170.0730, -3.9800,
16.5990

■ 25.7950, -2.3639,
11.5808

■ 197.3720, -4.1274,
17.2138

■ 4.1860, -2.0637,
8.6069

■ 225.6710, -4.2748,
17.8285

■ 0.0000, 0.0000,
0.0000

■ 247.9900, -1.4741,
6.1478

■ 93.1760, -3.5378,
14.7546

■ 93.1760, -3.5378,
14.7546

■ 85.4650, -5.1592,
21.5172

■ 100.8870, -1.9163,
7.9921

■ 77.7540, -6.7807,
28.2797

■ 108.5980, -0.2948,
1.2296

■ 70.0430, -8.4022,
35.0423

■ 116.3090, 1.3267,
-5.5330

■ 62.3320, -10.0237,
41.8048

■ 124.0200, 2.9481,
-12.2955

■ 54.6210, -11.6452,
48.5674

■ 131.7310, 4.5696,
-19.0581

■ 46.9100, -13.2666,
55.3299

■ 139.4420, 6.1911,
-25.8206

■ 39.1990, -14.8881,
62.0925

■ 147.1530, 7.8126,
-32.5832

■ 32.8900, -16.2148,

■ 154.8640, 9.4340,

67.6255

-39.3457

■ 162.5750, 11.0555,
-46.1083

Harmonies

Analogous

The Analogous color harmony consists of three colors that are next to each other on the color wheel.



93.6040, 0.6882, 12.6253



93.1760, -3.5378, 14.7546



92.9540, -6.8793, 13.1953

Triad

The Triadic color harmony groups three colors that are evenly spaced from another and form a triangle on the color wheel.



93.1760, -3.5378, 14.7546



89.5170, -4.1989, -6.5924



90.6380, 9.0525, -10.2065

Complementary

The Complementary color scheme is a pair of colors which are on the opposite of each other on the color wheel.



93.1760, -3.5378, 14.7546



102.8240, 3.5378, -14.7546

Split Complementary

Split-complementary colors differ from the complementary color scheme. The scheme consists of three colors, the original color and two neighbors of the complement color.



89.5510, 7.6164, -16.2692



93.1760, -3.5378, 14.7546



89.2110, -0.1040, -13.3400

Square

The Square scheme is like the rectangle color scheme, but the four colors are evenly spaced on the color wheel.



93.1760, -3.5378, 14.7546



90.7630, -7.2782, 1.0848



88.7420, 4.5642, -17.3137



92.0520, 7.8624, -1.7996

Rectangle

The Rectangle color scheme consists of four colors that form a rectangle on the color wheel.



93.1760, -3.5378, 14.7546



92.0030, -7.8895, 10.5214



88.7420, 4.5642, -17.3137



90.2140, 8.7685, -12.4657

Sweetspot

The Sweet Spot groups the original color and five complimentary colors.



93.1760, -3.5378, 14.7546



135.9900, -1.4741, 6.1478



95.9120, 6.9454, 12.3552



67.4950, -0.7370, 3.0739



199.0000, 0.0000, 0.0000



71.0000, 0.0000, 0.0000

Same Dimension

The Same Dimension uses a secret algorithm to generate beautiful new colors.



93.1760, -3.5378, 14.7546



117.0630, -5.4541, 22.7467



100.2200, -7.0105, 8.5771



51.7940, -0.8844, 3.6887



35.8800, -17.6888, 73.7732



73.8530, -36.4095, 151.8499

Inverse Universe

The Inverse Universe completely reimagines the original color for something new.



102.8240, 3.5378, -14.7546



131.9370, 5.4541, -22.7467



95.7800, 7.0105, -8.5771



54.2060, 0.8844, -3.6887



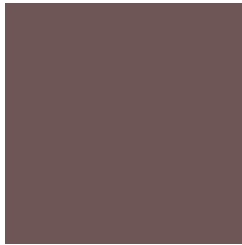
84.1200, 17.6888, -73.7732



173.1470, 36.4095, -151.8499

Previews

White Background



This preview shows how the YUV color 93.1760, -3.5378, 14.7546 looks on a white background.

Color Contrast Check

Large Text (above 18pt) WCAG AA ✓ Pass

Any Text WCAG AA ✓ Pass

Large Text (above 18pt) WCAG AAA ✓ Pass

Any Text WCAG AAA × Fail

Black Background



This preview shows how the YUV color 93.1760, -3.5378, 14.7546 looks on a black background.

Color Contrast Check

Large Text (above 18pt) WCAG AA ✓ Pass

Any Text WCAG AA × Fail

Large Text (above 18pt) WCAG AAA × Fail

Any Text WCAG AAA × Fail

If you want to check with other color combinations, try the [Color Contrast Checker](#).

YUV 93.1760, -3.5378, 14.7546

Background



This preview shows how black text looks on a background with the YUV color 93.1760, -3.5378, 14.7546.



This preview shows how white text looks on a background with the YUV color 93.1760, -3.5378,

Color Blindness Simulation

Color vision deficiency is a very complex topic, and I could not describe the different causes any better than Wikipedia does, so if you want to learn more, you should check out their [article about color blindness](#).

Dichromacy



Original Color

93.1760, -3.5378, 14.7546

Protanopia

92.2560, -1.6052, 1.5295

Deuteranopia

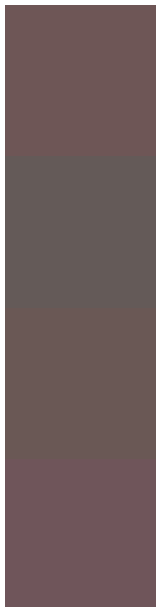
92.7300, -3.8109, 9.0068



Tritanopia

93.5720, -0.7750, 15.2844

Trichromacy



Original Color

93.1760, -3.5378, 14.7546

Protanomaly

92.7620, -2.3477, 6.3477

Deuteranomaly

93.0400, -3.9637, 11.3659

Tritanomaly

93.3440, -1.6486, 15.4843

Monochromacy



Original Color

93.1760, -3.5378, 14.7546

Achromatopsia

93.0000, 0.0000, 0.0000

Achromatomaly

92.6910, -1.3267, 5.5330

CSS Examples

Text

The CSS property to change the color of the text to YUV 93.1760, -3.5378, 14.7546 is called "color". The color property can be set on classes, ids or directly on the HTML element.

This example shows how text in the color `rgb(110, 86, 86)` looks like.

```
.text, #text, p{  
    color:rgb(110, 86, 86)  
}
```

If you want to add a text shadow in that color use the text-shadow property, you can generate a text shadow directly with our [CSS Text Shadow Generator](#).

Here you see how black text with a 4 pixel rgb(110, 86, 86) colored shadow looks like.

```
.shadow{ text-shadow: 4px 4px 2px rgb(110, 86, 86) }
```

Border

The CSS property to change the border of an element to YUV 93.1760, -3.5378, 14.7546 is called "border". The border property can be set on classes, ids or directly on the HTML element.

This example shows the color as border, it can be applied via the CSS property "border" or "border-color".

```
.border, #border, table{ border:4px solid rgb(110, 86, 86) }
```


If only the border color should be changed use the property border-color.

```
.border{ border-color:rgb(110, 86, 86) }
```

If you want to add a box shadow in that color use:

Here you see how a box with a 4 pixel rgb(110, 86, 86) colored shadow looks like.

```
.boxshadow{ -moz-box-shadow:4px 4px 4px  
4px rgb(110, 86, 86); -webkit-box-  
shadow:4px 4px 4px 4px rgb(110, 86, 86);  
box-shadow:4px 4px 4px 4px rgb(110, 86,  
86) }
```

Background

The CSS property to change the background color of an element to YUV 93.1760, -3.5378, 14.7546 is called "background". The background property can be set on classes, ids or directly on the HTML element.

```
.background, #background, body{  
background: rgb(110, 86, 86) }
```

If only the background color should be changed can be used:

```
.background{ background-color: rgb(110, 86,  
86) }
```

This example shows the color as background, it is applied via the CSS property "background".

To optimize and compress your CSS code, you can use our [online CSS compressor and optimizer](#) based on csstidy. If you want to create a linear or radial gradient as background or border, check our [CSS Gradient Generator](#).

Hey! You found this booklet interesting? Support Converting Colors with the new Membership Option!

The pro membership hides all ads, plus gives you double the colors in the color bucket, and more awesome pro features!

[Learn more, Memberships starting at \\$2.50/m!](#)

**Follow me
on Twitter!**

@ConvertingColor