

Converting Colors

YUV(94.1160, -2.5222, 15.6843)

Have a look what the booklet for
YUV(94.1160, -2.5222, 15.6843)
contains.

YUV(94.1160, -2.5222, 15.6843)	3
<i>Conversions</i>	4
<i>Details</i>	6
<i>Harmonies</i>	12
<i>Previews</i>	24
<i>Color Blindness Simulation</i>	28
<i>CSS Examples</i>	31

Color

**YUV(94.1160, -2.5222,
15.6843)**

Conversions

Conversions Part 1

Format	Color
Hex	705659
RGB	112, 86, 89
RGB Percent	44%, 34%, 35%
CMY	0.5608, 0.6627, 0.6510
CMYK	0.00, 0.23, 0.21, 0.56
HSL	353°, 13%, 39%
HSV	353°, 23%, 44%
XYZ	11.8131, 10.8216, 10.9174
YIQ	94.1160, 14.5330, 6.4450

Conversions

Conversions Part 2

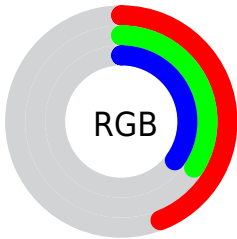
Format	Color
R _Y B	112, 86, 89
Decimal	7362137
CIE Lab	39.28, 11.25, 2.39
CIE LCh	39, 11.506, 12.005
Yxy	10.8216, 0.3521, 0.3225
Android (android.graphics.Color)	4285552217 (0xFF705659)
YUV	94.1160, -2.5222, 15.6843
Hunter-Lab	32.8962, 6.5312, 3.3506

Details

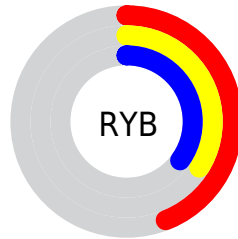
The YUV color **94.1160, -2.5222, 15.6843** is a dark color, and the websafe version is hex **666666**. A complement of this color would be **103.8840, 2.5222, -15.6843**, and the grayscale version is **94.0000, 0.0000, 0.0000**.

A 20% lighter version of the original color is **144.7140, -2.8170, 16.9138**, and **48.2190, -2.0800, 13.8399** is the 20% darker color. If you saturate the color by 10%, you get **86.5190, -3.7069, 22.3468**, and if you desaturate by 10%, it is **101.7130, -1.3375, 9.0217**.

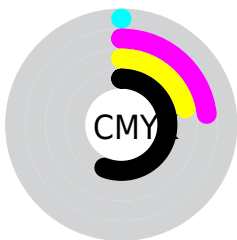
Distribution



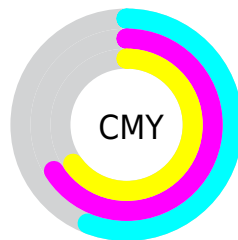
- Red (44%)
- Green (34%)
- Blue (35%)



- Red (44%)
- Yellow (34%)
- Blue (35%)



- Cyan (0%)
- Magenta (23%)
- Yellow (21%)
- Black (56%)



- Cyan (56%)
- Magenta (66%)
- Yellow (65%)

Brightness & Saturation Gradients

These gradients show how the YUV color 94.1160, -2.5222, 15.6843 changes by changing the brightness by 10 percent. The first figure shows a shift by +10% for each color and the second figure -10%.

Similar to the brightness gradients but the following saturation gradients show a change of the YUV color 94.1160, -2.5222, 15.6843 by changing the saturation by 10% instead.

■ 94.1160, -2.5222,
15.6843

■ 94.1160, -2.5222,
15.6843

■ 255.0000, 0.0000,
0.0000

■ 70.5180, -2.2274,
14.4547

■ 144.7140, -2.8170,
16.9138

■ 48.2190, -2.0800,
13.8399

■ 171.0130, -2.9644,
17.5286

■ 26.6210, -1.7852,
12.6104

■ 198.3120, -3.1118,
18.1434

■ 5.6810, -2.8007,
11.6808

■ 226.6110, -3.2592,
18.7582

■ 0.0000, 0.0000,
0.0000

■ 248.4460, 0.2731,
5.7479

■ 94.1160, -2.5222,
15.6843

■ 94.1160, -2.5222,
15.6843

■ 86.5190, -3.7069,
22.3468

■ 101.7130, -1.3375,
9.0217

■ 78.9220, -4.8915,
29.0094

■ 109.3100, -0.1528,
2.3591

■ 70.7380, -5.7868,
36.1868

■ 117.4940, 0.7425,
-4.8182

■ 63.1410, -6.9715,
42.8493

■ 125.0910, 1.9271,
-11.4808

■ 55.5440, -8.1562,
49.5119

■ 132.6880, 3.1118,
-18.1434

■ 48.0610, -8.9041,
56.0745

■ 140.1710, 3.8597,
-24.7060

■ 40.4640, -10.0888,
62.7371

■ 147.7680, 5.0444,
-31.3685

■ 34.9700, -10.8312,

■ 155.9520, 5.9397,

67.5553

-38.5459

■ 163.5490, 7.1243,
-45.2085

Harmonies

Analogous

The Analogous color harmony consists of three colors that are next to each other on the color wheel.



94.6470, 2.1460, 11.7106



94.1160, -2.5222, 15.6843



93.3780, -6.5954, 15.4545

Triad

The Triadic color harmony groups three colors that are evenly spaced from another and form a triangle on the color wheel.



94.1160, -2.5222, 15.6843



90.6590, -6.2409, -4.9629



90.7300, 9.5001, -13.7952

Complementary

The Complementary color scheme is a pair of colors which are on the opposite of each other on the color wheel.



94.1160, -2.5222, 15.6843



103.8840, 2.5222, -15.6843

Split Complementary

Split-complementary colors differ from the complementary color scheme. The scheme consists of three colors, the original color and two neighbors of the complement color.



89.2410, 7.7692, -18.6284



94.1160, -2.5222, 15.6843



89.1680, -1.5618, -12.4253

Square

The Square scheme is like the rectangle color scheme, but the four colors are evenly spaced on the color wheel.



94.1160, -2.5222, 15.6843



91.7310, -8.7414, 3.7439



88.8020, 3.5486, -18.2434



92.6710, 9.0362, -4.9735

Rectangle

The Rectangle color scheme consists of four colors that form a rectangle on the color wheel.



94.1160, -2.5222, 15.6843



92.9000, -8.3317, 12.3657



88.8020, 3.5486, -18.2434



90.3060, 9.2161, -16.0544

Sweetspot

The Sweet Spot groups the original color and five complimentary colors.



94.1160, -2.5222, 15.6843



138.1040, -1.0373, 6.0478



95.8410, 7.9664, 11.5404



69.9080, -0.4476, 3.5887



201.0000, 0.0000, 0.0000



74.0000, 0.0000, 0.0000

Same Dimension

The Same Dimension uses a secret algorithm to generate beautiful new colors.



94.1160, -2.5222, 15.6843



117.4160, -4.1491, 24.1912



99.6440, -6.7265, 10.8362



51.9080, -0.4476, 3.5887



37.4760, -11.5737, 72.3735



77.1590, -23.7424, 148.9506

Inverse Universe

The Inverse Universe completely reimagines the original color for something new.



94.1160, -2.5222, 15.6843



117.4160, -4.1491, 24.1912



98.3560, 6.7265, -10.8362



51.9080, -0.4476, 3.5887



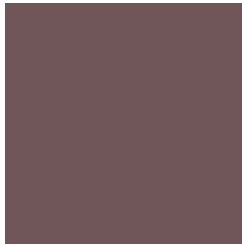
37.4760, -11.5737, 72.3735



77.1590, -23.7424, 148.9506

Previews

White Background



This preview shows how the YUV color 94.1160, -2.5222, 15.6843 looks on a white background.

Color Contrast Check

Large Text (above 18pt) WCAG AA ✓ Pass

Any Text WCAG AA ✓ Pass

Large Text (above 18pt) WCAG AAA ✓ Pass

Any Text WCAG AAA × Fail

Black Background



This preview shows how the YUV color 94.1160, -2.5222, 15.6843 looks on a black background.

Color Contrast Check

Large Text (above 18pt) WCAG AA ✓ Pass

Any Text WCAG AA × Fail

Large Text (above 18pt) WCAG AAA × Fail

Any Text WCAG AAA × Fail

If you want to check with other color combinations, try the [Color Contrast Checker](#).

YUV 94.1160, -2.5222, 15.6843

Background



This preview shows how black text looks on a background with the YUV color 94.1160, -2.5222, 15.6843.



This preview shows how white text looks on a background with the YUV color 94.1160, -2.5222,

Color Blindness Simulation

Color vision deficiency is a very complex topic, and I could not describe the different causes any better than Wikipedia does, so if you want to learn more, you should check out their [article about color blindness](#).

Dichromacy



Original Color

94.1160, -2.5222, 15.6843

Protanopia

92.7120, 0.1420, 1.1296

Deuteranopia

93.6590, -2.7899, 8.1921



Tritanopia

94.4580, -1.2118, 15.3843

Trichromacy



Original Color

94.1160, -2.5222, 15.6843

Protanomaly

93.5170, -0.7479, 6.5626

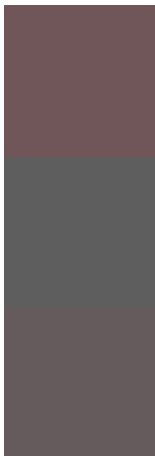
Deuteranomaly

93.9690, -2.9427, 10.5512

Tritanomaly

94.3440, -1.6486, 15.4843

Monochromacy



Original Color

94.1160, -2.5222, 15.6843

Achromatopsia

94.0000, 0.0000, 0.0000

Achromatomaly

94.1040, -1.0373, 6.0478

CSS Examples

Text

The CSS property to change the color of the text to YUV 94.1160, -2.5222, 15.6843 is called "color". The color property can be set on classes, ids or directly on the HTML element.

This example shows how text in the color `rgb(112, 86, 89)` looks like.

```
.text, #text, p{  
    color:rgb(112, 86, 89)  
}
```

If you want to add a text shadow in that color use the text-shadow property, you can generate a text shadow directly with our [CSS Text Shadow Generator](#).

Here you see how black text with a 4 pixel rgb(112, 86, 89) colored shadow looks like.

```
.shadow{ text-shadow: 4px 4px 2px rgb(112, 86, 89) }
```

Border

The CSS property to change the border of an element to YUV 94.1160, -2.5222, 15.6843 is called "border". The border property can be set on classes, ids or directly on the HTML element.

This example shows the color as border, it can be applied via the CSS property "border" or "border-color".

```
.border, #border, table{ border:4px solid rgb(112, 86, 89) }
```


If only the border color should be changed use the property border-color.

```
.border{ border-color:rgb(112, 86, 89) }
```

If you want to add a box shadow in that color use:

Here you see how a box with a 4 pixel rgb(112, 86, 89) colored shadow looks like.

```
.boxshadow{ -moz-box-shadow:4px 4px 4px  
4px rgb(112, 86, 89); -webkit-box-  
shadow:4px 4px 4px 4px rgb(112, 86, 89);  
box-shadow:4px 4px 4px 4px rgb(112, 86,  
89) }
```

Background

The CSS property to change the background color of an element to YUV 94.1160, -2.5222, 15.6843 is called "background". The background property can be set on classes, ids or directly on the HTML element.

```
.background, #background, body{  
background: rgb(112, 86, 89) }
```

If only the background color should be changed can be used:

```
.background{ background-color: rgb(112, 86,  
89) }
```

This example shows the color as background, it is applied via the CSS property "background".

To optimize and compress your CSS code, you can use our [online CSS compressor and optimizer](#) based on csstidy. If you want to create a linear or radial gradient as background or border, check our [CSS Gradient Generator](#).

Hey! You found this booklet interesting? Support Converting Colors with the new Membership Option!

The pro membership hides all ads, plus gives you double the colors in the color bucket, and more awesome pro features!

[Learn more, Memberships starting at \\$2.50/m!](#)

**Follow me
on Twitter!**

@ConvertingColor