

Converting Colors

YUV(94.7140, -2.8170, 16.9138)

Have a look what the booklet for
YUV(94.7140, -2.8170, 16.9138)
contains.

YUV(94.7140, -2.8170, 16.9138)	3
<i>Conversions</i>	4
<i>Details</i>	6
<i>Harmonies</i>	12
<i>Previews</i>	24
<i>Color Blindness Simulation</i>	28
<i>CSS Examples</i>	31

Color

**YUV(94.7140, -2.8170,
16.9138)**

Conversions

Conversions Part 1

Format	Color
Hex	725659
RGB	114, 86, 89
RGB Percent	45%, 34%, 35%
CMY	0.5529, 0.6627, 0.6510
CMYK	0.00, 0.25, 0.22, 0.55
HSL	354°, 14%, 39%
HSV	354°, 25%, 45%
XYZ	12.0704, 10.9543, 10.9294
YIQ	94.7140, 15.7250, 6.8690

Conversions

Conversions Part 2

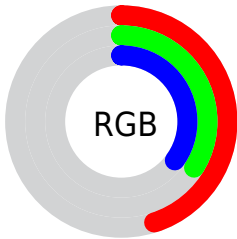
Format	Color
R_{YB}	114, 86, 89
Decimal	7493209
CIE _{Lab}	39.50, 12.08, 2.75
CIE _{LCh}	40, 12.392, 12.807
Yxy	10.9543, 0.3555, 0.3226
Android (android.graphics.Color)	4285683289 (0xFF725659)
YUV	94.7140, -2.8170, 16.9138
Hunter-Lab	33.0972, 7.1780, 3.5892

Details

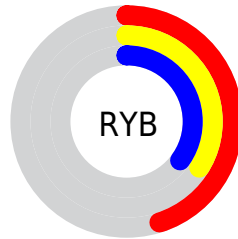
The YUV color **94.7140, -2.8170, 16.9138** is a dark color, and the websafe version is hex **666666**. A complement of this color would be **105.2860, 2.8170, -16.9138**, and the grayscale version is **95.0000, 0.0000, 0.0000**.

A 20% lighter version of the original color is **145.3120, -3.1118, 18.1434**, and **48.5180, -2.2274, 14.4547** is the 20% darker color. If you saturate the color by 10%, you get **87.1170, -4.0017, 23.5764**, and if you desaturate by 10%, it is **102.3110, -1.6323, 10.2513**.

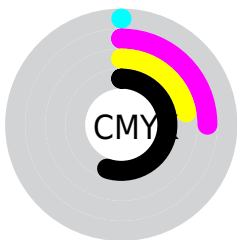
Distribution



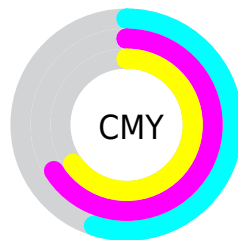
- Red (45%)
- Green (34%)
- Blue (35%)



- Red (45%)
- Yellow (34%)
- Blue (35%)



- Cyan (0%)
- Magenta (25%)
- Yellow (22%)
- Black (55%)



- Cyan (55%)
- Magenta (66%)
- Yellow (65%)

Brightness & Saturation Gradients

These gradients show how the YUV color 94.7140, -2.8170, 16.9138 changes by changing the brightness by 10 percent. The first figure shows a shift by +10% for each color and the second figure -10%.

Similar to the brightness gradients but the following saturation gradients show a change of the YUV color 94.7140, -2.8170, 16.9138 by changing the saturation by 10% instead.

■ 94.7140, -2.8170,
16.9138

■ 94.7140, -2.8170,
16.9138

■ 255.0000, 0.0000,
0.0000

■ 71.1160, -2.5222,
15.6843

■ 145.3120, -3.1118,
18.1434

■ 48.5180, -2.2274,
14.4547

■ 171.9100, -3.4066,
19.3729

■ 27.2190, -2.0800,
13.8399

■ 199.2090, -3.5540,
19.9877

■ 6.5780, -3.2430,
13.5251

■ 227.2090, -3.5540,
19.9877

■ 0.0000, 0.0000,
0.0000

■ 249.0330, -0.0163,
5.2331

■ 94.7140, -2.8170,
16.9138

■ 94.7140, -2.8170,
16.9138

■ 87.1170, -4.0017,
23.5764

■ 102.3110, -1.6323,
10.2513

■ 78.9330, -4.8970,
30.7538

■ 110.4950, -0.7370,
3.0739

■ 71.2220, -6.5184,
37.5163

■ 118.2060, 0.8844,
-3.6887

■ 63.0380, -7.4137,
44.6937

■ 126.3900, 1.7797,
-10.8660

■ 55.4410, -8.5984,
51.3562

■ 133.9870, 2.9644,
-17.5286

■ 47.8440, -9.7831,
58.0188

■ 141.5840, 4.1491,
-24.1912

■ 39.6600, -10.6784,
65.1962

■ 149.7680, 5.0444,
-31.3685

■ 35.4540, -11.5628,

■ 157.3650, 6.2291,

68.8848

-38.0311

■ 165.6630, 7.5611,
-45.3085

Harmonies

Analogous

The Analogous color harmony consists of three colors that are next to each other on the color wheel.



95.2450, 1.8512, 12.9401



94.7140, -2.8170, 16.9138



93.9760, -6.8902, 16.6840

Triad

The Triadic color harmony groups three colors that are evenly spaced from another and form a triangle on the color wheel.



94.7140, -2.8170, 16.9138



91.2460, -6.5303, -5.4777



91.2460, 10.2317, -15.1247

Complementary

The Complementary color scheme is a pair of colors which are on the opposite of each other on the color wheel.



94.7140, -2.8170, 16.9138



105.2860, 2.8170, -16.9138

Split Complementary

Split-complementary colors differ from the complementary color scheme. The scheme consists of three colors, the original color and two neighbors of the complement color.



89.6430, 8.0640, -19.8579



94.7140, -2.8170, 16.9138



89.5700, -1.2670, -13.6549

Square

The Square scheme is like the rectangle color scheme, but the four colors are evenly spaced on the color wheel.



94.7140, -2.8170, 16.9138



92.2040, -9.4676, 3.3291



89.2040, 3.8434, -19.4729



92.8990, 9.9098, -5.1734

Rectangle

The Rectangle color scheme consists of four colors that form a rectangle on the color wheel.



94.7140, -2.8170, 16.9138



93.3840, -9.0633, 13.6952



89.2040, 3.8434, -19.4729



90.8220, 9.9478, -17.3839

Sweetspot

The Sweet Spot groups the original color and five complimentary colors.



94.7140, -2.8170, 16.9138



141.1040, -1.0373, 6.0478



96.6670, 8.5452, 12.5700



69.9080, -0.4476, 3.5887



201.0000, 0.0000, 0.0000



74.0000, 0.0000, 0.0000

Same Dimension

The Same Dimension uses a secret algorithm to generate beautiful new colors.



94.7140, -2.8170, 16.9138



118.4270, -4.1545, 25.9355



100.8290, -7.3107, 11.5510



51.9080, -0.4476, 3.5887



37.3620, -12.0105, 72.4735



76.9310, -24.6160, 149.1505

Inverse Universe

The Inverse Universe completely reimagines the original color for something new.



94.7140, -2.8170, 16.9138



118.4270, -4.1545, 25.9355



99.1710, 7.3107, -11.5510



51.9080, -0.4476, 3.5887



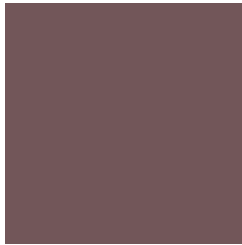
37.3620, -12.0105, 72.4735



76.9310, -24.6160, 149.1505

Previews

White Background



This preview shows how the YUV color 94.7140, -2.8170, 16.9138 looks on a white background.

Color Contrast Check

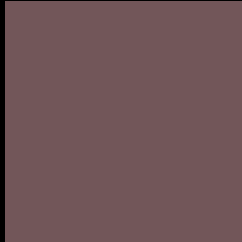
Large Text (above 18pt) WCAG AA ✓ Pass

Any Text WCAG AA ✓ Pass

Large Text (above 18pt) WCAG AAA ✓ Pass

Any Text WCAG AAA × Fail

Black Background



This preview shows how the YUV color 94.7140, -2.8170, 16.9138 looks on a black background.

Color Contrast Check

Large Text (above 18pt) WCAG AA ✓ Pass

Any Text WCAG AA × Fail

Large Text (above 18pt) WCAG AAA × Fail

Any Text WCAG AAA × Fail

If you want to check with other color combinations, try the [Color Contrast Checker](#).

YUV 94.7140, -2.8170, 16.9138

Background



This preview shows how black text looks on a background with the YUV color 94.7140, -2.8170, 16.9138.



This preview shows how white text looks on a background with the YUV color 94.7140, -2.8170,

Color Blindness Simulation

Color vision deficiency is a very complex topic, and I could not describe the different causes any better than Wikipedia does, so if you want to learn more, you should check out their [article about color blindness](#).

Dichromacy



Original Color

94.7140, -2.8170, 16.9138

Protanopia

93.5980, -0.2948, 1.2296

Deuteranopia

93.9580, -2.9373, 8.8068



Tritanopia

95.0560, -1.5066, 16.6139

Trichromacy



Original Color

94.7140, -2.8170, 16.9138

Protanomaly

93.8160, -0.8953, 7.1774

Deuteranomaly

94.5670, -3.2375, 11.7807

Tritanomaly

94.9420, -1.9434, 16.7139

Monochromacy



Original Color

94.7140, -2.8170, 16.9138

Achromatopsia

95.0000, 0.0000, 0.0000

Achromatomaly

95.1040, -1.0373, 6.0478

CSS Examples

Text

The CSS property to change the color of the text to YUV 94.7140, -2.8170, 16.9138 is called "color". The color property can be set on classes, ids or directly on the HTML element.

This example shows how text in the color `rgb(114, 86, 89)` looks like.

```
.text, #text, p{  
    color:rgb(114, 86, 89)  
}
```

If you want to add a text shadow in that color use the text-shadow property, you can generate a text shadow directly with our [CSS Text Shadow Generator](#).

Here you see how black text with a 4 pixel rgb(114, 86, 89) colored shadow looks like.

```
.shadow{ text-shadow: 4px 4px 2px rgb(114, 86, 89) }
```

Border

The CSS property to change the border of an element to YUV 94.7140, -2.8170, 16.9138 is called "border". The border property can be set on classes, ids or directly on the HTML element.

This example shows the color as border, it can be applied via the CSS property "border" or "border-color".

```
.border, #border, table{ border:4px solid rgb(114, 86, 89) }
```


If only the border color should be changed use the property `border-color`.

```
.border{ border-color:rgb(114, 86, 89) }
```

If you want to add a box shadow in that color use:

Here you see how a box with a 4 pixel `rgb(114, 86, 89)` colored shadow looks like.

```
.boxshadow{ -moz-box-shadow:4px 4px 4px  
4px rgb(114, 86, 89); -webkit-box-  
shadow:4px 4px 4px 4px rgb(114, 86, 89);  
box-shadow:4px 4px 4px 4px rgb(114, 86,  
89) }
```

Background

The CSS property to change the background color of an element to YUV 94.7140, -2.8170, 16.9138 is called "background". The background property can be set on classes, ids or directly on the HTML element.

```
.background, #background, body{  
background: rgb(114, 86, 89) }
```

If only the background color should be changed can be used:

```
.background{ background-color: rgb(114, 86,  
89) }
```

This example shows the color as background, it is applied via the CSS property "background".

To optimize and compress your CSS code, you can use our [online CSS compressor and optimizer](#) based on csstidy. If you want to create a linear or radial gradient as background or border, check our [CSS Gradient Generator](#).

Hey! You found this booklet interesting? Support Converting Colors with the new Membership Option!

The pro membership hides all ads, plus gives you double the colors in the color bucket, and more awesome pro features!

[Learn more, Memberships starting at \\$2.50/m!](#)

**Follow me
on Twitter!**

@ConvertingColor