

Converting Colors

YUV(95.5620, -2.2491, 21.4321)

Have a look what the booklet for
YUV(95.5620, -2.2491, 21.4321)
contains.

YUV(95.5620, -2.2491, 21.4321)	3
<i>Conversions</i>	4
<i>Details</i>	6
<i>Harmonies</i>	12
<i>Previews</i>	24
<i>Color Blindness Simulation</i>	28
<i>CSS Examples</i>	31

Color

**YUV(95.5620, -2.2491,
21.4321)**

Conversions

Conversions Part 1

Format	Color
Hex	78545B
RGB	120, 84, 91
RGB Percent	47%, 33%, 36%
CMY	0.5294, 0.6706, 0.6431
CMYK	0.00, 0.30, 0.24, 0.53
HSL	348°, 18%, 40%
HSV	348°, 30%, 47%
XYZ	12.8044, 11.0890, 11.3631
YIQ	95.5620, 19.2090, 9.8090

Conversions

Conversions Part 2

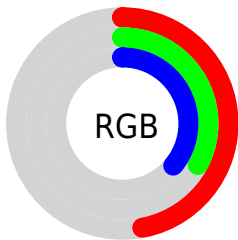
Format	Color
R _Y B	120, 84, 91
Decimal	7885915
CIE Lab	39.73, 16.10, 1.92
CIE LCh	40, 16.215, 6.816
Yxy	11.0890, 0.3632, 0.3145
Android (android.graphics.Color)	4286075995 (0xFF78545B)
YUV	95.5620, -2.2491, 21.4321
Hunter-Lab	33.3002, 10.3602, 3.0786

Details

The YUV color **95.5620, -2.2491, 21.4321** is a dark color, and the websafe version is hex **996666**. A complement of this color would be **108.4380, 2.2491, -21.4321**, and the grayscale version is **96.0000, 0.0000, 0.0000**.

A 20% lighter version of the original color is **146.4590, -2.6913, 23.2765**, and **48.3660, -1.6594, 18.9730** is the 20% darker color. If you saturate the color by 10%, you get **87.3780, -3.1444, 28.6095**, and if you desaturate by 10%, it is **103.7460, -1.3538, 14.2548**.

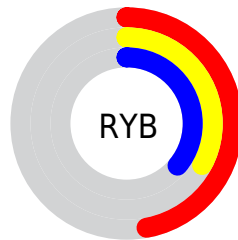
Distribution



Red (47%)

Green (33%)

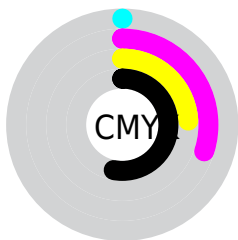
Blue (36%)



Red (47%)

Yellow (33%)

Blue (36%)

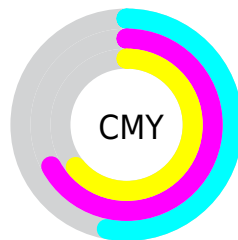


Cyan (0%)

Magenta (30%)

Yellow (24%)

Black (53%)



Cyan (53%)

Magenta (67%)

Yellow (64%)

Brightness & Saturation Gradients

These gradients show how the YUV color 95.5620, -2.2491, 21.4321 changes by changing the brightness by 10 percent. The first figure shows a shift by +10% for each color and the second figure -10%.

Similar to the brightness gradients but the following saturation gradients show a change of the YUV color 95.5620, -2.2491, 21.4321 by changing the saturation by 10% instead.

■ 95.5620, -2.2491,
21.4321

■ 95.5620, -2.2491,
21.4321

■ 255.0000, 0.0000,
0.0000

■ 71.9640, -1.9543,
20.2026

■ 146.4590, -2.6913,
23.2765

■ 48.3660, -1.6594,
18.9730

■ 173.0570, -2.9861,
24.5060

■ 26.8820, -0.9278,
17.6435

■ 200.4700, -2.6967,
25.0208

■ 8.4860, -3.6906,
17.1138

■ 227.8720, -2.4019,
23.7913

■ 0.0000, 0.0000,
0.0000

■ 247.5000, 1.7255,
6.5775

■ 95.5620, -2.2491,
21.4321

■ 95.5620, -2.2491,
21.4321

■ 87.3780, -3.1444,
28.6095

■ 103.7460, -1.3538,
14.2548

■ 79.3080, -3.6028,
35.6869

■ 111.8160, -0.8953,
7.1774

■ 71.1240, -4.4981,
42.8643

■ 120.0000, 0.0000,
0.0000

■ 62.9400, -5.3934,
50.0416

■ 128.1840, 0.8953,
-7.1774

■ 54.8700, -5.8519,
57.1190

■ 136.2540, 1.3538,
-14.2548

■ 46.6860, -6.7472,
64.2964

■ 144.4380, 2.2491,
-21.4321

■ 38.5020, -7.6425,
71.4737

■ 152.6220, 3.1444,
-28.6095

■ 160.6920, 3.6028,

-35.6869

■ 168.8760, 4.4981,
-42.8643

Harmonies

Analogous

The Analogous color harmony consists of three colors that are next to each other on the color wheel.



95.5380, 4.1718, 15.3142



95.5620, -2.2491, 21.4321



94.9550, -8.3588, 21.0875

Triad

The Triadic color harmony groups three colors that are evenly spaced from another and form a triangle on the color wheel.



95.5620, -2.2491, 21.4321



91.4480, -9.5879, -4.7779



90.0000, 13.3110, -22.8020

Complementary

The Complementary color scheme is a pair of colors which are on the opposite of each other on the color wheel.



95.5620, -2.2491, 21.4321



108.4380, 2.2491, -21.4321

Split Complementary

Split-complementary colors differ from the complementary color scheme. The scheme consists of three colors, the original color and two neighbors of the complement color.



87.5710, 10.5645, -28.5648



95.5620, -2.2491, 21.4321



89.3910, -3.1508, -16.1289

Square

The Square scheme is like the rectangle color scheme, but the four colors are evenly spaced on the color wheel.



95.5620, -2.2491, 21.4321



92.7160, -12.6780, 6.3881



87.8720, 4.0071, -25.3207



93.3760, 13.1256, -9.9768

Rectangle

The Rectangle color scheme consists of four colors that form a rectangle on the color wheel.



95.5620, -2.2491, 21.4321



94.2490, -10.9688, 18.1986



87.8720, 4.0071, -25.3207



89.1630, 12.7376, -25.5760

Sweetspot

The Sweet Spot groups the original color and five complimentary colors.



95.5620, -2.2491, 21.4321



146.4140, -1.1901, 8.4069



96.7750, 11.4499, 14.2293



72.9190, -0.4531, 5.3330



207.0000, 0.0000, 0.0000



79.0000, 0.0000, 0.0000

Same Dimension

The Same Dimension uses a secret algorithm to generate beautiful new colors.



95.5620, -2.2491, 21.4321



117.8840, -3.8868, 33.4277



101.2210, -8.4900, 16.4692



56.9080, -0.4476, 3.5887



40.1110, -7.9427, 74.4477



80.9340, -15.7435, 150.0249

Inverse Universe

The Inverse Universe completely reimagines the original color for something new.



95.5620, -2.2491, 21.4321



117.8840, -3.8868, 33.4277



102.7790, 8.4900, -16.4692



56.9080, -0.4476, 3.5887



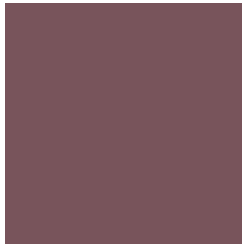
40.1110, -7.9427, 74.4477



80.9340, -15.7435, 150.0249

Previews

White Background



This preview shows how the YUV color 95.5620, -2.2491, 21.4321 looks on a white background.

Color Contrast Check

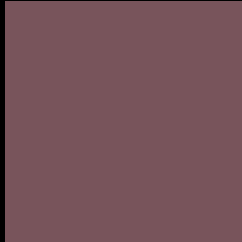
Large Text (above 18pt) WCAG AA ✓ Pass

Any Text WCAG AA ✓ Pass

Large Text (above 18pt) WCAG AAA ✓ Pass

Any Text WCAG AAA × Fail

Black Background



This preview shows how the YUV color 95.5620, -2.2491, 21.4321 looks on a black background.

Color Contrast Check

Large Text (above 18pt) WCAG AA ✓ Pass

Any Text WCAG AA × Fail

Large Text (above 18pt) WCAG AAA × Fail

Any Text WCAG AAA × Fail

If you want to check with other color combinations, try the [Color Contrast Checker](#).

YUV 95.5620, -2.2491, 21.4321

Background



This preview shows how black text looks on a background with the YUV color 95.5620, -2.2491, 21.4321.

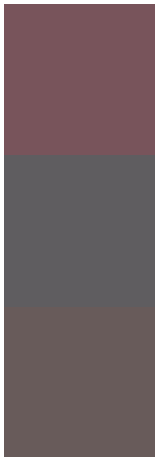


This preview shows how white text looks on a background with the YUV color 95.5620, -2.2491,

Color Blindness Simulation

Color vision deficiency is a very complex topic, and I could not describe the different causes any better than Wikipedia does, so if you want to learn more, you should check out their [article about color blindness](#).

Dichromacy



Original Color

95.5620, -2.2491, 21.4321

Protanopia

93.9400, 1.0156, 0.9296

Deuteranopia

94.7730, -2.3531, 8.0921



Tritanopia

95.4480, -2.6859, 21.5321

Trichromacy



Original Color

95.5620, -2.2491, 21.4321

Protanomaly

94.6420, -0.3165, 8.2070

Deuteranomaly

94.8060, -2.3694, 13.3251

Tritanomaly

95.4480, -2.6859, 21.5321

Monochromacy



Original Color

95.5620, -2.2491, 21.4321

Achromatopsia

96.0000, 0.0000, 0.0000

Achromatomaly

96.1150, -1.0427, 7.7921

CSS Examples

Text

The CSS property to change the color of the text to YUV 95.5620, -2.2491, 21.4321 is called "color". The color property can be set on classes, ids or directly on the HTML element.

This example shows how text in the color `rgb(120, 84, 91)` looks like.

```
.text, #text, p{  
    color:rgb(120, 84, 91)  
}
```

If you want to add a text shadow in that color use the text-shadow property, you can generate a text shadow directly with our [CSS Text Shadow Generator](#).

Here you see how black text with a 4 pixel rgb(120, 84, 91) colored shadow looks like.

```
.shadow{ text-shadow: 4px 4px 2px rgb(120, 84, 91) }
```

Border

The CSS property to change the border of an element to YUV 95.5620, -2.2491, 21.4321 is called "border". The border property can be set on classes, ids or directly on the HTML element.

This example shows the color as border, it can be applied via the CSS property "border" or "border-color".

```
.border, #border, table{ border:4px solid rgb(120, 84, 91) }
```


If only the border color should be changed use the property border-color.

```
.border{ border-color:rgb(120, 84, 91) }
```

If you want to add a box shadow in that color use:

Here you see how a box with a 4 pixel rgb(120, 84, 91) colored shadow looks like.

```
.boxshadow{ -moz-box-shadow:4px 4px 4px  
4px rgb(120, 84, 91); -webkit-box-  
shadow:4px 4px 4px 4px rgb(120, 84, 91);  
box-shadow:4px 4px 4px 4px rgb(120, 84,  
91) }
```

Background

The CSS property to change the background color of an element to YUV 95.5620, -2.2491, 21.4321 is called "background". The background property can be set on classes, ids or directly on the HTML element.

```
.background, #background, body{  
background: rgb(120, 84, 91) }
```

If only the background color should be changed can be used:

```
.background{ background-color: rgb(120, 84,  
91) }
```

This example shows the color as background, it is applied via the CSS property "background".

To optimize and compress your CSS code, you can use our [online CSS compressor and optimizer](#) based on csstidy. If you want to create a linear or radial gradient as background or border, check our [CSS Gradient Generator](#).

Hey! You found this booklet interesting? Support Converting Colors with the new Membership Option!

The pro membership hides all ads, plus gives you double the colors in the color bucket, and more awesome pro features!

[Learn more, Memberships starting at \\$2.50/m!](#)

**Follow me
on Twitter!**

@ConvertingColor