

Converting Colors

YUV(95.8470, -7.8126, 32.5832)

Have a look what the booklet for
YUV(95.8470, -7.8126, 32.5832)
contains.

YUV(95.8470, -7.8126, 32.5832)	3
<i>Conversions</i>	4
<i>Details</i>	6
<i>Harmonies</i>	12
<i>Previews</i>	24
<i>Color Blindness Simulation</i>	28
<i>CSS Examples</i>	31

Color

**YUV(95.8470, -7.8126,
32.5832)**

Conversions

Conversions Part 1

Format	Color
Hex	855050
RGB	133, 80, 80
RGB Percent	52%, 31%, 31%
CMY	0.4784, 0.6863, 0.6863
CMYK	0.00, 0.40, 0.40, 0.48
HSL	0°, 25%, 42%
HSV	0°, 40%, 52%
XYZ	13.9895, 11.3031, 9.0338
YIQ	95.8470, 31.5880, 11.2360

Conversions

Conversions Part 2

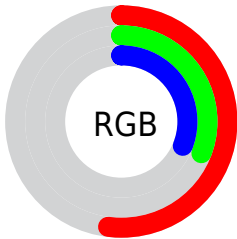
Format	Color
R_{YB}	133, 80, 80
Decimal	8736848
CIE _{Lab}	40.09, 22.24, 9.47
CIE _{LCh}	40, 24.173, 23.064
Yxy	11.3031, 0.4075, 0.3293
Android (android.graphics.Color)	4286926928 (0xFF855050)
YUV	95.8470, -7.8126, 32.5832
Hunter-Lab	33.6200, 15.4399, 7.6026

Details

The YUV color **95.8470, -7.8126, 32.5832** is a dark color, and the websafe version is hex **996666**. A complement of this color would be **117.1530, 7.8126, -32.5832**, and the grayscale version is **96.0000, 0.0000, 0.0000**.

A 20% lighter version of the original color is **147.2280, -8.9864, 35.7570**, and **48.2810, -6.0545, 28.6946** is the 20% darker color. If you saturate the color by 10%, you get **86.7340, -9.7289, 40.5753**, and if you desaturate by 10%, it is **104.9600, -5.8963, 24.5911**.

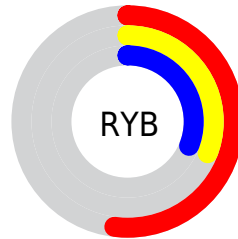
Distribution



Red (52%)

Green (31%)

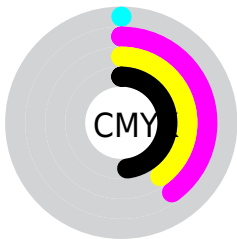
Blue (31%)



Red (52%)

Yellow (31%)

Blue (31%)

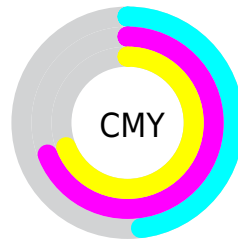


Cyan (0%)

Magenta (40%)

Yellow (40%)

Black (48%)



Cyan (48%)

Magenta (69%)

Yellow (69%)

Brightness & Saturation Gradients

These gradients show how the YUV color 95.8470, -7.8126, 32.5832 changes by changing the brightness by 10 percent. The first figure shows a shift by +10% for each color and the second figure -10%.

Similar to the brightness gradients but the following saturation gradients show a change of the YUV color 95.8470, -7.8126, 32.5832 by changing the saturation by 10% instead.

■ 95.8470, -7.8126,
32.5832

■ 95.8470, -7.8126,
32.5832

■ 255.0000, 0.0000,
0.0000

■ 71.3630, -7.0810,
31.2536

■ 147.2280, -8.9864,
35.7570

■ 48.2810, -6.0545,
28.6946

■ 173.8260, -9.2812,
36.9866

■ 25.3840, -5.6123,
26.8502

■ 201.4240, -9.5760,
38.2162

■ 10.8780, -4.8699,
22.0320

■ 224.0420, -6.9227,
27.1502

■ 0.0000, 0.0000,
0.0000

■ 244.2570, -3.0847,
9.4216

■ 95.8470, -7.8126,
32.5832

■ 95.8470, -7.8126,
32.5832

■ 86.7340, -9.7289,
40.5753

■ 104.9600, -5.8963,
24.5911

■ 76.9200, -11.7926,
49.1822

■ 114.7740, -3.8326,
15.9842

■ 67.8070, -13.7089,
57.1743

■ 123.8870, -1.9163,
7.9921

■ 58.6940, -15.6251,
65.1664

■ 133.0000, 0.0000,
0.0000

■ 48.8800, -17.6888,
73.7732

■ 142.8140, 2.0637,
-8.6069

■ 39.7670, -19.6051,
81.7653

■ 151.9270, 3.9800,
-16.5990

■ 161.0400, 5.8963,
-24.5911

■ 170.1530, 7.8126,

-32.5832

■ 179.9670, 9.8763,
-41.1901

Harmonies

Analogous

The Analogous color harmony consists of three colors that are next to each other on the color wheel.



97.2300, 1.3656, 28.7393



95.8470, -7.8126, 32.5832



94.8650, -15.2164, 27.3054

Triad

The Triadic color harmony groups three colors that are evenly spaced from another and form a triangle on the color wheel.



95.8470, -7.8126, 32.5832



88.4850, -9.1131, -17.0883



90.0300, 21.1842, -28.0903

Complementary

The Complementary color scheme is a pair of colors which are on the opposite of each other on the color wheel.



95.8470, -7.8126, 32.5832



117.1530, 7.8126, -32.5832

Split Complementary

Split-complementary colors differ from the complementary color scheme. The scheme consists of three colors, the original color and two neighbors of the complement color.



81.8870, 21.2547, -50.7669



95.8470, -7.8126, 32.5832



84.9370, 2.0031, -35.9017

Square

The Square scheme is like the rectangle color scheme, but the four colors are evenly spaced on the color wheel.



95.8470, -7.8126, 32.5832



91.6460, -16.5875, 0.3105



79.1440, 14.7190, -54.5003



95.2610, 17.6193, -4.6139

Rectangle

The Rectangle color scheme consists of four colors that form a rectangle on the color wheel.



95.8470, -7.8126, 32.5832



93.7240, -18.1049, 20.4131



79.1440, 14.7190, -54.5003



87.8010, 21.7901, -35.7825

Sweetspot

The Sweet Spot groups the original color and five complimentary colors.



95.8470, -7.8126, 32.5832



158.9800, -2.9481, 12.2955



101.8890, 15.3377, 27.2843



78.5880, -1.7689, 7.3773



214.0000, 0.0000, 0.0000



87.0000, 0.0000, 0.0000

Same Dimension

The Same Dimension uses a secret algorithm to generate beautiful new colors.



95.8470, -7.8126, 32.5832



114.8170, -12.2348, 51.0265



111.6960, -15.6261, 18.6836



61.7940, -0.8844, 3.6887



38.8700, -19.1629, 79.9210



0.8970, -0.4422, 1.8443

Inverse Universe

The Inverse Universe completely reimagines the original color for something new.



117.1530, 7.8126, -32.5832



148.1830, 12.2348, -51.0265



101.8910, 15.3367, -19.1984



64.2060, 0.8844, -3.6887



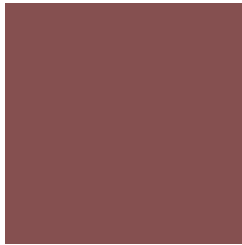
91.1300, 19.1629, -79.9210



2.1030, 0.4422, -1.8443

Previews

White Background



This preview shows how the YUV color 95.8470, -7.8126, 32.5832 looks on a white background.

Color Contrast Check

Large Text (above 18pt) WCAG AA ✓ Pass

Any Text WCAG AA ✓ Pass

Large Text (above 18pt) WCAG AAA ✓ Pass

Any Text WCAG AAA × Fail

Black Background



This preview shows how the YUV color 95.8470, -7.8126, 32.5832 looks on a black background.

Color Contrast Check

Large Text (above 18pt) WCAG AA ✓ Pass

Any Text WCAG AA × Fail

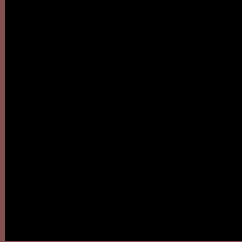
Large Text (above 18pt) WCAG AAA × Fail

Any Text WCAG AAA × Fail

If you want to check with other color combinations, try the [Color Contrast Checker](#).

YUV 95.8470, -7.8126, 32.5832

Background



This preview shows how black text looks on a background with the YUV color 95.8470, -7.8126, 32.5832.



This preview shows how white text looks on a background with the YUV color 95.8470, -7.8126,

Color Blindness Simulation

Color vision deficiency is a very complex topic, and I could not describe the different causes any better than Wikipedia does, so if you want to learn more, you should check out their [article about color blindness](#).

Dichromacy



Original Color

95.8470, -7.8126, 32.5832

Protanopia

94.9850, -3.9366, 2.6442

Deuteranopia

95.1990, -8.4791, 12.9805



Tritanopia

95.8300, -5.3392, 32.5981

Trichromacy



Original Color

95.8470, -7.8126, 32.5832

Protanomaly

95.5950, -5.7163, 13.5102

Deuteranomaly

95.3570, -8.0640, 19.8579

Tritanomaly

95.6020, -6.2128, 32.7980

Monochromacy



Original Color

95.8470, -7.8126, 32.5832

Achromatopsia

96.0000, 0.0000, 0.0000

Achromatomaly

95.6810, -2.8007, 11.6808

CSS Examples

Text

The CSS property to change the color of the text to YUV 95.8470, -7.8126, 32.5832 is called "color". The color property can be set on classes, ids or directly on the HTML element.

This example shows how text in the color `rgb(133, 80, 80)` looks like.

```
.text, #text, p{  
    color:rgb(133, 80, 80)  
}
```

If you want to add a text shadow in that color use the text-shadow property, you can generate a text shadow directly with our [CSS Text Shadow Generator](#).

Here you see how black text with a 4 pixel rgb(133, 80, 80) colored shadow looks like.

```
.shadow{ text-shadow: 4px 4px 2px rgb(133, 80, 80) }
```

Border

The CSS property to change the border of an element to YUV 95.8470, -7.8126, 32.5832 is called "border". The border property can be set on classes, ids or directly on the HTML element.

This example shows the color as border, it can be applied via the CSS property "border" or "border-color".

```
.border, #border, table{ border:4px solid rgb(133, 80, 80) }
```


If only the border color should be changed use the property `border-color`.

```
.border{ border-color:rgb(133, 80, 80) }
```

If you want to add a box shadow in that color use:

Here you see how a box with a 4 pixel `rgb(133, 80, 80)` colored shadow looks like.

```
.boxshadow{ -moz-box-shadow:4px 4px 4px  
4px rgb(133, 80, 80); -webkit-box-  
shadow:4px 4px 4px 4px rgb(133, 80, 80);  
box-shadow:4px 4px 4px 4px rgb(133, 80,  
80) }
```

Background

The CSS property to change the background color of an element to YUV 95.8470, -7.8126, 32.5832 is called "background". The background property can be set on classes, ids or directly on the HTML element.

```
.background, #background, body{  
background: rgb(133, 80, 80) }
```

If only the background color should be changed can be used:

```
.background{ background-color: rgb(133, 80,  
80) }
```

This example shows the color as background, it is applied via the CSS property "background".

To optimize and compress your CSS code, you can use our [online CSS compressor and optimizer](#) based on csstidy. If you want to create a linear or radial gradient as background or border, check our [CSS Gradient Generator](#).

Hey! You found this booklet interesting? Support Converting Colors with the new Membership Option!

The pro membership hides all ads, plus gives you double the colors in the color bucket, and more awesome pro features!

[Learn more, Memberships starting at \\$2.50/m!](#)

**Follow me
on Twitter!**

@ConvertingColor