

Converting Colors

YUV(98.5830, 3.1636, 105.6057)

Have a look what the booklet for
YUV(98.5830, 3.1636, 105.6057)
contains.

YUV(98.5830, 3.1636, 105.6057)	3
<i>Conversions</i>	4
<i>Details</i>	6
<i>Harmonies</i>	12
<i>Previews</i>	24
<i>Color Blindness Simulation</i>	28
<i>CSS Examples</i>	31

Color

**YUV(98.5830, 3.1636,
105.6057)**

Conversions

Conversions Part 1

Format	Color
Hex	DB2469
RGB	219, 36, 105
RGB Percent	86%, 14%, 41%
CMY	0.1412, 0.8588, 0.5882
CMYK	0.00, 0.84, 0.52, 0.14
HSL	337°, 72%, 50%
HSV	337°, 84%, 86%
XYZ	32.3941, 17.3417, 15.0045
YIQ	98.5830, 86.9190, 60.2550

Conversions

Conversions Part 2

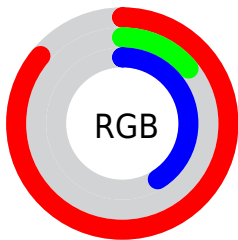
Format	Color
R _Y B	219, 36, 105
Decimal	14361705
CIE _{Lab}	48.69, 70.43, 8.23
CIE _{LCh}	49, 70.910, 6.662
Y _{xy}	17.3417, 0.5004, 0.2679
Android (android.graphics.Color)	4292551785 (0xFFDB2469)
Y _{UV}	98.5830, 3.1636, 105.6057
Hunter-Lab	41.6434, 65.9778, 7.7876

Details

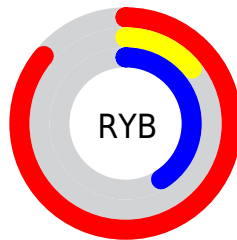
The YUV color **98.5830, 3.1636, 105.6057** is a dark color, and the websafe version is hex **CC0066**. The color can be described as dark washed rose. A complement of this color would be **156.4170, -3.1636, -105.6057**, and the grayscale version is **98.0000, 0.0000, 0.0000**.

A 20% lighter version of the original color is **154.4900, 0.7444, 88.1473**, and **53.5550, 2.1914, 90.7213** is the 20% darker color. If you saturate the color by 10%, you get **84.0730, 3.4150, 118.3310**, and if you desaturate by 10%, it is **113.0930, 2.9122, 92.8804**.

Distribution



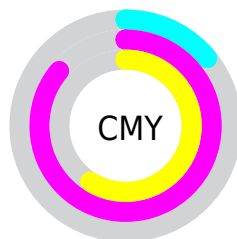
- Red (86%)
- Green (14%)
- Blue (41%)



- Red (86%)
- Yellow (14%)
- Blue (41%)



- Cyan (0%)
- Magenta (84%)
- Yellow (52%)
- Black (14%)



- Cyan (14%)
- Magenta (86%)
- Yellow (59%)

Brightness & Saturation Gradients

These gradients show how the YUV color 98.5830, 3.1636, 105.6057 changes by changing the brightness by 10 percent. The first figure shows a shift by +10% for each color and the second figure -10%.

Similar to the brightness gradients but the following saturation gradients show a change of the YUV color 98.5830, 3.1636, 105.6057 by changing the saturation by 10% instead.

■ 98.5830, 3.1636,
105.6057

■ 98.5830, 3.1636,
105.6057

■ 255.0000, 0.0000,
0.0000

■ 65.4460, 7.6681,
107.4799

■ 154.4900, 0.7444,
88.1473

■ 53.5550, 2.1914,
90.7213

■ 175.1780, 3.8562,
70.0039

■ 42.1910, -2.5592,
74.3775

■ 195.2790, 7.2575,
52.3753

■ 30.8270, -7.3097,
58.0337

■ 216.0810, 10.8061,
34.1320

■ 20.9730, -8.8607,
42.1197

■ 235.0420, 9.8393,
17.5032

■ 10.5790, -4.7224,
21.4172

■ 252.6520, 1.1576,

■ 0.0000, 0.0000,

2.0592

0.0000

■ 98.5830, 3.1636,
105.6057

■ 98.5830, 3.1636,
105.6057

■ 84.0730, 3.4150,
118.3310

■ 113.0930, 2.9122,
92.8804

■ 74.9430, 3.9721,
126.3380

■ 127.4890, 2.2239,
80.2551

■ 141.9990, 1.9725,
67.5299

■ 156.5090, 1.7211,
54.8046

■ 170.9050, 1.0328,
42.1793

■ 184.8280, 1.0708,
29.9688

■ 199.2240, 0.3826,
17.3436

■ 213.7340, 0.1311,
4.6183

■ 228.2440, -0.1203,
-8.1070

Harmonies

Analogous

The Analogous color harmony consists of three colors that are next to each other on the color wheel.



110.7590, 26.2478, 74.7564



98.5830, 3.1636, 105.6057



104.5420, -28.3682, 92.4867

Triad

The Triadic color harmony groups three colors that are evenly spaced from another and form a triangle on the color wheel.



98.5830, 3.1636, 105.6057



95.4350, -47.0495, -29.3225



104.4220, 59.9380, -91.5781

Complementary

The Complementary color scheme is a pair of colors which are on the opposite of each other on the color wheel.



98.5830, 3.1636, 105.6057



156.4170, -3.1636, -105.6057

Split Complementary

Split-complementary colors differ from the complementary color scheme. The scheme consists of three colors, the original color and two neighbors of the complement color.



103.9710, 40.4403, -91.1826



98.5830, 3.1636, 105.6057



89.0030, -11.8335, -78.0556

Square

The Square scheme is like the rectangle color scheme, but the four colors are evenly spaced on the color wheel.



98.5830, 3.1636, 105.6057



107.5380, -53.0162, 17.9452



97.3590, 15.1060, -85.3838



96.7570, 68.6468, -84.8559

Rectangle

The Rectangle color scheme consists of four colors that form a rectangle on the color wheel.



98.5830, 3.1636, 105.6057



106.1180, -52.3162, 73.5645



97.3590, 15.1060, -85.3838



105.0430, 54.7018, -92.1227

Sweetspot

The Sweet Spot groups the original color and five complimentary colors.



98.5830, 3.1636, 105.6057



212.8720, 1.0491, 36.9463



90.6490, 63.2770, 51.1738



102.3710, 0.8031, 22.4766



0.0000, 0.0000, 0.0000



128.0000, 0.0000, 0.0000

Same Dimension

The Same Dimension uses a secret algorithm to generate beautiful new colors.



98.5830, 3.1636, 105.6057



87.1890, 4.3438, 147.1702



103.0440, -33.0527, 101.6934



102.7450, 0.1257, 6.3626



59.1370, 2.8905, 99.8579



15.6920, 0.6448, 26.5801

Inverse Universe

The Inverse Universe completely reimagines the original color for something new.



98.5830, 3.1636, 105.6057



87.1890, 4.3438, 147.1702



151.9560, 33.0527, -101.6934



102.7450, 0.1257, 6.3626



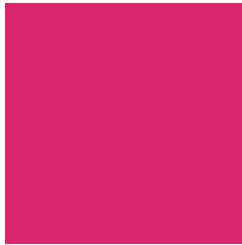
59.1370, 2.8905, 99.8579



15.6920, 0.6448, 26.5801

Previews

White Background



This preview shows how the YUV color 98.5830, 3.1636, 105.6057 looks on a white background.

Color Contrast Check

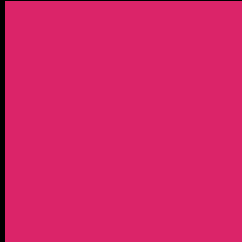
Large Text (above 18pt) WCAG AA ✓ Pass

Any Text WCAG AA ✓ Pass

Large Text (above 18pt) WCAG AAA ✓ Pass

Any Text WCAG AAA × Fail

Black Background



This preview shows how the YUV color 98.5830, 3.1636, 105.6057 looks on a black background.

Color Contrast Check

Large Text (above 18pt) WCAG AA ✓ Pass

Any Text WCAG AA × Fail

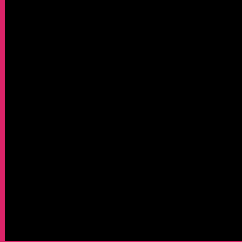
Large Text (above 18pt) WCAG AAA × Fail

Any Text WCAG AAA × Fail

If you want to check with other color combinations, try the [Color Contrast Checker](#).

YUV 98.5830, 3.1636, 105.6057

Background



This preview shows how black text looks on a background with the YUV color 98.5830, 3.1636, 105.6057.



This preview shows how white text looks on a background with the YUV color 98.5830, 3.1636, 105.6057.

Color Blindness Simulation

Color vision deficiency is a very complex topic, and I could not describe the different causes any better than Wikipedia does, so if you want to learn more, you should check out their [article about color blindness](#).

Dichromacy



Original Color

98.5830, 3.1636, 105.6057

Protanopia

116.7400, 14.4252, -6.7880

Deuteranopia

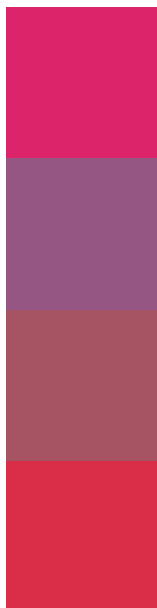
117.0530, -10.3791, 15.7395



Tritanopia

101.4490, -23.8854, 101.3382

Trichromacy



Original Color

98.5830, 3.1636, 105.6057

Protanomaly

109.9670, 10.3693, 34.2319

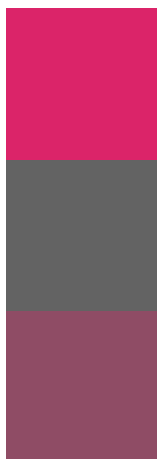
Deuteranomaly

110.2280, -5.5354, 48.9120

Tritanomaly

100.3920, -13.9973, 103.1422

Monochromacy



Original Color

98.5830, 3.1636, 105.6057

Achromatopsia

99.0000, 0.0000, 0.0000

Achromatomaly

98.8830, 1.0437, 38.6906

CSS Examples

Text

The CSS property to change the color of the text to YUV 98.5830, 3.1636, 105.6057 is called "color". The color property can be set on classes, ids or directly on the HTML element.

This example shows how text in the color `rgb(219, 36, 105)` looks like.

```
.text, #text, p{  
    color:rgb(219, 36, 105)  
}
```

If you want to add a text shadow in that color use the text-shadow property, you can generate a text shadow directly with our [CSS Text Shadow Generator](#).

Here you see how black text with a 4 pixel rgb(219, 36, 105) colored shadow looks like.

```
.shadow{ text-shadow: 4px 4px 2px rgb(219, 36, 105) }
```

Border

The CSS property to change the border of an element to YUV 98.5830, 3.1636, 105.6057 is called "border". The border property can be set on classes, ids or directly on the HTML element.

This example shows the color as border, it can be applied via the CSS property "border" or "border-color".

```
.border, #border, table{ border:4px solid rgb(219, 36, 105) }
```


If only the border color should be changed use the property border-color.

```
.border{ border-color:rgb(219, 36, 105) }
```

If you want to add a box shadow in that color use:

Here you see how a box with a 4 pixel rgb(219, 36, 105) colored shadow looks like.

```
.boxshadow{ -moz-box-shadow:4px 4px 4px  
4px rgb(219, 36, 105); -webkit-box-  
shadow:4px 4px 4px 4px rgb(219, 36, 105);  
box-shadow:4px 4px 4px 4px rgb(219, 36,  
105) }
```

Background

The CSS property to change the background color of an element to YUV 98.5830, 3.1636, 105.6057 is called "background". The background property can be set on classes, ids or directly on the HTML element.

```
.background, #background, body{  
background: rgb(219, 36, 105) }
```

If only the background color should be changed can be used:

```
.background{ background-color: rgb(219, 36,  
105) }
```

This example shows the color as background, it is applied via the CSS property "background".

To optimize and compress your CSS code, you can use our [online CSS compressor and optimizer](#) based on csstidy. If you want to create a linear or radial gradient as background or border, check our [CSS Gradient Generator](#).

Hey! You found this booklet interesting? Support Converting Colors with the new Membership Option!

The pro membership hides all ads, plus gives you double the colors in the color bucket, and more awesome pro features!

[Learn more, Memberships starting at \\$2.50/m!](#)

**Follow me
on Twitter!**

@ConvertingColor