

Converting Colors

YUV(99.3010, 0.8376, 104.9760)

Have a look what the booklet for
YUV(99.3010, 0.8376, 104.9760)
contains.

YUV(99.3010, 0.8376, 104.9760)	3
<i>Conversions</i>	4
<i>Details</i>	6
<i>Harmonies</i>	12
<i>Previews</i>	24
<i>Color Blindness Simulation</i>	28
<i>CSS Examples</i>	31

Color

**YUV(99.3010, 0.8376,
104.9760)**

Conversions

Conversions Part 1

Format	Color
Hex	DB2665
RGB	219, 38, 101
RGB Percent	86%, 15%, 40%
CMY	0.1412, 0.8510, 0.6039
CMYK	0.00, 0.83, 0.54, 0.14
HSL	339°, 72%, 50%
HSV	339°, 83%, 86%
XYZ	32.2555, 17.3859, 13.9677
YIQ	99.3010, 87.6530, 57.9650

Conversions

Conversions Part 2

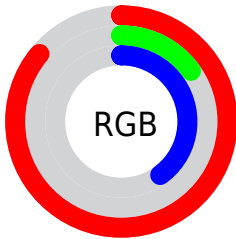
Format	Color
R_{YB}	219, 38, 101
Decimal	14362213
CIE _{Lab}	48.74, 69.70, 10.76
CIE _{LCh}	49, 70.521, 8.774
Yxy	17.3859, 0.5071, 0.2733
Android (android.graphics.Color)	4292552293 (0xFFDB2665)
YUV	99.3010, 0.8376, 104.9760
Hunter-Lab	41.6964, 65.1154, 9.3262

Details

The YUV color **99.3010, 0.8376, 104.9760** is a dark color, and the websafe version is hex **CC3366**. The color can be described as dark washed rose. A complement of this color would be **157.6990, -0.8376, -104.9760**, and the grayscale version is **99.0000, 0.0000, 0.0000**.

A 20% lighter version of the original color is **154.6210, -1.2922, 88.0324**, and **53.2130, 0.8810, 91.0212** is the 20% darker color. If you saturate the color by 10%, you get **84.7910, 1.0890, 117.7013**, and if you desaturate by 10%, it is **113.8110, 0.5862, 92.2508**.

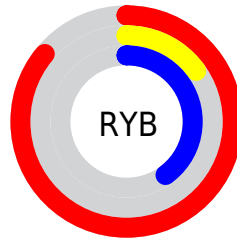
Distribution



Red (86%)

Green (15%)

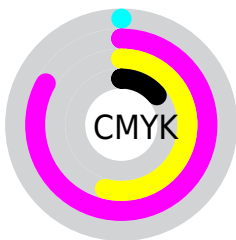
Blue (40%)



Red (86%)

Yellow (15%)

Blue (40%)

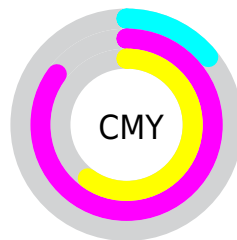


Cyan (0%)

Magenta (83%)

Yellow (54%)

Black (14%)



Cyan (14%)

Magenta (85%)

Yellow (60%)

Brightness & Saturation Gradients

These gradients show how the YUV color 99.3010, 0.8376, 104.9760 changes by changing the brightness by 10 percent. The first figure shows a shift by +10% for each color and the second figure -10%.

Similar to the brightness gradients but the following saturation gradients show a change of the YUV color 99.3010, 0.8376, 104.9760 by changing the saturation by 10% instead.

■ 99.3010, 0.8376,
104.9760

■ 99.3010, 0.8376,
104.9760

■ 255.0000, 0.0000,
0.0000

■ 64.9900, 5.9209,
107.8798

■ 154.6210, -1.2922,
88.0324

■ 53.2130, 0.8810,
91.0212

■ 175.1950, 1.3829,
69.9890

■ 41.8490, -3.8696,
74.6774

■ 195.4100, 5.2209,
52.2604

■ 30.3710, -9.0569,
58.4336

■ 215.6250, 9.0589,
34.5319

■ 20.6740, -8.7133,
41.5049

■ 235.6290, 9.5499,
16.9884

■ 10.5790, -4.7224,
21.4172

■ 253.2390, 0.8682,

■ 0.0000, 0.0000,

1.5444

0.0000

■ 99.3010, 0.8376,
104.9760

■ 99.3010, 0.8376,
104.9760

■ 84.7910, 1.0890,
117.7013

■ 113.8110, 0.5862,
92.2508

■ 74.1450, 0.9145,
127.0378

■ 128.4350, 0.7715,
79.4255

■ 142.9450, 0.5201,
66.7002

■ 157.4550, 0.2687,
53.9750

■ 171.3780, 0.3066,
41.7645

■ 186.0020, 0.4920,
28.9392

■ 200.5120, 0.2406,
16.2140

■ 215.0220, -0.0108,
3.4887

■ 229.5320, -0.2623,
-9.2366

Harmonies

Analogous

The Analogous color harmony consists of three colors that are next to each other on the color wheel.



109.7270, 24.7846, 77.4154



99.3010, 0.8376, 104.9760



105.2490, -30.6888, 90.1126

Triad

The Triadic color harmony groups three colors that are evenly spaced from another and form a triangle on the color wheel.



99.3010, 0.8376, 104.9760



94.2280, -46.4544, -33.5260



104.6500, 60.8115, -91.7781

Complementary

The Complementary color scheme is a pair of colors which are on the opposite of each other on the color wheel.



99.3010, 0.8376, 104.9760



157.6990, -0.8376, -104.9760

Split Complementary

Split-complementary colors differ from the complementary color scheme. The scheme consists of three colors, the original color and two neighbors of the complement color.



104.4270, 42.1875, -91.5825



99.3010, 0.8376, 104.9760



89.5730, -9.6495, -78.5555

Square

The Square scheme is like the rectangle color scheme, but the four colors are evenly spaced on the color wheel.



99.3010, 0.8376, 104.9760



107.2280, -52.8634, 15.5860



98.4020, 16.5638, -86.2986



96.0560, 68.4994, -84.2411

Rectangle

The Rectangle color scheme consists of four colors that form a rectangle on the color wheel.



99.3010, 0.8376, 104.9760



106.9820, -52.7421, 70.1758



98.4020, 16.5638, -86.2986



105.2710, 55.5754, -92.3227

Sweetspot

The Sweet Spot groups the original color and five complimentary colors.



99.3010, 0.8376, 104.9760



212.6440, 0.1755, 37.1462



93.9160, 61.6664, 54.4477



102.2570, 0.3663, 22.5766



0.0000, 0.0000, 0.0000



128.0000, 0.0000, 0.0000

Same Dimension

The Same Dimension uses a secret algorithm to generate beautiful new colors.



99.3010, 0.8376, 104.9760



88.2660, 0.8549, 146.2257



107.9680, -34.4942, 97.3751



102.7450, 0.1257, 6.3626



58.5670, 0.7065, 100.3577



15.5780, 0.2080, 26.6801

Inverse Universe

The Inverse Universe completely reimagines the original color for something new.



99.3010, 0.8376, 104.9760



88.2660, 0.8549, 146.2257



149.0320, 34.4942, -97.3751



102.7450, 0.1257, 6.3626



58.5670, 0.7065, 100.3577



15.5780, 0.2080, 26.6801

Previews

White Background



This preview shows how the YUV color 99.3010, 0.8376, 104.9760 looks on a white background.

Color Contrast Check

Large Text (above 18pt) WCAG AA ✓ Pass

Any Text WCAG AA ✓ Pass

Large Text (above 18pt) WCAG AAA ✓ Pass

Any Text WCAG AAA × Fail

Black Background



This preview shows how the YUV color 99.3010, 0.8376, 104.9760 looks on a black background.

Color Contrast Check

Large Text (above 18pt) WCAG AA ✓ Pass

Any Text WCAG AA × Fail

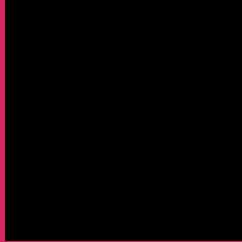
Large Text (above 18pt) WCAG AAA × Fail

Any Text WCAG AAA × Fail

If you want to check with other color combinations, try the [Color Contrast Checker](#).

YUV 99.3010, 0.8376, 104.9760

Background



This preview shows how black text looks on a background with the YUV color 99.3010, 0.8376, 104.9760.

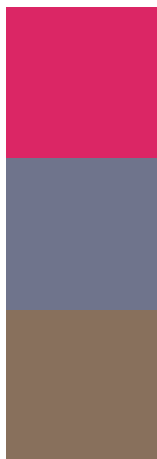


This preview shows how white text looks on a background with the YUV color 99.3010, 0.8376, 104.9760.

Color Blindness Simulation

Color vision deficiency is a very complex topic, and I could not describe the different causes any better than Wikipedia does, so if you want to learn more, you should check out their [article about color blindness](#).

Dichromacy



Original Color

99.3010, 0.8376, 104.9760

Protanopia

117.2410, 11.2202, -5.4734

Deuteranopia

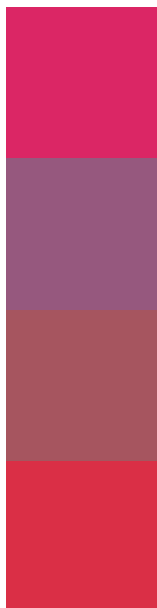
116.8960, -12.2737, 16.7542



Tritanopia

101.4490, -23.8854, 101.3382

Trichromacy



Original Color

99.3010, 0.8376, 104.9760

Protanomaly

110.8700, 7.4591, 34.3170

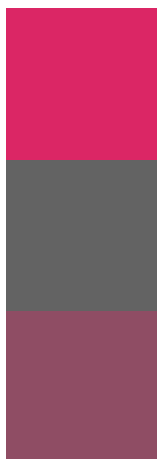
Deuteranomaly

110.3590, -7.5720, 48.7972

Tritanomaly

100.7510, -15.1602, 102.8274

Monochromacy



Original Color

99.3010, 0.8376, 104.9760

Achromatopsia

99.0000, 0.0000, 0.0000

Achromatomaly

99.3560, 0.3175, 38.2758

CSS Examples

Text

The CSS property to change the color of the text to YUV 99.3010, 0.8376, 104.9760 is called "color". The color property can be set on classes, ids or directly on the HTML element.

This example shows how text in the color `rgb(219, 38, 101)` looks like.

```
.text, #text, p{  
    color:rgb(219, 38, 101)  
}
```

If you want to add a text shadow in that color use the text-shadow property, you can generate a text shadow directly with our [CSS Text Shadow Generator](#).

Here you see how black text with a 4 pixel rgb(219, 38, 101) colored shadow looks like.

```
.shadow{ text-shadow: 4px 4px 2px rgb(219, 38, 101) }
```

Border

The CSS property to change the border of an element to YUV 99.3010, 0.8376, 104.9760 is called "border". The border property can be set on classes, ids or directly on the HTML element.

This example shows the color as border, it can be applied via the CSS property "border" or "border-color".

```
.border, #border, table{ border:4px solid rgb(219, 38, 101) }
```


If only the border color should be changed use the property border-color.

```
.border{ border-color:rgb(219, 38, 101) }
```

If you want to add a box shadow in that color use:

Here you see how a box with a 4 pixel rgb(219, 38, 101) colored shadow looks like.

```
.boxshadow{ -moz-box-shadow:4px 4px 4px  
4px rgb(219, 38, 101); -webkit-box-  
shadow:4px 4px 4px 4px rgb(219, 38, 101);  
box-shadow:4px 4px 4px 4px rgb(219, 38,  
101) }
```

Background

The CSS property to change the background color of an element to YUV 99.3010, 0.8376, 104.9760 is called "background". The background property can be set on classes, ids or directly on the HTML element.

```
.background, #background, body{  
background: rgb(219, 38, 101) }
```

If only the background color should be changed can be used:

```
.background{ background-color: rgb(219, 38,  
101) }
```

This example shows the color as background, it is applied via the CSS property "background".

To optimize and compress your CSS code, you can use our [online CSS compressor and optimizer](#) based on csstidy. If you want to create a linear or radial gradient as background or border, check our [CSS Gradient Generator](#).

Hey! You found this booklet interesting? Support Converting Colors with the new Membership Option!

The pro membership hides all ads, plus gives you double the colors in the color bucket, and more awesome pro features!

[Learn more, Memberships starting at \\$2.50/m!](#)

**Follow me
on Twitter!**

@ConvertingColor