

Converting Colors

$Y_{xy}(10.4296, 0.3722, 0.3683)$

Have a look what the booklet for
Yxy(10.4296, 0.3722, 0.3683)
contains.

Yxy(10.4986, 0.3709, 0.3684)	3
Conversions	4
Details	6
Harmonies	12
Previews	24
Color Blindness Simulation	27
CSS Examples	30

Color

$Yxy(10.4986, 0.3709, 0.3684)$

Conversions

Conversions Part 1

Format	Color
Hex	6A5847
RGB	106, 88, 71
RGB Percent	42%, 35%, 28%
CMY	0.5844, 0.6549, 0.7216
CMYK	0.00, 0.17, 0.33, 0.58
HSL	29°, 20%, 35%
HSV	29°, 33%, 42%
XYZ	10.5698, 10.4986, 7.4294
YIQ	91.4440, 16.1850, -1.4710

Conversions

Conversions Part 2

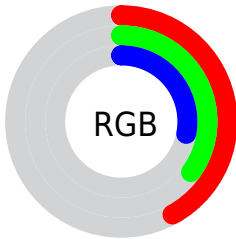
Format	Color
RYB	106, 104, 71
Decimal	6969415
CIELab	38.72, 4.57, 12.62
CIELCh	39, 13.425, 70.101
Yxy	10.4986, 0.3709, 0.3684
Android (android.graphics.Color)	4285159495 (0xFF6A5847)
YUV	91.4440, -10.0789, 12.7656
Hunter-Lab	32.4015, 1.5265, 9.0864

Details

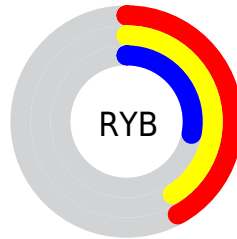
The Yxy color **10.4986, 0.3709, 0.3684** is a dark color, and the websafe version is hex **666666**. A complement of this color would be **9.5205, 0.2634, 0.2859**, and the grayscale version is **10.5890, 0.3127, 0.3290**.

A 20% lighter version of the original color is **26.7780, 0.3559, 0.3593**, and **2.7064, 0.4053, 0.3909** is the 20% darker color. If you saturate the color by 10%, you get **9.5136, 0.3933, 0.3807**, and if you desaturate by 10%, it is **11.5751, 0.3508, 0.3560**.

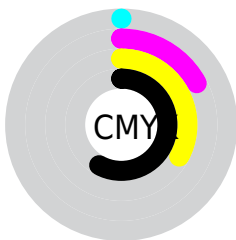
Distribution



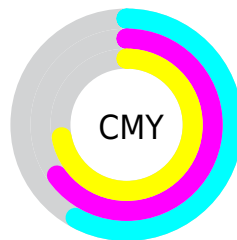
- Red (42%)
- Green (35%)
- Blue (28%)



- Red (42%)
- Yellow (41%)
- Blue (28%)



- Cyan (0%)
- Magenta (17%)
- Yellow (33%)
- Black (58%)



- Cyan (58%)
- Magenta (65%)
- Yellow (72%)

Brightness & Saturation Gradients

These gradients show how the Yxy color 10.4986, 0.3709, 0.3684 changes by changing the brightness by 10 percent. The first figure shows a shift by +10% for each color and the second figure -10%.

Similar to the brightness gradients but the following saturation gradients show a change of the Yxy color 10.4986, 0.3709, 0.3684 by changing the saturation by 10% instead.

■ 10.4986, 0.3709,
0.3684

■ 10.4986, 0.3709,
0.3684

194.1946, 0.3346,
0.3444

■ 5.7308, 0.3838,
0.3764

■ 26.7292, 0.3553,
0.3583

■ 2.6821, 0.4039,
0.3883

■ 38.9607, 0.3503,
0.3550

■ 0.9681, 0.4786,
0.4439

■ 54.4490, 0.3463,
0.3523

■ 0.0000, 0.0000,
0.0000

■ 73.5783, 0.3430,
0.3502

■ 96.7332, 0.3404,
0.3484

124.2979, 0.3382,

0.3469

156.6569, 0.3363,
0.3456

■ 10.4986, 0.3709,
0.3684

■ 10.4986, 0.3709,
0.3684

■ 9.5136, 0.3933,
0.3807

■ 11.5751, 0.3508,
0.3560

■ 8.6160, 0.4177,
0.3922

■ 12.7443, 0.3329,
0.3439

■ 7.8034, 0.4437,
0.4022

■ 14.0090, 0.3171,
0.3324

■ 7.0728, 0.4703,
0.4096

■ 15.3716, 0.3033,
0.3215

■ 6.4209, 0.4962,
0.4133

■ 16.8344, 0.2911,
0.3114

■ 5.8437, 0.5201,
0.4127

■ 18.3994, 0.2805,
0.3021

■ 5.4776, 0.5373,
0.4116

■ 20.0687, 0.2712,
0.2935

■ 21.8445, 0.2631,
0.2856

■ 23.7286, 0.2559,
0.2784

Harmonies

Analogous

The Analogous color harmony consists of three colors that are next to each other on the color wheel.



10.4986, 0.3729, 0.3453



10.4986, 0.3709, 0.3684



10.4986, 0.3527, 0.3825

Triad

The Triadic color harmony groups three colors that are evenly spaced from another and form a triangle on the color wheel.



10.4986, 0.3709, 0.3684



10.4986, 0.2690, 0.3365



10.4986, 0.2988, 0.2822

Complementary

The Complementary color scheme is a pair of colors which are on the opposite of each other on the color wheel.



10.4986, 0.3709, 0.3684



9.5205, 0.2634, 0.2859

Split Complementary

Split-complementary colors differ from the complementary color scheme. The scheme consists of three colors, the original color and two neighbors of the complement color.



10.4986, 0.2726, 0.2783



10.4986, 0.3709, 0.3684



10.4986, 0.2560, 0.3079

Square

The Square scheme is like the rectangle color scheme, but the four colors are evenly spaced on the color wheel.



10.4986, 0.3709, 0.3684



10.4986, 0.2937, 0.3644



10.4986, 0.2573, 0.2871



10.4986, 0.3302, 0.2971

Rectangle

The Rectangle color scheme consists of four colors that form a rectangle on the color wheel.



10.4986, 0.3709, 0.3684



10.4986, 0.3344, 0.3838



10.4986, 0.2573, 0.2871



10.4986, 0.2892, 0.2796

Sweetspot

The Sweet Spot groups the original color and five complimentary colors.



10.4991, 0.3709, 0.3684



22.9631, 0.3283, 0.3407



8.2918, 0.3469, 0.2876



5.3276, 0.3300, 0.3419



55.4222, 0.3127, 0.3290



5.9254, 0.3127, 0.3290

Same Dimension

The Same Dimension uses a secret algorithm to generate beautiful new colors.



10.4991, 0.3709, 0.3684



17.0188, 0.3888, 0.3784



13.7046, 0.3597, 0.4050



3.3370, 0.3262, 0.3392



6.7317, 0.5389, 0.4103



32.5733, 0.5474, 0.4036

Inverse Universe

The Inverse Universe completely reimagines the original color for something new.



9.5205, 0.2634, 0.2859



14.9999, 0.2510, 0.2733



6.9600, 0.2580, 0.2397



3.2583, 0.2997, 0.3186



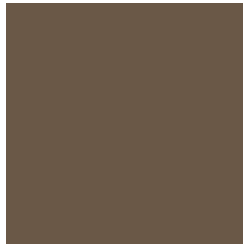
4.5518, 0.1803, 0.1689



21.4476, 0.1777, 0.1595

Previews

White Background



This preview shows how the Yxy color 10.4986, 0.3709, 0.3684 looks on a white background.

Color Contrast Check

Large Text (above 18pt) WCAG AA ✓ Pass

Any Text WCAG AA ✓ Pass

Large Text (above 18pt) WCAG AAA ✓ Pass

Any Text WCAG AAA × Fail

Black Background



This preview shows how the Yxy color 10.4986, 0.3709, 0.3684 looks on a black background.

Color Contrast Check

Large Text (above 18pt) WCAG AA ✓ Pass

Any Text WCAG AA × Fail

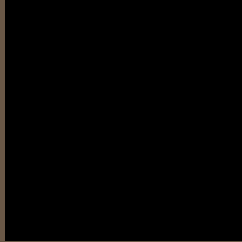
Large Text (above 18pt) WCAG AAA × Fail

Any Text WCAG AAA × Fail

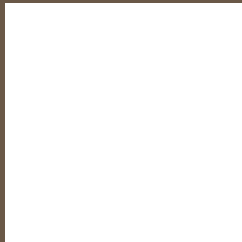
If you want to check with other color combinations, try the [Color Contrast Checker](#).

Yxy 10.4986, 0.3709, 0.3684

Background



This preview shows how black text looks on a background with the Yxy color 10.4986, 0.3709, 0.3684.

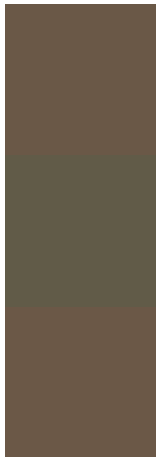


This preview shows how white text looks on a background with the Yxy color 10.4986, 0.3709, 0.3684.

Color Blindness Simulation

Color vision deficiency is a very complex topic, and I could not describe the different causes any better than Wikipedia does, so if you want to learn more, you should check out their [article about color blindness](#).

Dichromacy



Original Color

10.4986, 0.3709, 0.3684

Protanopia

10.4914, 0.3518, 0.3751

Deuteranopia

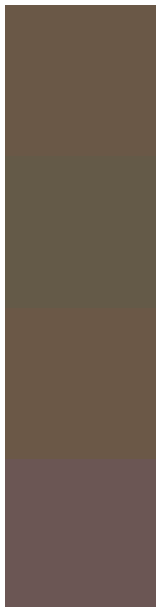
10.5602, 0.3727, 0.3681



Tritanopia

10.4579, 0.3406, 0.3134

Trichromacy



Original Color

10.4986, 0.3709, 0.3684

Protanomaly

10.4895, 0.3576, 0.3720

Deuteranomaly

10.5602, 0.3727, 0.3681

Tritanomaly

10.4215, 0.3519, 0.3337

Monochromacy



Original Color

10.4986, 0.3709, 0.3684

Achromatopsia

10.4616, 0.3127, 0.3290

Achromatomaly

10.4392, 0.3317, 0.3435

CSS Examples

Text

The CSS property to change the color of the text to Yxy 10.4986, 0.3709, 0.3684 is called "color". The color property can be set on classes, ids or directly on the HTML element.

This example shows how text in the color `rgb(106, 88, 71)` looks like.

```
.text, #text, p{  
    color:rgb(106, 88, 71)  
}
```

If you want to add a text shadow in that color use the text-shadow property, you can generate a text shadow directly with our [CSS Text Shadow Generator](#).

Here you see how black text with a 4 pixel rgb(106, 88, 71) colored shadow looks like.

```
.shadow{ text-shadow: 4px 4px 2px rgb(106, 88, 71) }
```

Border

The CSS property to change the border of an element to Yxy 10.4986, 0.3709, 0.3684 is called "border". The border property can be set on classes, ids or directly on the HTML element.

This example shows the color as border, it can be applied via the CSS property "border" or "border-color".

```
.border, #border, table{ border:4px solid rgb(106, 88, 71) }
```

If only the border color should be changed use the property `border-color`.

```
.border{ border-color:rgb(106, 88, 71) }
```

If you want to add a box shadow in that color use:

Here you see how a box with a 4 pixel `rgb(106, 88, 71)` colored shadow looks like.

```
.boxshadow{ -moz-box-shadow:4px 4px 4px  
4px rgb(106, 88, 71); -webkit-box-  
shadow:4px 4px 4px 4px rgb(106, 88, 71);  
box-shadow:4px 4px 4px 4px rgb(106, 88,  
71) }
```


Background

The CSS property to change the background color of an element to Yxy 10.4986, 0.3709, 0.3684 is called "background". The background property can be set on classes, ids or directly on the HTML element.

```
.background, #background, body{  
background: rgb(106, 88, 71) }
```

If only the background color should be changed can be used:

```
.background{ background-color: rgb(106, 88,  
71) }
```

This example shows the color as background, it is applied via the CSS property "background".

To optimize and compress your CSS code, you can use our [online CSS compressor and optimizer](#) based on csstidy. If you want to create a linear or radial gradient as background or border, check our [CSS Gradient Generator](#).

Hey! You found this booklet interesting? Support Converting Colors with the new Membership Option!

The pro membership hides all ads, plus gives you double the colors in the color bucket, and more awesome pro features!

[Learn more, Memberships starting at \\$2.50/m!](#)

**Follow me
on Twitter!**

@ConvertingColor