

Converting Colors

$Y_{xy}(11.5699, 0.4009, 0.3646)$

Have a look what the booklet for
Yxy(11.5699, 0.4009, 0.3646)
contains.

Yxy(11.6453, 0.4002, 0.3642)	3
Conversions	4
Details	6
Harmonies	12
Previews	24
Color Blindness Simulation	27
CSS Examples	30

Color

Yxy(11.6453, 0.4002, 0.3642)

Conversions

Conversions Part 1

Format	Color
Hex	7B5847
RGB	123, 88, 71
RGB Percent	48%, 35%, 28%
CMY	0.5176, 0.6549, 0.7216
CMYK	0.00, 0.28, 0.42, 0.52
HSL	20°, 27%, 38%
HSV	20°, 42%, 48%
XYZ	12.7964, 11.6453, 7.5333
YIQ	96.5270, 26.3170, 2.1330

Conversions

Conversions Part 2

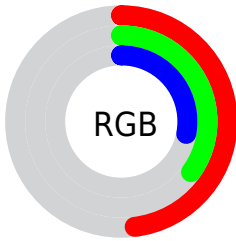
Format	Color
R_{YB}	123, 96, 71
Decimal	8083527
CIE _{Lab}	40.65, 12.10, 15.56
CIE _{LCh}	41, 19.710, 52.141
Yxy	11.6453, 0.4002, 0.3642
Android (android.graphics.Color)	4286273607 (0xFF7B5847)
YUV	96.5270, -12.5848, 23.2168
Hunter-Lab	34.1252, 7.2155, 10.7991

Details

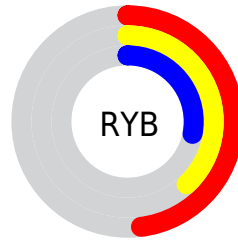
The Yxy color **11.6453, 0.4002, 0.3642** is a dark color, and the websafe version is hex **996666**. A complement of this color would be **13.0789, 0.2513, 0.2901**, and the grayscale version is **11.8589, 0.3127, 0.3290**.

A 20% lighter version of the original color is **28.8801, 0.3769, 0.3556**, and **3.1128, 0.4481, 0.3771** is the 20% darker color. If you saturate the color by 10%, you get **10.2206, 0.4296, 0.3721**, and if you desaturate by 10%, it is **13.2575, 0.3743, 0.3557**.

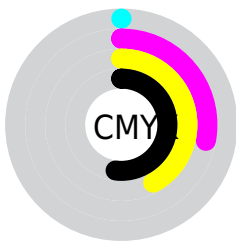
Distribution



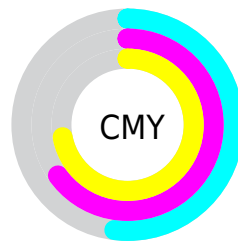
- Red (48%)
- Green (35%)
- Blue (28%)



- Red (48%)
- Yellow (38%)
- Blue (28%)



- Cyan (0%)
- Magenta (28%)
- Yellow (42%)
- Black (52%)



- Cyan (52%)
- Magenta (65%)
- Yellow (72%)

Brightness & Saturation Gradients

These gradients show how the Yxy color 11.6453, 0.4002, 0.3642 changes by changing the brightness by 10 percent. The first figure shows a shift by +10% for each color and the second figure -10%.

Similar to the brightness gradients but the following saturation gradients show a change of the Yxy color 11.6453, 0.4002, 0.3642 by changing the saturation by 10% instead.

■ 11.6453, 0.4002,
0.3642

■ 11.6453, 0.4002,
0.3642

202.0427, 0.3462,
0.3441

■ 6.5026, 0.4189,
0.3699

■ 28.8474, 0.3773,
0.3563

■ 3.1531, 0.4472,
0.3770

■ 41.6757, 0.3697,
0.3535

■ 1.2122, 0.5250,
0.4090

■ 57.8346, 0.3638,
0.3512

■ 0.0716, 0.8354,
0.1646

■ 77.7085, 0.3589,
0.3493

■ 0.0000, 0.0000,
0.0000

■ 101.6819, 0.3549,
0.3477

130.1392, 0.3516,

0.3463

163.4646, 0.3487,
0.3452

■ 11.6453, 0.4002,
0.3642

■ 11.6453, 0.4002,
0.3642

■ 10.2206, 0.4296,
0.3721

■ 13.2575, 0.3743,
0.3557

■ 8.9747, 0.4620,
0.3786

■ 15.0622, 0.3518,
0.3470

■ 7.9005, 0.4961,
0.3826

■ 17.0664, 0.3325,
0.3387

■ 6.9899, 0.5300,
0.3830

■ 19.2760, 0.3161,
0.3307

■ 6.2338, 0.5608,
0.3790

■ 21.6968, 0.3021,
0.3234

■ 5.7438, 0.5834,
0.3750

■ 24.3343, 0.2902,
0.3166

■ 27.1939, 0.2800,
0.3103

■ 30.2807, 0.2713,
0.3046

■ 33.5997, 0.2637,
0.2994

Harmonies

Analogous

The Analogous color harmony consists of three colors that are next to each other on the color wheel.



11.6453, 0.3883, 0.3291



11.6453, 0.4002, 0.3642



11.6453, 0.3867, 0.3937

Triad

The Triadic color harmony groups three colors that are evenly spaced from another and form a triangle on the color wheel.



11.6453, 0.4002, 0.3642



11.6453, 0.2700, 0.3648



11.6453, 0.2694, 0.2590

Complementary

The Complementary color scheme is a pair of colors which are on the opposite of each other on the color wheel.



11.6453, 0.4002, 0.3642



13.0789, 0.2513, 0.2901

Split Complementary

Split-complementary colors differ from the complementary color scheme. The scheme consists of three colors, the original color and two neighbors of the complement color.



11.6453, 0.2419, 0.2631



11.6453, 0.4002, 0.3642



11.6453, 0.2421, 0.3216

Square

The Square scheme is like the rectangle color scheme, but the four colors are evenly spaced on the color wheel.



11.6453, 0.4002, 0.3642



11.6453, 0.3105, 0.3980



11.6453, 0.2323, 0.2847



11.6453, 0.3101, 0.2710

Rectangle

The Rectangle color scheme consists of four colors that form a rectangle on the color wheel.



11.6453, 0.4002, 0.3642



11.6453, 0.3661, 0.4055



11.6453, 0.2323, 0.2847



11.6453, 0.2584, 0.2585

Sweetspot

The Sweet Spot groups the original color and five complimentary colors.



11.6459, 0.4002, 0.3642



30.1684, 0.3344, 0.3395



9.7693, 0.3453, 0.2584



6.9404, 0.3379, 0.3411



63.8283, 0.3127, 0.3290



8.3535, 0.3127, 0.3290

Same Dimension

The Same Dimension uses a secret algorithm to generate beautiful new colors.



11.6459, 0.4002, 0.3642



18.3071, 0.4295, 0.3721



16.5830, 0.3797, 0.4125



4.2093, 0.3270, 0.3360



5.9316, 0.5837, 0.3748



26.8944, 0.5927, 0.3676

Inverse Universe

The Inverse Universe completely reimagines the original color for something new.



13.0789, 0.2513, 0.2901



21.2241, 0.2382, 0.2791



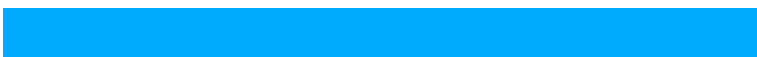
8.5849, 0.2416, 0.2284



4.3020, 0.2994, 0.3219



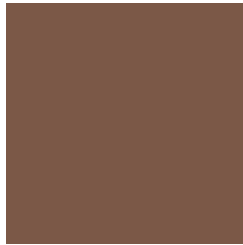
7.8359, 0.1951, 0.2223



35.7764, 0.1934, 0.2162

Previews

White Background



This preview shows how the Yxy color 11.6453, 0.4002, 0.3642 looks on a white background.

Color Contrast Check

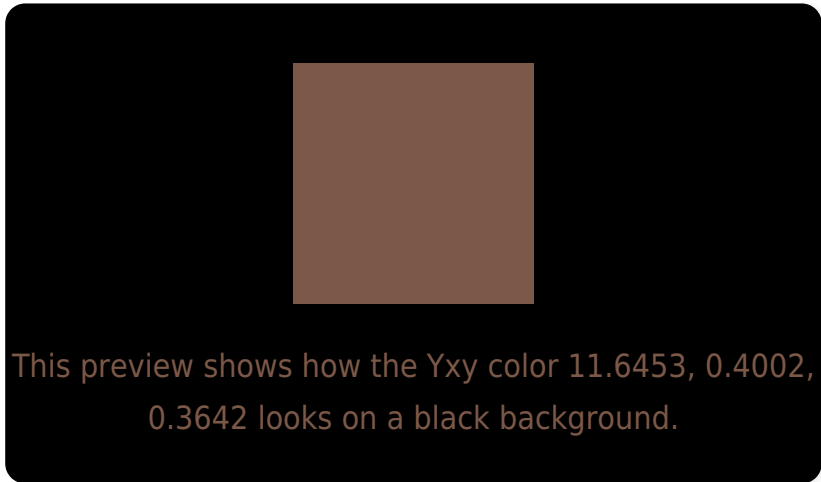
Large Text (above 18pt) WCAG AA ✓ Pass

Any Text WCAG AA ✓ Pass

Large Text (above 18pt) WCAG AAA ✓ Pass

Any Text WCAG AAA × Fail

Black Background



Color Contrast Check

Large Text (above 18pt) WCAG AA ✓ Pass

Any Text WCAG AA × Fail

Large Text (above 18pt) WCAG AAA × Fail

Any Text WCAG AAA × Fail

If you want to check with other color combinations, try the [Color Contrast Checker](#).

Yxy 11.6453, 0.4002, 0.3642

Background



This preview shows how black text looks on a background with the Yxy color 11.6453, 0.4002, 0.3642.



This preview shows how white text looks on a background with the Yxy color 11.6453, 0.4002, 0.3642.

Color Blindness Simulation

Color vision deficiency is a very complex topic, and I could not describe the different causes any better than Wikipedia does, so if you want to learn more, you should check out their [article about color blindness](#).

Dichromacy



Original Color

11.6453, 0.4002, 0.3642

Protanopia

11.6985, 0.3530, 0.3777

Deuteranopia

11.6739, 0.3834, 0.3770



Tritanopia

11.6297, 0.3694, 0.3150

Trichromacy



Original Color

11.6453, 0.4002, 0.3642

Protanomaly

11.6381, 0.3696, 0.3714

Deuteranomaly

11.7063, 0.3892, 0.3740

Tritanomaly

11.5808, 0.3811, 0.3333

Monochromacy



Original Color

11.6453, 0.4002, 0.3642

Achromatopsia

11.9538, 0.3127, 0.3290

Achromatomaly

11.7742, 0.3406, 0.3426

CSS Examples

Text

The CSS property to change the color of the text to Yxy 11.6453, 0.4002, 0.3642 is called "color". The color property can be set on classes, ids or directly on the HTML element.

This example shows how text in the color `rgb(123, 88, 71)` looks like.

```
.text, #text, p{  
    color:rgb(123, 88, 71)  
}
```

If you want to add a text shadow in that color use the text-shadow property, you can generate a text shadow directly with our [CSS Text Shadow Generator](#).

Here you see how black text with a 4 pixel rgb(123, 88, 71) colored shadow looks like.

```
.shadow{ text-shadow: 4px 4px 2px rgb(123, 88, 71) }
```

Border

The CSS property to change the border of an element to Yxy 11.6453, 0.4002, 0.3642 is called "border". The border property can be set on classes, ids or directly on the HTML element.

This example shows the color as border, it can be applied via the CSS property "border" or "border-color".

```
.border, #border, table{ border:4px solid rgb(123, 88, 71) }
```

If only the border color should be changed use the property border-color.

```
.border{ border-color:rgb(123, 88, 71) }
```

If you want to add a box shadow in that color use:

Here you see how a box with a 4 pixel rgb(123, 88, 71) colored shadow looks like.

```
.boxshadow{ -moz-box-shadow:4px 4px 4px  
4px rgb(123, 88, 71); -webkit-box-  
shadow:4px 4px 4px 4px rgb(123, 88, 71);  
box-shadow:4px 4px 4px 4px rgb(123, 88,  
71) }
```


Background

The CSS property to change the background color of an element to Yxy 11.6453, 0.4002, 0.3642 is called "background". The background property can be set on classes, ids or directly on the HTML element.

```
.background, #background, body{  
background: rgb(123, 88, 71) }
```

If only the background color should be changed can be used:

```
.background{ background-color: rgb(123, 88,  
71) }
```

This example shows the color as background, it is applied via the CSS property "background".

To optimize and compress your CSS code, you can use our [online CSS compressor and optimizer](#) based on csstidy. If you want to create a linear or radial gradient as background or border, check our [CSS Gradient Generator](#).

Hey! You found this booklet interesting? Support Converting Colors with the new Membership Option!

The pro membership hides all ads, plus gives you double the colors in the color bucket, and more awesome pro features!

[Learn more, Memberships starting at \\$2.50/m!](#)

**Follow me
on Twitter!**

@ConvertingColor