

# Converting Colors

$Y_{xy}(12.5517, 0.3520, 0.3001)$

Have a look what the booklet for  
Yxy(12.5517, 0.3520, 0.3001)  
contains.

<b>Yxy(12.6361, 0.3526, 0.3016)</b> .....	3
<b><i>Conversions</i></b> .....	4
<b><i>Details</i></b> .....	6
<b><i>Harmonies</i></b> .....	12
<b><i>Previews</i></b> .....	24
<b><i>Color Blindness Simulation</i></b> .....	27
<b><i>CSS Examples</i></b> .....	30

**Color**

**Yxy(12.6361, 0.3526, 0.3016)**

# Conversions

## Conversions Part 1

<b>Format</b>	<b>Color</b>
Hex	7F5967
RGB	127, 89, 103
RGB Percent	50%, 35%, 40%
CMY	0.5019, 0.6510, 0.5961
CMYK	0.00, 0.30, 0.19, 0.50
HSL	338°, 18%, 42%
HSV	338°, 30%, 50%
XYZ	14.7728, 12.6361, 14.4879
YIQ	101.9580, 18.1540, 12.4100

# Conversions

## Conversions Part 2

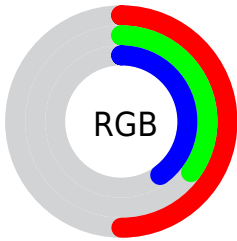
<b>Format</b>	<b>Color</b>
<b>R<sub>YB</sub></b>	127, 89, 103
Decimal	8345959
CIE <sub>Lab</sub>	42.21, 17.93, -1.74
CIE <sub>LCh</sub>	42, 18.011, 354.446
Yxy	12.6361, 0.3526, 0.3016
Android (android.graphics.Color)	4286536039 (0xFF7F5967)
YUV	101.9580, 0.5137, 21.9618
Hunter-Lab	35.5473, 11.9738, 0.7184

# Details

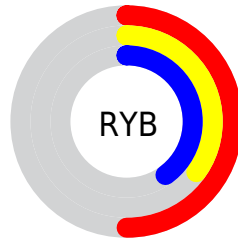
The Yxy color **12.6361, 0.3526, 0.3016** is a dark color, and the websafe version is hex **996666**. A complement of this color would be **18.4969, 0.2846, 0.3584**, and the grayscale version is **13.2708, 0.3127, 0.3290**.

A 20% lighter version of the original color is **30.5016, 0.3421, 0.3079**, and **3.5911, 0.3735, 0.2891** is the 20% darker color. If you saturate the color by 10%, you get **10.5485, 0.3716, 0.2921**, and if you desaturate by 10%, it is **15.1050, 0.3367, 0.3111**.

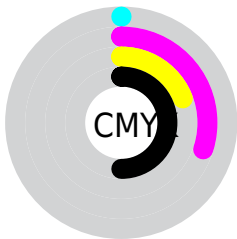
# Distribution



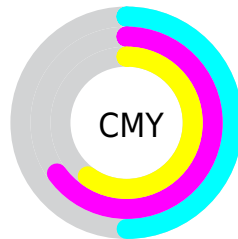
- Red (50%)
- Green (35%)
- Blue (40%)



- Red (50%)
- Yellow (35%)
- Blue (40%)



- Cyan (0%)
- Magenta (30%)
- Yellow (19%)
- Black (50%)



- Cyan (50%)
- Magenta (65%)
- Yellow (60%)

# Brightness & Saturation Gradients

These gradients show how the Yxy color 12.6361, 0.3526, 0.3016 changes by changing the brightness by 10 percent. The first figure shows a shift by +10% for each color and the second figure -10%.

Similar to the brightness gradients but the following saturation gradients show a change of the Yxy color 12.6361, 0.3526, 0.3016 by changing the saturation by 10% instead.



12.6361, 0.3526,  
0.3016

12.6361, 0.3526,  
0.3016

208.5721, 0.3285,  
0.3181

7.1784, 0.3608,  
0.2961

30.6485, 0.3425,  
0.3085

3.5739, 0.3731,  
0.2879

43.9719, 0.3391,  
0.3107

1.4382, 0.3938,  
0.2743

60.6862, 0.3365,  
0.3126

0.2446, 0.5143,  
0.1877

81.1755, 0.3343,  
0.3141

0.0000, 0.0000,  
0.0000

105.8244, 0.3325,  
0.3153

135.0172, 0.3309,

0.3164

169.1383, 0.3296,  
0.3173

■ 12.6361, 0.3526,  
0.3016

■ 12.6361, 0.3526,  
0.3016

■ 10.5485, 0.3716,  
0.2921

■ 15.1050, 0.3367,  
0.3111

■ 8.8215, 0.3941,  
0.2831

■ 17.9714, 0.3235,  
0.3204

■ 7.4346, 0.4202,  
0.2755

■ 21.2524, 0.3126,  
0.3291

■ 6.3648, 0.4493,  
0.2701

■ 24.9638, 0.3037,  
0.3372

■ 5.5864, 0.4805,  
0.2683

■ 29.1204, 0.2963,  
0.3447

■ 5.0693, 0.5119,  
0.2709

■ 33.7366, 0.2901,  
0.3515

■ 4.7181, 0.5426,  
0.2764

■ 38.8257, 0.2851,  
0.3578

■ 4.7154, 0.5429,  
0.2764

■ 44.4008, 0.2808,  
0.3636

■ 50.4744, 0.2773,  
0.3689

# Harmonies

## Analogous

The Analogous color harmony consists of three colors that are next to each other on the color wheel.



12.6361, 0.3136, 0.2783



12.6361, 0.3526, 0.3016



12.6361, 0.3814, 0.3319

# Triad

The Triadic color harmony groups three colors that are evenly spaced from another and form a triangle on the color wheel.



12.6361, 0.3526, 0.3016



12.6361, 0.3465, 0.3991



12.6361, 0.2407, 0.2878

# Complementary

The Complementary color scheme is a pair of colors which are on the opposite of each other on the color wheel.



12.6361, 0.3526, 0.3016



18.4969, 0.2846, 0.3584

# Split Complementary

Split-complementary colors differ from the complementary color scheme. The scheme consists of three colors, the original color and two neighbors of the complement color.



12.6361, 0.2483, 0.3199



12.6361, 0.3526, 0.3016



12.6361, 0.3081, 0.3882

# Square

The Square scheme is like the rectangle color scheme, but the four colors are evenly spaced on the color wheel.



12.6361, 0.3526, 0.3016



12.6361, 0.3770, 0.3885



12.6361, 0.2723, 0.3579



12.6361, 0.2507, 0.2693



# Rectangle

The Rectangle color scheme consists of four colors that form a rectangle on the color wheel.



12.6361, 0.3526, 0.3016



12.6361, 0.3899, 0.3531



12.6361, 0.2723, 0.3579



12.6361, 0.2412, 0.2972

# Sweetspot

The Sweet Spot groups the original color and five complimentary colors.



12.6367, 0.3526, 0.3016



32.5705, 0.3227, 0.3210



12.1513, 0.2948, 0.2533



7.4638, 0.3242, 0.3199



65.5931, 0.3127, 0.3290



8.8982, 0.3127, 0.3290



# Same Dimension

The Same Dimension uses a secret algorithm to generate beautiful new colors.



12.6367, 0.3526, 0.3016



19.9639, 0.3655, 0.2950



13.1394, 0.3733, 0.3380



4.3684, 0.3225, 0.3211



4.7550, 0.5430, 0.2765



0.0000, 0.0000, 0.0000



# Inverse Universe

The Inverse Universe completely reimagines the original color for something new.



12.6367, 0.3526, 0.3016



19.9639, 0.3655, 0.2950



17.7163, 0.2704, 0.3197



4.3684, 0.3225, 0.3211



4.7550, 0.5430, 0.2765

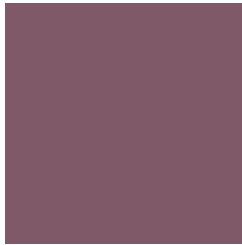


0.0000, 0.0000, 0.0000



# Previews

## White Background



This preview shows how the Yxy color 12.6361, 0.3526, 0.3016 looks on a white background.

## Color Contrast Check

Large Text (above 18pt) WCAG AA ✓ Pass

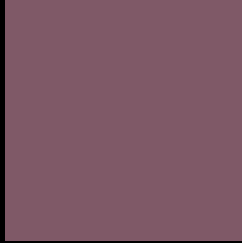
Any Text WCAG AA ✓ Pass

Large Text (above 18pt) WCAG AAA ✓ Pass

Any Text WCAG AAA × Fail



# Black Background



This preview shows how the Yxy color 12.6361, 0.3526, 0.3016 looks on a black background.

## Color Contrast Check

Large Text (above 18pt) WCAG AA ✓ Pass

Any Text WCAG AA × Fail

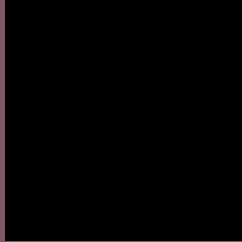
Large Text (above 18pt) WCAG AAA × Fail

Any Text WCAG AAA × Fail

If you want to check with other color combinations, try the [Color Contrast Checker](#).

**Yxy 12.6361, 0.3526, 0.3016**

## **Background**



This preview shows how black text looks on a background with the Yxy color 12.6361, 0.3526, 0.3016.



This preview shows how white text looks on a background with the Yxy color 12.6361, 0.3526, 0.3016.

# Color Blindness Simulation

Color vision deficiency is a very complex topic, and I could not describe the different causes any better than Wikipedia does, so if you want to learn more, you should check out their [article about color blindness](#).

## Dichromacy



### Original Color

12.6361, 0.3526, 0.3016

### Protanopia

12.6805, 0.2994, 0.3069

### Deuteranopia

12.7599, 0.3238, 0.3183



## Tritanopia

12.6110, 0.3603, 0.3152

# Trichromacy



## Original Color

12.6361, 0.3526, 0.3016

## Protanomaly

12.4972, 0.3169, 0.3034

## Deuteranomaly

12.6777, 0.3352, 0.3124

## Tritanomaly

12.6488, 0.3571, 0.3112

# Monochromacy



## Original Color

12.6361, 0.3526, 0.3016

## Achromatopsia

13.2868, 0.3127, 0.3290

## Achromatomaly

12.8882, 0.3268, 0.3184

# CSS Examples

## Text

The CSS property to change the color of the text to Yxy 12.6361, 0.3526, 0.3016 is called "color". The color property can be set on classes, ids or directly on the HTML element.

This example shows how text in the color `rgb(127, 89, 103)` looks like.

```
.text, #text, p{  
    color:rgb(127, 89, 103)  
}
```

If you want to add a text shadow in that color use the text-shadow property, you can generate a text shadow directly with our [CSS Text Shadow Generator](#).

Here you see how black text with a 4 pixel rgb(127, 89, 103) colored shadow looks like.

```
.shadow{ text-shadow: 4px 4px 2px rgb(127, 89, 103) }
```

## Border

The CSS property to change the border of an element to Yxy 12.6361, 0.3526, 0.3016 is called "border". The border property can be set on classes, ids or directly on the HTML element.

This example shows the color as border, it can be applied via the CSS property "border" or "border-color".

```
.border, #border, table{ border:4px solid rgb(127, 89, 103) }
```

If only the border color should be changed use the property border-color.

```
.border{ border-color:rgb(127, 89, 103) }
```

If you want to add a box shadow in that color use:

Here you see how a box with a 4 pixel rgb(127, 89, 103) colored shadow looks like.

```
.boxshadow{ -moz-box-shadow:4px 4px 4px  
4px rgb(127, 89, 103); -webkit-box-  
shadow:4px 4px 4px 4px rgb(127, 89, 103);  
box-shadow:4px 4px 4px 4px rgb(127, 89,  
103) }
```



# Background

The CSS property to change the background color of an element to Yxy 12.6361, 0.3526, 0.3016 is called "background". The background property can be set on classes, ids or directly on the HTML element.

```
.background, #background, body{  
background: rgb(127, 89, 103) }
```

If only the background color should be changed can be used:

```
.background{ background-color: rgb(127, 89,  
103) }
```

This example shows the color as background, it is applied via the CSS property "background".

To optimize and compress your CSS code, you can use our [online CSS compressor and optimizer](#) based on csstidy. If you want to create a linear or radial gradient as background or border, check our [CSS Gradient Generator](#).

Hey! You found this booklet interesting? Support Converting Colors with the new Membership Option!

The pro membership hides all ads, plus gives you double the colors in the color bucket, and more awesome pro features!

**[Learn more, Memberships starting at \\$2.50/m!](#)**

**Follow me  
on Twitter!**

@ConvertingColor