

Converting Colors

$Y_{xy}(16.0763, 0.3413, 0.3459)$

Have a look what the booklet for
Yxy(16.0763, 0.3413, 0.3459)
contains.

Yxy(16.0144, 0.3413, 0.3449)	3
Conversions	4
Details	6
Harmonies	12
Previews	24
Color Blindness Simulation	27
CSS Examples	30

Color

Yxy(16.0144, 0.3413, 0.3449)

Conversions

Conversions Part 1

Format	Color
Hex	7A6D65
RGB	122, 109, 101
RGB Percent	48%, 43%, 40%
CMY	0.5214, 0.5726, 0.6039
CMYK	0.00, 0.11, 0.17, 0.52
HSL	23°, 9%, 44%
HSV	23°, 17%, 48%
XYZ	15.8472, 16.0144, 14.5704
YIQ	111.9750, 10.3160, 0.2680

Conversions

Conversions Part 2

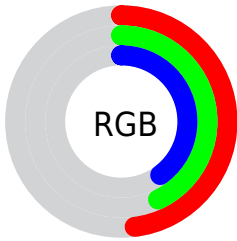
Format	Color
R_{YB}	122, 114, 101
Decimal	8023397
CIE Lab	46.99, 3.67, 6.31
CIE LCh	47, 7.302, 59.805
Yxy	16.0144, 0.3413, 0.3449
Android (android.graphics.Color)	4286213477 (0xFF7A6D65)
YUV	111.9750, -5.4107, 8.7919
Hunter-Lab	40.0180, 0.6550, 6.4254

Details

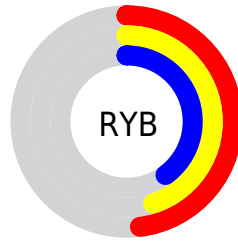
The Yxy color **16.0144, 0.3413, 0.3449** is a dark color, and the websafe version is hex **666666**. A complement of this color would be **16.2193, 0.2872, 0.3126**, and the grayscale version is **16.2108, 0.3127, 0.3290**.

A 20% lighter version of the original color is **36.5226, 0.3347, 0.3404**, and **5.1281, 0.3549, 0.3543** is the 20% darker color. If you saturate the color by 10%, you get **14.2473, 0.3615, 0.3548**, and if you desaturate by 10%, it is **17.9576, 0.3238, 0.3355**.

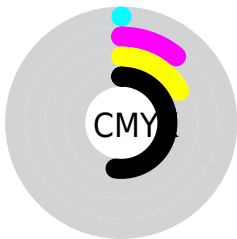
Distribution



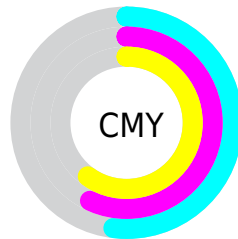
- Red (48%)
- Green (43%)
- Blue (40%)



- Red (48%)
- Yellow (45%)
- Blue (40%)



- Cyan (0%)
- Magenta (11%)
- Yellow (17%)
- Black (52%)



- Cyan (52%)
- Magenta (57%)
- Yellow (60%)

Brightness & Saturation Gradients

These gradients show how the Yxy color 16.0144, 0.3413, 0.3449 changes by changing the brightness by 10 percent. The first figure shows a shift by +10% for each color and the second figure -10%.

Similar to the brightness gradients but the following saturation gradients show a change of the Yxy color 16.0144, 0.3413, 0.3449 by changing the saturation by 10% instead.

■ 16.0144, 0.3413,
0.3449

■ 16.0144, 0.3413,
0.3449

229.4267, 0.3244,
0.3357

■ 9.5343, 0.3467,
0.3478

■ 36.6232, 0.3344,
0.3412

■ 5.0913, 0.3547,
0.3519

■ 51.5207, 0.3320,
0.3399

■ 2.3009, 0.3676,
0.3583

■ 69.9929, 0.3301,
0.3389

■ 0.7742, 0.4125,
0.3868

■ 92.4240, 0.3286,
0.3380

■ 0.0000, 0.0000,
0.0000

119.1986, 0.3273,
0.3373

150.7010, 0.3262,

0.3367

187.3155, 0.3252,
0.3361

■ 16.0144, 0.3413,
0.3449

■ 16.0144, 0.3413,
0.3449

■ 14.2473, 0.3615,
0.3548

■ 17.9576, 0.3238,
0.3355

■ 12.6491, 0.3848,
0.3647

■ 20.0795, 0.3088,
0.3266

■ 11.2152, 0.4111,
0.3744

■ 22.3856, 0.2958,
0.3184

■ 9.9400, 0.4403,
0.3829

■ 24.8802, 0.2847,
0.3108

■ 8.8175, 0.4715,
0.3895

■ 27.5677, 0.2751,
0.3038

■ 7.8413, 0.5034,
0.3929

■ 30.4522, 0.2668,
0.2975

■ 7.0045, 0.5338,
0.3921

■ 33.5377, 0.2596,
0.2917

■ 6.2966, 0.5614,
0.3874

■ 36.8282, 0.2534,
0.2863

■ 6.1198, 0.5693,
0.3862

■ 40.3274, 0.2479,
0.2815

Harmonies

Analogous

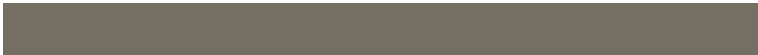
The Analogous color harmony consists of three colors that are next to each other on the color wheel.



16.0144, 0.3393, 0.3331



16.0144, 0.3413, 0.3449



16.0144, 0.3354, 0.3528

Triad

The Triadic color harmony groups three colors that are evenly spaced from another and form a triangle on the color wheel.



16.0144, 0.3413, 0.3449



16.0144, 0.2955, 0.3374



16.0144, 0.3016, 0.3049

Complementary

The Complementary color scheme is a pair of colors which are on the opposite of each other on the color wheel.



16.0144, 0.3413, 0.3449



16.2193, 0.2872, 0.3126

Split Complementary

Split-complementary colors differ from the complementary color scheme. The scheme consists of three colors, the original color and two neighbors of the complement color.



16.0144, 0.2903, 0.3055



16.0144, 0.3413, 0.3449



16.0144, 0.2868, 0.3239

Square

The Square scheme is like the rectangle color scheme, but the four colors are evenly spaced on the color wheel.



16.0144, 0.3413, 0.3449



16.0144, 0.3089, 0.3487



16.0144, 0.2849, 0.3123



16.0144, 0.3161, 0.3104

Rectangle

The Rectangle color scheme consists of four colors that form a rectangle on the color wheel.



16.0144, 0.3413, 0.3449



16.0144, 0.3279, 0.3546



16.0144, 0.2849, 0.3123



16.0144, 0.2973, 0.3044

Sweetspot

The Sweet Spot groups the original color and five complimentary colors.



16.0151, 0.3413, 0.3449



32.3343, 0.3205, 0.3336



14.6716, 0.3250, 0.3029



7.3467, 0.3213, 0.3341



62.0916, 0.3127, 0.3290



7.8288, 0.3127, 0.3290

Same Dimension

The Same Dimension uses a secret algorithm to generate beautiful new colors.



16.0151, 0.3413, 0.3449



26.7923, 0.3496, 0.3491



18.3277, 0.3381, 0.3645



4.2414, 0.3268, 0.3372



6.4245, 0.5697, 0.3859



29.1172, 0.5786, 0.3788

Inverse Universe

The Inverse Universe completely reimagines the original color for something new.



16.2193, 0.2872, 0.3126



27.2268, 0.2808, 0.3080



14.0364, 0.2863, 0.2909



4.2688, 0.2994, 0.3207



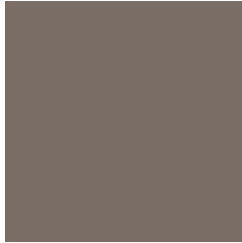
6.8590, 0.1900, 0.2040



31.0371, 0.1881, 0.1970

Previews

White Background



This preview shows how the Yxy color 16.0144, 0.3413, 0.3449 looks on a white background.

Color Contrast Check

Large Text (above 18pt) WCAG AA ✓ Pass

Any Text WCAG AA ✓ Pass

Large Text (above 18pt) WCAG AAA ✓ Pass

Any Text WCAG AAA × Fail

Black Background



This preview shows how the Yxy color 16.0144, 0.3413, 0.3449 looks on a black background.

Color Contrast Check

Large Text (above 18pt) WCAG AA ✓ Pass

Any Text WCAG AA ✗ Fail

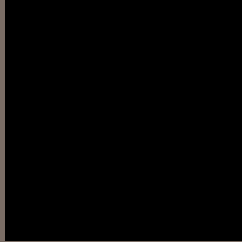
Large Text (above 18pt) WCAG AAA ✗ Fail

Any Text WCAG AAA ✗ Fail

If you want to check with other color combinations, try the [Color Contrast Checker](#).

Yxy 16.0144, 0.3413, 0.3449

Background



This preview shows how black text looks on a background with the Yxy color 16.0144, 0.3413, 0.3449.

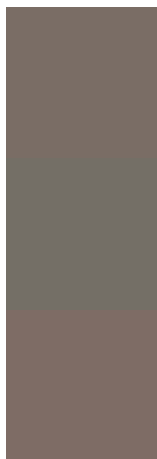


This preview shows how white text looks on a background with the Yxy color 16.0144, 0.3413, 0.3449.

Color Blindness Simulation

Color vision deficiency is a very complex topic, and I could not describe the different causes any better than Wikipedia does, so if you want to learn more, you should check out their [article about color blindness](#).

Dichromacy



Original Color

16.0144, 0.3413, 0.3449

Protanopia

16.0412, 0.3309, 0.3473

Deuteranopia

16.1003, 0.3473, 0.3427



Tritanopia

16.0383, 0.3259, 0.3136

Trichromacy



Original Color

16.0144, 0.3413, 0.3449

Protanomaly

15.9627, 0.3340, 0.3452

Deuteranomaly

16.0247, 0.3459, 0.3428

Tritanomaly

16.0619, 0.3309, 0.3252

Monochromacy



Original Color

16.0144, 0.3413, 0.3449

Achromatopsia

16.2029, 0.3127, 0.3290

Achromatomaly

16.1646, 0.3232, 0.3351

CSS Examples

Text

The CSS property to change the color of the text to Yxy 16.0144, 0.3413, 0.3449 is called "color". The color property can be set on classes, ids or directly on the HTML element.

This example shows how text in the color `rgb(122, 109, 101)` looks like.

```
.text, #text, p{  
    color:rgb(122, 109, 101)  
}
```

If you want to add a text shadow in that color use the text-shadow property, you can generate a text shadow directly with our [CSS Text Shadow Generator](#).

Here you see how black text with a 4 pixel rgb(122, 109, 101) colored shadow looks like.

```
.shadow{ text-shadow: 4px 4px 2px rgb(122, 109, 101) }
```

Border

The CSS property to change the border of an element to Yxy 16.0144, 0.3413, 0.3449 is called "border". The border property can be set on classes, ids or directly on the HTML element.

This example shows the color as border, it can be applied via the CSS property "border" or "border-color".

```
.border, #border, table{ border:4px solid rgb(122, 109, 101) }
```

If only the border color should be changed use the property `border-color`.

```
.border{ border-color:rgb(122, 109, 101) }
```

If you want to add a box shadow in that color use:

Here you see how a box with a 4 pixel `rgb(122, 109, 101)` colored shadow looks like.

```
.boxshadow{ -moz-box-shadow:4px 4px 4px  
4px rgb(122, 109, 101); -webkit-box-  
shadow:4px 4px 4px 4px rgb(122, 109, 101);  
box-shadow:4px 4px 4px 4px rgb(122, 109,  
101) }
```


Background

The CSS property to change the background color of an element to Yxy 16.0144, 0.3413, 0.3449 is called "background". The background property can be set on classes, ids or directly on the HTML element.

```
.background, #background, body{  
background: rgb(122, 109, 101) }
```

If only the background color should be changed can be used:

```
.background{ background-color: rgb(122,  
109, 101) }
```

This example shows the color as background, it is applied via the CSS property "background".

To optimize and compress your CSS code, you can use our [online CSS compressor and optimizer](#) based on csstidy. If you want to create a linear or radial gradient as background or border, check our [CSS Gradient Generator](#).

Hey! You found this booklet interesting? Support Converting Colors with the new Membership Option!

The pro membership hides all ads, plus gives you double the colors in the color bucket, and more awesome pro features!

[Learn more, Memberships starting at \\$2.50/m!](#)

**Follow me
on Twitter!**

@ConvertingColor