

# Converting Colors

$Y_{xy}(16.4609, 0.3528, 0.3509)$

Have a look what the booklet for  
Yxy(16.4609, 0.3528, 0.3509)  
contains.

<b>Yxy(16.3311, 0.3525, 0.3505)</b> .....	3
<b>Conversions</b> .....	4
<b>Details</b> .....	6
<b>Harmonies</b> .....	12
<b>Previews</b> .....	24
<b>Color Blindness Simulation</b> .....	27
<b>CSS Examples</b> .....	30

# Color

**Yxy(16.3311, 0.3525, 0.3505)**

# Conversions

## Conversions Part 1

<b>Format</b>	<b>Color</b>
Hex	7F6D62
RGB	127, 109, 98
RGB Percent	50%, 43%, 38%
CMY	0.5020, 0.5725, 0.6157
CMYK	0.00, 0.14, 0.23, 0.50
HSL	23°, 13%, 44%
HSV	23°, 23%, 50%
XYZ	16.4243, 16.3311, 13.8383
YIQ	113.1280, 14.2590, 0.3950

# Conversions

## Conversions Part 2

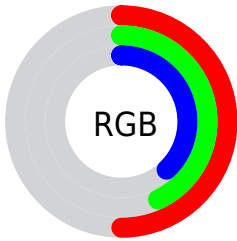
<b>Format</b>	<b>Color</b>
<b>R<sub>YB</sub></b>	127, 116, 98
Decimal	8351074
CIE Lab	47.41, 5.19, 8.77
CIE LCh	47, 10.189, 59.346
Yxy	16.3311, 0.3525, 0.3505
Android (android.graphics.Color)	4286541154 (0xFF7F6D62)
YUV	113.1280, -7.4581, 12.1657
Hunter-Lab	40.4118, 1.8260, 7.9854

# Details

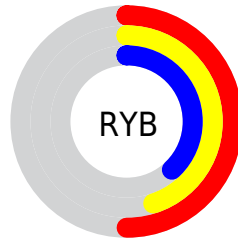
The Yxy color **16.3311, 0.3525, 0.3505** is a dark color, and the websafe version is hex **666666**. A complement of this color would be **16.6126, 0.2787, 0.3065**, and the grayscale version is **16.5727, 0.3127, 0.3290**.

A 20% lighter version of the original color is **37.0148, 0.3426, 0.3444**, and **5.2710, 0.3687, 0.3597** is the 20% darker color. If you saturate the color by 10%, you get **14.5050, 0.3745, 0.3605**, and if you desaturate by 10%, it is **18.3473, 0.3334, 0.3408**.

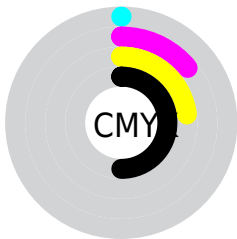
# Distribution



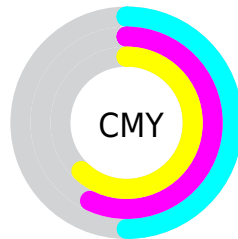
- Red (50%)
- Green (43%)
- Blue (38%)



- Red (50%)
- Yellow (45%)
- Blue (38%)



- Cyan (0%)
- Magenta (14%)
- Yellow (23%)
- Black (50%)



- Cyan (50%)
- Magenta (57%)
- Yellow (62%)

# Brightness & Saturation Gradients

These gradients show how the Yxy color 16.3311, 0.3525, 0.3505 changes by changing the brightness by 10 percent. The first figure shows a shift by +10% for each color and the second figure -10%.

Similar to the brightness gradients but the following saturation gradients show a change of the Yxy color 16.3311, 0.3525, 0.3505 by changing the saturation by 10% instead.



■ 16.3311, 0.3525,  
0.3505

■ 16.3311, 0.3525,  
0.3505

231.2876, 0.3290,  
0.3382

■ 9.7588, 0.3600,  
0.3543

■ 37.1721, 0.3429,  
0.3456

■ 5.2393, 0.3710,  
0.3596

■ 52.2095, 0.3396,  
0.3438

■ 2.3883, 0.3885,  
0.3676

■ 70.8373, 0.3370,  
0.3425

■ 0.8199, 0.4522,  
0.4084

■ 93.4401, 0.3348,  
0.3413

■ 0.0000, 0.0000,  
0.0000

120.4021, 0.3330,  
0.3403

152.1077, 0.3315,

0.3395

188.9415, 0.3302,  
0.3388

■ 16.3311, 0.3525,  
0.3505

■ 16.3311, 0.3525,  
0.3505

■ 14.5050, 0.3745,  
0.3605

■ 18.3473, 0.3334,  
0.3408

■ 12.8611, 0.3997,  
0.3704

■ 20.5568, 0.3170,  
0.3315

■ 11.3941, 0.4278,  
0.3796

■ 22.9656, 0.3028,  
0.3229

■ 10.0975, 0.4584,  
0.3871

■ 25.5787, 0.2907,  
0.3149

■ 8.9645, 0.4904,  
0.3920

■ 28.4009, 0.2802,  
0.3076

■ 7.9878, 0.5218,  
0.3930

■ 31.4370, 0.2712,  
0.3009

■ 7.1591, 0.5502,  
0.3894

■ 34.6913, 0.2634,  
0.2947

■ 6.6457, 0.5699,  
0.3857

■ 38.1684, 0.2566,  
0.2891

■ 41.8724, 0.2507,  
0.2840

# Harmonies

## Analogous

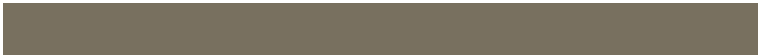
The Analogous color harmony consists of three colors that are next to each other on the color wheel.



16.3311, 0.3496, 0.3342



16.3311, 0.3525, 0.3505



16.3311, 0.3444, 0.3619

# Triad

The Triadic color harmony groups three colors that are evenly spaced from another and form a triangle on the color wheel.



16.3311, 0.3525, 0.3505



16.3311, 0.2891, 0.3409



16.3311, 0.2969, 0.2959

# Complementary

The Complementary color scheme is a pair of colors which are on the opposite of each other on the color wheel.



16.3311, 0.3525, 0.3505



16.6126, 0.2787, 0.3065

# Split Complementary

Split-complementary colors differ from the complementary color scheme. The scheme consists of three colors, the original color and two neighbors of the complement color.



16.3311, 0.2815, 0.2966



16.3311, 0.3525, 0.3505



16.3311, 0.2772, 0.3220

# Square

The Square scheme is like the rectangle color scheme, but the four colors are evenly spaced on the color wheel.



16.3311, 0.3525, 0.3505



16.3311, 0.3075, 0.3568



16.3311, 0.2744, 0.3058



16.3311, 0.3170, 0.3034



# Rectangle

The Rectangle color scheme consists of four colors that form a rectangle on the color wheel.



16.3311, 0.3525, 0.3505



16.3311, 0.3340, 0.3647



16.3311, 0.2744, 0.3058



16.3311, 0.2910, 0.2951

# Sweetspot

The Sweet Spot groups the original color and five complimentary colors.



16.3318, 0.3525, 0.3505



35.0617, 0.3238, 0.3354



14.5137, 0.3299, 0.2939



8.1672, 0.3245, 0.3359



65.5931, 0.3127, 0.3290



8.8982, 0.3127, 0.3290



# Same Dimension

The Same Dimension uses a secret algorithm to generate beautiful new colors.



16.3318, 0.3525, 0.3505



27.6374, 0.3627, 0.3553



19.5902, 0.3470, 0.3765



4.5913, 0.3270, 0.3372



6.7006, 0.5699, 0.3857



0.0000, 0.0000, 0.0000



# Inverse Universe

The Inverse Universe completely reimagines the original color for something new.



16.6126, 0.2787, 0.3065



28.2239, 0.2715, 0.3011



13.6022, 0.2765, 0.2765



4.6209, 0.2993, 0.3206



7.1460, 0.1899, 0.2037

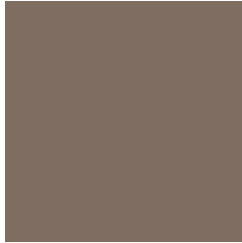


0.0000, 0.0000, 0.0000



# Previews

## White Background



This preview shows how the Yxy color 16.3311, 0.3525, 0.3505 looks on a white background.

## Color Contrast Check

Large Text (above 18pt) WCAG AA ✓ Pass

Any Text WCAG AA ✓ Pass

Large Text (above 18pt) WCAG AAA ✓ Pass

Any Text WCAG AAA × Fail



# Black Background



This preview shows how the Yxy color 16.3311, 0.3525, 0.3505 looks on a black background.

## Color Contrast Check

Large Text (above 18pt) WCAG AA ✓ Pass

Any Text WCAG AA × Fail

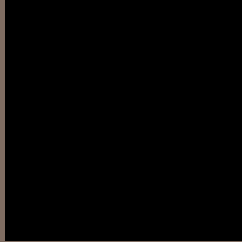
Large Text (above 18pt) WCAG AAA × Fail

Any Text WCAG AAA × Fail

If you want to check with other color combinations, try the [Color Contrast Checker](#).

**Yxy 16.3311, 0.3525, 0.3505**

## **Background**



This preview shows how black text looks on a background with the Yxy color 16.3311, 0.3525, 0.3505.

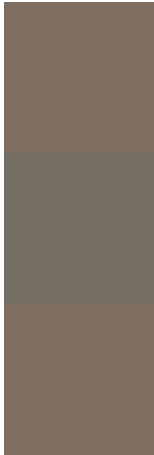


This preview shows how white text looks on a background with the Yxy color 16.3311, 0.3525, 0.3505.

# Color Blindness Simulation

Color vision deficiency is a very complex topic, and I could not describe the different causes any better than Wikipedia does, so if you want to learn more, you should check out their [article about color blindness](#).

## Dichromacy



### Original Color

16.3311, 0.3525, 0.3505

### Protanopia

16.3600, 0.3360, 0.3532

### Deuteranopia

16.2741, 0.3558, 0.3484



## Tritanopia

16.4203, 0.3328, 0.3140

# Trichromacy



## Original Color

16.3311, 0.3525, 0.3505

## Protanomaly

16.3347, 0.3419, 0.3530

## Deuteranomaly

16.1962, 0.3543, 0.3485

## Tritanomaly

16.4184, 0.3393, 0.3272

# Monochromacy



## Original Color

16.3311, 0.3525, 0.3505

## Achromatopsia

16.5132, 0.3127, 0.3290

## Achromatomaly

16.5226, 0.3258, 0.3370

# CSS Examples

## Text

The CSS property to change the color of the text to Yxy 16.3311, 0.3525, 0.3505 is called "color". The color property can be set on classes, ids or directly on the HTML element.

This example shows how text in the color `rgb(127, 109, 98)` looks like.

```
.text, #text, p{  
    color:rgb(127, 109, 98)  
}
```

If you want to add a text shadow in that color use the text-shadow property, you can generate a text shadow directly with our [CSS Text Shadow Generator](#).

Here you see how black text with a 4 pixel rgb(127, 109, 98) colored shadow looks like.

```
.shadow{ text-shadow: 4px 4px 2px rgb(127, 109, 98) }
```

## Border

The CSS property to change the border of an element to Yxy 16.3311, 0.3525, 0.3505 is called "border". The border property can be set on classes, ids or directly on the HTML element.

This example shows the color as border, it can be applied via the CSS property "border" or "border-color".

```
.border, #border, table{ border:4px solid rgb(127, 109, 98) }
```

If only the border color should be changed use the property `border-color`.

```
.border{ border-color:rgb(127, 109, 98) }
```

If you want to add a box shadow in that color use:

Here you see how a box with a 4 pixel `rgb(127, 109, 98)` colored shadow looks like.

```
.boxshadow{ -moz-box-shadow:4px 4px 4px  
4px rgb(127, 109, 98); -webkit-box-  
shadow:4px 4px 4px 4px rgb(127, 109, 98);  
box-shadow:4px 4px 4px 4px rgb(127, 109,  
98) }
```



# Background

The CSS property to change the background color of an element to Yxy 16.3311, 0.3525, 0.3505 is called "background". The background property can be set on classes, ids or directly on the HTML element.

```
.background, #background, body{  
background: rgb(127, 109, 98) }
```

If only the background color should be changed can be used:

```
.background{ background-color: rgb(127,  
109, 98) }
```

This example shows the color as background, it is applied via the CSS property "background".

To optimize and compress your CSS code, you can use our [online CSS compressor and optimizer](#) based on csstidy. If you want to create a linear or radial gradient as background or border, check our [CSS Gradient Generator](#).

Hey! You found this booklet interesting? Support Converting Colors with the new Membership Option!

The pro membership hides all ads, plus gives you double the colors in the color bucket, and more awesome pro features!

**[Learn more, Memberships starting at \\$2.50/m!](#)**

**Follow me  
on Twitter!**

@ConvertingColor