

Converting Colors

$Y_{xy}(16.7331, 0.3476, 0.3508)$

Have a look what the booklet for
Yxy(16.7331, 0.3476, 0.3508)
contains.

Yxy(16.7246, 0.3476, 0.3504)	3
Conversions	4
Details	6
Harmonies	12
Previews	24
Color Blindness Simulation	27
CSS Examples	30

Color

Yxy(16.7246, 0.3476, 0.3504)

Conversions

Conversions Part 1

Format	Color
Hex	7E6F64
RGB	126, 111, 100
RGB Percent	49%, 44%, 39%
CMY	0.5058, 0.5647, 0.6078
CMYK	0.00, 0.12, 0.21, 0.51
HSL	25°, 12%, 44%
HSV	25°, 21%, 49%
XYZ	16.5910, 16.7246, 14.4145
YIQ	114.2310, 12.4710, -0.2410

Conversions

Conversions Part 2

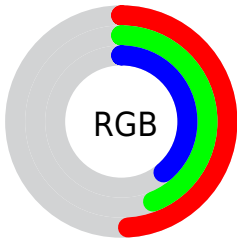
Format	Color
RYB	126, 119, 100
Decimal	8286052
CIELab	47.91, 3.96, 8.26
CIElCh	48, 9.158, 64.408
Yxy	16.7246, 0.3476, 0.3504
Android (android.graphics.Color)	4286476132 (0xFF7E6F64)
YUV	114.2310, -7.0159, 10.3214
Hunter-Lab	40.8957, 0.8480, 7.7291

Details

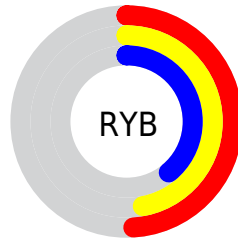
The Yxy color **16.7246, 0.3476, 0.3504** is a dark color, and the websafe version is hex **666666**. A complement of this color would be **16.4862, 0.2819, 0.3066**, and the grayscale version is **16.9199, 0.3127, 0.3290**.

A 20% lighter version of the original color is **38.0125, 0.3390, 0.3458**, and **5.3898, 0.3656, 0.3596** is the 20% darker color. If you saturate the color by 10%, you get **14.9756, 0.3684, 0.3614**, and if you desaturate by 10%, it is **18.6423, 0.3294, 0.3397**.

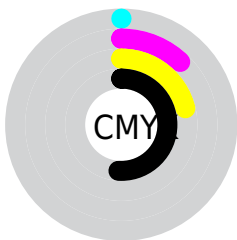
Distribution



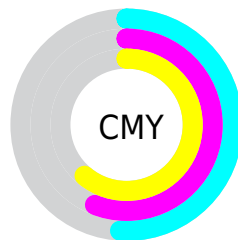
- Red (49%)
- Green (44%)
- Blue (39%)



- Red (49%)
- Yellow (47%)
- Blue (39%)



- Cyan (0%)
- Magenta (12%)
- Yellow (21%)
- Black (51%)



- Cyan (51%)
- Magenta (56%)
- Yellow (61%)

Brightness & Saturation Gradients

These gradients show how the Yxy color 16.7246, 0.3476, 0.3504 changes by changing the brightness by 10 percent. The first figure shows a shift by +10% for each color and the second figure -10%.

Similar to the brightness gradients but the following saturation gradients show a change of the Yxy color 16.7246, 0.3476, 0.3504 by changing the saturation by 10% instead.

■ 16.7246, 0.3476,
0.3504

■ 16.7246, 0.3476,
0.3504

■ 233.5803, 0.3271,
0.3381

■ 10.0383, 0.3541,
0.3542

■ 37.8517, 0.3392,
0.3454

■ 5.4244, 0.3636,
0.3596

■ 53.0612, 0.3364,
0.3437

■ 2.4983, 0.3787,
0.3678

■ 71.8807, 0.3341,
0.3424

■ 0.8758, 0.4268,
0.4010

■ 94.6945, 0.3322,
0.3412

■ 0.0000, 0.0000,
0.0000

■ 121.8869, 0.3306,
0.3402

■ 153.8424, 0.3293,

0.3394

190.9454, 0.3281,
0.3387

■ 16.7246, 0.3476,
0.3504

■ 16.7246, 0.3476,
0.3504

■ 14.9756, 0.3684,
0.3614

■ 18.6423, 0.3294,
0.3397

■ 13.3882, 0.3921,
0.3725

■ 20.7311, 0.3136,
0.3296

■ 11.9583, 0.4184,
0.3829

■ 22.9961, 0.3000,
0.3202

■ 10.6803, 0.4470,
0.3919

■ 25.4415, 0.2882,
0.3115

■ 9.5487, 0.4768,
0.3984

■ 28.0714, 0.2780,
0.3034

■ 8.5572, 0.5065,
0.4012

■ 30.8898, 0.2691,
0.2961

■ 7.6991, 0.5339,
0.3995

■ 33.9003, 0.2614,
0.2894

■ 7.0033, 0.5580,
0.3951

■ 37.1068, 0.2546,
0.2832

■ 40.5128, 0.2487,
0.2776

Harmonies

Analogous

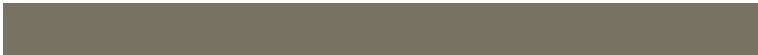
The Analogous color harmony consists of three colors that are next to each other on the color wheel.



16.7246, 0.3467, 0.3363



16.7246, 0.3476, 0.3504



16.7246, 0.3389, 0.3593

Triad

The Triadic color harmony groups three colors that are evenly spaced from another and form a triangle on the color wheel.



16.7246, 0.3476, 0.3504



16.7246, 0.2894, 0.3368



16.7246, 0.3015, 0.3000

Complementary

The Complementary color scheme is a pair of colors which are on the opposite of each other on the color wheel.



16.7246, 0.3476, 0.3504



16.4862, 0.2819, 0.3066

Split Complementary

Split-complementary colors differ from the complementary color scheme. The scheme consists of three colors, the original color and two neighbors of the complement color.



16.7246, 0.2867, 0.2994



16.7246, 0.3476, 0.3504



16.7246, 0.2799, 0.3201

Square

The Square scheme is like the rectangle color scheme, but the four colors are evenly spaced on the color wheel.



16.7246, 0.3476, 0.3504



16.7246, 0.3051, 0.3517



16.7246, 0.2790, 0.3065



16.7246, 0.3197, 0.3078

Rectangle

The Rectangle color scheme consists of four colors that form a rectangle on the color wheel.



16.7246, 0.3476, 0.3504



16.7246, 0.3290, 0.3608



16.7246, 0.2790, 0.3065



16.7246, 0.2960, 0.2989

Sweetspot

The Sweet Spot groups the original color and five complimentary colors.



16.7254, 0.3476, 0.3504



34.4194, 0.3220, 0.3351



14.7963, 0.3298, 0.2999



7.7878, 0.3228, 0.3356



63.8283, 0.3127, 0.3290



8.3535, 0.3127, 0.3290

Same Dimension

The Same Dimension uses a secret algorithm to generate beautiful new colors.



16.7254, 0.3476, 0.3504



27.8717, 0.3576, 0.3558



19.7341, 0.3431, 0.3741



4.6196, 0.3269, 0.3381



7.1751, 0.5582, 0.3950



0.0000, 0.0000, 0.0000

Inverse Universe

The Inverse Universe completely reimagines the original color for something new.



16.4862, 0.2819, 0.3066



27.3661, 0.2744, 0.3005



13.7559, 0.2802, 0.2795



4.5919, 0.2993, 0.3197



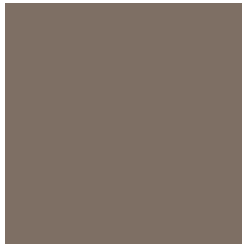
6.3961, 0.1859, 0.1890



0.0000, 0.0000, 0.0000

Previews

White Background



This preview shows how the Yxy color 16.7246, 0.3476, 0.3504 looks on a white background.

Color Contrast Check

Large Text (above 18pt) WCAG AA ✓ Pass

Any Text WCAG AA ✓ Pass

Large Text (above 18pt) WCAG AAA ✓ Pass

Any Text WCAG AAA × Fail

Black Background



This preview shows how the Yxy color 16.7246, 0.3476, 0.3504 looks on a black background.

Color Contrast Check

Large Text (above 18pt) WCAG AA ✓ Pass

Any Text WCAG AA × Fail

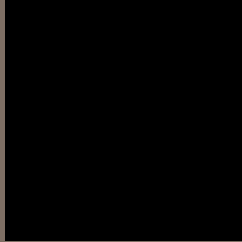
Large Text (above 18pt) WCAG AAA × Fail

Any Text WCAG AAA × Fail

If you want to check with other color combinations, try the [Color Contrast Checker](#).

Yxy 16.7246, 0.3476, 0.3504

Background



This preview shows how black text looks on a background with the Yxy color 16.7246, 0.3476, 0.3504.



This preview shows how white text looks on a background with the Yxy color 16.7246, 0.3476, 0.3504.

Color Blindness Simulation

Color vision deficiency is a very complex topic, and I could not describe the different causes any better than Wikipedia does, so if you want to learn more, you should check out their [article about color blindness](#).

Dichromacy



Original Color

16.7246, 0.3476, 0.3504

Protanopia

16.6718, 0.3359, 0.3530

Deuteranopia

16.8178, 0.3536, 0.3482



Tritanopia

16.8108, 0.3284, 0.3140

Trichromacy



Original Color

16.7246, 0.3476, 0.3504

Protanomaly

16.6655, 0.3403, 0.3508

Deuteranomaly

16.7391, 0.3522, 0.3483

Tritanomaly

16.8116, 0.3347, 0.3272

Monochromacy



Original Color

16.7246, 0.3476, 0.3504

Achromatopsia

16.8269, 0.3127, 0.3290

Achromatomaly

16.7659, 0.3243, 0.3370

CSS Examples

Text

The CSS property to change the color of the text to Yxy 16.7246, 0.3476, 0.3504 is called "color". The color property can be set on classes, ids or directly on the HTML element.

This example shows how text in the color `rgb(126, 111, 100)` looks like.

```
.text, #text, p{  
    color:rgb(126, 111, 100)  
}
```

If you want to add a text shadow in that color use the text-shadow property, you can generate a text shadow directly with our [CSS Text Shadow Generator](#).

Here you see how black text with a 4 pixel rgb(126, 111, 100) colored shadow looks like.

```
.shadow{ text-shadow: 4px 4px 2px rgb(126, 111, 100) }
```

Border

The CSS property to change the border of an element to Yxy 16.7246, 0.3476, 0.3504 is called "border". The border property can be set on classes, ids or directly on the HTML element.

This example shows the color as border, it can be applied via the CSS property "border" or "border-color".

```
.border, #border, table{ border:4px solid rgb(126, 111, 100) }
```

If only the border color should be changed use the property `border-color`.

```
.border{ border-color:rgb(126, 111, 100) }
```

If you want to add a box shadow in that color use:

Here you see how a box with a 4 pixel `rgb(126, 111, 100)` colored shadow looks like.

```
.boxshadow{ -moz-box-shadow:4px 4px 4px  
4px rgb(126, 111, 100); -webkit-box-  
shadow:4px 4px 4px 4px rgb(126, 111, 100);  
box-shadow:4px 4px 4px 4px rgb(126, 111,  
100) }
```


Background

The CSS property to change the background color of an element to Yxy 16.7246, 0.3476, 0.3504 is called "background". The background property can be set on classes, ids or directly on the HTML element.

```
.background, #background, body{  
background: rgb(126, 111, 100) }
```

If only the background color should be changed can be used:

```
.background{ background-color: rgb(126,  
111, 100) }
```

This example shows the color as background, it is applied via the CSS property "background".

To optimize and compress your CSS code, you can use our [online CSS compressor and optimizer](#) based on csstidy. If you want to create a linear or radial gradient as background or border, check our [CSS Gradient Generator](#).

Hey! You found this booklet interesting? Support Converting Colors with the new Membership Option!

The pro membership hides all ads, plus gives you double the colors in the color bucket, and more awesome pro features!

[Learn more, Memberships starting at \\$2.50/m!](#)

**Follow me
on Twitter!**

@ConvertingColor