

Converting Colors

$Yxy(16.8476, 0.3464, 0.3433)$

Have a look what the booklet for
Yxy(16.8476, 0.3464, 0.3433)
contains.

Yxy(16.9373, 0.3464, 0.3444)	3
Conversions	4
Details	6
Harmonies	12
Previews	24
Color Blindness Simulation	27
CSS Examples	30

Color

Yxy(16.9373, 0.3464, 0.3444)

Conversions

Conversions Part 1

Format	Color
Hex	806F67
RGB	128, 111, 103
RGB Percent	50%, 44%, 40%
CMY	0.4980, 0.5647, 0.5960
CMYK	0.00, 0.13, 0.20, 0.50
HSL	19°, 11%, 45%
HSV	19°, 20%, 50%
XYZ	17.0357, 16.9373, 15.2062
YIQ	115.1710, 12.7000, 1.1160

Conversions

Conversions Part 2

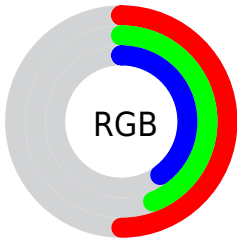
Format	Color
R_{YB}	128, 115, 103
Decimal	8417127
CIE _{Lab}	48.18, 5.27, 6.89
CIE _{LCh}	48, 8.675, 52.608
Yxy	16.9373, 0.3464, 0.3444
Android (android.graphics.Color)	4286607207 (0xFF806F67)
YUV	115.1710, -6.0003, 11.2510
Hunter-Lab	41.1550, 1.8670, 6.9016

Details

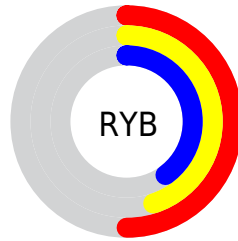
The Yxy color **16.9373, 0.3464, 0.3444** is a dark color, and the websafe version is hex **666666**. A complement of this color would be **17.8799, 0.2838, 0.3131**, and the grayscale version is **17.2153, 0.3127, 0.3290**.

A 20% lighter version of the original color is **38.3512, 0.3382, 0.3415**, and **5.5028, 0.3636, 0.3500** is the 20% darker color. If you saturate the color by 10%, you get **14.8915, 0.3681, 0.3528**, and if you desaturate by 10%, it is **19.2094, 0.3278, 0.3363**.

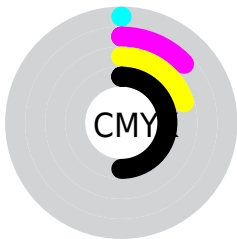
Distribution



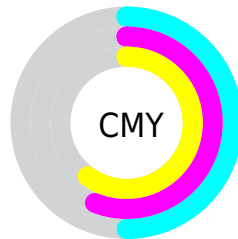
- Red (50%)
- Green (44%)
- Blue (40%)



- Red (50%)
- Yellow (45%)
- Blue (40%)



- Cyan (0%)
- Magenta (13%)
- Yellow (20%)
- Black (50%)



- Cyan (50%)
- Magenta (56%)
- Yellow (60%)

Brightness & Saturation Gradients

These gradients show how the Yxy color 16.9373, 0.3464, 0.3444 changes by changing the brightness by 10 percent. The first figure shows a shift by +10% for each color and the second figure -10%.

Similar to the brightness gradients but the following saturation gradients show a change of the Yxy color 16.9373, 0.3464, 0.3444 by changing the saturation by 10% instead.

■ 16.9373, 0.3464,
0.3444

■ 16.9373, 0.3464,
0.3444

234.8108, 0.3266,
0.3356

■ 10.1898, 0.3527,
0.3471

■ 38.2179, 0.3383,
0.3409

■ 5.5250, 0.3618,
0.3508

■ 53.5199, 0.3356,
0.3397

■ 2.5585, 0.3764,
0.3564

■ 72.4421, 0.3334,
0.3387

■ 0.9058, 0.4145,
0.3761

■ 95.3689, 0.3316,
0.3379

■ 0.0000, 0.0000,
0.0000

122.6848, 0.3300,
0.3372

154.7742, 0.3287,

0.3366

192.0214, 0.3276,
0.3361

■ 16.9373, 0.3464,
0.3444

■ 16.9373, 0.3464,
0.3444

■ 14.8915, 0.3681,
0.3528

■ 19.2094, 0.3278,
0.3363

■ 13.0625, 0.3934,
0.3613

■ 21.7121, 0.3120,
0.3287

■ 11.4438, 0.4222,
0.3693

■ 24.4527, 0.2986,
0.3216

■ 10.0273, 0.4543,
0.3760

■ 27.4373, 0.2871,
0.3151

■ 8.8047, 0.4886,
0.3806

■ 30.6720, 0.2774,
0.3091

■ 7.7670, 0.5233,
0.3819

■ 34.1624, 0.2690,
0.3036

■ 6.9040, 0.5555,
0.3790

■ 37.9141, 0.2618,
0.2987

■ 6.1995, 0.5845,
0.3732

■ 41.9326, 0.2555,
0.2941

■ 6.1695, 0.5859,
0.3730

■ 46.2229, 0.2501,
0.2900

Harmonies

Analogous

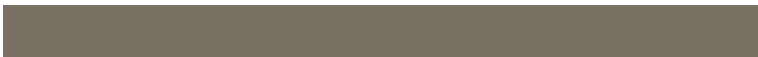
The Analogous color harmony consists of three colors that are next to each other on the color wheel.



16.9373, 0.3419, 0.3302



16.9373, 0.3464, 0.3444



16.9373, 0.3416, 0.3551

Triad

The Triadic color harmony groups three colors that are evenly spaced from another and form a triangle on the color wheel.



16.9373, 0.3464, 0.3444



16.9373, 0.2960, 0.3424



16.9373, 0.2961, 0.3005

Complementary

The Complementary color scheme is a pair of colors which are on the opposite of each other on the color wheel.



16.9373, 0.3464, 0.3444



17.8799, 0.2838, 0.3131

Split Complementary

Split-complementary colors differ from the complementary color scheme. The scheme consists of three colors, the original color and two neighbors of the complement color.



16.9373, 0.2844, 0.3028



16.9373, 0.3464, 0.3444



16.9373, 0.2844, 0.3267

Square

The Square scheme is like the rectangle color scheme, but the four colors are evenly spaced on the color wheel.



16.9373, 0.3464, 0.3444



16.9373, 0.3123, 0.3544



16.9373, 0.2802, 0.3123



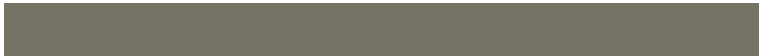
16.9373, 0.3124, 0.3053

Rectangle

The Rectangle color scheme consists of four colors that form a rectangle on the color wheel.



16.9373, 0.3464, 0.3444



16.9373, 0.3339, 0.3586



16.9373, 0.2802, 0.3123



16.9373, 0.2915, 0.3004

Sweetspot

The Sweet Spot groups the original color and five complimentary colors.



16.9381, 0.3464, 0.3444



35.2644, 0.3222, 0.3336



15.6507, 0.3253, 0.2969



8.2037, 0.3230, 0.3340



65.5931, 0.3127, 0.3290



8.8982, 0.3127, 0.3290

Same Dimension

The Same Dimension uses a secret algorithm to generate beautiful new colors.



16.9381, 0.3464, 0.3444



28.3301, 0.3547, 0.3478



19.8402, 0.3422, 0.3673



4.5513, 0.3271, 0.3359



6.1193, 0.5859, 0.3730



0.0000, 0.0000, 0.0000

Inverse Universe

The Inverse Universe completely reimagines the original color for something new.



17.8799, 0.2838, 0.3131



30.2722, 0.2779, 0.3094



15.0826, 0.2824, 0.2876



4.6623, 0.2993, 0.3220



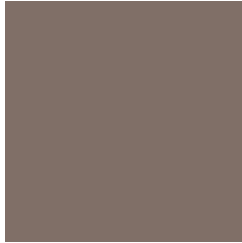
8.3210, 0.1957, 0.2246



0.0000, 0.0000, 0.0000

Previews

White Background



This preview shows how the Yxy color 16.9373, 0.3464, 0.3444 looks on a white background.

Color Contrast Check

Large Text (above 18pt) WCAG AA ✓ Pass

Any Text WCAG AA ✓ Pass

Large Text (above 18pt) WCAG AAA ✓ Pass

Any Text WCAG AAA × Fail

Black Background



This preview shows how the Yxy color 16.9373, 0.3464, 0.3444 looks on a black background.

Color Contrast Check

Large Text (above 18pt) WCAG AA ✓ Pass

Any Text WCAG AA × Fail

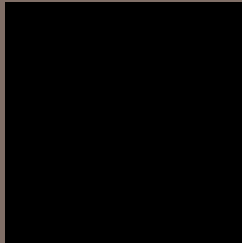
Large Text (above 18pt) WCAG AAA × Fail

Any Text WCAG AAA × Fail

If you want to check with other color combinations, try the [Color Contrast Checker](#).

Yxy 16.9373, 0.3464, 0.3444

Background



This preview shows how black text looks on a background with the Yxy color 16.9373, 0.3464, 0.3444.

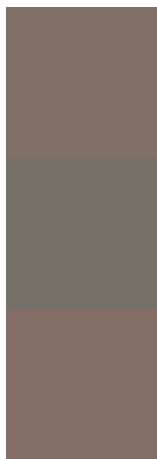


This preview shows how white text looks on a background with the Yxy color 16.9373, 0.3464, 0.3444.

Color Blindness Simulation

Color vision deficiency is a very complex topic, and I could not describe the different causes any better than Wikipedia does, so if you want to learn more, you should check out their [article about color blindness](#).

Dichromacy



Original Color

16.9373, 0.3464, 0.3444

Protanopia

16.9765, 0.3305, 0.3469

Deuteranopia

16.8770, 0.3496, 0.3424



Tritanopia

16.9675, 0.3311, 0.3141

Trichromacy



Original Color

16.9373, 0.3464, 0.3444

Protanomaly

16.9473, 0.3361, 0.3467

Deuteranomaly

16.7983, 0.3482, 0.3425

Tritanomaly

16.9888, 0.3361, 0.3253

Monochromacy



Original Color

16.9373, 0.3464, 0.3444

Achromatopsia

17.1441, 0.3127, 0.3290

Achromatomaly

17.1754, 0.3243, 0.3349

CSS Examples

Text

The CSS property to change the color of the text to Yxy 16.9373, 0.3464, 0.3444 is called "color". The color property can be set on classes, ids or directly on the HTML element.

This example shows how text in the color `rgb(128, 111, 103)` looks like.

```
.text, #text, p{  
    color:rgb(128, 111, 103)  
}
```

If you want to add a text shadow in that color use the text-shadow property, you can generate a text shadow directly with our [CSS Text Shadow Generator](#).

Here you see how black text with a 4 pixel rgb(128, 111, 103) colored shadow looks like.

```
.shadow{ text-shadow: 4px 4px 2px rgb(128, 111, 103) }
```

Border

The CSS property to change the border of an element to Yxy 16.9373, 0.3464, 0.3444 is called "border". The border property can be set on classes, ids or directly on the HTML element.

This example shows the color as border, it can be applied via the CSS property "border" or "border-color".

```
.border, #border, table{ border:4px solid rgb(128, 111, 103) }
```

If only the border color should be changed use the property `border-color`.

```
.border{ border-color:rgb(128, 111, 103) }
```

If you want to add a box shadow in that color use:

Here you see how a box with a 4 pixel `rgb(128, 111, 103)` colored shadow looks like.

```
.boxshadow{ -moz-box-shadow:4px 4px 4px  
4px rgb(128, 111, 103); -webkit-box-  
shadow:4px 4px 4px 4px rgb(128, 111, 103);  
box-shadow:4px 4px 4px 4px rgb(128, 111,  
103) }
```


Background

The CSS property to change the background color of an element to Yxy 16.9373, 0.3464, 0.3444 is called "background". The background property can be set on classes, ids or directly on the HTML element.

```
.background, #background, body{  
background: rgb(128, 111, 103) }
```

If only the background color should be changed can be used:

```
.background{ background-color: rgb(128,  
111, 103) }
```

This example shows the color as background, it is applied via the CSS property "background".

To optimize and compress your CSS code, you can use our [online CSS compressor and optimizer](#) based on csstidy. If you want to create a linear or radial gradient as background or border, check our [CSS Gradient Generator](#).

Hey! You found this booklet interesting? Support Converting Colors with the new Membership Option!

The pro membership hides all ads, plus gives you double the colors in the color bucket, and more awesome pro features!

[Learn more, Memberships starting at \\$2.50/m!](#)

**Follow me
on Twitter!**

@ConvertingColor