

Converting Colors

$Y_{xy}(17.0002, 0.3460, 0.3477)$

Have a look what the booklet for
Yxy(17.0002, 0.3460, 0.3477)
contains.

Yxy(17.0597, 0.3460, 0.3483)	3
Conversions	4
Details	6
Harmonies	12
Previews	24
Color Blindness Simulation	27
CSS Examples	30

Color

Yxy(17.0597, 0.3460, 0.3483)

Conversions

Conversions Part 1

Format	Color
Hex	7F7066
RGB	127, 112, 102
RGB Percent	50%, 44%, 40%
CMY	0.5019, 0.5608, 0.5999
CMYK	0.00, 0.12, 0.20, 0.50
HSL	24°, 11%, 45%
HSV	24°, 20%, 50%
XYZ	16.9470, 17.0597, 14.9732
YIQ	115.3450, 12.1500, 0.0700

Conversions

Conversions Part 2

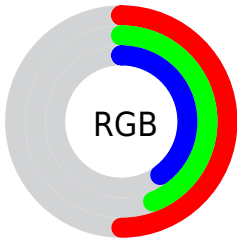
Format	Color
RYB	127, 119, 102
Decimal	8351846
CIELab	48.34, 4.11, 7.69
CIElCh	48, 8.722, 61.860
Yxy	17.0597, 0.3460, 0.3483
Android (android.graphics.Color)	4286541926 (0xFF7F7066)
YUV	115.3450, -6.5791, 10.2214
Hunter-Lab	41.3034, 0.9588, 7.4188

Details

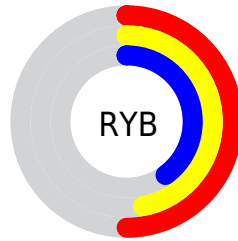
The Yxy color **17.0597, 0.3460, 0.3483** is a dark color, and the websafe version is hex **666666**. A complement of this color would be **17.0883, 0.2834, 0.3089**, and the grayscale version is **17.2733, 0.3127, 0.3290**.

A 20% lighter version of the original color is **38.5541, 0.3380, 0.3443**, and **5.5623, 0.3627, 0.3562** is the 20% darker color. If you saturate the color by 10%, you get **15.2145, 0.3669, 0.3588**, and if you desaturate by 10%, it is **19.0878, 0.3279, 0.3382**.

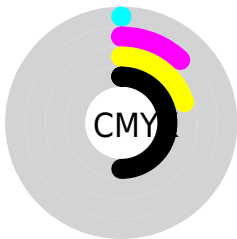
Distribution



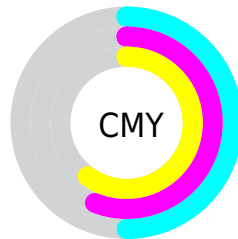
- Red (50%)
- Green (44%)
- Blue (40%)



- Red (50%)
- Yellow (47%)
- Blue (40%)



- Cyan (0%)
- Magenta (12%)
- Yellow (20%)
- Black (50%)



- Cyan (50%)
- Magenta (56%)
- Yellow (60%)

Brightness & Saturation Gradients

These gradients show how the Yxy color 17.0597, 0.3460, 0.3483 changes by changing the brightness by 10 percent. The first figure shows a shift by +10% for each color and the second figure -10%.

Similar to the brightness gradients but the following saturation gradients show a change of the Yxy color 17.0597, 0.3460, 0.3483 by changing the saturation by 10% instead.

■ 17.0597, 0.3460,
0.3483

■ 17.0597, 0.3460,
0.3483

235.5162, 0.3265,
0.3372

■ 10.2771, 0.3522,
0.3517

■ 38.4284, 0.3381,
0.3439

■ 5.5830, 0.3612,
0.3565

■ 53.7832, 0.3353,
0.3423

■ 2.5932, 0.3754,
0.3637

■ 72.7643, 0.3332,
0.3411

■ 0.9233, 0.4147,
0.3887

■ 95.7559, 0.3314,
0.3400

■ 0.0000, 0.0000,
0.0000

123.1425, 0.3299,
0.3392

155.3085, 0.3286,

0.3384

192.6383, 0.3275,
0.3378

■ 17.0597, 0.3460,
0.3483

■ 17.0597, 0.3460,
0.3483

■ 15.2145, 0.3669,
0.3588

■ 19.0878, 0.3279,
0.3382

■ 13.5445, 0.3907,
0.3692

■ 21.3015, 0.3123,
0.3287

■ 12.0451, 0.4174,
0.3792

■ 23.7063, 0.2988,
0.3199

■ 10.7102, 0.4466,
0.3878

■ 26.3070, 0.2872,
0.3117

■ 9.5338, 0.4775,
0.3941

■ 29.1080, 0.2772,
0.3042

■ 8.5090, 0.5083,
0.3968

■ 32.1136, 0.2685,
0.2973

■ 7.6284, 0.5371,
0.3951

■ 35.3281, 0.2609,
0.2910

■ 6.8782, 0.5637,
0.3901

■ 38.7553, 0.2544,
0.2852

■ 6.8564, 0.5645,
0.3899

■ 42.3994, 0.2486,
0.2800

Harmonies

Analogous

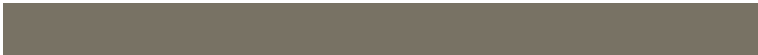
The Analogous color harmony consists of three colors that are next to each other on the color wheel.



17.0597, 0.3443, 0.3347



17.0597, 0.3460, 0.3483



17.0597, 0.3385, 0.3572

Triad

The Triadic color harmony groups three colors that are evenly spaced from another and form a triangle on the color wheel.



17.0597, 0.3460, 0.3483



17.0597, 0.2917, 0.3377



17.0597, 0.3007, 0.3012

Complementary

The Complementary color scheme is a pair of colors which are on the opposite of each other on the color wheel.



17.0597, 0.3460, 0.3483



17.0883, 0.2834, 0.3089

Split Complementary

Split-complementary colors differ from the complementary color scheme. The scheme consists of three colors, the original color and two neighbors of the complement color.



17.0597, 0.2872, 0.3012



17.0597, 0.3460, 0.3483



17.0597, 0.2821, 0.3219

Square

The Square scheme is like the rectangle color scheme, but the four colors are evenly spaced on the color wheel.



17.0597, 0.3460, 0.3483



17.0597, 0.3070, 0.3514



17.0597, 0.2805, 0.3086



17.0597, 0.3178, 0.3080

Rectangle

The Rectangle color scheme consists of four colors that form a rectangle on the color wheel.



17.0597, 0.3460, 0.3483



17.0597, 0.3294, 0.3591



17.0597, 0.2805, 0.3086



17.0597, 0.2956, 0.3004

Sweetspot

The Sweet Spot groups the original color and five complimentary colors.



17.0605, 0.3460, 0.3483



35.5378, 0.3221, 0.3348



15.3131, 0.3277, 0.2997



8.2728, 0.3229, 0.3353



65.5931, 0.3127, 0.3290



8.8982, 0.3127, 0.3290

Same Dimension

The Same Dimension uses a secret algorithm to generate beautiful new colors.



17.0605, 0.3460, 0.3483



28.8883, 0.3558, 0.3534



19.9129, 0.3419, 0.3706



4.6042, 0.3269, 0.3377



6.9105, 0.5646, 0.3899



0.0000, 0.0000, 0.0000

Inverse Universe

The Inverse Universe completely reimagines the original color for something new.



17.0883, 0.2834, 0.3089



28.9471, 0.2760, 0.3033



14.4472, 0.2820, 0.2837



4.6076, 0.2993, 0.3202



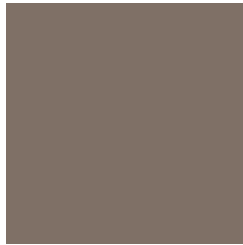
6.7956, 0.1881, 0.1970



0.0000, 0.0000, 0.0000

Previews

White Background



This preview shows how the Yxy color 17.0597, 0.3460, 0.3483 looks on a white background.

Color Contrast Check

Large Text (above 18pt) WCAG AA ✓ Pass

Any Text WCAG AA ✓ Pass

Large Text (above 18pt) WCAG AAA ✓ Pass

Any Text WCAG AAA × Fail

Black Background



This preview shows how the Yxy color 17.0597, 0.3460, 0.3483 looks on a black background.

Color Contrast Check

Large Text (above 18pt) WCAG AA ✓ Pass

Any Text WCAG AA × Fail

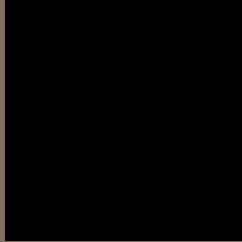
Large Text (above 18pt) WCAG AAA × Fail

Any Text WCAG AAA × Fail

If you want to check with other color combinations, try the [Color Contrast Checker](#).

Yxy 17.0597, 0.3460, 0.3483

Background



This preview shows how black text looks on a background with the Yxy color 17.0597, 0.3460, 0.3483.



This preview shows how white text looks on a background with the Yxy color 17.0597, 0.3460, 0.3483.

Color Blindness Simulation

Color vision deficiency is a very complex topic, and I could not describe the different causes any better than Wikipedia does, so if you want to learn more, you should check out their [article about color blindness](#).

Dichromacy



Original Color

17.0597, 0.3460, 0.3483

Protanopia

17.0070, 0.3344, 0.3508

Deuteranopia

17.1535, 0.3520, 0.3461



Tritanopia

17.1270, 0.3283, 0.3141

Trichromacy



Original Color

17.0597, 0.3460, 0.3483

Protanomaly

17.0005, 0.3388, 0.3486

Deuteranomaly

17.0740, 0.3506, 0.3462

Tritanomaly

17.1279, 0.3345, 0.3272

Monochromacy



Original Color

17.0597, 0.3460, 0.3483

Achromatopsia

17.1441, 0.3127, 0.3290

Achromatomaly

17.0824, 0.3242, 0.3369

CSS Examples

Text

The CSS property to change the color of the text to Yxy 17.0597, 0.3460, 0.3483 is called "color". The color property can be set on classes, ids or directly on the HTML element.

This example shows how text in the color `rgb(127, 112, 102)` looks like.

```
.text, #text, p{  
    color:rgb(127, 112, 102)  
}
```

If you want to add a text shadow in that color use the text-shadow property, you can generate a text shadow directly with our [CSS Text Shadow Generator](#).

Here you see how black text with a 4 pixel rgb(127, 112, 102) colored shadow looks like.

```
.shadow{ text-shadow: 4px 4px 2px rgb(127, 112, 102) }
```

Border

The CSS property to change the border of an element to Yxy 17.0597, 0.3460, 0.3483 is called "border". The border property can be set on classes, ids or directly on the HTML element.

This example shows the color as border, it can be applied via the CSS property "border" or "border-color".

```
.border, #border, table{ border:4px solid rgb(127, 112, 102) }
```

If only the border color should be changed use the property `border-color`.

```
.border{ border-color:rgb(127, 112, 102) }
```

If you want to add a box shadow in that color use:

Here you see how a box with a 4 pixel `rgb(127, 112, 102)` colored shadow looks like.

```
.boxshadow{ -moz-box-shadow:4px 4px 4px  
4px rgb(127, 112, 102); -webkit-box-  
shadow:4px 4px 4px 4px rgb(127, 112, 102);  
box-shadow:4px 4px 4px 4px rgb(127, 112,  
102) }
```


Background

The CSS property to change the background color of an element to Yxy 17.0597, 0.3460, 0.3483 is called "background". The background property can be set on classes, ids or directly on the HTML element.

```
.background, #background, body{  
background: rgb(127, 112, 102) }
```

If only the background color should be changed can be used:

```
.background{ background-color: rgb(127,  
112, 102) }
```

This example shows the color as background, it is applied via the CSS property "background".

To optimize and compress your CSS code, you can use our [online CSS compressor and optimizer](#) based on csstidy. If you want to create a linear or radial gradient as background or border, check our [CSS Gradient Generator](#).

Hey! You found this booklet interesting? Support Converting Colors with the new Membership Option!

The pro membership hides all ads, plus gives you double the colors in the color bucket, and more awesome pro features!

[Learn more, Memberships starting at \\$2.50/m!](#)

**Follow me
on Twitter!**

@ConvertingColor