

Converting Colors

$Y_{xy}(21.9600, 0.4066, 0.3742)$

Have a look what the booklet for
Yxy(21.9600, 0.4066, 0.3742)
contains.

| | |
|---|----|
| Yxy(21.8415, 0.4068, 0.3734) | 3 |
| Conversions | 4 |
| Details | 6 |
| Harmonies | 12 |
| Previews | 24 |
| Color Blindness Simulation | 27 |
| CSS Examples | 30 |

Color

Yxy(21.8415, 0.4068, 0.3734)

Conversions

Conversions Part 1

| Format | Color |
|---------------|---------------------------|
| Hex | A4775B |
| RGB | 164, 119, 91 |
| RGB Percent | 64%, 47%, 36% |
| CMY | 0.3568, 0.5333, 0.6432 |
| CMYK | 0.00, 0.27, 0.45, 0.36 |
| HSL | 23°, 29%, 50% |
| HSV | 23°, 45%, 64% |
| XYZ | 23.7952, 21.8415, 12.8569 |
| YIQ | 129.2630, 35.8080, 0.8320 |

Conversions

Conversions Part 2

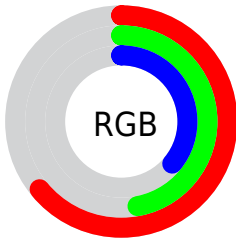
| Format | Color |
|-------------------------------------|--|
| RYB | 164, 136, 91 |
| Decimal | 10778459 |
| CIELab | 53.86, 14.01, 22.33 |
| CIELCh | 54, 26.360, 57.884 |
| Yxy | 21.8415, 0.4068, 0.3734 |
| Android (android.graphics.Color) | 4288968539 (0xFFA4775B) |
| YUV | 129.2630, -18.8637, 30.4643 |
| Hunter-Lab | 46.7349, 9.0977, 16.4036 |

Details

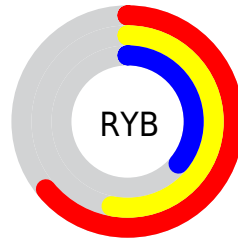
The Yxy color **21.8415, 0.4068, 0.3734** is a dark color, and the websafe version is hex **996633**. A complement of this color would be **22.5098, 0.2454, 0.2788**, and the grayscale version is **22.1084, 0.3127, 0.3290**.

A 20% lighter version of the original color is **46.4211, 0.3868, 0.3650**, and **7.8848, 0.4435, 0.3845** is the 20% darker color. If you saturate the color by 10%, you get **19.3103, 0.4363, 0.3825**, and if you desaturate by 10%, it is **24.6926, 0.3803, 0.3633**.

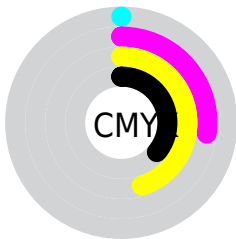
Distribution



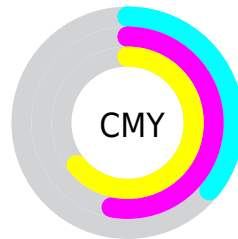
- Red (64%)
- Green (47%)
- Blue (36%)



- Red (64%)
- Yellow (53%)
- Blue (36%)



- Cyan (0%)
- Magenta (27%)
- Yellow (45%)
- Black (36%)





- Cyan (36%)
- Magenta (53%)
- Yellow (64%)

Brightness & Saturation Gradients


These gradients show how the Yxy color 21.8415, 0.4068, 0.3734 changes by changing the brightness by 10 percent. The first figure shows a shift by +10% for each color and the second figure -10%.


Similar to the brightness gradients but the following saturation gradients show a change of the Yxy color 21.8415, 0.4068, 0.3734 by changing the saturation by 10% instead.


 21.8415, 0.4068,
0.3734


 21.8415, 0.4068,
0.3734


261.7174, 0.3537,
0.3503

 13.7405, 0.4223,
0.3791


 46.4839, 0.3859,
0.3649


 7.9404, 0.4435,
0.3860


 63.7941, 0.3785,
0.3618

 4.0568, 0.4739,
0.3941

 84.9427, 0.3725,
0.3591

 1.7054, 0.5491,
0.4237

 110.3143, 0.3675,
0.3568

 0.4272, 0.6365,
0.3635

140.2931, 0.3632,
0.3548

 0.0000, 0.0000,
0.0000

175.2637, 0.3596,

0.3531

215.6103, 0.3564,
0.3516

■ 21.8415, 0.4068,
0.3734

■ 21.8415, 0.4068,
0.3734

■ 19.3103, 0.4363,
0.3825

■ 24.6926, 0.3803,
0.3633

■ 17.0838, 0.4680,
0.3896

■ 27.8717, 0.3571,
0.3530

■ 15.1501, 0.5005,
0.3935

■ 31.3907, 0.3370,
0.3428

■ 13.4951, 0.5317,
0.3930

■ 35.2597, 0.3197,
0.3332

■ 12.1031, 0.5589,
0.3875

■ 39.4884, 0.3049,
0.3241

■ 11.4394, 0.5727,
0.3835

■ 44.0861, 0.2922,
0.3158

■ 49.0620, 0.2813,
0.3081

■ 54.4245, 0.2719,
0.3011

■ 60.1821, 0.2638,
0.2948

Harmonies

Analogous

The Analogous color harmony consists of three colors that are next to each other on the color wheel.



21.8415, 0.3994, 0.3360



21.8415, 0.4068, 0.3734



21.8415, 0.3871, 0.4034

Triad

The Triadic color harmony groups three colors that are evenly spaced from another and form a triangle on the color wheel.



21.8415, 0.4068, 0.3734



21.8415, 0.2593, 0.3591



21.8415, 0.2733, 0.2549

Complementary

The Complementary color scheme is a pair of colors which are on the opposite of each other on the color wheel.



21.8415, 0.4068, 0.3734



22.5098, 0.2454, 0.2788

Split Complementary

Split-complementary colors differ from the complementary color scheme. The scheme consists of three colors, the original color and two neighbors of the complement color.



21.8415, 0.2406, 0.2556



21.8415, 0.4068, 0.3734



21.8415, 0.2329, 0.3120

Square

The Square scheme is like the rectangle color scheme, but the four colors are evenly spaced on the color wheel.



21.8415, 0.4068, 0.3734



21.8415, 0.3011, 0.3991



21.8415, 0.2265, 0.2749



21.8415, 0.3190, 0.2708

Rectangle

The Rectangle color scheme consists of four colors that form a rectangle on the color wheel.



21.8415, 0.4068, 0.3734



21.8415, 0.3625, 0.4139



21.8415, 0.2265, 0.2749



21.8415, 0.2606, 0.2532

Sweetspot

The Sweet Spot groups the original color and five complimentary colors.



21.8426, 0.4068, 0.3734



57.8361, 0.3346, 0.3416



17.1515, 0.3559, 0.2598



12.3339, 0.3386, 0.3437



82.7571, 0.3127, 0.3290



14.7319, 0.3127, 0.3290

Same Dimension

The Same Dimension uses a secret algorithm to generate beautiful new colors.



21.8426, 0.4068, 0.3734



35.2759, 0.4347, 0.3821



32.2526, 0.3824, 0.4252



7.5107, 0.3276, 0.3377



8.8573, 0.5710, 0.3848



0.2758, 0.5070, 0.4356

Inverse Universe

The Inverse Universe completely reimagines the original color for something new.



22.5098, 0.2454, 0.2788



36.6045, 0.2323, 0.2658



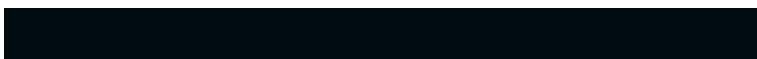
13.9246, 0.2337, 0.2096



7.5525, 0.2987, 0.3202



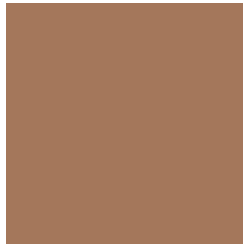
9.2974, 0.1891, 0.2007



0.2826, 0.2035, 0.2526

Previews

White Background



This preview shows how the Yxy color 21.8415, 0.4068, 0.3734 looks on a white background.

Color Contrast Check

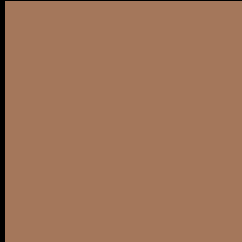
Large Text (above 18pt) WCAG AA ✓ Pass

Any Text WCAG AA × Fail

Large Text (above 18pt) WCAG AAA × Fail

Any Text WCAG AAA × Fail

Black Background



This preview shows how the Yxy color 21.8415, 0.4068, 0.3734 looks on a black background.

Color Contrast Check

Large Text (above 18pt) WCAG AA ✓ Pass

Any Text WCAG AA ✓ Pass

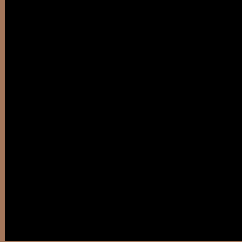
Large Text (above 18pt) WCAG AAA ✓ Pass

Any Text WCAG AAA × Fail

If you want to check with other color combinations, try the [Color Contrast Checker](#).

Yxy 21.8415, 0.4068, 0.3734

Background



This preview shows how black text looks on a background with the Yxy color 21.8415, 0.4068, 0.3734.



This preview shows how white text looks on a background with the Yxy color 21.8415, 0.4068, 0.3734.

Color Blindness Simulation

Color vision deficiency is a very complex topic, and I could not describe the different causes any better than Wikipedia does, so if you want to learn more, you should check out their [article about color blindness](#).

Dichromacy



Original Color

21.8415, 0.4068, 0.3734

Protanopia

21.9300, 0.3622, 0.3894

Deuteranopia

22.0235, 0.3916, 0.3854



Tritanopia

21.9070, 0.3707, 0.3167

Trichromacy



Original Color

21.8415, 0.4068, 0.3734

Protanomaly

21.6784, 0.3771, 0.3823

Deuteranomaly

21.9264, 0.3982, 0.3811

Tritanomaly

21.7455, 0.3850, 0.3371

Monochromacy



Original Color

21.8415, 0.4068, 0.3734

Achromatopsia

21.9526, 0.3127, 0.3290

Achromatomaly

21.6558, 0.3453, 0.3465

CSS Examples

Text

The CSS property to change the color of the text to Yxy 21.8415, 0.4068, 0.3734 is called "color". The color property can be set on classes, ids or directly on the HTML element.

This example shows how text in the color `rgb(164, 119, 91)` looks like.

```
.text, #text, p{  
    color:rgb(164, 119, 91)  
}
```

If you want to add a text shadow in that color use the text-shadow property, you can generate a text shadow directly with our [CSS Text Shadow Generator](#).

Here you see how black text with a 4 pixel rgb(164, 119, 91) colored shadow looks like.

```
.shadow{ text-shadow: 4px 4px 2px rgb(164, 119, 91) }
```

Border

The CSS property to change the border of an element to Yxy 21.8415, 0.4068, 0.3734 is called "border". The border property can be set on classes, ids or directly on the HTML element.

This example shows the color as border, it can be applied via the CSS property "border" or "border-color".

```
.border, #border, table{ border:4px solid rgb(164, 119, 91) }
```

If only the border color should be changed use the property `border-color`.

```
.border{ border-color:rgb(164, 119, 91) }
```

If you want to add a box shadow in that color use:

Here you see how a box with a 4 pixel `rgb(164, 119, 91)` colored shadow looks like.

```
.boxshadow{ -moz-box-shadow:4px 4px 4px  
4px rgb(164, 119, 91); -webkit-box-  
shadow:4px 4px 4px 4px rgb(164, 119, 91);  
box-shadow:4px 4px 4px 4px rgb(164, 119,  
91) }
```


Background

The CSS property to change the background color of an element to Yxy 21.8415, 0.4068, 0.3734 is called "background". The background property can be set on classes, ids or directly on the HTML element.

```
.background, #background, body{  
background: rgb(164, 119, 91) }
```

If only the background color should be changed can be used:

```
.background{ background-color: rgb(164,  
119, 91) }
```

This example shows the color as background, it is applied via the CSS property "background".

To optimize and compress your CSS code, you can use our [online CSS compressor and optimizer](#) based on csstidy. If you want to create a linear or radial gradient as background or border, check our [CSS Gradient Generator](#).

Hey! You found this booklet interesting? Support Converting Colors with the new Membership Option!

The pro membership hides all ads, plus gives you double the colors in the color bucket, and more awesome pro features!

[Learn more, Memberships starting at \\$2.50/m!](#)

**Follow me
on Twitter!**

@ConvertingColor