

Converting Colors

$Y_{xy}(22.0718, 0.4228, 0.3815)$

Have a look what the booklet for
Yxy(22.0718, 0.4228, 0.3815)
contains.

Yxy(22.0320, 0.4227, 0.3810)	3
Conversions	4
Details	6
Harmonies	12
Previews	24
Color Blindness Simulation	27
CSS Examples	30

Color

Yxy(22.0320, 0.4227, 0.3810)

Conversions

Conversions Part 1

Format	Color
Hex	A97654
RGB	169, 118, 84
RGB Percent	66%, 46%, 33%
CMY	0.3372, 0.5373, 0.6706
CMYK	0.00, 0.30, 0.50, 0.34
HSL	24°, 34%, 50%
HSV	24°, 50%, 66%
XYZ	24.4434, 22.0320, 11.3514
YIQ	129.3730, 41.3100, 0.2380

Conversions

Conversions Part 2

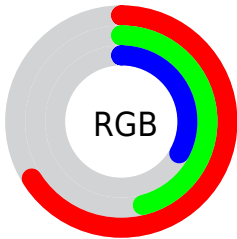
Format	Color
RYB	169, 141, 84
Decimal	11105876
CIELab	54.06, 15.98, 26.67
CIELCh	54, 31.085, 59.071
Yxy	22.0320, 0.4227, 0.3810
Android (android.graphics.Color)	4289295956 (0xFFA97654)
YUV	129.3730, -22.3689, 34.7529
Hunter-Lab	46.9383, 10.8130, 18.5183

Details

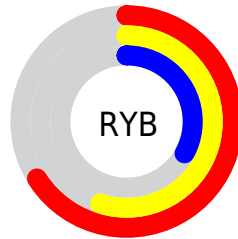
The Yxy color **22.0320, 0.4227, 0.3810** is a dark color, and the websafe version is hex **996633**. A complement of this color would be **22.0829, 0.2366, 0.2682**, and the grayscale version is **22.1606, 0.3127, 0.3290**.

A 20% lighter version of the original color is **46.6394, 0.3984, 0.3713**, and **7.9736, 0.4647, 0.3934** is the 20% darker color. If you saturate the color by 10%, you get **19.5377, 0.4531, 0.3895**, and if you desaturate by 10%, it is **24.8493, 0.3948, 0.3710**.

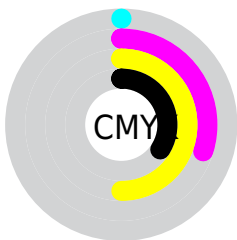
Distribution



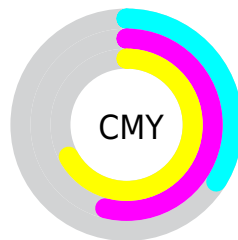
- Red (66%)
- Green (46%)
- Blue (33%)



- Red (66%)
- Yellow (55%)
- Blue (33%)



- Cyan (0%)
- Magenta (30%)
- Yellow (50%)
- Black (34%)





- Cyan (34%)
- Magenta (54%)
- Yellow (67%)

Brightness & Saturation Gradients


These gradients show how the Yxy color 22.0320, 0.4227, 0.3810 changes by changing the brightness by 10 percent. The first figure shows a shift by +10% for each color and the second figure -10%.


Similar to the brightness gradients but the following saturation gradients show a change of the Yxy color 22.0320, 0.4227, 0.3810 by changing the saturation by 10% instead.


 22.0320, 0.4227,
0.3810


 22.0320, 0.4227,
0.3810


262.7133, 0.3609,
0.3545


 13.8804, 0.4404,
0.3871


 46.7989, 0.3986,
0.3716

 8.0375, 0.4642,
0.3942


 64.1830, 0.3900,
0.3679


 4.1190, 0.4975,
0.4014

 85.4133, 0.3830,
0.3648

 1.7403, 0.5740,
0.4260

 110.8744, 0.3771,
0.3622

 0.4496, 0.6451,
0.3549

 140.9505, 0.3721,
0.3599

 0.0000, 0.0000,
0.0000

176.0261, 0.3679,

0.3579

216.4856, 0.3642,
0.3561

■ 22.0320, 0.4227,
0.3810

■ 22.0320, 0.4227,
0.3810

■ 19.5377, 0.4531,
0.3895

■ 24.8493, 0.3948,
0.3710

■ 17.3503, 0.4848,
0.3952

■ 27.9983, 0.3700,
0.3603

■ 15.4572, 0.5161,
0.3969

■ 31.4912, 0.3482,
0.3495

■ 13.8430, 0.5446,
0.3937

■ 35.3388, 0.3294,
0.3391

■ 12.5215, 0.5686,
0.3868

■ 39.5513, 0.3132,
0.3293

■ 44.1383, 0.2993,
0.3202

■ 49.1092, 0.2873,
0.3117

■ 54.4731, 0.2770,
0.3040

■ 60.2386, 0.2682,
0.2970

Harmonies

Analogous

The Analogous color harmony consists of three colors that are next to each other on the color wheel.



22.0320, 0.4158, 0.3378



22.0320, 0.4227, 0.3810



22.0320, 0.3978, 0.4164

Triad

The Triadic color harmony groups three colors that are evenly spaced from another and form a triangle on the color wheel.



22.0320, 0.4227, 0.3810



22.0320, 0.2485, 0.3621



22.0320, 0.2683, 0.2438

Complementary

The Complementary color scheme is a pair of colors which are on the opposite of each other on the color wheel.



22.0320, 0.4227, 0.3810



22.0829, 0.2366, 0.2682

Split Complementary

Split-complementary colors differ from the complementary color scheme. The scheme consists of three colors, the original color and two neighbors of the complement color.



22.0320, 0.2301, 0.2433



22.0320, 0.4227, 0.3810



22.0320, 0.2193, 0.3061

Square

The Square scheme is like the rectangle color scheme, but the four colors are evenly spaced on the color wheel.



22.0320, 0.4227, 0.3810



22.0320, 0.2962, 0.4112



22.0320, 0.2131, 0.2640



22.0320, 0.3219, 0.2628

Rectangle

The Rectangle color scheme consists of four colors that form a rectangle on the color wheel.



22.0320, 0.4227, 0.3810



22.0320, 0.3682, 0.4292



22.0320, 0.2131, 0.2640



22.0320, 0.2534, 0.2414

Sweetspot

The Sweet Spot groups the original color and five complimentary colors.



22.0331, 0.4227, 0.3810



59.7739, 0.3384, 0.3442



16.5670, 0.3640, 0.2512



12.7284, 0.3422, 0.3463



84.8088, 0.3127, 0.3290



15.4872, 0.3127, 0.3290

Same Dimension

The Same Dimension uses a secret algorithm to generate beautiful new colors.



22.0331, 0.4227, 0.3810



34.6619, 0.4555, 0.3900



33.9066, 0.3914, 0.4368



8.0163, 0.3276, 0.3381



9.4294, 0.5667, 0.3882



0.3300, 0.5078, 0.4350

Inverse Universe

The Inverse Universe completely reimagines the original color for something new.



22.0829, 0.2366, 0.2682



34.7122, 0.2223, 0.2523



12.7408, 0.2218, 0.1908



8.0210, 0.2987, 0.3198



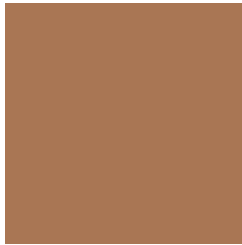
9.2390, 0.1875, 0.1948



0.3208, 0.2012, 0.2442

Previews

White Background



This preview shows how the Yxy color 22.0320, 0.4227, 0.3810 looks on a white background.

Color Contrast Check

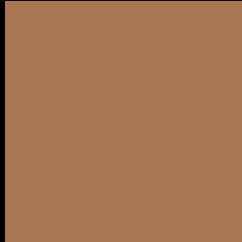
Large Text (above 18pt) WCAG AA ✓ Pass

Any Text WCAG AA × Fail

Large Text (above 18pt) WCAG AAA × Fail

Any Text WCAG AAA × Fail

Black Background



This preview shows how the Yxy color 22.0320, 0.4227, 0.3810 looks on a black background.

Color Contrast Check

Large Text (above 18pt) WCAG AA ✓ Pass

Any Text WCAG AA ✓ Pass

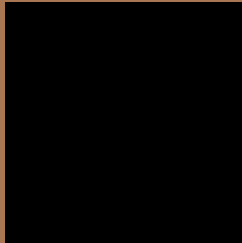
Large Text (above 18pt) WCAG AAA ✓ Pass

Any Text WCAG AAA × Fail

If you want to check with other color combinations, try the [Color Contrast Checker](#).

Yxy 22.0320, 0.4227, 0.3810

Background



This preview shows how black text looks on a background with the Yxy color 22.0320, 0.4227, 0.3810.



This preview shows how white text looks on a background with the Yxy color 22.0320, 0.4227, 0.3810.

Color Blindness Simulation

Color vision deficiency is a very complex topic, and I could not describe the different causes any better than Wikipedia does, so if you want to learn more, you should check out their [article about color blindness](#).

Dichromacy



Original Color

22.0320, 0.4227, 0.3810

Protanopia

22.2620, 0.3710, 0.4009

Deuteranopia

22.1078, 0.4025, 0.3958



Tritanopia

21.9861, 0.3793, 0.3155

Trichromacy



Original Color

22.0320, 0.4227, 0.3810

Protanomaly

22.1891, 0.3899, 0.3943

Deuteranomaly

22.1207, 0.4105, 0.3910

Tritanomaly

22.0021, 0.3961, 0.3400

Monochromacy



Original Color

22.0320, 0.4227, 0.3810

Achromatopsia

21.9526, 0.3127, 0.3290

Achromatomaly

21.7888, 0.3503, 0.3498

CSS Examples

Text

The CSS property to change the color of the text to Yxy 22.0320, 0.4227, 0.3810 is called "color". The color property can be set on classes, ids or directly on the HTML element.

This example shows how text in the color `rgb(169, 118, 84)` looks like.

```
.text, #text, p{  
    color:rgb(169, 118, 84)  
}
```

If you want to add a text shadow in that color use the text-shadow property, you can generate a text shadow directly with our [CSS Text Shadow Generator](#).

Here you see how black text with a 4 pixel rgb(169, 118, 84) colored shadow looks like.

```
.shadow{ text-shadow: 4px 4px 2px rgb(169, 118, 84) }
```

Border

The CSS property to change the border of an element to Yxy 22.0320, 0.4227, 0.3810 is called "border". The border property can be set on classes, ids or directly on the HTML element.

This example shows the color as border, it can be applied via the CSS property "border" or "border-color".

```
.border, #border, table{ border:4px solid rgb(169, 118, 84) }
```

If only the border color should be changed use the property `border-color`.

```
.border{ border-color:rgb(169, 118, 84) }
```

If you want to add a box shadow in that color use:

Here you see how a box with a 4 pixel `rgb(169, 118, 84)` colored shadow looks like.

```
.boxshadow{ -moz-box-shadow:4px 4px 4px  
4px rgb(169, 118, 84); -webkit-box-  
shadow:4px 4px 4px 4px rgb(169, 118, 84);  
box-shadow:4px 4px 4px 4px rgb(169, 118,  
84) }
```


Background

The CSS property to change the background color of an element to Yxy 22.0320, 0.4227, 0.3810 is called "background". The background property can be set on classes, ids or directly on the HTML element.

```
.background, #background, body{  
background: rgb(169, 118, 84) }
```

If only the background color should be changed can be used:

```
.background{ background-color: rgb(169,  
118, 84) }
```

This example shows the color as background, it is applied via the CSS property "background".

To optimize and compress your CSS code, you can use our [online CSS compressor and optimizer](#) based on csstidy. If you want to create a linear or radial gradient as background or border, check our [CSS Gradient Generator](#).

Hey! You found this booklet interesting? Support Converting Colors with the new Membership Option!

The pro membership hides all ads, plus gives you double the colors in the color bucket, and more awesome pro features!

[Learn more, Memberships starting at \\$2.50/m!](#)

**Follow me
on Twitter!**

@ConvertingColor