

Converting Colors

$Yxy(23.3339, 0.3972, 0.3699)$

Have a look what the booklet for
Yxy(23.3339, 0.3972, 0.3699)
contains.

Yxy(23.4041, 0.3972, 0.3698)	3
Conversions	4
Details	6
Harmonies	12
Previews	24
Color Blindness Simulation	27
CSS Examples	30

Color

Yxy(23.4041, 0.3972, 0.3698)

Conversions

Conversions Part 1

Format	Color
Hex	A67C62
RGB	166, 124, 98
RGB Percent	65%, 49%, 38%
CMY	0.3490, 0.5137, 0.6157
CMYK	0.00, 0.25, 0.41, 0.35
HSL	23°, 28%, 52%
HSV	23°, 41%, 65%
XYZ	25.1382, 23.4041, 14.7462
YIQ	133.5940, 33.3780, 0.8180

Conversions

Conversions Part 2

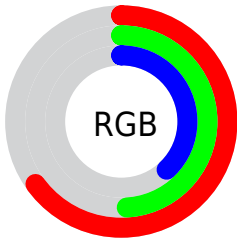
Format	Color
RYB	166, 140, 98
Decimal	10910818
CIELab	55.49, 12.82, 20.54
CIELCh	55, 24.215, 58.038
Yxy	23.4041, 0.3972, 0.3698
Android (android.graphics.Color)	4289100898 (0xFFA67C62)
YUV	133.5940, -17.5478, 28.4201
Hunter-Lab	48.3778, 8.0916, 15.7920

Details

The Yxy color **23.4041, 0.3972, 0.3698** is a dark color, and the websafe version is hex **996666**. A complement of this color would be **24.1037, 0.2505, 0.2835**, and the grayscale version is **23.7403, 0.3127, 0.3290**.

A 20% lighter version of the original color is **49.1438, 0.3780, 0.3623**, and **8.7159, 0.4295, 0.3821** is the 20% darker color. If you saturate the color by 10%, you get **20.6860, 0.4257, 0.3793**, and if you desaturate by 10%, it is **26.4566, 0.3718, 0.3596**.

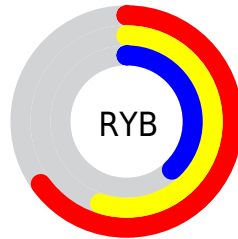
Distribution



Red (65%)

Green (49%)

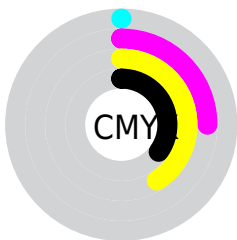
Blue (38%)



Red (65%)

Yellow (55%)

Blue (38%)

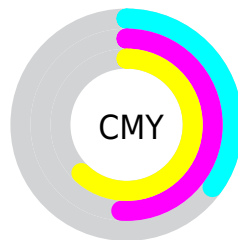


Cyan (0%)

Magenta (25%)

Yellow (41%)

Black (35%)



Cyan (35%)


Magenta (51%)


Yellow (62%)

Brightness & Saturation Gradients


These gradients show how the Yxy color 23.4041, 0.3972, 0.3698 changes by changing the brightness by 10 percent. The first figure shows a shift by +10% for each color and the second figure -10%.


Similar to the brightness gradients but the following saturation gradients show a change of the Yxy color 23.4041, 0.3972, 0.3698 by changing the saturation by 10% instead.


 23.4041, 0.3972,
0.3698


 23.4041, 0.3972,
0.3698


269.7938, 0.3499,
0.3485

 14.8922, 0.4108,
0.3751

 49.0560, 0.3787,
0.3620


 8.7437, 0.4295,
0.3818


 66.9648, 0.3722,
0.3591

 4.5744, 0.4562,
0.3900

 88.7746, 0.3668,
0.3566

 1.9998, 0.5063,
0.4063

 114.8700, 0.3623,
0.3545

 0.6074, 0.5947,
0.4053

145.6351, 0.3585,
0.3527

 0.0000, 0.0000,
0.0000

181.4546, 0.3552,

0.3511

222.7127, 0.3524,
0.3498

■ 23.4041, 0.3972,
0.3698

■ 23.4041, 0.3972,
0.3698

■ 20.6860, 0.4257,
0.3793

■ 26.4566, 0.3718,
0.3596

■ 18.2869, 0.4569,
0.3872

■ 29.8516, 0.3497,
0.3493

■ 16.1947, 0.4894,
0.3924

■ 33.6012, 0.3306,
0.3393

■ 14.3955, 0.5214,
0.3935

■ 37.7157, 0.3142,
0.3299

■ 12.8735, 0.5504,
0.3897

■ 42.2051, 0.3001,
0.3211

■ 11.7164, 0.5732,
0.3831

■ 47.0788, 0.2881,
0.3130

■ 52.3460, 0.2778,
0.3056

■ 58.0156, 0.2689,
0.2989

■ 64.0961, 0.2612,
0.2927

Harmonies

Analogous

The Analogous color harmony consists of three colors that are next to each other on the color wheel.



23.4041, 0.3905, 0.3360



23.4041, 0.3972, 0.3698



23.4041, 0.3797, 0.3963

Triad

The Triadic color harmony groups three colors that are evenly spaced from another and form a triangle on the color wheel.



23.4041, 0.3972, 0.3698



23.4041, 0.2646, 0.3558



23.4041, 0.2775, 0.2619

Complementary

The Complementary color scheme is a pair of colors which are on the opposite of each other on the color wheel.



23.4041, 0.3972, 0.3698



24.1037, 0.2505, 0.2835

Split Complementary

Split-complementary colors differ from the complementary color scheme. The scheme consists of three colors, the original color and two neighbors of the complement color.



23.4041, 0.2476, 0.2627



23.4041, 0.3972, 0.3698



23.4041, 0.2405, 0.3139

Square

The Square scheme is like the rectangle color scheme, but the four colors are evenly spaced on the color wheel.



23.4041, 0.3972, 0.3698



23.4041, 0.3023, 0.3912



23.4041, 0.2346, 0.2804



23.4041, 0.3188, 0.2763

Rectangle

The Rectangle color scheme consists of four colors that form a rectangle on the color wheel.



23.4041, 0.3972, 0.3698



23.4041, 0.3576, 0.4051



23.4041, 0.2346, 0.2804



23.4041, 0.2659, 0.2603

Sweetspot

The Sweet Spot groups the original color and five complimentary colors.



23.4052, 0.3972, 0.3698



60.0913, 0.3328, 0.3405



18.7667, 0.3498, 0.2635



13.2531, 0.3351, 0.3417



84.8088, 0.3127, 0.3290



15.4872, 0.3127, 0.3290

Same Dimension

The Same Dimension uses a secret algorithm to generate beautiful new colors.



23.4052, 0.3972, 0.3698



38.0362, 0.4226, 0.3784



33.0807, 0.3775, 0.4165



7.9951, 0.3277, 0.3377



9.1699, 0.5716, 0.3844



0.3223, 0.5114, 0.4322

Inverse Universe

The Inverse Universe completely reimagines the original color for something new.



24.1037, 0.2505, 0.2835



39.4489, 0.2378, 0.2716



15.8780, 0.2410, 0.2227



8.0428, 0.2987, 0.3202



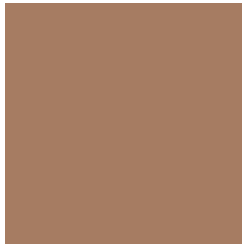
9.6748, 0.1892, 0.2010



0.3296, 0.2023, 0.2481

Previews

White Background



This preview shows how the Yxy color 23.4041, 0.3972, 0.3698 looks on a white background.

Color Contrast Check

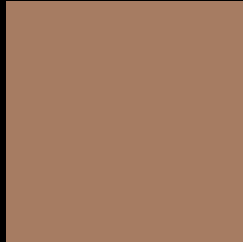
Large Text (above 18pt) WCAG AA ✓ Pass

Any Text WCAG AA × Fail

Large Text (above 18pt) WCAG AAA × Fail

Any Text WCAG AAA × Fail

Black Background



This preview shows how the Yxy color 23.4041, 0.3972, 0.3698 looks on a black background.

Color Contrast Check

Large Text (above 18pt) WCAG AA ✓ Pass

Any Text WCAG AA ✓ Pass

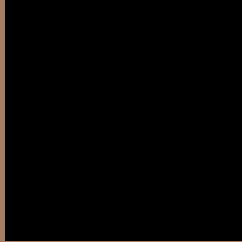
Large Text (above 18pt) WCAG AAA ✓ Pass

Any Text WCAG AAA × Fail

If you want to check with other color combinations, try the [Color Contrast Checker](#).

Yxy 23.4041, 0.3972, 0.3698

Background



This preview shows how black text looks on a background with the Yxy color 23.4041, 0.3972, 0.3698.



This preview shows how white text looks on a background with the Yxy color 23.4041, 0.3972, 0.3698.

Color Blindness Simulation

Color vision deficiency is a very complex topic, and I could not describe the different causes any better than Wikipedia does, so if you want to learn more, you should check out their [article about color blindness](#).

Dichromacy



Original Color

23.4041, 0.3972, 0.3698

Protanopia

23.4851, 0.3575, 0.3827

Deuteranopia

23.5705, 0.3858, 0.3793



Tritanopia

23.4529, 0.3636, 0.3154

Trichromacy



Original Color

23.4041, 0.3972, 0.3698

Protanomaly

23.4842, 0.3713, 0.3775

Deuteranomaly

23.6189, 0.3902, 0.3770

Tritanomaly

23.3076, 0.3761, 0.3338

Monochromacy



Original Color

23.4041, 0.3972, 0.3698

Achromatopsia

23.8398, 0.3127, 0.3290

Achromatomaly

23.4567, 0.3418, 0.3443

CSS Examples

Text

The CSS property to change the color of the text to Yxy 23.4041, 0.3972, 0.3698 is called "color". The color property can be set on classes, ids or directly on the HTML element.

This example shows how text in the color `rgb(166, 124, 98)` looks like.

```
.text, #text, p{  
    color:rgb(166, 124, 98)  
}
```

If you want to add a text shadow in that color use the text-shadow property, you can generate a text shadow directly with our [CSS Text Shadow Generator](#).

Here you see how black text with a 4 pixel rgb(166, 124, 98) colored shadow looks like.

```
.shadow{ text-shadow: 4px 4px 2px rgb(166, 124, 98) }
```

Border

The CSS property to change the border of an element to Yxy 23.4041, 0.3972, 0.3698 is called "border". The border property can be set on classes, ids or directly on the HTML element.

This example shows the color as border, it can be applied via the CSS property "border" or "border-color".

```
.border, #border, table{ border:4px solid rgb(166, 124, 98) }
```

If only the border color should be changed use the property `border-color`.

```
.border{ border-color:rgb(166, 124, 98) }
```

If you want to add a box shadow in that color use:

Here you see how a box with a 4 pixel `rgb(166, 124, 98)` colored shadow looks like.

```
.boxshadow{ -moz-box-shadow:4px 4px 4px  
4px rgb(166, 124, 98); -webkit-box-  
shadow:4px 4px 4px 4px rgb(166, 124, 98);  
box-shadow:4px 4px 4px 4px rgb(166, 124,  
98) }
```


Background

The CSS property to change the background color of an element to Yxy 23.4041, 0.3972, 0.3698 is called "background". The background property can be set on classes, ids or directly on the HTML element.

```
.background, #background, body{  
background: rgb(166, 124, 98) }
```

If only the background color should be changed can be used:

```
.background{ background-color: rgb(166,  
124, 98) }
```

This example shows the color as background, it is applied via the CSS property "background".

To optimize and compress your CSS code, you can use our [online CSS compressor and optimizer](#) based on csstidy. If you want to create a linear or radial gradient as background or border, check our [CSS Gradient Generator](#).

Hey! You found this booklet interesting? Support Converting Colors with the new Membership Option!

The pro membership hides all ads, plus gives you double the colors in the color bucket, and more awesome pro features!

[Learn more, Memberships starting at \\$2.50/m!](#)

**Follow me
on Twitter!**

@ConvertingColor