

# Converting Colors

$Y_{xy}(24.1059, 0.3977, 0.3687)$

Have a look what the booklet for  
Yxy(24.1059, 0.3977, 0.3687)  
contains.

<b>Yxy(24.0223, 0.3978, 0.3676)</b> .....	3
<b>Conversions</b> .....	4
<b>Details</b> .....	6
<b>Harmonies</b> .....	12
<b>Previews</b> .....	24
<b>Color Blindness Simulation</b> .....	27
<b>CSS Examples</b> .....	30

**Color**

**Yxy(24.0223, 0.3978, 0.3676)**

# Conversions

## Conversions Part 1

<b>Format</b>	<b>Color</b>
Hex	A97D64
RGB	169, 125, 100
RGB Percent	66%, 49%, 39%
CMY	0.3373, 0.5098, 0.6077
CMYK	0.00, 0.26, 0.41, 0.34
HSL	22°, 29%, 53%
HSV	22°, 41%, 66%
XYZ	25.9958, 24.0223, 15.3309
YIQ	135.3060, 34.2490, 1.5530

# Conversions

## Conversions Part 2

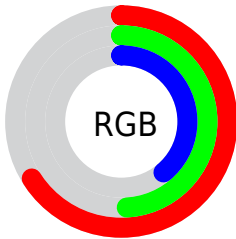
<b>Format</b>	<b>Color</b>
<b>RYB</b>	169, 139, 100
Decimal	11107684
CIELab	56.11, 13.74, 20.28
CIELCh	56, 24.495, 55.885
Yxy	24.0223, 0.3978, 0.3676
Android (android.graphics.Color)	4289297764 (0xFFA97D64)
YUV	135.3060, -17.4059, 29.5496
Hunter-Lab	49.0125, 8.9029, 15.7632

# Details

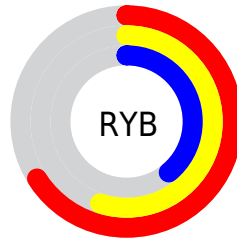
The Yxy color  $24.0223, 0.3978, 0.3676$  is a dark color, and the websafe version is hex  $996666$ . A complement of this color would be  $25.5270, 0.2511, 0.2862$ , and the grayscale version is  $24.4057, 0.3127, 0.3290$ .

A 20% lighter version of the original color is  $50.2439, 0.3795, 0.3607$ , and  $9.0708, 0.4301, 0.3788$  is the 20% darker color. If you saturate the color by 10%, you get  $21.1465, 0.4269, 0.3766$ , and if you desaturate by 10%, it is  $27.2645, 0.3720, 0.3579$ .

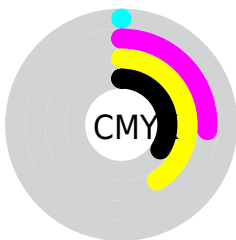
# Distribution



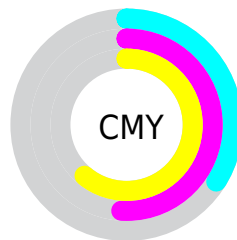
- Red (66%)
- Green (49%)
- Blue (39%)



- Red (66%)
- Yellow (55%)
- Blue (39%)



- Cyan (0%)
- Magenta (26%)
- Yellow (41%)
- Black (34%)




- Cyan (34%)
- Magenta (51%)
- Yellow (61%)


# Brightness & Saturation Gradients

These gradients show how the Yxy color 24.0223, 0.3978, 0.3676 changes by changing the brightness by 10 percent. The first figure shows a shift by +10% for each color and the second figure -10%.


Similar to the brightness gradients but the following saturation gradients show a change of the Yxy color 24.0223, 0.3978, 0.3676 by changing the saturation by 10% instead.




 24.0223, 0.3978,  
0.3676


 24.0223, 0.3978,  
0.3676


272.9332, 0.3503,  
0.3477


 15.3502, 0.4114,  
0.3725


 50.0666, 0.3793,  
0.3603

 9.0655, 0.4300,  
0.3786


 68.2075, 0.3727,  
0.3576

 4.7839, 0.4567,  
0.3860

 90.2735, 0.3673,  
0.3553

 2.1211, 0.5031,  
0.3985

 116.6490, 0.3628,  
0.3533

 0.6764, 0.5931,  
0.4069

147.7183, 0.3590,  
0.3516

 0.0000, 0.0000,  
0.0000

183.8658, 0.3557,

0.3501

225.4760, 0.3528,  
0.3488

■ 24.0223, 0.3978,  
0.3676

■ 24.0223, 0.3978,  
0.3676

■ 21.1465, 0.4269,  
0.3766

■ 27.2645, 0.3720,  
0.3579

■ 18.6200, 0.4589,  
0.3841

■ 30.8825, 0.3496,  
0.3481

■ 16.4293, 0.4924,  
0.3888

■ 34.8897, 0.3304,  
0.3386

■ 14.5587, 0.5255,  
0.3896

■ 39.2976, 0.3139,  
0.3297

■ 12.9907, 0.5553,  
0.3855

■ 44.1173, 0.2999,  
0.3214

■ 11.7931, 0.5790,  
0.3785

■ 49.3595, 0.2879,  
0.3138

■ 55.0344, 0.2777,  
0.3068

■ 61.1519, 0.2689,  
0.3004

■ 67.7216, 0.2613,  
0.2946

# Harmonies

## Analogous

The Analogous color harmony consists of three colors that are next to each other on the color wheel.



24.0223, 0.3893, 0.3335



24.0223, 0.3978, 0.3676



24.0223, 0.3819, 0.3950

# Triad

The Triadic color harmony groups three colors that are evenly spaced from another and form a triangle on the color wheel.



24.0223, 0.3978, 0.3676



24.0223, 0.2668, 0.3588



24.0223, 0.2748, 0.2612

# Complementary

The Complementary color scheme is a pair of colors which are on the opposite of each other on the color wheel.



24.0223, 0.3978, 0.3676



25.5270, 0.2511, 0.2862

# Split Complementary

Split-complementary colors differ from the complementary color scheme. The scheme consists of three colors, the original color and two neighbors of the complement color.



24.0223, 0.2459, 0.2632



24.0223, 0.3978, 0.3676



24.0223, 0.2415, 0.3168

# Square

The Square scheme is like the rectangle color scheme, but the four colors are evenly spaced on the color wheel.



24.0223, 0.3978, 0.3676



24.0223, 0.3053, 0.3933



24.0223, 0.2342, 0.2822



24.0223, 0.3156, 0.2747



# Rectangle

The Rectangle color scheme consists of four colors that form a rectangle on the color wheel.



24.0223, 0.3978, 0.3676



24.0223, 0.3604, 0.4049



24.0223, 0.2342, 0.2822



24.0223, 0.2635, 0.2600

# Sweetspot

The Sweet Spot groups the original color and five complimentary colors.



24.0234, 0.3978, 0.3676



61.4391, 0.3329, 0.3399



19.5943, 0.3481, 0.2621



13.1933, 0.3352, 0.3411



84.8088, 0.3127, 0.3290



15.4872, 0.3127, 0.3290



# Same Dimension

The Same Dimension uses a secret algorithm to generate beautiful new colors.



24.0234, 0.3978, 0.3676



38.3288, 0.4241, 0.3759



34.0299, 0.3779, 0.4149



7.9705, 0.3277, 0.3372



8.8844, 0.5771, 0.3800



0.3133, 0.5157, 0.4287



# Inverse Universe

The Inverse Universe completely reimagines the original color for something new.



25.5270, 0.2511, 0.2862



41.3624, 0.2383, 0.2747



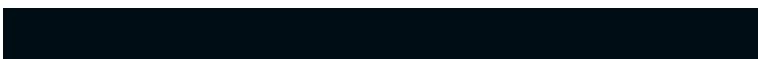
16.8084, 0.2415, 0.2251



8.0682, 0.2987, 0.3206



10.2004, 0.1911, 0.2081

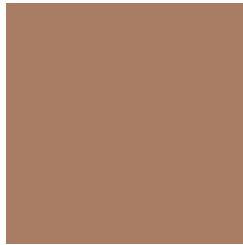


0.3401, 0.2035, 0.2527



# Previews

## White Background



This preview shows how the Yxy color 24.0223, 0.3978, 0.3676 looks on a white background.

## Color Contrast Check

Large Text (above 18pt) WCAG AA ✓ Pass

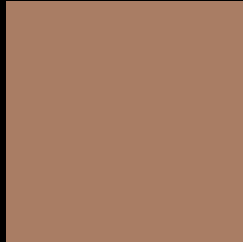
Any Text WCAG AA × Fail

Large Text (above 18pt) WCAG AAA × Fail

Any Text WCAG AAA × Fail



# Black Background



This preview shows how the Yxy color 24.0223, 0.3978, 0.3676 looks on a black background.

## Color Contrast Check

Large Text (above 18pt) WCAG AA ✓ Pass

Any Text WCAG AA ✓ Pass

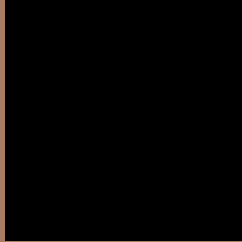
Large Text (above 18pt) WCAG AAA ✓ Pass

Any Text WCAG AAA × Fail

If you want to check with other color combinations, try the [Color Contrast Checker](#).

**Yxy 24.0223, 0.3978, 0.3676**

## Background



This preview shows how black text looks on a background with the Yxy color 24.0223, 0.3978, 0.3676.



This preview shows how white text looks on a background with the Yxy color 24.0223, 0.3978, 0.3676.

# Color Blindness Simulation

Color vision deficiency is a very complex topic, and I could not describe the different causes any better than Wikipedia does, so if you want to learn more, you should check out their [article about color blindness](#).

## Dichromacy



### Original Color

24.0223, 0.3978, 0.3676

### Protanopia

24.2567, 0.3569, 0.3820

### Deuteranopia

23.9723, 0.3841, 0.3774



## Tritanopia

24.0571, 0.3657, 0.3156

# Trichromacy



## Original Color

24.0223, 0.3978, 0.3676

## Protanomaly

23.9842, 0.3709, 0.3754

## Deuteranomaly

24.1257, 0.3897, 0.3750

## Tritanomaly

23.9089, 0.3781, 0.3338

# Monochromacy



## Original Color

24.0223, 0.3978, 0.3676

## Achromatopsia

24.2281, 0.3127, 0.3290

## Achromatomaly

23.8408, 0.3416, 0.3442

# CSS Examples

## Text

The CSS property to change the color of the text to Yxy 24.0223, 0.3978, 0.3676 is called "color". The color property can be set on classes, ids or directly on the HTML element.

This example shows how text in the color `rgb(169, 125, 100)` looks like.

```
.text, #text, p{  
    color:rgb(169, 125, 100)  
}
```

If you want to add a text shadow in that color use the text-shadow property, you can generate a text shadow directly with our [CSS Text Shadow Generator](#).

Here you see how black text with a 4 pixel rgb(169, 125, 100) colored shadow looks like.

```
.shadow{ text-shadow: 4px 4px 2px rgb(169, 125, 100) }
```

## Border

The CSS property to change the border of an element to Yxy 24.0223, 0.3978, 0.3676 is called "border". The border property can be set on classes, ids or directly on the HTML element.

This example shows the color as border, it can be applied via the CSS property "border" or "border-color".

```
.border, #border, table{ border:4px solid rgb(169, 125, 100) }
```

If only the border color should be changed use the property `border-color`.

```
.border{ border-color:rgb(169, 125, 100) }
```

If you want to add a box shadow in that color use:

Here you see how a box with a 4 pixel `rgb(169, 125, 100)` colored shadow looks like.

```
.boxshadow{ -moz-box-shadow:4px 4px 4px 4px rgb(169, 125, 100); -webkit-box-shadow:4px 4px 4px 4px rgb(169, 125, 100); box-shadow:4px 4px 4px 4px rgb(169, 125, 100) }
```



# Background

The CSS property to change the background color of an element to Yxy 24.0223, 0.3978, 0.3676 is called "background". The background property can be set on classes, ids or directly on the HTML element.

```
.background, #background, body{  
background: rgb(169, 125, 100) }
```

If only the background color should be changed can be used:

```
.background{ background-color: rgb(169,  
125, 100) }
```

This example shows the color as background, it is applied via the CSS property "background".

To optimize and compress your CSS code, you can use our [online CSS compressor and optimizer](#) based on csstidy. If you want to create a linear or radial gradient as background or border, check our [CSS Gradient Generator](#).

Hey! You found this booklet interesting? Support Converting Colors with the new Membership Option!

The pro membership hides all ads, plus gives you double the colors in the color bucket, and more awesome pro features!

**[Learn more, Memberships starting at \\$2.50/m!](#)**

**Follow me  
on Twitter!**

@ConvertingColor