

Converting Colors

$Y_{xy}(24.2861, 0.4019, 0.3758)$

Have a look what the booklet for
Yxy(24.2861, 0.4019, 0.3758)
contains.

Yxy(24.2013, 0.4020, 0.3752)	3
Conversions	4
Details	6
Harmonies	12
Previews	24
Color Blindness Simulation	27
CSS Examples	30

Color

Yxy(24.2013, 0.4020, 0.3752)

Conversions

Conversions Part 1

Format	Color
Hex	A97E60
RGB	169, 126, 96
RGB Percent	66%, 49%, 38%
CMY	0.3374, 0.5058, 0.6235
CMYK	0.00, 0.25, 0.43, 0.34
HSL	25°, 30%, 52%
HSV	25°, 43%, 66%
XYZ	25.9300, 24.2013, 14.3711
YIQ	135.4370, 35.2580, -0.2140

Conversions

Conversions Part 2

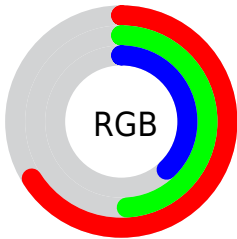
Format	Color
R_{YB}	169, 147, 96
Decimal	11107936
CIE _{Lab}	56.29, 12.69, 22.81
CIE _{LCh}	56, 26.101, 60.900
Yxy	24.2013, 0.4020, 0.3752
Android (android.graphics.Color)	4289298016 (0xFFA97E60)
YUV	135.4370, -19.4424, 29.4348
Hunter-Lab	49.1948, 7.9942, 17.1162

Details

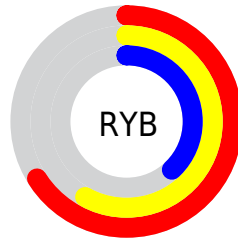
The Yxy color **24.2013, 0.4020, 0.3752** is a dark color, and the websafe version is hex **CC9966**. A complement of this color would be **23.8032, 0.2466, 0.2767**, and the grayscale version is **24.4635, 0.3127, 0.3290**.

A 20% lighter version of the original color is **50.5155, 0.3827, 0.3665**, and **9.1743, 0.4358, 0.3889** is the 20% darker color. If you saturate the color by 10%, you get **21.5048, 0.4303, 0.3852**, and if you desaturate by 10%, it is **27.2200, 0.3765, 0.3643**.

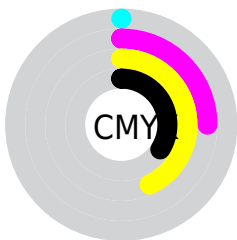
Distribution



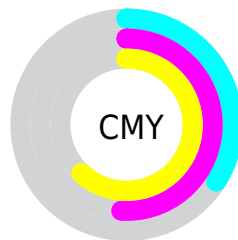
- Red (66%)
- Green (49%)
- Blue (38%)



- Red (66%)
- Yellow (58%)
- Blue (38%)



- Cyan (0%)
- Magenta (25%)
- Yellow (43%)
- Black (34%)





- Cyan (34%)
- Magenta (51%)
- Yellow (62%)

Brightness & Saturation Gradients


These gradients show how the Yxy color 24.2013, 0.4020, 0.3752 changes by changing the brightness by 10 percent. The first figure shows a shift by +10% for each color and the second figure -10%.


Similar to the brightness gradients but the following saturation gradients show a change of the Yxy color 24.2013, 0.4020, 0.3752 by changing the saturation by 10% instead.


 24.2013, 0.4020,
0.3752


 24.2013, 0.4020,
0.3752


273.8366, 0.3524,
0.3513

 15.4830, 0.4161,
0.3811


 50.3585, 0.3827,
0.3664


 9.1591, 0.4352,
0.3885


 68.5662, 0.3758,
0.3632

 4.8451, 0.4622,
0.3974

 90.7058, 0.3702,
0.3604

 2.1567, 0.5133,
0.4156

 117.1618, 0.3655,
0.3580

 0.6962, 0.5843,
0.4157

148.3184, 0.3615,
0.3560

 0.0000, 0.0000,
0.0000

184.5602, 0.3580,

0.3542

226.2714, 0.3550,
0.3526

■ 24.2013, 0.4020,
0.3752

■ 24.2013, 0.4020,
0.3752

■ 21.5048, 0.4303,
0.3852

■ 27.2200, 0.3765,
0.3643

■ 19.1154, 0.4608,
0.3932

■ 30.5683, 0.3540,
0.3532

■ 17.0217, 0.4921,
0.3982

■ 34.2579, 0.3345,
0.3424

■ 15.2100, 0.5222,
0.3988

■ 38.2988, 0.3176,
0.3321

■ 13.6652, 0.5489,
0.3943

■ 42.7002, 0.3031,
0.3225

■ 12.7504, 0.5653,
0.3893

■ 47.4714, 0.2906,
0.3137

■ 52.6211, 0.2798,
0.3055

■ 58.1578, 0.2705,
0.2981

■ 64.0895, 0.2625,
0.2913

Harmonies

Analogous

The Analogous color harmony consists of three colors that are next to each other on the color wheel.



24.2013, 0.3975, 0.3396



24.2013, 0.4020, 0.3752



24.2013, 0.3810, 0.4024

Triad

The Triadic color harmony groups three colors that are evenly spaced from another and form a triangle on the color wheel.



24.2013, 0.4020, 0.3752



24.2013, 0.2583, 0.3533



24.2013, 0.2790, 0.2587

Complementary

The Complementary color scheme is a pair of colors which are on the opposite of each other on the color wheel.



24.2013, 0.4020, 0.3752



23.8032, 0.2466, 0.2767

Split Complementary

Split-complementary colors differ from the complementary color scheme. The scheme consists of three colors, the original color and two neighbors of the complement color.



24.2013, 0.2459, 0.2577



24.2013, 0.4020, 0.3752



24.2013, 0.2346, 0.3087

Square

The Square scheme is like the rectangle color scheme, but the four colors are evenly spaced on the color wheel.



24.2013, 0.4020, 0.3752



24.2013, 0.2973, 0.3928



24.2013, 0.2304, 0.2746



24.2013, 0.3235, 0.2754

Rectangle

The Rectangle color scheme consists of four colors that form a rectangle on the color wheel.



24.2013, 0.4020, 0.3752



24.2013, 0.3565, 0.4108



24.2013, 0.2304, 0.2746



24.2013, 0.2663, 0.2565

Sweetspot

The Sweet Spot groups the original color and five complimentary colors.



24.2025, 0.4020, 0.3752



61.3434, 0.3346, 0.3425



18.6851, 0.3560, 0.2634



13.0520, 0.3385, 0.3447



84.8088, 0.3127, 0.3290



15.4872, 0.3127, 0.3290

Same Dimension

The Same Dimension uses a secret algorithm to generate beautiful new colors.



24.2025, 0.4020, 0.3752



38.6439, 0.4296, 0.3849



35.0028, 0.3797, 0.4242



8.0302, 0.3276, 0.3383



9.6066, 0.5635, 0.3907



0.3351, 0.5055, 0.4368

Inverse Universe

The Inverse Universe completely reimagines the original color for something new.



23.8032, 0.2466, 0.2767



37.8046, 0.2326, 0.2624



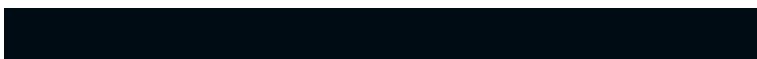
15.1105, 0.2358, 0.2113



8.0068, 0.2987, 0.3195



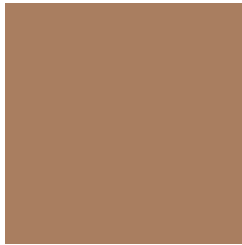
8.9617, 0.1864, 0.1909



0.3151, 0.2005, 0.2416

Previews

White Background



This preview shows how the Yxy color 24.2013, 0.4020, 0.3752 looks on a white background.

Color Contrast Check

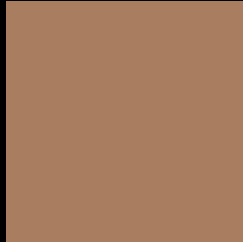
Large Text (above 18pt) WCAG AA ✓ Pass

Any Text WCAG AA × Fail

Large Text (above 18pt) WCAG AAA × Fail

Any Text WCAG AAA × Fail

Black Background



This preview shows how the Yxy color 24.2013, 0.4020, 0.3752 looks on a black background.

Color Contrast Check

Large Text (above 18pt) WCAG AA ✓ Pass

Any Text WCAG AA ✓ Pass

Large Text (above 18pt) WCAG AAA ✓ Pass

Any Text WCAG AAA × Fail

If you want to check with other color combinations, try the [Color Contrast Checker](#).

Yxy 24.2013, 0.4020, 0.3752

Background



This preview shows how black text looks on a background with the Yxy color 24.2013, 0.4020, 0.3752.



This preview shows how white text looks on a background with the Yxy color 24.2013, 0.4020, 0.3752.

Color Blindness Simulation

Color vision deficiency is a very complex topic, and I could not describe the different causes any better than Wikipedia does, so if you want to learn more, you should check out their [article about color blindness](#).

Dichromacy



Original Color

24.2013, 0.4020, 0.3752

Protanopia

24.2678, 0.3625, 0.3886

Deuteranopia

24.1038, 0.3913, 0.3832



Tritanopia

24.0841, 0.3645, 0.3141

Trichromacy



Original Color

24.2013, 0.4020, 0.3752

Protanomaly

24.2734, 0.3762, 0.3832

Deuteranomaly

24.1571, 0.3957, 0.3809

Tritanomaly

24.1319, 0.3789, 0.3368

Monochromacy



Original Color

24.2013, 0.4020, 0.3752

Achromatopsia

24.2281, 0.3127, 0.3290

Achromatomaly

24.0860, 0.3425, 0.3475

CSS Examples

Text

The CSS property to change the color of the text to Yxy 24.2013, 0.4020, 0.3752 is called "color". The color property can be set on classes, ids or directly on the HTML element.

This example shows how text in the color `rgb(169, 126, 96)` looks like.

```
.text, #text, p{  
    color:rgb(169, 126, 96)  
}
```

If you want to add a text shadow in that color use the text-shadow property, you can generate a text shadow directly with our [CSS Text Shadow Generator](#).

Here you see how black text with a 4 pixel rgb(169, 126, 96) colored shadow looks like.

```
.shadow{ text-shadow: 4px 4px 2px rgb(169, 126, 96) }
```

Border

The CSS property to change the border of an element to Yxy 24.2013, 0.4020, 0.3752 is called "border". The border property can be set on classes, ids or directly on the HTML element.

This example shows the color as border, it can be applied via the CSS property "border" or "border-color".

```
.border, #border, table{ border:4px solid rgb(169, 126, 96) }
```

If only the border color should be changed use the property border-color.

```
.border{ border-color:rgb(169, 126, 96) }
```

If you want to add a box shadow in that color use:

Here you see how a box with a 4 pixel rgb(169, 126, 96) colored shadow looks like.

```
.boxshadow{ -moz-box-shadow:4px 4px 4px  
4px rgb(169, 126, 96); -webkit-box-  
shadow:4px 4px 4px 4px rgb(169, 126, 96);  
box-shadow:4px 4px 4px 4px rgb(169, 126,  
96) }
```


Background

The CSS property to change the background color of an element to Yxy 24.2013, 0.4020, 0.3752 is called "background". The background property can be set on classes, ids or directly on the HTML element.

```
.background, #background, body{  
background: rgb(169, 126, 96) }
```

If only the background color should be changed can be used:

```
.background{ background-color: rgb(169,  
126, 96) }
```

This example shows the color as background, it is applied via the CSS property "background".

To optimize and compress your CSS code, you can use our [online CSS compressor and optimizer](#) based on csstidy. If you want to create a linear or radial gradient as background or border, check our [CSS Gradient Generator](#).

Hey! You found this booklet interesting? Support Converting Colors with the new Membership Option!

The pro membership hides all ads, plus gives you double the colors in the color bucket, and more awesome pro features!

[Learn more, Memberships starting at \\$2.50/m!](#)

**Follow me
on Twitter!**

@ConvertingColor