

# Converting Colors

$Y_{xy}(25.2147, 0.3810, 0.3597)$

Have a look what the booklet for  
Yxy(25.2147, 0.3810, 0.3597)  
contains.

<b>Yxy(25.3065, 0.3805, 0.3601)</b> .....	3
<b>Conversions</b> .....	4
<b>Details</b> .....	6
<b>Harmonies</b> .....	12
<b>Previews</b> .....	24
<b>Color Blindness Simulation</b> .....	27
<b>CSS Examples</b> .....	30

**Color**

**Yxy(25.3065, 0.3805, 0.3601)**

# Conversions

## Conversions Part 1

<b>Format</b>	<b>Color</b>
Hex	A7826E
RGB	167, 130, 110
RGB Percent	65%, 51%, 43%
CMY	0.3449, 0.4902, 0.5686
CMYK	0.00, 0.22, 0.34, 0.34
HSL	21°, 24%, 54%
HSV	21°, 34%, 66%
XYZ	26.7401, 25.3065, 18.2297
YIQ	138.7830, 28.4720, 1.6240

# Conversions

## Conversions Part 2

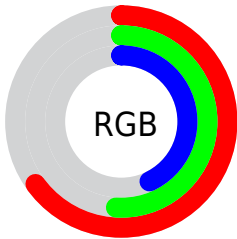
Format	Color
R <sub>Y</sub> B	167, 141, 110
Decimal	10977902
CIE Lab	57.37, 11.36, 16.27
CIE LCh	57, 19.849, 55.074
Yxy	25.3065, 0.3805, 0.3601
Android (android.graphics.Color)	4289167982 (0xFFA7826E)
YUV	138.7830, -14.1900, 24.7463
Hunter-Lab	50.3056, 6.8477, 13.7285

# Details

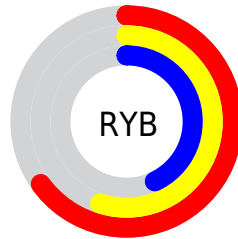
The Yxy color **25.3065, 0.3805, 0.3601** is a dark color, and the websafe version is hex **996666**. A complement of this color would be **26.9943, 0.2610, 0.2954**, and the grayscale version is **25.7800, 0.3127, 0.3290**.

A 20% lighter version of the original color is **52.1636, 0.3654, 0.3537**, and **9.8101, 0.4065, 0.3710** is the 20% darker color. If you saturate the color by 10%, you get **22.2412, 0.4077, 0.3694**, and if you desaturate by 10%, it is **28.7473, 0.3568, 0.3506**.

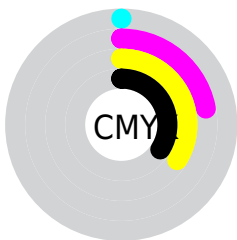
# Distribution



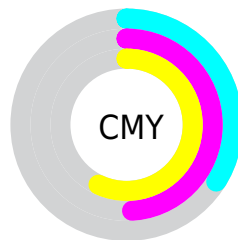
- Red (65%)
- Green (51%)
- Blue (43%)



- Red (65%)
- Yellow (55%)
- Blue (43%)



- Cyan (0%)
- Magenta (22%)
- Yellow (34%)
- Black (34%)




- Cyan (34%)
- Magenta (49%)
- Yellow (57%)


# Brightness & Saturation Gradients

These gradients show how the Yxy color 25.3065, 0.3805, 0.3601 changes by changing the brightness by 10 percent. The first figure shows a shift by +10% for each color and the second figure -10%.


Similar to the brightness gradients but the following saturation gradients show a change of the Yxy color 25.3065, 0.3805, 0.3601 by changing the saturation by 10% instead.





 25.3065, 0.3805,  
0.3601

 25.3065, 0.3805,  
0.3601

279.3609, 0.3429,  
0.3439


 16.3056, 0.3913,  
0.3643

 52.1540, 0.3659,  
0.3541

 9.7406, 0.4060,  
0.3696


 70.7694, 0.3607,  
0.3519

 5.2273, 0.4272,  
0.3765


 93.3583, 0.3564,  
0.3500

 2.3813, 0.4600,  
0.3853

 120.3053, 0.3528,  
0.3484

 0.8162, 0.5676,  
0.4324

151.9946, 0.3498,  
0.3470

 0.0000, 1.0000,  
0.0000

188.8108, 0.3472,

 0.0000, 0.0000,

0.3458

0.0000

231.1380, 0.3449,  
0.3448

■ 25.3065, 0.3805,  
0.3601

■ 25.3065, 0.3805,  
0.3601

■ 22.2412, 0.4077,  
0.3694

■ 28.7473, 0.3568,  
0.3506

■ 19.5347, 0.4382,  
0.3777

■ 32.5726, 0.3365,  
0.3413

■ 17.1738, 0.4713,  
0.3841


■ 36.7955, 0.3191,  
0.3325


■ 15.1436, 0.5055,  
0.3874

■ 41.4274, 0.3043,  
0.3243

■ 13.4274, 0.5383,  
0.3865


■ 46.4793, 0.2917,  
0.3167

 12.0070, 0.5669,  
0.3806

 51.9615, 0.2810,  
0.3097

 11.2979, 0.5820,  
0.3761

 57.8844, 0.2718,  
0.3034

 64.2575, 0.2639,  
0.2976

 70.7412, 0.2597,  
0.2980

# Harmonies

## Analogous

The Analogous color harmony consists of three colors that are next to each other on the color wheel.



25.3065, 0.3730, 0.3325



25.3065, 0.3805, 0.3601



25.3065, 0.3687, 0.3817

# Triad

The Triadic color harmony groups three colors that are evenly spaced from another and form a triangle on the color wheel.



25.3065, 0.3805, 0.3601



25.3065, 0.2769, 0.3535



25.3065, 0.2817, 0.2739

# Complementary

The Complementary color scheme is a pair of colors which are on the opposite of each other on the color wheel.



25.3065, 0.3805, 0.3601



26.9943, 0.2610, 0.2954

# Split Complementary

Split-complementary colors differ from the complementary color scheme. The scheme consists of three colors, the original color and two neighbors of the complement color.



25.3065, 0.2584, 0.2763



25.3065, 0.3805, 0.3601



25.3065, 0.2557, 0.3207

# Square

The Square scheme is like the rectangle color scheme, but the four colors are evenly spaced on the color wheel.



25.3065, 0.3805, 0.3601



25.3065, 0.3082, 0.3799



25.3065, 0.2492, 0.2926



25.3065, 0.3144, 0.2846



# Rectangle

The Rectangle color scheme consists of four colors that form a rectangle on the color wheel.



25.3065, 0.3805, 0.3601



25.3065, 0.3520, 0.3891



25.3065, 0.2492, 0.2926



25.3065, 0.2726, 0.2732

# Sweetspot

The Sweet Spot groups the original color and five complimentary colors.



25.3077, 0.3805, 0.3601



61.2119, 0.3293, 0.3378



21.4830, 0.3407, 0.2732



13.4732, 0.3317, 0.3390



84.8088, 0.3127, 0.3290



15.4872, 0.3127, 0.3290



# Same Dimension

The Same Dimension uses a secret algorithm to generate beautiful new colors.



25.3077, 0.3805, 0.3601



41.0691, 0.4008, 0.3672



33.9657, 0.3668, 0.4010



7.9562, 0.3277, 0.3370



8.7254, 0.5803, 0.3775



0.3081, 0.5183, 0.4267



# Inverse Universe

The Inverse Universe completely reimagines the original color for something new.



26.9943, 0.2610, 0.2954



44.5351, 0.2500, 0.2866



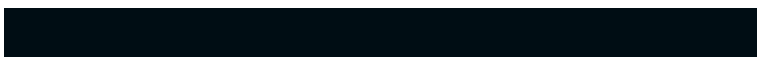
19.1974, 0.2546, 0.2449



8.0831, 0.2987, 0.3209



10.5176, 0.1923, 0.2123

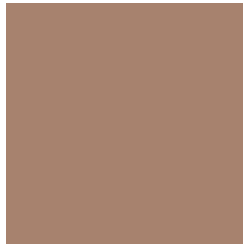


0.3463, 0.2043, 0.2554



# Previews

## White Background



This preview shows how the Yxy color 25.3065, 0.3805, 0.3601 looks on a white background.

## Color Contrast Check

Large Text (above 18pt) WCAG AA ✓ Pass

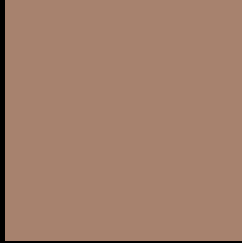
Any Text WCAG AA × Fail

Large Text (above 18pt) WCAG AAA × Fail

Any Text WCAG AAA × Fail



# Black Background



This preview shows how the Yxy color 25.3065, 0.3805, 0.3601 looks on a black background.

## Color Contrast Check

Large Text (above 18pt) WCAG AA ✓ Pass

Any Text WCAG AA ✓ Pass

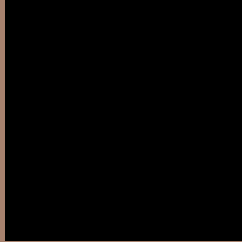
Large Text (above 18pt) WCAG AAA ✓ Pass

Any Text WCAG AAA × Fail

If you want to check with other color combinations, try the [Color Contrast Checker](#).

**Yxy 25.3065, 0.3805, 0.3601**

## **Background**



This preview shows how black text looks on a background with the Yxy color 25.3065, 0.3805, 0.3601.



This preview shows how white text looks on a background with the Yxy color 25.3065, 0.3805, 0.3601.

# Color Blindness Simulation

Color vision deficiency is a very complex topic, and I could not describe the different causes any better than Wikipedia does, so if you want to learn more, you should check out their [article about color blindness](#).

## Dichromacy



### Original Color

25.3065, 0.3805, 0.3601

### Protanopia

25.5029, 0.3472, 0.3693

### Deuteranopia

25.4779, 0.3717, 0.3656



## Tritanopia

25.2453, 0.3543, 0.3140

# Trichromacy



## Original Color

25.3065, 0.3805, 0.3601

## Protanomaly

25.3902, 0.3589, 0.3650

## Deuteranomaly

25.4148, 0.3746, 0.3638

## Tritanomaly

25.1461, 0.3637, 0.3292

# Monochromacy



## Original Color

25.3065, 0.3805, 0.3601

## Achromatopsia

25.8183, 0.3127, 0.3290

## Achromatomaly

25.5564, 0.3360, 0.3422

# CSS Examples

## Text

The CSS property to change the color of the text to Yxy 25.3065, 0.3805, 0.3601 is called "color". The color property can be set on classes, ids or directly on the HTML element.

This example shows how text in the color `rgb(167, 130, 110)` looks like.

```
.text, #text, p{  
    color:rgb(167, 130, 110)  
}
```

If you want to add a text shadow in that color use the text-shadow property, you can generate a text shadow directly with our [CSS Text Shadow Generator](#).

Here you see how black text with a 4 pixel rgb(167, 130, 110) colored shadow looks like.

```
.shadow{ text-shadow: 4px 4px 2px rgb(167, 130, 110) }
```

## Border

The CSS property to change the border of an element to Yxy 25.3065, 0.3805, 0.3601 is called "border". The border property can be set on classes, ids or directly on the HTML element.

This example shows the color as border, it can be applied via the CSS property "border" or "border-color".

```
.border, #border, table{ border:4px solid rgb(167, 130, 110) }
```

If only the border color should be changed use the property `border-color`.

```
.border{ border-color:rgb(167, 130, 110) }
```

If you want to add a box shadow in that color use:

Here you see how a box with a 4 pixel `rgb(167, 130, 110)` colored shadow looks like.

```
.boxshadow{ -moz-box-shadow:4px 4px 4px  
4px rgb(167, 130, 110); -webkit-box-  
shadow:4px 4px 4px 4px rgb(167, 130, 110);  
box-shadow:4px 4px 4px 4px rgb(167, 130,  
110) }
```



# Background

The CSS property to change the background color of an element to Yxy 25.3065, 0.3805, 0.3601 is called "background". The background property can be set on classes, ids or directly on the HTML element.

```
.background, #background, body{  
background: rgb(167, 130, 110) }
```

If only the background color should be changed can be used:

```
.background{ background-color: rgb(167,  
130, 110) }
```

This example shows the color as background, it is applied via the CSS property "background".

To optimize and compress your CSS code, you can use our [online CSS compressor and optimizer](#) based on csstidy. If you want to create a linear or radial gradient as background or border, check our [CSS Gradient Generator](#).

Hey! You found this booklet interesting? Support Converting Colors with the new Membership Option!

The pro membership hides all ads, plus gives you double the colors in the color bucket, and more awesome pro features!

**[Learn more, Memberships starting at \\$2.50/m!](#)**

**Follow me  
on Twitter!**

@ConvertingColor