

Converting Colors

$Y_{xy}(25.5622, 0.4303, 0.3811)$

Have a look what the booklet for
Yxy(25.5622, 0.4303, 0.3811)
contains.

Yxy(25.5622, 0.4303, 0.3811)	3
Conversions	4
Details	6
Harmonies	12
Previews	24
Color Blindness Simulation	27
CSS Examples	30

Color

Yxy(25.5622, 0.4303, 0.3811)

Conversions

Conversions Part 1

Format	Color
Hex	B87D58
RGB	184, 125, 88
RGB Percent	72%, 49%, 35%
CMY	0.2784, 0.5098, 0.6548
CMYK	0.00, 0.32, 0.52, 0.28
HSL	23°, 40%, 53%
HSV	23°, 52%, 72%
XYZ	28.8623, 25.5622, 12.6503
YIQ	138.4230, 47.0410, 1.0010

Conversions

Conversions Part 2

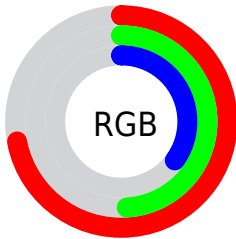
Format	Color
RYB	184, 148, 88
Decimal	12090712
CIELab	57.62, 18.75, 29.34
CIELCh	58, 34.818, 57.418
Yxy	25.5622, 0.4303, 0.3811
Android (android.graphics.Color)	4290280792 (0xFFB87D58)
YUV	138.4230, -24.8585, 39.9710
Hunter-Lab	50.5591, 13.4206, 20.5565

Details

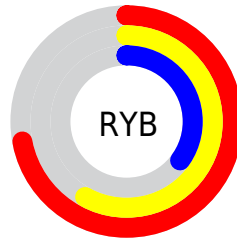
The Yxy color **25.5622, 0.4303, 0.3811** is a dark color, and the websafe version is hex **CC9966**. A complement of this color would be **26.4082, 0.2341, 0.2674**, and the grayscale version is **25.6706, 0.3127, 0.3290**.

A 20% lighter version of the original color is **52.5530, 0.4056, 0.3731**, and **9.9182, 0.4719, 0.3937** is the 20% darker color. If you saturate the color by 10%, you get **22.5935, 0.4619, 0.3888**, and if you desaturate by 10%, it is **28.9365, 0.4012, 0.3716**.

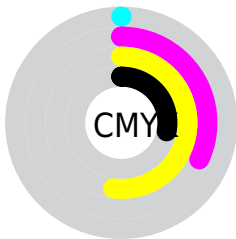
Distribution



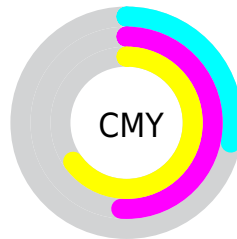
- Red (72%)
- Green (49%)
- Blue (35%)



- Red (72%)
- Yellow (58%)
- Blue (35%)



- Cyan (0%)
- Magenta (32%)
- Yellow (52%)
- Black (28%)





- Cyan (28%)
- Magenta (51%)
- Yellow (65%)

Brightness & Saturation Gradients

These gradients show how the Yxy color 25.5622, 0.4303, 0.3811 changes by changing the brightness by 10 percent. The first figure shows a shift by +10% for each color and the second figure -10%.


Similar to the brightness gradients but the following saturation gradients show a change of the Yxy color 25.5622, 0.4303, 0.3811 by changing the saturation by 10% instead.


 25.5622, 0.4303,
0.3811


 25.5622, 0.4303,
0.3811


280.6263, 0.3657,
0.3557


 16.4964, 0.4480,
0.3865


 52.5678, 0.4056,
0.3723


 9.8761, 0.4715,
0.3926


 71.2764, 0.3966,
0.3689

 5.3169, 0.5034,
0.3982

 93.9681, 0.3893,
0.3659

 2.4344, 0.5707,
0.4168

 121.0273, 0.3830,
0.3633

 0.8435, 0.6123,
0.3877

 152.8382, 0.3778,
0.3610

 0.0000, 1.0000,
0.0000

189.7855, 0.3732,

 0.0000, 0.0000,

0.3590

0.0000

232.2534, 0.3692,
0.3573

■ 25.5622, 0.4303,
0.3811

■ 25.5622, 0.4303,
0.3811

■ 22.5935, 0.4619,
0.3888

■ 28.9365, 0.4012,
0.3716

■ 20.0097, 0.4946,
0.3934

■ 32.7282, 0.3752,
0.3613

■ 17.7940, 0.5264,
0.3938

■ 36.9534, 0.3525,
0.3508

■ 15.9260, 0.5545,
0.3891

■ 41.6259, 0.3329,
0.3406

■ 14.6836, 0.5737,
0.3827

■ 46.7592, 0.3160,
0.3310

■ 52.3658, 0.3016,
0.3220

■ 58.4579, 0.2893,
0.3137

■ 65.0473, 0.2787,
0.3062

■ 72.1453, 0.2696,
0.2992

Harmonies

Analogous

The Analogous color harmony consists of three colors that are next to each other on the color wheel.



25.5622, 0.4212, 0.3353



25.5622, 0.4303, 0.3811



25.5622, 0.4051, 0.4200

Triad

The Triadic color harmony groups three colors that are evenly spaced from another and form a triangle on the color wheel.



25.5622, 0.4303, 0.3811



25.5622, 0.2467, 0.3677



25.5622, 0.2626, 0.2383

Complementary

The Complementary color scheme is a pair of colors which are on the opposite of each other on the color wheel.



25.5622, 0.4303, 0.3811



26.4082, 0.2341, 0.2674

Split Complementary

Split-complementary colors differ from the complementary color scheme. The scheme consists of three colors, the original color and two neighbors of the complement color.



25.5622, 0.2236, 0.2388



25.5622, 0.4303, 0.3811



25.5622, 0.2147, 0.3073

Square

The Square scheme is like the rectangle color scheme, but the four colors are evenly spaced on the color wheel.



25.5622, 0.4303, 0.3811



25.5622, 0.2979, 0.4194



25.5622, 0.2071, 0.2615



25.5622, 0.3189, 0.2574

Rectangle

The Rectangle color scheme consists of four colors that form a rectangle on the color wheel.



25.5622, 0.4303, 0.3811



25.5622, 0.3742, 0.4352



25.5622, 0.2071, 0.2615



25.5622, 0.2473, 0.2362

Sweetspot

The Sweet Spot groups the original color and five complimentary colors.



25.5635, 0.4303, 0.3811



71.8828, 0.3406, 0.3448



19.2863, 0.3672, 0.2481



15.1247, 0.3446, 0.3469



93.3107, 0.3127, 0.3290



18.7317, 0.3127, 0.3290

Same Dimension

The Same Dimension uses a secret algorithm to generate beautiful new colors.



25.5635, 0.4303, 0.3811



40.0188, 0.4681, 0.3899



40.7049, 0.3947, 0.4409



9.5644, 0.3278, 0.3379



10.2485, 0.5715, 0.3844



0.4826, 0.5234, 0.4226

Inverse Universe

The Inverse Universe completely reimagines the original color for something new.



26.4082, 0.2341, 0.2674



41.6373, 0.2188, 0.2503



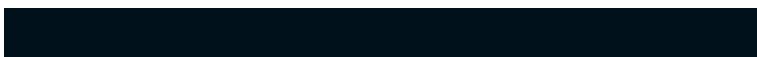
14.5020, 0.2175, 0.1838



9.6136, 0.2985, 0.3200



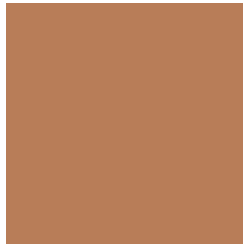
10.6799, 0.1887, 0.1994



0.4925, 0.1991, 0.2366

Previews

White Background



This preview shows how the Yxy color 25.5622, 0.4303, 0.3811 looks on a white background.

Color Contrast Check

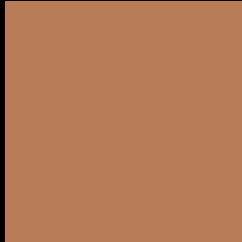
Large Text (above 18pt) WCAG AA ✓ Pass

Any Text WCAG AA × Fail

Large Text (above 18pt) WCAG AAA × Fail

Any Text WCAG AAA × Fail

Black Background



This preview shows how the Yxy color 25.5622, 0.4303, 0.3811 looks on a black background.

Color Contrast Check

Large Text (above 18pt) WCAG AA ✓ Pass

Any Text WCAG AA ✓ Pass

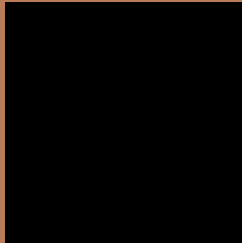
Large Text (above 18pt) WCAG AAA ✓ Pass

Any Text WCAG AAA × Fail

If you want to check with other color combinations, try the [Color Contrast Checker](#).

Yxy 25.5622, 0.4303, 0.3811

Background



This preview shows how black text looks on a background with the Yxy color 25.5622, 0.4303, 0.3811.



This preview shows how white text looks on a background with the Yxy color 25.5622, 0.4303, 0.3811.

Color Blindness Simulation

Color vision deficiency is a very complex topic, and I could not describe the different causes any better than Wikipedia does, so if you want to learn more, you should check out their [article about color blindness](#).

Dichromacy



Original Color

25.5622, 0.4303, 0.3811

Protanopia

25.7396, 0.3740, 0.4047

Deuteranopia

25.7718, 0.4072, 0.4003



Tritanopia

25.5827, 0.3857, 0.3165

Trichromacy



Original Color

25.5622, 0.4303, 0.3811

Protanomaly

25.4869, 0.3938, 0.3965

Deuteranomaly

25.6521, 0.4156, 0.3925

Tritanomaly

25.5731, 0.4029, 0.3406

Monochromacy



Original Color

25.5622, 0.4303, 0.3811

Achromatopsia

25.4152, 0.3127, 0.3290

Achromatomaly

25.0997, 0.3529, 0.3502

CSS Examples

Text

The CSS property to change the color of the text to Yxy 25.5622, 0.4303, 0.3811 is called "color". The color property can be set on classes, ids or directly on the HTML element.

This example shows how text in the color `rgb(184, 125, 88)` looks like.

```
.text, #text, p{  
    color:rgb(184, 125, 88)  
}
```

If you want to add a text shadow in that color use the text-shadow property, you can generate a text shadow directly with our [CSS Text Shadow Generator](#).

Here you see how black text with a 4 pixel rgb(184, 125, 88) colored shadow looks like.

```
.shadow{ text-shadow: 4px 4px 2px rgb(184, 125, 88) }
```

Border

The CSS property to change the border of an element to Yxy 25.5622, 0.4303, 0.3811 is called "border". The border property can be set on classes, ids or directly on the HTML element.

This example shows the color as border, it can be applied via the CSS property "border" or "border-color".

```
.border, #border, table{ border:4px solid rgb(184, 125, 88) }
```

If only the border color should be changed use the property `border-color`.

```
.border{ border-color:rgb(184, 125, 88) }
```

If you want to add a box shadow in that color use:

Here you see how a box with a 4 pixel `rgb(184, 125, 88)` colored shadow looks like.

```
.boxshadow{ -moz-box-shadow:4px 4px 4px  
4px rgb(184, 125, 88); -webkit-box-  
shadow:4px 4px 4px 4px rgb(184, 125, 88);  
box-shadow:4px 4px 4px 4px rgb(184, 125,  
88) }
```


Background

The CSS property to change the background color of an element to Yxy 25.5622, 0.4303, 0.3811 is called "background". The background property can be set on classes, ids or directly on the HTML element.

```
.background, #background, body{  
background: rgb(184, 125, 88) }
```

If only the background color should be changed can be used:

```
.background{ background-color: rgb(184,  
125, 88) }
```

This example shows the color as background, it is applied via the CSS property "background".

To optimize and compress your CSS code, you can use our [online CSS compressor and optimizer](#) based on csstidy. If you want to create a linear or radial gradient as background or border, check our [CSS Gradient Generator](#).

Hey! You found this booklet interesting? Support Converting Colors with the new Membership Option!

The pro membership hides all ads, plus gives you double the colors in the color bucket, and more awesome pro features!

[Learn more, Memberships starting at \\$2.50/m!](#)

**Follow me
on Twitter!**

@ConvertingColor