

Converting Colors

$Y_{xy}(26.3614, 0.3790, 0.3279)$

Have a look what the booklet for
Yxy(26.3614, 0.3790, 0.3279)
contains.

Yxy(26.2778, 0.3785, 0.3277)	3
Conversions	4
Details	6
Harmonies	12
Previews	24
Color Blindness Simulation	27
CSS Examples	30

Color

Yxy(26.2778, 0.3785, 0.3277)

Conversions

Conversions Part 1

Format	Color
Hex	B57E7F
RGB	181, 126, 127
RGB Percent	71%, 49%, 50%
CMY	0.2901, 0.5059, 0.5019
CMYK	0.00, 0.30, 0.30, 0.29
HSL	359°, 27%, 60%
HSV	359°, 30%, 71%
XYZ	30.3514, 26.2778, 23.5594
YIQ	142.5590, 32.4590, 11.9710

Conversions

Conversions Part 2

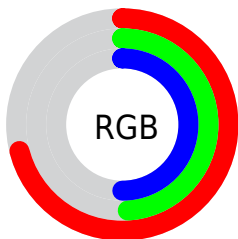
Format	Color
R_{YB}	181, 126, 127
Decimal	11894399
CIE _{Lab}	58.30, 21.50, 8.03
CIE _{LCh}	58, 22.951, 20.491
Yxy	26.2778, 0.3785, 0.3277
Android (android.graphics.Color)	4290084479 (0xFFB57E7F)
YUV	142.5590, -7.6706, 33.7128
Hunter-Lab	51.2619, 15.9789, 8.6343

Details

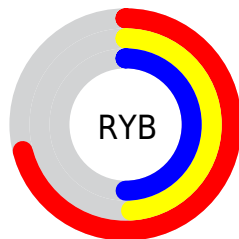
The Yxy color $26.2778, 0.3785, 0.3277$ is a dark color, and the websafe version is hex 996666 . A complement of this color would be $40.7834, 0.2703, 0.3304$, and the grayscale version is $27.3062, 0.3127, 0.3290$.

A 20% lighter version of the original color is $53.7126, 0.3641, 0.3280$, and $10.2310, 0.4041, 0.3253$ is the 20% darker color. If you saturate the color by 10%, you get $21.6381, 0.4112, 0.3273$, and if you desaturate by 10%, it is $31.8392, 0.3519, 0.3281$.

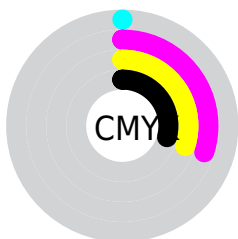
Distribution



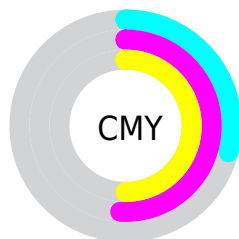
- Red (71%)
- Green (49%)
- Blue (50%)



- Red (71%)
- Yellow (49%)
- Blue (50%)



- Cyan (0%)
- Magenta (30%)
- Yellow (30%)
- Black (29%)




- Cyan (29%)
- Magenta (51%)
- Yellow (50%)

Brightness & Saturation Gradients


These gradients show how the Yxy color 26.2778, 0.3785, 0.3277 changes by changing the brightness by 10 percent. The first figure shows a shift by +10% for each color and the second figure -10%.


Similar to the brightness gradients but the following saturation gradients show a change of the Yxy color 26.2778, 0.3785, 0.3277 by changing the saturation by 10% instead.

 26.2778, 0.3785,
0.3277


 26.2778, 0.3785,
0.3277


284.1431, 0.3422,
0.3291


 17.0316, 0.3889,
0.3270


 53.7228, 0.3644,
0.3284

 10.2570, 0.4031,
0.3258


 72.6903, 0.3594,
0.3286

 5.5697, 0.4237,
0.3237

 95.6671, 0.3552,
0.3288

 2.5852, 0.4562,
0.3194

123.0375, 0.3518,
0.3289

 0.9193, 0.5297,
0.3183

155.1859, 0.3488,
0.3290

 0.0000, 1.0000,
0.0000

192.4967, 0.3463,

 0.0000, 0.0000,

0.3290

0.0000

235.3543, 0.3441,
0.3291

■ 26.2778, 0.3785,
0.3277

■ 26.2778, 0.3785,
0.3277

■ 21.6381, 0.4112,
0.3273

■ 31.8392, 0.3519,
0.3281

■ 17.8669, 0.4504,
0.3270

■ 38.3644, 0.3305,
0.3286

■ 14.9113, 0.4951,
0.3269


■ 45.8973, 0.3133,
0.3290

■ 12.7111, 0.5422,
0.3271


■ 54.4781, 0.2996,
0.3294


■ 11.1978, 0.5859,
0.3276


■ 64.1448, 0.2885,
0.3297

 10.2906, 0.6190,
0.3284

 74.9334, 0.2795,
0.3300

 9.8329, 0.6380,
0.3289

 86.8783, 0.2721,
0.3303

 88.5655, 0.2706,
0.3289

Harmonies

Analogous

The Analogous color harmony consists of three colors that are next to each other on the color wheel.



26.2778, 0.3477, 0.2981



26.2778, 0.3785, 0.3277



26.2778, 0.3904, 0.3593

Triad

The Triadic color harmony groups three colors that are evenly spaced from another and form a triangle on the color wheel.



26.2778, 0.3785, 0.3277



26.2778, 0.3132, 0.3908



26.2778, 0.2485, 0.2709

Complementary

The Complementary color scheme is a pair of colors which are on the opposite of each other on the color wheel.



26.2778, 0.3785, 0.3277



40.7834, 0.2703, 0.3304

Split Complementary

Split-complementary colors differ from the complementary color scheme. The scheme consists of three colors, the original color and two neighbors of the complement color.



26.2778, 0.2408, 0.2914



26.2778, 0.3785, 0.3277



26.2778, 0.2766, 0.3626

Square

The Square scheme is like the rectangle color scheme, but the four colors are evenly spaced on the color wheel.



26.2778, 0.3785, 0.3277



26.2778, 0.3511, 0.3987



26.2778, 0.2507, 0.3248



26.2778, 0.2724, 0.2661

Rectangle

The Rectangle color scheme consists of four colors that form a rectangle on the color wheel.



26.2778, 0.3785, 0.3277



26.2778, 0.3857, 0.3780



26.2778, 0.2507, 0.3248



26.2778, 0.2440, 0.2760

Sweetspot

The Sweet Spot groups the original color and five complimentary colors.



26.2790, 0.3785, 0.3277



70.2765, 0.3281, 0.3286



27.8626, 0.3142, 0.2543



14.7960, 0.3308, 0.3286



91.1408, 0.3127, 0.3290



17.8868, 0.3127, 0.3290

Same Dimension

The Same Dimension uses a secret algorithm to generate beautiful new colors.



26.2790, 0.3785, 0.3277



41.7108, 0.3980, 0.3275



33.6815, 0.3691, 0.3656



8.5078, 0.3284, 0.3286



6.7786, 0.6376, 0.3286



0.2141, 0.6272, 0.3229

Inverse Universe

The Inverse Universe completely reimagines the original color for something new.



26.2790, 0.3785, 0.3277



41.7108, 0.3980, 0.3275



31.3277, 0.2652, 0.2892



8.5078, 0.3284, 0.3286



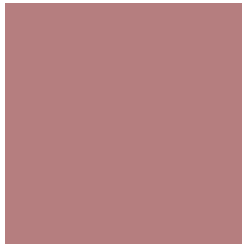
6.7786, 0.6376, 0.3286



0.2141, 0.6272, 0.3229

Previews

White Background



This preview shows how the Yxy color 26.2778, 0.3785, 0.3277 looks on a white background.

Color Contrast Check

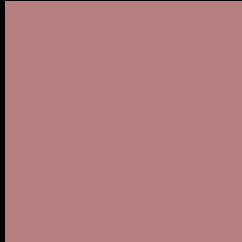
Large Text (above 18pt) WCAG AA ✓ Pass

Any Text WCAG AA ✗ Fail

Large Text (above 18pt) WCAG AAA ✗ Fail

Any Text WCAG AAA ✗ Fail

Black Background



This preview shows how the Yxy color 26.2778, 0.3785, 0.3277 looks on a black background.

Color Contrast Check

Large Text (above 18pt) WCAG AA ✓ Pass

Any Text WCAG AA ✓ Pass

Large Text (above 18pt) WCAG AAA ✓ Pass

Any Text WCAG AAA × Fail

If you want to check with other color combinations, try the [Color Contrast Checker](#).

Yxy 26.2778, 0.3785, 0.3277

Background



This preview shows how black text looks on a background with the Yxy color 26.2778, 0.3785, 0.3277.



This preview shows how white text looks on a background with the Yxy color 26.2778, 0.3785, 0.3277.

Color Blindness Simulation

Color vision deficiency is a very complex topic, and I could not describe the different causes any better than Wikipedia does, so if you want to learn more, you should check out their [article about color blindness](#).

Dichromacy



Original Color

26.2778, 0.3785, 0.3277

Protanopia

26.4067, 0.3232, 0.3389

Deuteranopia

26.2822, 0.3525, 0.3449



Tritanopia

26.3335, 0.3714, 0.3162

Trichromacy



Original Color

26.2778, 0.3785, 0.3277

Protanomaly

26.1347, 0.3422, 0.3354

Deuteranomaly

26.3337, 0.3619, 0.3383

Tritanomaly

26.2510, 0.3751, 0.3206

Monochromacy



Original Color

26.2778, 0.3785, 0.3277

Achromatopsia

27.4677, 0.3127, 0.3290

Achromatomaly

26.8656, 0.3352, 0.3291

CSS Examples

Text

The CSS property to change the color of the text to Yxy 26.2778, 0.3785, 0.3277 is called "color". The color property can be set on classes, ids or directly on the HTML element.

This example shows how text in the color `rgb(181, 126, 127)` looks like.

```
.text, #text, p{  
  color:rgb(181, 126, 127)  
}
```

If you want to add a text shadow in that color use the text-shadow property, you can generate a text shadow directly with our [CSS Text Shadow Generator](#).

Here you see how black text with a 4 pixel rgb(181, 126, 127) colored shadow looks like.

```
.shadow{ text-shadow: 4px 4px 2px rgb(181, 126, 127) }
```

Border

The CSS property to change the border of an element to Yxy 26.2778, 0.3785, 0.3277 is called "border". The border property can be set on classes, ids or directly on the HTML element.

This example shows the color as border, it can be applied via the CSS property "border" or "border-color".

```
.border, #border, table{ border:4px solid rgb(181, 126, 127) }
```

If only the border color should be changed use the property `border-color`.

```
.border{ border-color:rgb(181, 126, 127) }
```

If you want to add a box shadow in that color use:

Here you see how a box with a 4 pixel `rgb(181, 126, 127)` colored shadow looks like.

```
.boxshadow{ -moz-box-shadow:4px 4px 4px  
4px rgb(181, 126, 127); -webkit-box-  
shadow:4px 4px 4px 4px rgb(181, 126, 127);  
box-shadow:4px 4px 4px 4px rgb(181, 126,  
127) }
```


Background

The CSS property to change the background color of an element to Yxy 26.2778, 0.3785, 0.3277 is called "background". The background property can be set on classes, ids or directly on the HTML element.

```
.background, #background, body{  
background: rgb(181, 126, 127) }
```

If only the background color should be changed can be used:

```
.background{ background-color: rgb(181,  
126, 127) }
```

This example shows the color as background, it is applied via the CSS property "background".

To optimize and compress your CSS code, you can use our [online CSS compressor and optimizer](#) based on csstidy. If you want to create a linear or radial gradient as background or border, check our [CSS Gradient Generator](#).

Hey! You found this booklet interesting? Support Converting Colors with the new Membership Option!

The pro membership hides all ads, plus gives you double the colors in the color bucket, and more awesome pro features!

[Learn more, Memberships starting at \\$2.50/m!](#)

**Follow me
on Twitter!**

@ConvertingColor