

Converting Colors

Yxy(26.6434, 0.3662, 0.3219)

Have a look what the booklet for
Yxy(26.6434, 0.3662, 0.3219)
contains.

Yxy(26.5968, 0.3668, 0.3219)	3
<i>Conversions</i>	4
<i>Details</i>	6
<i>Harmonies</i>	12
<i>Previews</i>	24
<i>Color Blindness Simulation</i>	27
<i>CSS Examples</i>	30

Color

Yxy(26.5968, 0.3668, 0.3219)

Conversions

Conversions Part 1

Format	Color
Hex	B28085
RGB	178, 128, 133
RGB Percent	70%, 50%, 52%
CMY	0.3021, 0.4980, 0.4785
CMYK	0.00, 0.28, 0.25, 0.30
HSL	354°, 24%, 60%
HSV	354°, 28%, 70%
XYZ	30.3066, 26.5968, 25.7210
YIQ	143.5200, 28.1950, 12.1550

Conversions

Conversions Part 2

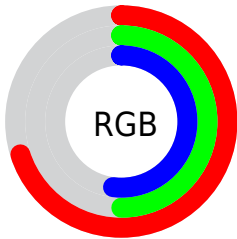
Format	Color
RYB	178, 128, 133
Decimal	11698309
CIELab	58.60, 20.04, 4.99
CIELCh	59, 20.651, 13.969
Yxy	26.5968, 0.3668, 0.3219
Android (android.graphics.Color)	4289888389 (0xFFB28085)
YUV	143.5200, -5.1864, 30.2390
Hunter-Lab	51.5721, 14.6454, 6.5303

Details

The Yxy color **26.5968, 0.3668, 0.3219** is a light color, and the websafe version is hex **CC9999**. A complement of this color would be **39.4363, 0.2760, 0.3364**, and the grayscale version is **27.6997, 0.3127, 0.3290**.

A 20% lighter version of the original color is **54.2551, 0.3557, 0.3236**, and **10.3740, 0.3860, 0.3169** is the 20% darker color. If you saturate the color by 10%, you get **21.9448, 0.3952, 0.3193**, and if you desaturate by 10%, it is **32.1332, 0.3437, 0.3245**.

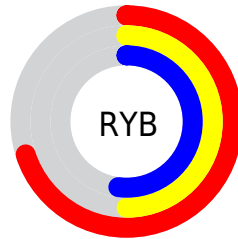
Distribution



Red (70%)

Green (50%)

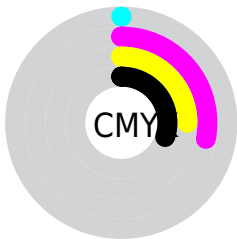
Blue (52%)



Red (70%)

Yellow (50%)

Blue (52%)

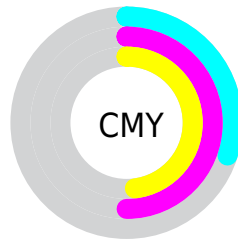


Cyan (0%)

Magenta (28%)

Yellow (25%)

Black (30%)



Cyan (30%)


Magenta (50%)


Yellow (48%)

Brightness & Saturation Gradients


These gradients show how the Yxy color 26.5968, 0.3668, 0.3219 changes by changing the brightness by 10 percent. The first figure shows a shift by +10% for each color and the second figure -10%.


Similar to the brightness gradients but the following saturation gradients show a change of the Yxy color 26.5968, 0.3668, 0.3219 by changing the saturation by 10% instead.


 26.5968, 0.3668,
0.3219


 26.5968, 0.3668,
0.3219


285.6996, 0.3370,
0.3262


 17.2706, 0.3753,
0.3205


 54.2362, 0.3553,
0.3237

 10.4276, 0.3869,
0.3185


 73.3182, 0.3512,
0.3243

 5.6834, 0.4037,
0.3154

 96.4209, 0.3478,
0.3247

 2.6535, 0.4301,
0.3100

123.9288, 0.3449,
0.3251

 0.9537, 0.4813,
0.3013

156.2262, 0.3425,
0.3255

 0.0000, 1.0000,
0.0000

193.6976, 0.3404,

 0.0000, 0.0000,

0.3257

0.0000

236.7272, 0.3386,
0.3260

■ 26.5968, 0.3668,
0.3219

■ 26.5968, 0.3668,
0.3219

■ 21.9448, 0.3952,
0.3193

■ 32.1332, 0.3437,
0.3245

■ 18.1279, 0.4295,
0.3170

■ 38.5925, 0.3251,
0.3271

■ 15.0977, 0.4695,
0.3153


■ 46.0155, 0.3101,
0.3294

■ 12.7992, 0.5135,
0.3148


■ 54.4396, 0.2980,
0.3316

■ 11.1703, 0.5577,
0.3159


■ 63.9000, 0.2881,
0.3336

 10.1389, 0.5963,
0.3189

 74.4302, 0.2801,
0.3354

 9.5894, 0.6240,
0.3230

 86.0623, 0.2736,
0.3370

 9.5039, 0.6282,
0.3234

 88.2013, 0.2691,
0.3289

Harmonies

Analogous

The Analogous color harmony consists of three colors that are next to each other on the color wheel.



26.5968, 0.3368, 0.2961



26.5968, 0.3668, 0.3219



26.5968, 0.3816, 0.3506

Triad

The Triadic color harmony groups three colors that are evenly spaced from another and form a triangle on the color wheel.



26.5968, 0.3668, 0.3219



26.5968, 0.3210, 0.3873



26.5968, 0.2519, 0.2797

Complementary

The Complementary color scheme is a pair of colors which are on the opposite of each other on the color wheel.



26.5968, 0.3668, 0.3219



39.4363, 0.2760, 0.3364

Split Complementary

Split-complementary colors differ from the complementary color scheme. The scheme consists of three colors, the original color and two neighbors of the complement color.



26.5968, 0.2484, 0.3012



26.5968, 0.3668, 0.3219



26.5968, 0.2870, 0.3656

Square

The Square scheme is like the rectangle color scheme, but the four colors are evenly spaced on the color wheel.



26.5968, 0.3668, 0.3219



26.5968, 0.3540, 0.3903



26.5968, 0.2609, 0.3329



26.5968, 0.2707, 0.2720

Rectangle

The Rectangle color scheme consists of four colors that form a rectangle on the color wheel.



26.5968, 0.3668, 0.3219



26.5968, 0.3805, 0.3683



26.5968, 0.2609, 0.3329



26.5968, 0.2490, 0.2854

Sweetspot

The Sweet Spot groups the original color and five complimentary colors.



26.5980, 0.3668, 0.3219



69.9209, 0.3252, 0.3271



27.5381, 0.3106, 0.2593



15.0784, 0.3277, 0.3267



91.1408, 0.3127, 0.3290



17.8868, 0.3127, 0.3290

Same Dimension

The Same Dimension uses a secret algorithm to generate beautiful new colors.



26.5980, 0.3668, 0.3219



42.5698, 0.3847, 0.3202



32.2001, 0.3651, 0.3580



8.5185, 0.3272, 0.3268



6.8074, 0.6265, 0.3225



0.2186, 0.5786, 0.2961

Inverse Universe

The Inverse Universe completely reimagines the original color for something new.



26.5980, 0.3668, 0.3219



42.5698, 0.3847, 0.3202



32.2540, 0.2695, 0.2981



8.5185, 0.3272, 0.3268



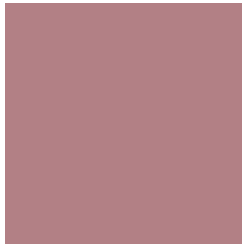
6.8074, 0.6265, 0.3225



0.2186, 0.5786, 0.2961

Previews

White Background



This preview shows how the Yxy color 26.5968, 0.3668, 0.3219 looks on a white background.

Color Contrast Check

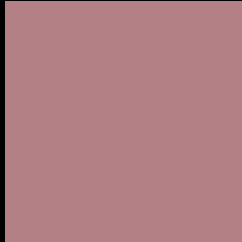
Large Text (above 18pt) WCAG AA ✓ Pass

Any Text WCAG AA ✗ Fail

Large Text (above 18pt) WCAG AAA ✗ Fail

Any Text WCAG AAA ✗ Fail

Black Background



This preview shows how the Yxy color 26.5968, 0.3668, 0.3219 looks on a black background.

Color Contrast Check

Large Text (above 18pt) WCAG AA ✓ Pass

Any Text WCAG AA ✓ Pass

Large Text (above 18pt) WCAG AAA ✓ Pass

Any Text WCAG AAA × Fail

If you want to check with other color combinations, try the [Color Contrast Checker](#).

Yxy 26.5968, 0.3668, 0.3219

Background



This preview shows how black text looks on a background with the Yxy color 26.5968, 0.3668, 0.3219.



This preview shows how white text looks on a background with the Yxy color 26.5968, 0.3668, 0.3219.

Color Blindness Simulation

Color vision deficiency is a very complex topic, and I could not describe the different causes any better than Wikipedia does, so if you want to learn more, you should check out their [article about color blindness](#).

Dichromacy



Original Color

26.5968, 0.3668, 0.3219

Protanopia

26.8725, 0.3170, 0.3306

Deuteranopia

26.6179, 0.3443, 0.3370



Tritanopia

26.4499, 0.3623, 0.3146

Trichromacy



Original Color

26.5968, 0.3668, 0.3219

Protanomaly

26.4824, 0.3343, 0.3275

Deuteranomaly

26.5480, 0.3522, 0.3307

Tritanomaly

26.4213, 0.3635, 0.3160

Monochromacy



Original Color

26.5968, 0.3668, 0.3219

Achromatopsia

27.8894, 0.3127, 0.3290

Achromatomaly

27.1383, 0.3306, 0.3259

CSS Examples

Text

The CSS property to change the color of the text to Yxy 26.5968, 0.3668, 0.3219 is called "color". The color property can be set on classes, ids or directly on the HTML element.

This example shows how text in the color `rgb(178, 128, 133)` looks like.

```
.text, #text, p{  
    color:rgb(178, 128, 133)  
}
```

If you want to add a text shadow in that color use the text-shadow property, you can generate a text shadow directly with our [CSS Text Shadow Generator](#).

Here you see how black text with a 4 pixel rgb(178, 128, 133) colored shadow looks like.

```
.shadow{ text-shadow: 4px 4px 2px rgb(178, 128, 133) }
```

Border

The CSS property to change the border of an element to Yxy 26.5968, 0.3668, 0.3219 is called "border". The border property can be set on classes, ids or directly on the HTML element.

This example shows the color as border, it can be applied via the CSS property "border" or "border-color".

```
.border, #border, table{ border:4px solid rgb(178, 128, 133) }
```

If only the border color should be changed use the property `border-color`.

```
.border{ border-color:rgb(178, 128, 133) }
```

If you want to add a box shadow in that color use:

Here you see how a box with a 4 pixel `rgb(178, 128, 133)` colored shadow looks like.

```
.boxshadow{ -moz-box-shadow:4px 4px 4px  
4px rgb(178, 128, 133); -webkit-box-  
shadow:4px 4px 4px 4px rgb(178, 128, 133);  
box-shadow:4px 4px 4px 4px rgb(178, 128,  
133) }
```


Background

The CSS property to change the background color of an element to Yxy 26.5968, 0.3668, 0.3219 is called "background". The background property can be set on classes, ids or directly on the HTML element.

```
.background, #background, body{  
background: rgb(178, 128, 133) }
```

If only the background color should be changed can be used:

```
.background{ background-color: rgb(178,  
128, 133) }
```

This example shows the color as background, it is applied via the CSS property "background".

To optimize and compress your CSS code, you can use our [online CSS compressor and optimizer](#) based on csstidy. If you want to create a linear or radial gradient as background or border, check our [CSS Gradient Generator](#).

Hey! You found this booklet interesting? Support Converting Colors with the new Membership Option!

The pro membership hides all ads, plus gives you double the colors in the color bucket, and more awesome pro features!

[Learn more, Memberships starting at \\$2.50/m!](#)

**Follow me
on Twitter!**

@ConvertingColor