

Converting Colors

$Y_{xy}(26.7217, 0.3753, 0.3317)$

Have a look what the booklet for
Yxy(26.7217, 0.3753, 0.3317)
contains.

Yxy(26.8165, 0.3749, 0.3321)	3
Conversions	4
Details	6
Harmonies	12
Previews	24
Color Blindness Simulation	27
CSS Examples	30

Color

Yxy(26.8165, 0.3749, 0.3321)

Conversions

Conversions Part 1

Format	Color
Hex	B3817F
RGB	179, 129, 127
RGB Percent	70%, 51%, 50%
CMY	0.2980, 0.4941, 0.5020
CMYK	0.00, 0.28, 0.29, 0.30
HSL	2°, 25%, 60%
HSV	2°, 29%, 70%
XYZ	30.2725, 26.8165, 23.6592
YIQ	143.7220, 30.4420, 9.9780

Conversions

Conversions Part 2

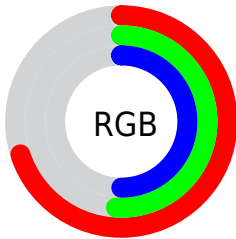
Format	Color
R_{YB}	179, 129, 127
Decimal	11764095
CIE _{Lab}	58.80, 19.03, 8.73
CIE _{LCh}	59, 20.937, 24.655
Yxy	26.8165, 0.3749, 0.3321
Android (android.graphics.Color)	4289954175 (0xFFB3817F)
YUV	143.7220, -8.2439, 30.9388
Hunter-Lab	51.7847, 13.7253, 9.1610

Details

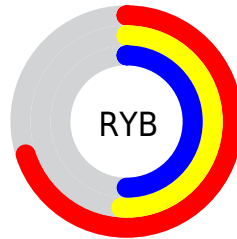
The Yxy color **26.8165, 0.3749, 0.3321** is a dark color, and the websafe version is hex **CC9999**. A complement of this color would be **39.2137, 0.2710, 0.3259**, and the grayscale version is **27.7976, 0.3127, 0.3290**.

A 20% lighter version of the original color is **54.5841, 0.3616, 0.3314**, and **10.5020, 0.3984, 0.3313** is the 20% darker color. If you saturate the color by 10%, you get **22.2327, 0.4066, 0.3332**, and if you desaturate by 10%, it is **32.2495, 0.3490, 0.3310**.

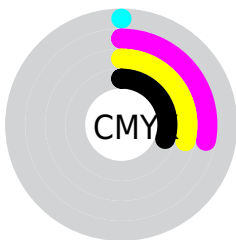
Distribution



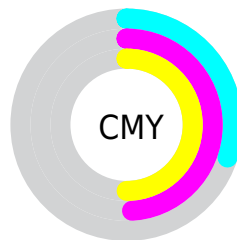
- Red (70%)
- Green (51%)
- Blue (50%)



- Red (70%)
- Yellow (51%)
- Blue (50%)



- Cyan (0%)
- Magenta (28%)
- Yellow (29%)
- Black (30%)





- Cyan (30%)
- Magenta (49%)
- Yellow (50%)

Brightness & Saturation Gradients

These gradients show how the Yxy color 26.8165, 0.3749, 0.3321 changes by changing the brightness by 10 percent. The first figure shows a shift by +10% for each color and the second figure -10%.


Similar to the brightness gradients but the following saturation gradients show a change of the Yxy color 26.8165, 0.3749, 0.3321 by changing the saturation by 10% instead.

 26.8165, 0.3749,
0.3321


 26.8165, 0.3749,
0.3321


286.7675, 0.3407,
0.3311


 17.4355, 0.3847,
0.3321


 54.5893, 0.3616,
0.3319

 10.5454, 0.3980,
0.3319


 73.7498, 0.3569,
0.3318

 5.7621, 0.4173,
0.3312

 96.9389, 0.3530,
0.3316

 2.7010, 0.4475,
0.3290

124.5410, 0.3497,
0.3315

 0.9777, 0.5154,
0.3317

156.9406, 0.3469,
0.3314

 0.0000, 1.0000,
0.0000

194.5219, 0.3446,

 0.0000, 0.0000,

0.3313

0.0000

237.6694, 0.3425,
0.3312

■ 26.8165, 0.3749,
0.3321

■ 26.8165, 0.3749,
0.3321

■ 22.2327, 0.4066,
0.3332

■ 32.2495, 0.3490,
0.3310

■ 18.4518, 0.4446,
0.3342

■ 38.5676, 0.3281,
0.3299

■ 15.4286, 0.4881,
0.3350

■ 45.8091, 0.3113,
0.3289

■ 13.1120, 0.5346,
0.3352

■ 54.0092, 0.2977,
0.3280

■ 11.4447, 0.5789,
0.3347

■ 63.2009, 0.2866,
0.3272

■ 10.3604, 0.6139,
0.3334

■ 73.4159, 0.2776,
0.3265

■ 9.7731, 0.6355,
0.3322

■ 84.6844, 0.2702,
0.3258

■ 9.7340, 0.6372,
0.3323

■ 88.3245, 0.2696,
0.3289

Harmonies

Analogous

The Analogous color harmony consists of three colors that are next to each other on the color wheel.



26.8165, 0.3491, 0.3043



26.8165, 0.3749, 0.3321



26.8165, 0.3829, 0.3607

Triad

The Triadic color harmony groups three colors that are evenly spaced from another and form a triangle on the color wheel.



26.8165, 0.3749, 0.3321



26.8165, 0.3085, 0.3821



26.8165, 0.2564, 0.2747

Complementary

The Complementary color scheme is a pair of colors which are on the opposite of each other on the color wheel.



26.8165, 0.3749, 0.3321



39.2137, 0.2710, 0.3259

Split Complementary

Split-complementary colors differ from the complementary color scheme. The scheme consists of three colors, the original color and two neighbors of the complement color.



26.8165, 0.2471, 0.2917



26.8165, 0.3749, 0.3321



26.8165, 0.2760, 0.3549

Square

The Square scheme is like the rectangle color scheme, but the four colors are evenly spaced on the color wheel.



26.8165, 0.3749, 0.3321



26.8165, 0.3433, 0.3922



26.8165, 0.2540, 0.3208



26.8165, 0.2802, 0.2721

Rectangle

The Rectangle color scheme consists of four colors that form a rectangle on the color wheel.



26.8165, 0.3749, 0.3321



26.8165, 0.3770, 0.3768



26.8165, 0.2540, 0.3208



26.8165, 0.2516, 0.2788

Sweetspot

The Sweet Spot groups the original color and five complimentary colors.



26.8178, 0.3749, 0.3321



68.9470, 0.3283, 0.3299



27.9487, 0.3178, 0.2602



14.8917, 0.3310, 0.3301



91.1408, 0.3127, 0.3290



17.8868, 0.3127, 0.3290

Same Dimension

The Same Dimension uses a secret algorithm to generate beautiful new colors.



26.8178, 0.3749, 0.3321



42.4901, 0.3949, 0.3328



34.4722, 0.3647, 0.3687



8.5559, 0.3286, 0.3299



6.9001, 0.6366, 0.3327



0.2344, 0.6224, 0.3440

Inverse Universe

The Inverse Universe completely reimagines the original color for something new.



39.2137, 0.2710, 0.3259



68.3898, 0.2629, 0.3251



29.9874, 0.2668, 0.2857



9.5744, 0.2986, 0.3281



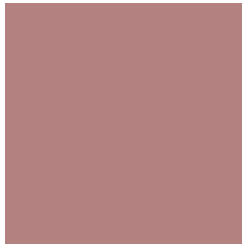
23.2029, 0.2214, 0.3171



0.7472, 0.2224, 0.3206

Previews

White Background



This preview shows how the Yxy color 26.8165, 0.3749, 0.3321 looks on a white background.

Color Contrast Check

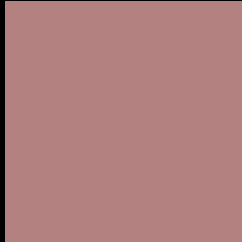
Large Text (above 18pt) WCAG AA ✓ Pass

Any Text WCAG AA ✗ Fail

Large Text (above 18pt) WCAG AAA ✗ Fail

Any Text WCAG AAA ✗ Fail

Black Background



This preview shows how the Yxy color 26.8165, 0.3749, 0.3321 looks on a black background.

Color Contrast Check

Large Text (above 18pt) WCAG AA ✓ Pass

Any Text WCAG AA ✓ Pass

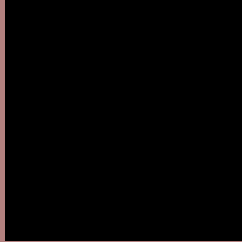
Large Text (above 18pt) WCAG AAA ✓ Pass

Any Text WCAG AAA × Fail

If you want to check with other color combinations, try the [Color Contrast Checker](#).

Yxy 26.8165, 0.3749, 0.3321

Background



This preview shows how black text looks on a background with the Yxy color 26.8165, 0.3749, 0.3321.



This preview shows how white text looks on a background with the Yxy color 26.8165, 0.3749, 0.3321.

Color Blindness Simulation

Color vision deficiency is a very complex topic, and I could not describe the different causes any better than Wikipedia does, so if you want to learn more, you should check out their [article about color blindness](#).

Dichromacy



Original Color

26.8165, 0.3749, 0.3321

Protanopia

26.8542, 0.3263, 0.3421

Deuteranopia

26.9747, 0.3519, 0.3463



Tritanopia

26.6882, 0.3647, 0.3147

Trichromacy



Original Color

26.8165, 0.3749, 0.3321

Protanomaly

26.7991, 0.3429, 0.3386

Deuteranomaly

26.8814, 0.3611, 0.3414

Tritanomaly

26.8351, 0.3692, 0.3219

Monochromacy



Original Color

26.8165, 0.3749, 0.3321

Achromatopsia

27.8894, 0.3127, 0.3290

Achromatomaly

27.4683, 0.3337, 0.3306

CSS Examples

Text

The CSS property to change the color of the text to Yxy 26.8165, 0.3749, 0.3321 is called "color". The color property can be set on classes, ids or directly on the HTML element.

This example shows how text in the color `rgb(179, 129, 127)` looks like.

```
.text, #text, p{  
    color:rgb(179, 129, 127)  
}
```

If you want to add a text shadow in that color use the text-shadow property, you can generate a text shadow directly with our [CSS Text Shadow Generator](#).

Here you see how black text with a 4 pixel rgb(179, 129, 127) colored shadow looks like.

```
.shadow{ text-shadow: 4px 4px 2px rgb(179, 129, 127) }
```

Border

The CSS property to change the border of an element to Yxy 26.8165, 0.3749, 0.3321 is called "border". The border property can be set on classes, ids or directly on the HTML element.

This example shows the color as border, it can be applied via the CSS property "border" or "border-color".

```
.border, #border, table{ border:4px solid rgb(179, 129, 127) }
```

If only the border color should be changed use the property `border-color`.

```
.border{ border-color:rgb(179, 129, 127) }
```

If you want to add a box shadow in that color use:

Here you see how a box with a 4 pixel `rgb(179, 129, 127)` colored shadow looks like.

```
.boxshadow{ -moz-box-shadow:4px 4px 4px 4px rgb(179, 129, 127); -webkit-box-shadow:4px 4px 4px 4px rgb(179, 129, 127); box-shadow:4px 4px 4px 4px rgb(179, 129, 127) }
```


Background

The CSS property to change the background color of an element to Yxy 26.8165, 0.3749, 0.3321 is called "background". The background property can be set on classes, ids or directly on the HTML element.

```
.background, #background, body{  
background: rgb(179, 129, 127) }
```

If only the background color should be changed can be used:

```
.background{ background-color: rgb(179,  
129, 127) }
```

This example shows the color as background, it is applied via the CSS property "background".

To optimize and compress your CSS code, you can use our [online CSS compressor and optimizer](#) based on csstidy. If you want to create a linear or radial gradient as background or border, check our [CSS Gradient Generator](#).

Hey! You found this booklet interesting? Support Converting Colors with the new Membership Option!

The pro membership hides all ads, plus gives you double the colors in the color bucket, and more awesome pro features!

[Learn more, Memberships starting at \\$2.50/m!](#)

**Follow me
on Twitter!**

@ConvertingColor