

Converting Colors

$Y_{xy}(26.9104, 0.4307, 0.3974)$

Have a look what the booklet for
Yxy(26.9104, 0.4307, 0.3974)
contains.

Yxy(26.9091, 0.4307, 0.3974)	3
Conversions	4
Details	6
Harmonies	12
Previews	24
Color Blindness Simulation	27
CSS Examples	30

Color

Yxy(26.9091, 0.4307, 0.3974)

Conversions

Conversions Part 1

Format	Color
Hex	B78352
RGB	183, 131, 82
RGB Percent	72%, 51%, 32%
CMY	0.2824, 0.4862, 0.6784
CMYK	0.00, 0.28, 0.55, 0.28
HSL	29°, 41%, 52%
HSV	29°, 55%, 72%
XYZ	29.1639, 26.9091, 11.6398
YIQ	140.9620, 46.7210, -4.2150

Conversions

Conversions Part 2

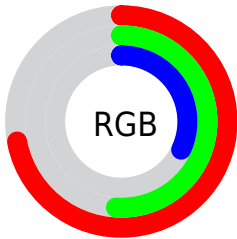
Format	Color
R_{YB}	183, 177, 82
Decimal	12026706
CIE _{Lab}	58.89, 14.44, 34.20
CIE _{LCh}	59, 37.123, 67.113
Yxy	26.9091, 0.4307, 0.3974
Android (android.graphics.Color)	4290216786 (0xFFB78352)
YUV	140.9620, -29.0683, 36.8673
Hunter-Lab	51.8740, 9.5746, 23.0079

Details

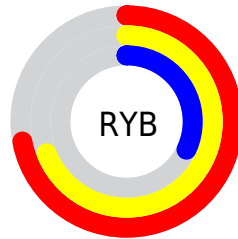
The Yxy color **26.9091, 0.4307, 0.3974** is a dark color, and the websafe version is hex **CC9966**. A complement of this color would be **22.2528, 0.2263, 0.2451**, and the grayscale version is **26.7233, 0.3127, 0.3290**.

A 20% lighter version of the original color is **54.6477, 0.4067, 0.3860**, and **10.6680, 0.4688, 0.4142** is the 20% darker color. If you saturate the color by 10%, you get **24.2521, 0.4585, 0.4066**, and if you desaturate by 10%, it is **29.8729, 0.4041, 0.3859**.

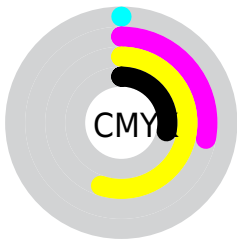
Distribution



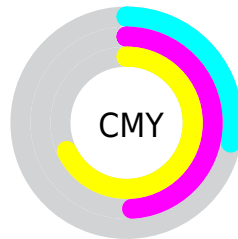
- Red (72%)
- Green (51%)
- Blue (32%)



- Red (72%)
- Yellow (69%)
- Blue (32%)



- Cyan (0%)
- Magenta (28%)
- Yellow (55%)
- Black (28%)





- Cyan (28%)
- Magenta (49%)
- Yellow (68%)

Brightness & Saturation Gradients


These gradients show how the Yxy color 26.9091, 0.4307, 0.3974 changes by changing the brightness by 10 percent. The first figure shows a shift by +10% for each color and the second figure -10%.


Similar to the brightness gradients but the following saturation gradients show a change of the Yxy color 26.9091, 0.4307, 0.3974 by changing the saturation by 10% instead.


 26.9091, 0.4307,
0.3974


 26.9091, 0.4307,
0.3974


287.2167, 0.3670,
0.3635


 17.5050, 0.4476,
0.4049


 54.7380, 0.4067,
0.3856


 10.5952, 0.4694,
0.4134


 73.9315, 0.3979,
0.3810

 5.7953, 0.4979,
0.4222

 97.1569, 0.3906,
0.3770

 2.7210, 0.5558,
0.4442

 124.7987, 0.3844,
0.3735

 0.9879, 0.5813,
0.4187

 157.2412, 0.3791,
0.3705

 0.0000, 1.0000,
0.0000

194.8687, 0.3745,

 0.0000, 0.0000,

0.3679

0.0000

238.0658, 0.3705,
0.3656

■ 26.9091, 0.4307,
0.3974

■ 26.9091, 0.4307,
0.3974

■ 24.2521, 0.4585,
0.4066

■ 29.8729, 0.4041,
0.3859

■ 21.8858, 0.4863,
0.4122

■ 33.1509, 0.3796,
0.3733

■ 19.7982, 0.5123,
0.4132

■ 36.7548, 0.3575,
0.3602

■ 17.9741, 0.5348,
0.4087

■ 40.6947, 0.3379,
0.3474

■ 17.1786, 0.5449,
0.4056

■ 44.9799, 0.3207,
0.3351

■ 49.6196, 0.3058,
0.3235

■ 54.6223, 0.2927,
0.3128

■ 59.9964, 0.2814,
0.3029

■ 65.7500, 0.2716,
0.2939

Harmonies

Analogous

The Analogous color harmony consists of three colors that are next to each other on the color wheel.



26.9091, 0.4337, 0.3507



26.9091, 0.4307, 0.3974



26.9091, 0.3945, 0.4333

Triad

The Triadic color harmony groups three colors that are evenly spaced from another and form a triangle on the color wheel.



26.9091, 0.4307, 0.3974



26.9091, 0.2302, 0.3484



26.9091, 0.2778, 0.2390

Complementary

The Complementary color scheme is a pair of colors which are on the opposite of each other on the color wheel.



26.9091, 0.4307, 0.3974



22.2528, 0.2263, 0.2451

Split Complementary

Split-complementary colors differ from the complementary color scheme. The scheme consists of three colors, the original color and two neighbors of the complement color.



26.9091, 0.2304, 0.2324



26.9091, 0.4307, 0.3974



26.9091, 0.2051, 0.2880

Square

The Square scheme is like the rectangle color scheme, but the four colors are evenly spaced on the color wheel.



26.9091, 0.4307, 0.3974



26.9091, 0.2781, 0.4095



26.9091, 0.2055, 0.2480



26.9091, 0.3399, 0.2644

Rectangle

The Rectangle color scheme consists of four colors that form a rectangle on the color wheel.



26.9091, 0.4307, 0.3974



26.9091, 0.3583, 0.4430



26.9091, 0.2055, 0.2480



26.9091, 0.2598, 0.2345

Sweetspot

The Sweet Spot groups the original color and five complimentary colors.



26.9104, 0.4307, 0.3974



71.3725, 0.3418, 0.3500



17.8257, 0.3874, 0.2571



15.4477, 0.3456, 0.3526



93.3107, 0.3127, 0.3290



18.7317, 0.3127, 0.3290

Same Dimension

The Same Dimension uses a secret algorithm to generate beautiful new colors.



26.9104, 0.4307, 0.3974



42.5988, 0.4639, 0.4080



43.8416, 0.3923, 0.4570



9.7124, 0.3276, 0.3401



12.1236, 0.5430, 0.4070



0.5514, 0.5030, 0.4388

Inverse Universe

The Inverse Universe completely reimagines the original color for something new.



22.2528, 0.2263, 0.2451



33.4082, 0.2098, 0.2229



11.5040, 0.2082, 0.1578



9.4632, 0.2985, 0.3176



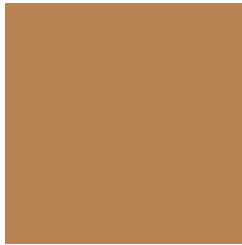
8.1294, 0.1791, 0.1648



0.4100, 0.1919, 0.2109

Previews

White Background



This preview shows how the Yxy color 26.9091, 0.4307, 0.3974 looks on a white background.

Color Contrast Check

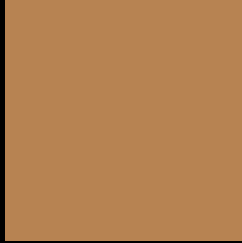
Large Text (above 18pt) WCAG AA ✓ Pass

Any Text WCAG AA × Fail

Large Text (above 18pt) WCAG AAA × Fail

Any Text WCAG AAA × Fail

Black Background



This preview shows how the Yxy color 26.9091, 0.4307, 0.3974 looks on a black background.

Color Contrast Check

Large Text (above 18pt) WCAG AA ✓ Pass

Any Text WCAG AA ✓ Pass

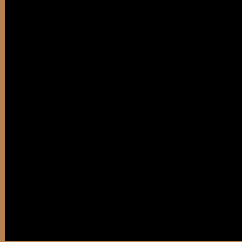
Large Text (above 18pt) WCAG AAA ✓ Pass

Any Text WCAG AAA × Fail

If you want to check with other color combinations, try the [Color Contrast Checker](#).

Yxy 26.9091, 0.4307, 0.3974

Background



This preview shows how black text looks on a background with the Yxy color 26.9091, 0.4307, 0.3974.



This preview shows how white text looks on a background with the Yxy color 26.9091, 0.4307, 0.3974.

Color Blindness Simulation

Color vision deficiency is a very complex topic, and I could not describe the different causes any better than Wikipedia does, so if you want to learn more, you should check out their [article about color blindness](#).

Dichromacy



Original Color

26.9091, 0.4307, 0.3974

Protanopia

26.9865, 0.3852, 0.4180

Deuteranopia

26.8063, 0.4168, 0.4080



Tritanopia

26.9533, 0.3774, 0.3166

Trichromacy



Original Color

26.9091, 0.4307, 0.3974

Protanomaly

26.8322, 0.4009, 0.4099

Deuteranomaly

26.9914, 0.4223, 0.4050

Tritanomaly

26.8557, 0.3988, 0.3462

Monochromacy



Original Color

26.9091, 0.4307, 0.3974

Achromatopsia

26.6356, 0.3127, 0.3290

Achromatomaly

26.3153, 0.3528, 0.3564

CSS Examples

Text

The CSS property to change the color of the text to Yxy 26.9091, 0.4307, 0.3974 is called "color". The color property can be set on classes, ids or directly on the HTML element.

This example shows how text in the color `rgb(183, 131, 82)` looks like.

```
.text, #text, p{  
    color:rgb(183, 131, 82)  
}
```

If you want to add a text shadow in that color use the text-shadow property, you can generate a text shadow directly with our [CSS Text Shadow Generator](#).

Here you see how black text with a 4 pixel rgb(183, 131, 82) colored shadow looks like.

```
.shadow{ text-shadow: 4px 4px 2px rgb(183, 131, 82) }
```

Border

The CSS property to change the border of an element to Yxy 26.9091, 0.4307, 0.3974 is called "border". The border property can be set on classes, ids or directly on the HTML element.

This example shows the color as border, it can be applied via the CSS property "border" or "border-color".

```
.border, #border, table{ border:4px solid rgb(183, 131, 82) }
```

If only the border color should be changed use the property `border-color`.

```
.border{ border-color:rgb(183, 131, 82) }
```

If you want to add a box shadow in that color use:

Here you see how a box with a 4 pixel `rgb(183, 131, 82)` colored shadow looks like.

```
.boxshadow{ -moz-box-shadow:4px 4px 4px  
4px rgb(183, 131, 82); -webkit-box-  
shadow:4px 4px 4px 4px rgb(183, 131, 82);  
box-shadow:4px 4px 4px 4px rgb(183, 131,  
82) }
```


Background

The CSS property to change the background color of an element to Yxy 26.9091, 0.4307, 0.3974 is called "background". The background property can be set on classes, ids or directly on the HTML element.

```
.background, #background, body{  
background: rgb(183, 131, 82) }
```

If only the background color should be changed can be used:

```
.background{ background-color: rgb(183,  
131, 82) }
```

This example shows the color as background, it is applied via the CSS property "background".

To optimize and compress your CSS code, you can use our [online CSS compressor and optimizer](#) based on csstidy. If you want to create a linear or radial gradient as background or border, check our [CSS Gradient Generator](#).

Hey! You found this booklet interesting? Support Converting Colors with the new Membership Option!

The pro membership hides all ads, plus gives you double the colors in the color bucket, and more awesome pro features!

[Learn more, Memberships starting at \\$2.50/m!](#)

**Follow me
on Twitter!**

@ConvertingColor