

Converting Colors

$Y_{xy}(27.0243, 0.3841, 0.3341)$

Have a look what the booklet for
Yxy(27.0243, 0.3841, 0.3341)
contains.

Yxy(27.0839, 0.3849, 0.3349)	3
Conversions	4
Details	6
Harmonies	12
Previews	24
Color Blindness Simulation	27
CSS Examples	30

Color

Yxy(27.0839, 0.3849, 0.3349)

Conversions

Conversions Part 1

Format	Color
Hex	B8807C
RGB	184, 128, 124
RGB Percent	72%, 50%, 49%
CMY	0.2784, 0.4981, 0.5137
CMYK	0.00, 0.30, 0.33, 0.28
HSL	4°, 30%, 60%
HSV	4°, 33%, 72%
XYZ	31.1275, 27.0839, 22.6602
YIQ	144.2880, 34.6600, 10.6280

Conversions

Conversions Part 2

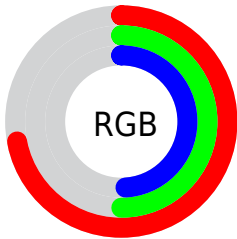
Format	Color
RYB	184, 128, 124
Decimal	12091516
CIELab	59.05, 21.15, 10.88
CIELCh	59, 23.779, 27.223
Yxy	27.0839, 0.3849, 0.3349
Android (android.graphics.Color)	4290281596 (0xFFB8807C)
YUV	144.2880, -10.0020, 34.8274
Hunter-Lab	52.0422, 15.6906, 10.6135

Details

The Yxy color $27.0839, 0.3849, 0.3349$ is a dark color, and the websafe version is hex `CC9999`. A complement of this color would be $40.4023, 0.2662, 0.3230$, and the grayscale version is $28.0438, 0.3127, 0.3290$.

A 20% lighter version of the original color is $54.8831, 0.3698, 0.3347$, and $10.6239, 0.4117, 0.3352$ is the 20% darker color. If you saturate the color by 10%, you get $22.5536, 0.4183, 0.3367$, and if you desaturate by 10%, it is $32.4624, 0.3574, 0.3330$.

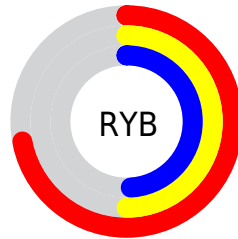
Distribution



Red (72%)

Green (50%)

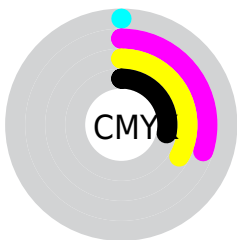
Blue (49%)



Red (72%)

Yellow (50%)

Blue (49%)

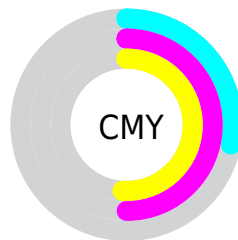


Cyan (0%)

Magenta (30%)

Yellow (33%)

Black (28%)



Cyan (28%)


Magenta (50%)

Yellow (51%)

Brightness & Saturation Gradients


These gradients show how the Yxy color 27.0839, 0.3849, 0.3349 changes by changing the brightness by 10 percent. The first figure shows a shift by +10% for each color and the second figure -10%.


Similar to the brightness gradients but the following saturation gradients show a change of the Yxy color 27.0839, 0.3849, 0.3349 by changing the saturation by 10% instead.


 27.0839, 0.3849,
0.3349


 27.0839, 0.3849,
0.3349


288.0631, 0.3452,
0.3326


 17.6362, 0.3962,
0.3351


 55.0185, 0.3695,
0.3343

 10.6891, 0.4115,
0.3352

 74.2742, 0.3640,
0.3340

 5.8582, 0.4337,
0.3346

 97.5680, 0.3595,
0.3337

 2.7591, 0.4680,
0.3324

125.2844, 0.3557,
0.3334

 1.0073, 0.5503,
0.3386

157.8077, 0.3525,
0.3332

 0.0000, 1.0000,
0.0000

195.5223, 0.3497,

 0.0000, 0.0000,

0.3330

0.0000

238.8127, 0.3473,
0.3328

■ 27.0839, 0.3849,
0.3349

■ 27.0839, 0.3849,
0.3349

■ 22.5536, 0.4183,
0.3367

■ 32.4624, 0.3574,
0.3330

■ 18.8247, 0.4577,
0.3383

■ 38.7253, 0.3350,
0.3312

■ 15.8515, 0.5019,
0.3392


■ 45.9112, 0.3168,
0.3294


■ 13.5824, 0.5477,
0.3392


■ 54.0555, 0.3022,
0.3278

■ 11.9592, 0.5894,
0.3379

■ 63.1915, 0.2902,
0.3264

 10.9144, 0.6203,
0.3353

 73.3512, 0.2805,
0.3251

 10.4602, 0.6352,
0.3338

 84.5648, 0.2724,
0.3240

 88.9320, 0.2721,
0.3289

Harmonies

Analogous

The Analogous color harmony consists of three colors that are next to each other on the color wheel.



27.0839, 0.3569, 0.3036



27.0839, 0.3849, 0.3349



27.0839, 0.3919, 0.3668

Triad

The Triadic color harmony groups three colors that are evenly spaced from another and form a triangle on the color wheel.



27.0839, 0.3849, 0.3349



27.0839, 0.3042, 0.3876



27.0839, 0.2511, 0.2670

Complementary

The Complementary color scheme is a pair of colors which are on the opposite of each other on the color wheel.



27.0839, 0.3849, 0.3349



40.4023, 0.2662, 0.3230

Split Complementary

Split-complementary colors differ from the complementary color scheme. The scheme consists of three colors, the original color and two neighbors of the complement color.



27.0839, 0.2393, 0.2843



27.0839, 0.3849, 0.3349



27.0839, 0.2685, 0.3551

Square

The Square scheme is like the rectangle color scheme, but the four colors are evenly spaced on the color wheel.



27.0839, 0.3849, 0.3349



27.0839, 0.3438, 0.4008



27.0839, 0.2453, 0.3161



27.0839, 0.2788, 0.2657

Rectangle

The Rectangle color scheme consists of four colors that form a rectangle on the color wheel.



27.0839, 0.3849, 0.3349



27.0839, 0.3837, 0.3847



27.0839, 0.2453, 0.3161



27.0839, 0.2452, 0.2710

Sweetspot

The Sweet Spot groups the original color and five complimentary colors.



27.0852, 0.3849, 0.3349



73.2082, 0.3302, 0.3307



27.9476, 0.3196, 0.2529



15.4073, 0.3329, 0.3310



93.3107, 0.3127, 0.3290



18.7317, 0.3127, 0.3290

Same Dimension

The Same Dimension uses a secret algorithm to generate beautiful new colors.



27.0852, 0.3849, 0.3349



43.1488, 0.4078, 0.3362



35.7662, 0.3720, 0.3751



9.1054, 0.3286, 0.3306



7.2473, 0.6342, 0.3346



0.2880, 0.6121, 0.3522

Inverse Universe

The Inverse Universe completely reimagines the original color for something new.



40.4023, 0.2662, 0.3230



70.9624, 0.2576, 0.3215



29.8851, 0.2606, 0.2778



10.1058, 0.2985, 0.3274



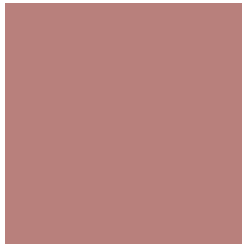
22.7044, 0.2190, 0.3084



0.8312, 0.2206, 0.3141

Previews

White Background



This preview shows how the Yxy color 27.0839, 0.3849, 0.3349 looks on a white background.

Color Contrast Check

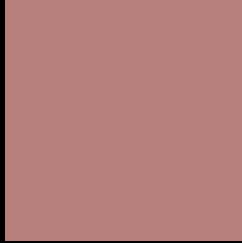
Large Text (above 18pt) WCAG AA ✓ Pass

Any Text WCAG AA ✗ Fail

Large Text (above 18pt) WCAG AAA ✗ Fail

Any Text WCAG AAA ✗ Fail

Black Background



This preview shows how the Yxy color 27.0839, 0.3849, 0.3349 looks on a black background.

Color Contrast Check

Large Text (above 18pt) WCAG AA ✓ Pass

Any Text WCAG AA ✓ Pass

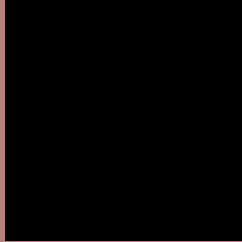
Large Text (above 18pt) WCAG AAA ✓ Pass

Any Text WCAG AAA × Fail

If you want to check with other color combinations, try the [Color Contrast Checker](#).

Yxy 27.0839, 0.3849, 0.3349

Background



This preview shows how black text looks on a background with the Yxy color 27.0839, 0.3849, 0.3349.



This preview shows how white text looks on a background with the Yxy color 27.0839, 0.3849, 0.3349.

Color Blindness Simulation

Color vision deficiency is a very complex topic, and I could not describe the different causes any better than Wikipedia does, so if you want to learn more, you should check out their [article about color blindness](#).

Dichromacy



Original Color

27.0839, 0.3849, 0.3349

Protanopia

27.2806, 0.3304, 0.3469

Deuteranopia

27.0830, 0.3587, 0.3525



Tritanopia

27.0136, 0.3722, 0.3150

Trichromacy



Original Color

27.0839, 0.3849, 0.3349

Protanomaly

27.0269, 0.3497, 0.3432

Deuteranomaly

27.1382, 0.3681, 0.3458

Tritanomaly

27.1590, 0.3767, 0.3221

Monochromacy



Original Color

27.0839, 0.3849, 0.3349

Achromatopsia

27.8894, 0.3127, 0.3290

Achromatomaly

27.3540, 0.3373, 0.3306

CSS Examples

Text

The CSS property to change the color of the text to Yxy 27.0839, 0.3849, 0.3349 is called "color". The color property can be set on classes, ids or directly on the HTML element.

This example shows how text in the color `rgb(184, 128, 124)` looks like.

```
.text, #text, p{  
    color:rgb(184, 128, 124)  
}
```

If you want to add a text shadow in that color use the text-shadow property, you can generate a text shadow directly with our [CSS Text Shadow Generator](#).

Here you see how black text with a 4 pixel rgb(184, 128, 124) colored shadow looks like.

```
.shadow{ text-shadow: 4px 4px 2px rgb(184, 128, 124) }
```

Border

The CSS property to change the border of an element to Yxy 27.0839, 0.3849, 0.3349 is called "border". The border property can be set on classes, ids or directly on the HTML element.

This example shows the color as border, it can be applied via the CSS property "border" or "border-color".

```
.border, #border, table{ border:4px solid rgb(184, 128, 124) }
```

If only the border color should be changed use the property `border-color`.

```
.border{ border-color:rgb(184, 128, 124) }
```

If you want to add a box shadow in that color use:

Here you see how a box with a 4 pixel `rgb(184, 128, 124)` colored shadow looks like.

```
.boxshadow{ -moz-box-shadow:4px 4px 4px  
4px rgb(184, 128, 124); -webkit-box-  
shadow:4px 4px 4px 4px rgb(184, 128, 124);  
box-shadow:4px 4px 4px 4px rgb(184, 128,  
124) }
```


Background

The CSS property to change the background color of an element to Yxy 27.0839, 0.3849, 0.3349 is called "background". The background property can be set on classes, ids or directly on the HTML element.

```
.background, #background, body{  
background: rgb(184, 128, 124) }
```

If only the background color should be changed can be used:

```
.background{ background-color: rgb(184,  
128, 124) }
```

This example shows the color as background, it is applied via the CSS property "background".

To optimize and compress your CSS code, you can use our [online CSS compressor and optimizer](#) based on csstidy. If you want to create a linear or radial gradient as background or border, check our [CSS Gradient Generator](#).

Hey! You found this booklet interesting? Support Converting Colors with the new Membership Option!

The pro membership hides all ads, plus gives you double the colors in the color bucket, and more awesome pro features!

[Learn more, Memberships starting at \\$2.50/m!](#)

**Follow me
on Twitter!**

@ConvertingColor