

Converting Colors

$Y_{xy}(27.2120, 0.4302, 0.3955)$

Have a look what the booklet for
Yxy(27.2120, 0.4302, 0.3955)
contains.

Yxy(27.0630, 0.4298, 0.3945)	3
<i>Conversions</i>	4
<i>Details</i>	6
<i>Harmonies</i>	12
<i>Previews</i>	24
<i>Color Blindness Simulation</i>	27
<i>CSS Examples</i>	30

Color

Yxy(27.0630, 0.4298, 0.3945)

Conversions

Conversions Part 1

Format	Color
Hex	B88354
RGB	184, 131, 84
RGB Percent	72%, 51%, 33%
CMY	0.2784, 0.4863, 0.6707
CMYK	0.00, 0.29, 0.54, 0.28
HSL	28°, 41%, 53%
HSV	28°, 54%, 72%
XYZ	29.4846, 27.0630, 12.0532
YIQ	141.4890, 46.6750, -3.3810

Conversions

Conversions Part 2

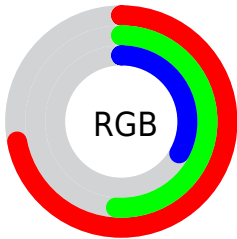
Format	Color
RYB	184, 173, 84
Decimal	12092244
CIELab	59.03, 15.06, 33.34
CIELCh	59, 36.578, 65.695
Yxy	27.0630, 0.4298, 0.3945
Android (android.graphics.Color)	4290282324 (0xFFB88354)
YUV	141.4890, -28.3421, 37.2821
Hunter-Lab	52.0221, 10.1299, 22.6784

Details

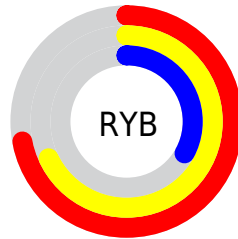
The Yxy color $27.0630, 0.4298, 0.3945$ is a dark color, and the websafe version is hex `CC9966`. A complement of this color would be $23.2330, 0.2280, 0.2493$, and the grayscale version is $26.9383, 0.3127, 0.3290$.

A 20% lighter version of the original color is $54.8795, 0.4059, 0.3837$, and $10.7574, 0.4678, 0.4107$ is the 20% darker color. If you saturate the color by 10%, you get $24.3156, 0.4582, 0.4036$, and if you desaturate by 10%, it is $30.1353, 0.4028, 0.3833$.

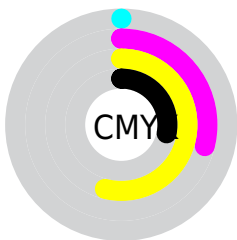
Distribution



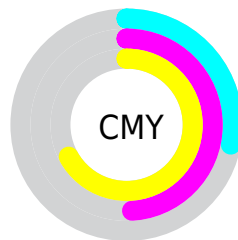
- Red (72%)
- Green (51%)
- Blue (33%)



- Red (72%)
- Yellow (68%)
- Blue (33%)



- Cyan (0%)
- Magenta (29%)
- Yellow (54%)
- Black (28%)





- Cyan (28%)
- Magenta (49%)
- Yellow (67%)

Brightness & Saturation Gradients


These gradients show how the Yxy color 27.0630, 0.4298, 0.3945 changes by changing the brightness by 10 percent. The first figure shows a shift by +10% for each color and the second figure -10%.


Similar to the brightness gradients but the following saturation gradients show a change of the Yxy color 27.0630, 0.4298, 0.3945 by changing the saturation by 10% instead.

 27.0630, 0.4298,
0.3945


 27.0630, 0.4298,
0.3945


287.9620, 0.3665,
0.3621


 17.6205, 0.4466,
0.4016


 54.9849, 0.4059,
0.3832

 10.6779, 0.4684,
0.4098


 74.2332, 0.3972,
0.3788


 5.8507, 0.4973,
0.4181

 97.5189, 0.3899,
0.3750

 2.7545, 0.5583,
0.4417

 125.2264, 0.3838,
0.3717

 1.0049, 0.5844,
0.4156

 157.7400, 0.3785,
0.3689

 0.0000, 1.0000,
0.0000

195.4442, 0.3740,

 0.0000, 0.0000,

0.3663

0.0000

238.7235, 0.3700,
0.3641

■ 27.0630, 0.4298,
0.3945

■ 27.0630, 0.4298,
0.3945

■ 24.3156, 0.4582,
0.4036

■ 30.1353, 0.4028,
0.3833

■ 21.8764, 0.4868,
0.4092

■ 33.5405, 0.3781,
0.3709

■ 19.7325, 0.5138,
0.4102

■ 37.2910, 0.3560,
0.3583

■ 17.8681, 0.5373,
0.4059

■ 41.3975, 0.3365,
0.3458

■ 16.9268, 0.5494,
0.4020

■ 45.8700, 0.3194,
0.3340

■ 50.7180, 0.3046,
0.3228

■ 55.9509, 0.2917,
0.3125

■ 61.5775, 0.2806,
0.3030

■ 67.6063, 0.2709,
0.2943

Harmonies

Analogous

The Analogous color harmony consists of three colors that are next to each other on the color wheel.



27.0630, 0.4309, 0.3483



27.0630, 0.4298, 0.3945



27.0630, 0.3955, 0.4305

Triad

The Triadic color harmony groups three colors that are evenly spaced from another and form a triangle on the color wheel.



27.0630, 0.4298, 0.3945



27.0630, 0.2333, 0.3512



27.0630, 0.2757, 0.2395

Complementary

The Complementary color scheme is a pair of colors which are on the opposite of each other on the color wheel.



27.0630, 0.4298, 0.3945



23.2330, 0.2280, 0.2493

Split Complementary

Split-complementary colors differ from the complementary color scheme. The scheme consists of three colors, the original color and two neighbors of the complement color.



27.0630, 0.2300, 0.2340



27.0630, 0.4298, 0.3945



27.0630, 0.2073, 0.2913

Square

The Square scheme is like the rectangle color scheme, but the four colors are evenly spaced on the color wheel.



27.0630, 0.4298, 0.3945



27.0630, 0.2814, 0.4103



27.0630, 0.2065, 0.2506



27.0630, 0.3365, 0.2638

Rectangle

The Rectangle color scheme consists of four colors that form a rectangle on the color wheel.



27.0630, 0.4298, 0.3945



27.0630, 0.3604, 0.4409



27.0630, 0.2065, 0.2506



27.0630, 0.2583, 0.2354

Sweetspot

The Sweet Spot groups the original color and five complimentary colors.



27.0643, 0.4298, 0.3945



73.5659, 0.3400, 0.3482



18.3448, 0.3832, 0.2558



15.5263, 0.3439, 0.3507



93.3107, 0.3127, 0.3290



18.7317, 0.3127, 0.3290

Same Dimension

The Same Dimension uses a secret algorithm to generate beautiful new colors.



27.0643, 0.4298, 0.3945



43.2710, 0.4632, 0.4048



43.7466, 0.3924, 0.4538



9.6896, 0.3276, 0.3398



11.8040, 0.5474, 0.4035



0.5402, 0.5061, 0.4363

Inverse Universe

The Inverse Universe completely reimagines the original color for something new.



23.2330, 0.2280, 0.2493



35.5933, 0.2119, 0.2282



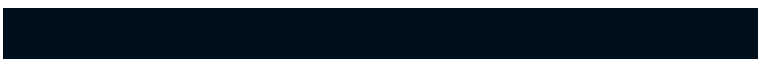
12.2127, 0.2103, 0.1632



9.4861, 0.2985, 0.3180



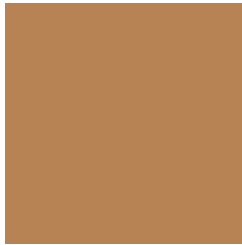
8.4847, 0.1806, 0.1700



0.4219, 0.1930, 0.2148

Previews

White Background



This preview shows how the Yxy color 27.0630, 0.4298, 0.3945 looks on a white background.

Color Contrast Check

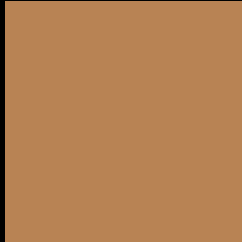
Large Text (above 18pt) WCAG AA ✓ Pass

Any Text WCAG AA × Fail

Large Text (above 18pt) WCAG AAA × Fail

Any Text WCAG AAA × Fail

Black Background



This preview shows how the Yxy color 27.0630, 0.4298, 0.3945 looks on a black background.

Color Contrast Check

Large Text (above 18pt) WCAG AA ✓ Pass

Any Text WCAG AA ✓ Pass

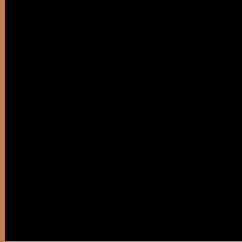
Large Text (above 18pt) WCAG AAA ✓ Pass

Any Text WCAG AAA × Fail

If you want to check with other color combinations, try the [Color Contrast Checker](#).

Yxy 27.0630, 0.4298, 0.3945

Background



This preview shows how black text looks on a background with the Yxy color 27.0630, 0.4298, 0.3945.



This preview shows how white text looks on a background with the Yxy color 27.0630, 0.4298, 0.3945.

Color Blindness Simulation

Color vision deficiency is a very complex topic, and I could not describe the different causes any better than Wikipedia does, so if you want to learn more, you should check out their [article about color blindness](#).

Dichromacy



Original Color

27.0630, 0.4298, 0.3945

Protanopia

27.0191, 0.3833, 0.4150

Deuteranopia

27.1171, 0.4139, 0.4067



Tritanopia

27.0798, 0.3785, 0.3166

Trichromacy



Original Color

27.0630, 0.4298, 0.3945

Protanomaly

26.9721, 0.4000, 0.4066

Deuteranomaly

27.0218, 0.4202, 0.4024

Tritanomaly

27.0045, 0.3988, 0.3448

Monochromacy



Original Color

27.0630, 0.4298, 0.3945

Achromatopsia

26.6356, 0.3127, 0.3290

Achromatomaly

26.4155, 0.3539, 0.3563

CSS Examples

Text

The CSS property to change the color of the text to Yxy 27.0630, 0.4298, 0.3945 is called "color". The color property can be set on classes, ids or directly on the HTML element.

This example shows how text in the color `rgb(184, 131, 84)` looks like.

```
.text, #text, p{  
    color:rgb(184, 131, 84)  
}
```

If you want to add a text shadow in that color use the text-shadow property, you can generate a text shadow directly with our [CSS Text Shadow Generator](#).

Here you see how black text with a 4 pixel rgb(184, 131, 84) colored shadow looks like.

```
.shadow{ text-shadow: 4px 4px 2px rgb(184, 131, 84) }
```

Border

The CSS property to change the border of an element to Yxy 27.0630, 0.4298, 0.3945 is called "border". The border property can be set on classes, ids or directly on the HTML element.

This example shows the color as border, it can be applied via the CSS property "border" or "border-color".

```
.border, #border, table{ border:4px solid rgb(184, 131, 84) }
```

If only the border color should be changed use the property `border-color`.

```
.border{ border-color:rgb(184, 131, 84) }
```

If you want to add a box shadow in that color use:

Here you see how a box with a 4 pixel `rgb(184, 131, 84)` colored shadow looks like.

```
.boxshadow{ -moz-box-shadow:4px 4px 4px  
4px rgb(184, 131, 84); -webkit-box-  
shadow:4px 4px 4px 4px rgb(184, 131, 84);  
box-shadow:4px 4px 4px 4px rgb(184, 131,  
84) }
```


Background

The CSS property to change the background color of an element to Yxy 27.0630, 0.4298, 0.3945 is called "background". The background property can be set on classes, ids or directly on the HTML element.

```
.background, #background, body{  
background: rgb(184, 131, 84) }
```

If only the background color should be changed can be used:

```
.background{ background-color: rgb(184,  
131, 84) }
```

This example shows the color as background, it is applied via the CSS property "background".

To optimize and compress your CSS code, you can use our [online CSS compressor and optimizer](#) based on csstidy. If you want to create a linear or radial gradient as background or border, check our [CSS Gradient Generator](#).

Hey! You found this booklet interesting? Support Converting Colors with the new Membership Option!

The pro membership hides all ads, plus gives you double the colors in the color bucket, and more awesome pro features!

[Learn more, Memberships starting at \\$2.50/m!](#)

**Follow me
on Twitter!**

@ConvertingColor