

# Converting Colors

$Y_{xy}(27.3103, 0.3721, 0.3587)$

Have a look what the booklet for  
Yxy(27.3103, 0.3721, 0.3587)  
contains.

<b>Yxy(27.3277, 0.3718, 0.3581)</b> .....	3
<b>Conversions</b> .....	4
<b>Details</b> .....	6
<b>Harmonies</b> .....	12
<b>Previews</b> .....	24
<b>Color Blindness Simulation</b> .....	27
<b>CSS Examples</b> .....	30

**Color**

**Yxy(27.3277, 0.3718, 0.3581)**

# Conversions

## Conversions Part 1

<b>Format</b>	<b>Color</b>
Hex	A98875
RGB	169, 136, 117
RGB Percent	66%, 53%, 46%
CMY	0.3374, 0.4666, 0.5411
CMYK	0.00, 0.20, 0.31, 0.34
HSL	22°, 23%, 56%
HSV	22°, 31%, 66%
XYZ	28.3732, 27.3277, 20.6122
YIQ	143.7010, 25.7670, 1.0870

# Conversions

## Conversions Part 2

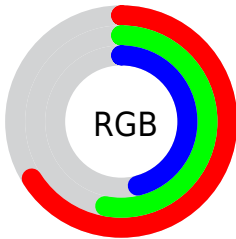
<b>Format</b>	<b>Color</b>
R <sub>Y</sub> B	169, 147, 117
Decimal	11110517
CIE Lab	59.28, 9.70, 14.95
CIE LCh	59, 17.819, 57.031
Yxy	27.3277, 0.3718, 0.3581
Android (android.graphics.Color)	4289300597 (0xFFA98875)
YUV	143.7010, -13.1636, 22.1872
Hunter-Lab	52.2759, 5.3996, 13.2154

# Details

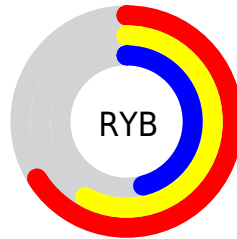
The Yxy color  $27.3277, 0.3718, 0.3581$  is a dark color, and the websafe version is hex `CC9999`. A complement of this color would be  $28.4488, 0.2659, 0.2978$ , and the grayscale version is  $27.8096, 0.3127, 0.3290$ .

A 20% lighter version of the original color is  $55.2673, 0.3595, 0.3522$ , and  $10.7983, 0.3933, 0.3660$  is the 20% darker color. If you saturate the color by 10%, you get  $24.0968, 0.3975, 0.3679$ , and if you desaturate by 10%, it is  $30.9348, 0.3495, 0.3482$ .

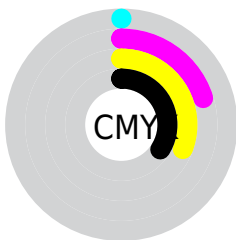
# Distribution



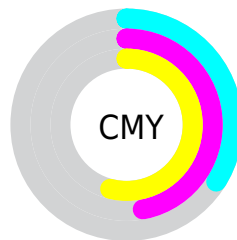
- Red (66%)
- Green (53%)
- Blue (46%)



- Red (66%)
- Yellow (58%)
- Blue (46%)



- Cyan (0%)
- Magenta (20%)
- Yellow (31%)
- Black (34%)




- Cyan (34%)
- Magenta (47%)
- Yellow (54%)

# Brightness & Saturation Gradients

These gradients show how the Yxy color 27.3277, 0.3718, 0.3581 changes by changing the brightness by 10 percent. The first figure shows a shift by +10% for each color and the second figure -10%.


Similar to the brightness gradients but the following saturation gradients show a change of the Yxy color 27.3277, 0.3718, 0.3581 by changing the saturation by 10% instead.





 27.3277, 0.3718,  
0.3581


 27.3277, 0.3718,  
0.3581


289.2403, 0.3394,  
0.3429


 17.8195, 0.3809,  
0.3620


 55.4093, 0.3593,  
0.3525

 10.8205, 0.3933,  
0.3671


 74.7514, 0.3548,  
0.3504

 5.9462, 0.4110,  
0.3739


 98.1403, 0.3511,  
0.3486

 2.8124, 0.4382,  
0.3830

125.9604, 0.3480,  
0.3471

 1.0346, 0.5341,  
0.4351

158.5961, 0.3454,  
0.3459

 0.0000, 1.0000,  
0.0000

196.4317, 0.3431,

 0.0000, 0.0000,

0.3448

0.0000

239.8516, 0.3412,  
0.3438

■ 27.3277, 0.3718,  
0.3581

■ 27.3277, 0.3718,  
0.3581

■ 24.0968, 0.3975,  
0.3679

■ 30.9348, 0.3495,  
0.3482

■ 21.2256, 0.4265,  
0.3771

■ 34.9263, 0.3303,  
0.3387

■ 18.7020, 0.4583,  
0.3846

■ 39.3149, 0.3138,  
0.3297


■ 16.5114, 0.4917,  
0.3894


■ 44.1117, 0.2998,  
0.3213

■ 14.6383, 0.5246,  
0.3903

■ 49.3270, 0.2879,  
0.3136


 13.0655, 0.5543,  
0.3863

 54.9711, 0.2776,  
0.3065

 11.8551, 0.5780,  
0.3793

 61.0537, 0.2688,  
0.3001

 67.5842, 0.2612,  
0.2942

 73.6309, 0.2614,  
0.3036

# Harmonies

## Analogous

The Analogous color harmony consists of three colors that are next to each other on the color wheel.



27.3277, 0.3663, 0.3340



27.3277, 0.3718, 0.3581



27.3277, 0.3606, 0.3762

# Triad

The Triadic color harmony groups three colors that are evenly spaced from another and form a triangle on the color wheel.



27.3277, 0.3718, 0.3581



27.3277, 0.2798, 0.3486



27.3277, 0.2873, 0.2807

# Complementary

The Complementary color scheme is a pair of colors which are on the opposite of each other on the color wheel.



27.3277, 0.3718, 0.3581



28.4488, 0.2659, 0.2978

# Split Complementary

Split-complementary colors differ from the complementary color scheme. The scheme consists of three colors, the original color and two neighbors of the complement color.



27.3277, 0.2660, 0.2822



27.3277, 0.3718, 0.3581



27.3277, 0.2618, 0.3202

# Square

The Square scheme is like the rectangle color scheme, but the four colors are evenly spaced on the color wheel.



27.3277, 0.3718, 0.3581



27.3277, 0.3070, 0.3721



27.3277, 0.2569, 0.2960



27.3277, 0.3163, 0.2907



# Rectangle

The Rectangle color scheme consists of four colors that form a rectangle on the color wheel.



27.3277, 0.3718, 0.3581



27.3277, 0.3457, 0.3818



27.3277, 0.2569, 0.2960



27.3277, 0.2790, 0.2798

# Sweetspot

The Sweet Spot groups the original color and five complimentary colors.



27.3290, 0.3718, 0.3581



63.7761, 0.3275, 0.3372



23.3845, 0.3372, 0.2788



13.6694, 0.3299, 0.3385



84.8088, 0.3127, 0.3290



15.4872, 0.3127, 0.3290



# Same Dimension

The Same Dimension uses a secret algorithm to generate beautiful new colors.



27.3290, 0.3718, 0.3581



44.8904, 0.3892, 0.3649



35.2684, 0.3612, 0.3938



7.9748, 0.3277, 0.3373



8.9334, 0.5761, 0.3807



0.3149, 0.5149, 0.4293



# Inverse Universe

The Inverse Universe completely reimagines the original color for something new.



28.4488, 0.2659, 0.2978



47.2116, 0.2556, 0.2896



21.2642, 0.2610, 0.2545



8.0637, 0.2987, 0.3206



10.1064, 0.1908, 0.2068

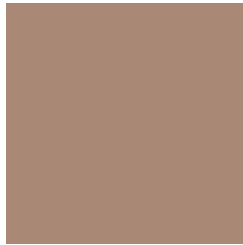


0.3382, 0.2033, 0.2519



# Previews

## White Background



This preview shows how the Yxy color 27.3277, 0.3718, 0.3581 looks on a white background.

## Color Contrast Check

Large Text (above 18pt) WCAG AA ✓ Pass

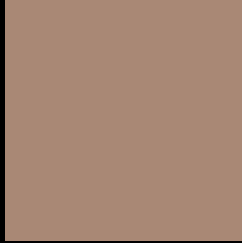
Any Text WCAG AA ✗ Fail

Large Text (above 18pt) WCAG AAA ✗ Fail

Any Text WCAG AAA ✗ Fail



# Black Background



This preview shows how the Yxy color 27.3277, 0.3718, 0.3581 looks on a black background.

## Color Contrast Check

Large Text (above 18pt) WCAG AA ✓ Pass

Any Text WCAG AA ✓ Pass

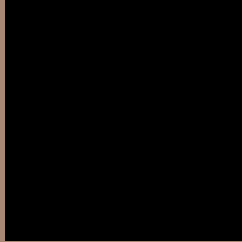
Large Text (above 18pt) WCAG AAA ✓ Pass

Any Text WCAG AAA × Fail

If you want to check with other color combinations, try the [Color Contrast Checker](#).

**Yxy 27.3277, 0.3718, 0.3581**

## Background



This preview shows how black text looks on a background with the Yxy color 27.3277, 0.3718, 0.3581.



This preview shows how white text looks on a background with the Yxy color 27.3277, 0.3718, 0.3581.

# Color Blindness Simulation

Color vision deficiency is a very complex topic, and I could not describe the different causes any better than Wikipedia does, so if you want to learn more, you should check out their [article about color blindness](#).

## Dichromacy



### Original Color

27.3277, 0.3718, 0.3581

### Protanopia

27.5803, 0.3451, 0.3664

### Deuteranopia

27.2827, 0.3679, 0.3600



## Tritanopia

27.2564, 0.3469, 0.3128

# Trichromacy



## Original Color

27.3277, 0.3718, 0.3581

## Protanomaly

27.3572, 0.3551, 0.3624

## Deuteranomaly

27.3912, 0.3691, 0.3598

## Tritanomaly

27.1542, 0.3558, 0.3276

# Monochromacy



## Original Color

27.3277, 0.3718, 0.3581

## Achromatopsia

27.8894, 0.3127, 0.3290

## Achromatomaly

27.5433, 0.3331, 0.3402

# CSS Examples

## Text

The CSS property to change the color of the text to Yxy 27.3277, 0.3718, 0.3581 is called "color". The color property can be set on classes, ids or directly on the HTML element.

This example shows how text in the color `rgb(169, 136, 117)` looks like.

```
.text, #text, p{  
    color:rgb(169, 136, 117)  
}
```

If you want to add a text shadow in that color use the text-shadow property, you can generate a text shadow directly with our [CSS Text Shadow Generator](#).

Here you see how black text with a 4 pixel rgb(169, 136, 117) colored shadow looks like.

```
.shadow{ text-shadow: 4px 4px 2px rgb(169, 136, 117) }
```

## Border

The CSS property to change the border of an element to Yxy 27.3277, 0.3718, 0.3581 is called "border". The border property can be set on classes, ids or directly on the HTML element.

This example shows the color as border, it can be applied via the CSS property "border" or "border-color".

```
.border, #border, table{ border:4px solid rgb(169, 136, 117) }
```

If only the border color should be changed use the property `border-color`.

```
.border{ border-color:rgb(169, 136, 117) }
```

If you want to add a box shadow in that color use:

Here you see how a box with a 4 pixel `rgb(169, 136, 117)` colored shadow looks like.

```
.boxshadow{ -moz-box-shadow:4px 4px 4px  
4px rgb(169, 136, 117); -webkit-box-  
shadow:4px 4px 4px 4px rgb(169, 136, 117);  
box-shadow:4px 4px 4px 4px rgb(169, 136,  
117) }
```



# Background

The CSS property to change the background color of an element to Yxy 27.3277, 0.3718, 0.3581 is called "background". The background property can be set on classes, ids or directly on the HTML element.

```
.background, #background, body{  
background: rgb(169, 136, 117) }
```

If only the background color should be changed can be used:

```
.background{ background-color: rgb(169,  
136, 117) }
```

This example shows the color as background, it is applied via the CSS property "background".

To optimize and compress your CSS code, you can use our [online CSS compressor and optimizer](#) based on csstidy. If you want to create a linear or radial gradient as background or border, check our [CSS Gradient Generator](#).

Hey! You found this booklet interesting? Support Converting Colors with the new Membership Option!

The pro membership hides all ads, plus gives you double the colors in the color bucket, and more awesome pro features!

**[Learn more, Memberships starting at \\$2.50/m!](#)**

**Follow me  
on Twitter!**

@ConvertingColor