

Converting Colors

$Y_{xy}(27.3557, 0.4232, 0.3828)$

Have a look what the booklet for
Yxy(27.3557, 0.4232, 0.3828)
contains.

Yxy(27.4444, 0.4233, 0.3835)	3
Conversions	4
Details	6
Harmonies	12
Previews	24
Color Blindness Simulation	27
CSS Examples	30

Color

Yxy(27.4444, 0.4233, 0.3835)

Conversions

Conversions Part 1

Format	Color
Hex	BA835C
RGB	186, 131, 92
RGB Percent	73%, 51%, 36%
CMY	0.2707, 0.4862, 0.6392
CMYK	0.00, 0.30, 0.51, 0.27
HSL	25°, 40%, 55%
HSV	25°, 51%, 73%
XYZ	30.2926, 27.4444, 13.8260
YIQ	142.9990, 45.2990, -0.4690

Conversions

Conversions Part 2

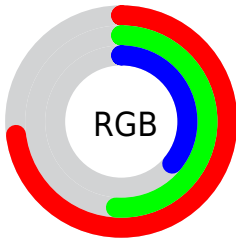
Format	Color
R_{YB}	186, 159, 92
Decimal	12223324
CIE _{Lab}	59.38, 16.61, 29.45
CIE _{LCh}	59, 33.806, 60.578
Yxy	27.4444, 0.4233, 0.3835
Android (android.graphics.Color)	4290413404 (0xFFBA835C)
YUV	142.9990, -25.1425, 37.7119
Hunter-Lab	52.3874, 11.5383, 21.0235

Details

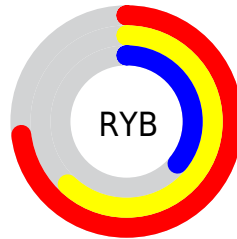
The Yxy color **27.4444, 0.4233, 0.3835** is a dark color, and the websafe version is hex **CC9966**. A complement of this color would be **26.6726, 0.2353, 0.2648**, and the grayscale version is **27.5570, 0.3127, 0.3290**.

A 20% lighter version of the original color is **55.4972, 0.4001, 0.3738**, and **10.8201, 0.4615, 0.3956** is the 20% darker color. If you saturate the color by 10%, you get **24.3892, 0.4534, 0.3923**, and if you desaturate by 10%, it is **30.8888, 0.3955, 0.3731**.

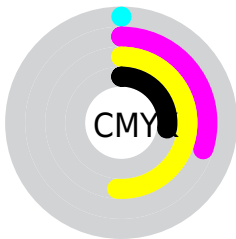
Distribution



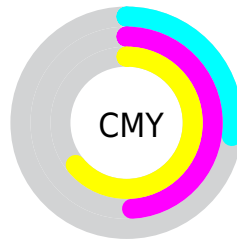
- Red (73%)
- Green (51%)
- Blue (36%)



- Red (73%)
- Yellow (62%)
- Blue (36%)



- Cyan (0%)
- Magenta (30%)
- Yellow (51%)
- Black (27%)





- Cyan (27%)
- Magenta (49%)
- Yellow (64%)

Brightness & Saturation Gradients


These gradients show how the Yxy color 27.4444, 0.4233, 0.3835 changes by changing the brightness by 10 percent. The first figure shows a shift by +10% for each color and the second figure -10%.


Similar to the brightness gradients but the following saturation gradients show a change of the Yxy color 27.4444, 0.4233, 0.3835 by changing the saturation by 10% instead.


 27.4444, 0.4233,
0.3835


 27.4444, 0.4233,
0.3835


289.8024, 0.3633,
0.3567


 17.9073, 0.4395,
0.3895


 55.5962, 0.4005,
0.3741

 10.8834, 0.4609,
0.3963


 74.9796, 0.3922,
0.3705

 5.9885, 0.4898,
0.4036

 98.4139, 0.3853,
0.3673

 2.8381, 0.5414,
0.4177

 126.2835, 0.3795,
0.3646

 1.0478, 0.5922,
0.4078

158.9727, 0.3746,
0.3623

 0.0000, 1.0000,
0.0000

196.8660, 0.3703,

 0.0000, 0.0000,

0.3602

0.0000

240.3478, 0.3665,
0.3583

■ 27.4444, 0.4233,
0.3835

■ 27.4444, 0.4233,
0.3835

■ 24.3892, 0.4534,
0.3923

■ 30.8888, 0.3955,
0.3731

■ 21.7039, 0.4847,
0.3981

■ 34.7327, 0.3707,
0.3619

■ 19.3730, 0.5153,
0.3998

■ 38.9910, 0.3488,
0.3507

■ 17.3782, 0.5429,
0.3965

■ 43.6765, 0.3299,
0.3398

■ 15.7736, 0.5654,
0.3893

■ 48.8014, 0.3135,
0.3295

■ 54.3775, 0.2995,
0.3200

■ 60.4159, 0.2874,
0.3111

■ 66.9274, 0.2770,
0.3031

■ 73.6374, 0.2703,
0.3003

Harmonies

Analogous

The Analogous color harmony consists of three colors that are next to each other on the color wheel.



27.4444, 0.4181, 0.3401



27.4444, 0.4233, 0.3835



27.4444, 0.3967, 0.4187

Triad

The Triadic color harmony groups three colors that are evenly spaced from another and form a triangle on the color wheel.



27.4444, 0.4233, 0.3835



27.4444, 0.2458, 0.3596



27.4444, 0.2702, 0.2436

Complementary

The Complementary color scheme is a pair of colors which are on the opposite of each other on the color wheel.



27.4444, 0.4233, 0.3835



26.6726, 0.2353, 0.2648

Split Complementary

Split-complementary colors differ from the complementary color scheme. The scheme consists of three colors, the original color and two neighbors of the complement color.



27.4444, 0.2308, 0.2420



27.4444, 0.4233, 0.3835



27.4444, 0.2175, 0.3032

Square

The Square scheme is like the rectangle color scheme, but the four colors are evenly spaced on the color wheel.



27.4444, 0.4233, 0.3835



27.4444, 0.2933, 0.4103



27.4444, 0.2125, 0.2617



27.4444, 0.3249, 0.2635

Rectangle

The Rectangle color scheme consists of four colors that form a rectangle on the color wheel.



27.4444, 0.4233, 0.3835



27.4444, 0.3662, 0.4308



27.4444, 0.2125, 0.2617



27.4444, 0.2549, 0.2408

Sweetspot

The Sweet Spot groups the original color and five complimentary colors.



27.4457, 0.4233, 0.3835



75.0864, 0.3385, 0.3449



20.2403, 0.3671, 0.2523



16.1417, 0.3425, 0.3472



95.5105, 0.3127, 0.3290



19.5994, 0.3127, 0.3290

Same Dimension

The Same Dimension uses a secret algorithm to generate beautiful new colors.



27.4457, 0.4233, 0.3835



43.4594, 0.4580, 0.3933



42.4845, 0.3913, 0.4397



9.6084, 0.3278, 0.3385



10.7563, 0.5631, 0.3911



0.5020, 0.5173, 0.4275

Inverse Universe

The Inverse Universe completely reimagines the original color for something new.



26.6726, 0.2353, 0.2648



41.8354, 0.2198, 0.2470



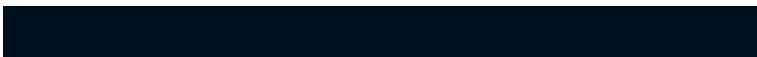
15.2043, 0.2202, 0.1863



9.5685, 0.2985, 0.3193



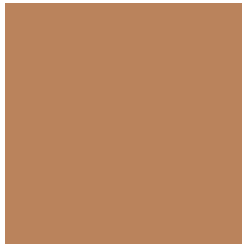
9.8612, 0.1858, 0.1889



0.4667, 0.1969, 0.2289

Previews

White Background



This preview shows how the Yxy color 27.4444, 0.4233, 0.3835 looks on a white background.

Color Contrast Check

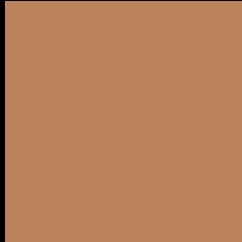
Large Text (above 18pt) WCAG AA ✓ Pass

Any Text WCAG AA × Fail

Large Text (above 18pt) WCAG AAA × Fail

Any Text WCAG AAA × Fail

Black Background



This preview shows how the Yxy color 27.4444, 0.4233, 0.3835 looks on a black background.

Color Contrast Check

Large Text (above 18pt) WCAG AA ✓ Pass

Any Text WCAG AA ✓ Pass

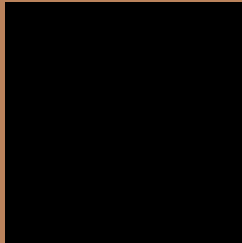
Large Text (above 18pt) WCAG AAA ✓ Pass

Any Text WCAG AAA × Fail

If you want to check with other color combinations, try the [Color Contrast Checker](#).

Yxy 27.4444, 0.4233, 0.3835

Background



This preview shows how black text looks on a background with the Yxy color 27.4444, 0.4233, 0.3835.



This preview shows how white text looks on a background with the Yxy color 27.4444, 0.4233, 0.3835.

Color Blindness Simulation

Color vision deficiency is a very complex topic, and I could not describe the different causes any better than Wikipedia does, so if you want to learn more, you should check out their [article about color blindness](#).

Dichromacy



Original Color

27.4444, 0.4233, 0.3835

Protanopia

27.4766, 0.3736, 0.4026

Deuteranopia

27.5309, 0.4048, 0.3971



Tritanopia

27.3637, 0.3796, 0.3153

Trichromacy



Original Color

27.4444, 0.4233, 0.3835

Protanomaly

27.3985, 0.3910, 0.3964

Deuteranomaly

27.5483, 0.4121, 0.3927

Tritanomaly

27.3295, 0.3974, 0.3404

Monochromacy



Original Color

27.4444, 0.4233, 0.3835

Achromatopsia

27.4677, 0.3127, 0.3290

Achromatomaly

27.2914, 0.3512, 0.3528

CSS Examples

Text

The CSS property to change the color of the text to Yxy 27.4444, 0.4233, 0.3835 is called "color". The color property can be set on classes, ids or directly on the HTML element.

This example shows how text in the color `rgb(186, 131, 92)` looks like.

```
.text, #text, p{  
    color:rgb(186, 131, 92)  
}
```

If you want to add a text shadow in that color use the text-shadow property, you can generate a text shadow directly with our [CSS Text Shadow Generator](#).

Here you see how black text with a 4 pixel rgb(186, 131, 92) colored shadow looks like.

```
.shadow{ text-shadow: 4px 4px 2px rgb(186, 131, 92) }
```

Border

The CSS property to change the border of an element to Yxy 27.4444, 0.4233, 0.3835 is called "border". The border property can be set on classes, ids or directly on the HTML element.

This example shows the color as border, it can be applied via the CSS property "border" or "border-color".

```
.border, #border, table{ border:4px solid rgb(186, 131, 92) }
```

If only the border color should be changed use the property `border-color`.

```
.border{ border-color:rgb(186, 131, 92) }
```

If you want to add a box shadow in that color use:

Here you see how a box with a 4 pixel `rgb(186, 131, 92)` colored shadow looks like.

```
.boxshadow{ -moz-box-shadow:4px 4px 4px  
4px rgb(186, 131, 92); -webkit-box-  
shadow:4px 4px 4px 4px rgb(186, 131, 92);  
box-shadow:4px 4px 4px 4px rgb(186, 131,  
92) }
```


Background

The CSS property to change the background color of an element to Yxy 27.4444, 0.4233, 0.3835 is called "background". The background property can be set on classes, ids or directly on the HTML element.

```
.background, #background, body{  
background: rgb(186, 131, 92) }
```

If only the background color should be changed can be used:

```
.background{ background-color: rgb(186,  
131, 92) }
```

This example shows the color as background, it is applied via the CSS property "background".

To optimize and compress your CSS code, you can use our [online CSS compressor and optimizer](#) based on csstidy. If you want to create a linear or radial gradient as background or border, check our [CSS Gradient Generator](#).

Hey! You found this booklet interesting? Support Converting Colors with the new Membership Option!

The pro membership hides all ads, plus gives you double the colors in the color bucket, and more awesome pro features!

[Learn more, Memberships starting at \\$2.50/m!](#)

**Follow me
on Twitter!**

@ConvertingColor