

# Converting Colors

$Y_{xy}(27.4162, 0.4082, 0.3846)$

Have a look what the booklet for  
Yxy(27.4162, 0.4082, 0.3846)  
contains.

<b>Yxy(27.3597, 0.4074, 0.3844)</b> .....	3
<b>Conversions</b> .....	4
<b>Details</b> .....	6
<b>Harmonies</b> .....	12
<b>Previews</b> .....	24
<b>Color Blindness Simulation</b> .....	27
<b>CSS Examples</b> .....	30

**Color**

**Yxy(27.3597, 0.4074, 0.3844)**

# Conversions

## Conversions Part 1

<b>Format</b>	<b>Color</b>
Hex	B28660
RGB	178, 134, 96
RGB Percent	70%, 53%, 38%
CMY	0.3020, 0.4745, 0.6235
CMYK	0.00, 0.25, 0.46, 0.30
HSL	28°, 35%, 54%
HSV	28°, 46%, 70%
XYZ	28.9967, 27.3597, 14.8187
YIQ	142.8240, 38.4220, -2.4900

# Conversions

## Conversions Part 2

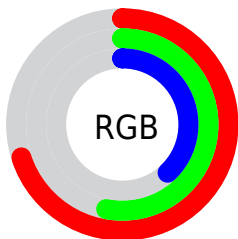
<b>Format</b>	<b>Color</b>
<b>R<sub>YB</sub></b>	178, 167, 96
Decimal	11699808
CIE Lab	59.31, 12.00, 26.96
CIE LCh	59, 29.512, 66.007
Yxy	27.3597, 0.4074, 0.3844
Android (android.graphics.Color)	4289889888 (0xFFB28660)
YUV	142.8240, -23.0842, 30.8494
Hunter-Lab	52.3065, 7.4172, 19.8174

# Details

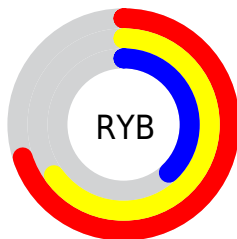
The Yxy color **27.3597, 0.4074, 0.3844** is a dark color, and the websafe version is hex **CC9966**. A complement of this color would be **24.4565, 0.2408, 0.2648**, and the grayscale version is **27.4773, 0.3127, 0.3290**.

A 20% lighter version of the original color is **55.3094, 0.3875, 0.3740**, and **10.7734, 0.4401, 0.3986** is the 20% darker color. If you saturate the color by 10%, you get **24.5473, 0.4348, 0.3952**, and if you desaturate by 10%, it is **30.4874, 0.3822, 0.3724**.

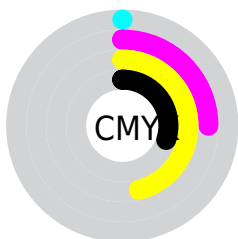
# Distribution



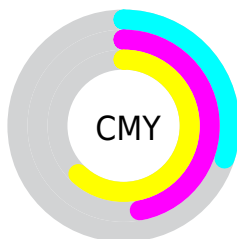
- Red (70%)
- Green (53%)
- Blue (38%)



- Red (70%)
- Yellow (65%)
- Blue (38%)



- Cyan (0%)
- Magenta (25%)
- Yellow (46%)
- Black (30%)




- Cyan (30%)
- Magenta (47%)
- Yellow (62%)


# Brightness & Saturation Gradients

These gradients show how the Yxy color 27.3597, 0.4074, 0.3844 changes by changing the brightness by 10 percent. The first figure shows a shift by +10% for each color and the second figure -10%.


Similar to the brightness gradients but the following saturation gradients show a change of the Yxy color 27.3597, 0.4074, 0.3844 by changing the saturation by 10% instead.





 27.3597, 0.4074,  
0.3844


 27.3597, 0.4074,  
0.3844


289.3945, 0.3559,  
0.3562


 17.8436, 0.4214,  
0.3912


 55.4605, 0.3878,  
0.3742

 10.8377, 0.4400,  
0.3995


 74.8140, 0.3807,  
0.3704

 5.9578, 0.4654,  
0.4094

 98.2154, 0.3748,  
0.3671

 2.8194, 0.5078,  
0.4255

 126.0490, 0.3698,  
0.3643

 1.0382, 0.5652,  
0.4348

158.6994, 0.3656,  
0.3618

 0.0000, 1.0000,  
0.0000

196.5508, 0.3619,

 0.0000, 0.0000,

0.3597

0.0000

239.9877, 0.3588,  
0.3579

■ 27.3597, 0.4074,  
0.3844

■ 27.3597, 0.4074,  
0.3844

■ 24.5473, 0.4348,  
0.3952

■ 30.4874, 0.3822,  
0.3724

■ 22.0350, 0.4636,  
0.4036

■ 33.9371, 0.3596,  
0.3599

■ 19.8118, 0.4923,  
0.4085

■ 37.7202, 0.3396,  
0.3476

■ 17.8641, 0.5191,  
0.4086

■ 41.8462, 0.3222,  
0.3358

■ 16.1763, 0.5423,  
0.4034

■ 46.3243, 0.3070,  
0.3247

■ 15.5748, 0.5510,  
0.4007

■ 51.1632, 0.2939,  
0.3144

■ 56.3714, 0.2825,  
0.3050

■ 61.9569, 0.2726,  
0.2963

■ 67.8499, 0.2646,  
0.2896

# Harmonies

## Analogous

The Analogous color harmony consists of three colors that are next to each other on the color wheel.



27.3597, 0.4078, 0.3467



27.3597, 0.4074, 0.3844



27.3597, 0.3803, 0.4118

# Triad

The Triadic color harmony groups three colors that are evenly spaced from another and form a triangle on the color wheel.



27.3597, 0.4074, 0.3844



27.3597, 0.2480, 0.3468



27.3597, 0.2836, 0.2552

# Complementary

The Complementary color scheme is a pair of colors which are on the opposite of each other on the color wheel.



27.3597, 0.4074, 0.3844



24.4565, 0.2408, 0.2648

# Split Complementary

Split-complementary colors differ from the complementary color scheme. The scheme consists of three colors, the original color and two neighbors of the complement color.



27.3597, 0.2454, 0.2510



27.3597, 0.4074, 0.3844



27.3597, 0.2261, 0.2992

# Square

The Square scheme is like the rectangle color scheme, but the four colors are evenly spaced on the color wheel.



27.3597, 0.4074, 0.3844



27.3597, 0.2877, 0.3927



27.3597, 0.2254, 0.2655



27.3597, 0.3329, 0.2757



# Rectangle

The Rectangle color scheme consists of four colors that form a rectangle on the color wheel.



27.3597, 0.4074, 0.3844



27.3597, 0.3520, 0.4184



27.3597, 0.2254, 0.2655



27.3597, 0.2692, 0.2519

# Sweetspot

The Sweet Spot groups the original color and five complimentary colors.



27.3610, 0.4074, 0.3844



69.7211, 0.3363, 0.3454



19.7570, 0.3661, 0.2644



15.1048, 0.3402, 0.3480



91.1408, 0.3127, 0.3290



17.8868, 0.3127, 0.3290



# Same Dimension

The Same Dimension uses a secret algorithm to generate beautiful new colors.



27.3610, 0.4074, 0.3844



44.5704, 0.4345, 0.3951



40.5436, 0.3821, 0.4353



9.1327, 0.3276, 0.3396



11.2672, 0.5491, 0.4022



0.4716, 0.5040, 0.4380



# Inverse Universe

The Inverse Universe completely reimagines the original color for something new.



24.4565, 0.2408, 0.2648



38.6462, 0.2262, 0.2479



14.8347, 0.2283, 0.1944



8.9600, 0.2985, 0.3182



8.3482, 0.1812, 0.1725

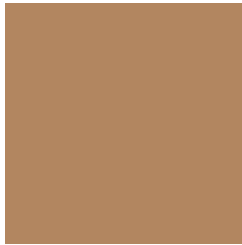


0.3780, 0.1946, 0.2203



# Previews

## White Background



This preview shows how the Yxy color 27.3597, 0.4074, 0.3844 looks on a white background.

## Color Contrast Check

Large Text (above 18pt) WCAG AA ✓ Pass

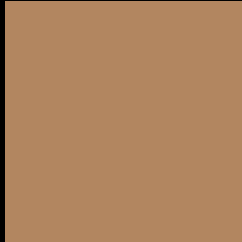
Any Text WCAG AA ✗ Fail

Large Text (above 18pt) WCAG AAA ✗ Fail

Any Text WCAG AAA ✗ Fail



# Black Background



This preview shows how the Yxy color 27.3597, 0.4074, 0.3844 looks on a black background.

## Color Contrast Check

Large Text (above 18pt) WCAG AA ✓ Pass

Any Text WCAG AA ✓ Pass

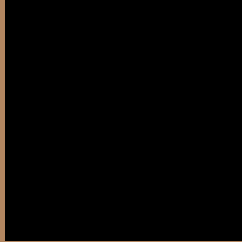
Large Text (above 18pt) WCAG AAA ✓ Pass

Any Text WCAG AAA × Fail

If you want to check with other color combinations, try the [Color Contrast Checker](#).

**Yxy 27.3597, 0.4074, 0.3844**

## Background



This preview shows how black text looks on a background with the Yxy color 27.3597, 0.4074, 0.3844.



This preview shows how white text looks on a background with the Yxy color 27.3597, 0.4074, 0.3844.

# Color Blindness Simulation

Color vision deficiency is a very complex topic, and I could not describe the different causes any better than Wikipedia does, so if you want to learn more, you should check out their [article about color blindness](#).

## Dichromacy



### Original Color

27.3597, 0.4074, 0.3844

### Protanopia

27.4350, 0.3694, 0.3982

### Deuteranopia

27.4882, 0.3994, 0.3917



## Tritanopia

27.4806, 0.3652, 0.3163

# Trichromacy



## Original Color

27.3597, 0.4074, 0.3844

## Protanomaly

27.4435, 0.3826, 0.3928

## Deuteranomaly

27.4332, 0.4024, 0.3897

## Tritanomaly

27.4864, 0.3812, 0.3408

# Monochromacy



## Original Color

27.3597, 0.4074, 0.3844

## Achromatopsia

27.4677, 0.3127, 0.3290

## Achromatomaly

27.3304, 0.3452, 0.3514

# CSS Examples

## Text

The CSS property to change the color of the text to Yxy 27.3597, 0.4074, 0.3844 is called "color". The color property can be set on classes, ids or directly on the HTML element.

This example shows how text in the color `rgb(178, 134, 96)` looks like.

```
.text, #text, p{  
    color:rgb(178, 134, 96)  
}
```

If you want to add a text shadow in that color use the text-shadow property, you can generate a text shadow directly with our [CSS Text Shadow Generator](#).

Here you see how black text with a 4 pixel rgb(178, 134, 96) colored shadow looks like.

```
.shadow{ text-shadow: 4px 4px 2px rgb(178, 134, 96) }
```

## Border

The CSS property to change the border of an element to Yxy 27.3597, 0.4074, 0.3844 is called "border". The border property can be set on classes, ids or directly on the HTML element.

This example shows the color as border, it can be applied via the CSS property "border" or "border-color".

```
.border, #border, table{ border:4px solid rgb(178, 134, 96) }
```

If only the border color should be changed use the property border-color.

```
.border{ border-color:rgb(178, 134, 96) }
```

If you want to add a box shadow in that color use:

Here you see how a box with a 4 pixel rgb(178, 134, 96) colored shadow looks like.

```
.boxshadow{ -moz-box-shadow:4px 4px 4px  
4px rgb(178, 134, 96); -webkit-box-  
shadow:4px 4px 4px 4px rgb(178, 134, 96);  
box-shadow:4px 4px 4px 4px rgb(178, 134,  
96) }
```



# Background

The CSS property to change the background color of an element to Yxy 27.3597, 0.4074, 0.3844 is called "background". The background property can be set on classes, ids or directly on the HTML element.

```
.background, #background, body{  
background: rgb(178, 134, 96) }
```

If only the background color should be changed can be used:

```
.background{ background-color: rgb(178,  
134, 96) }
```

This example shows the color as background, it is applied via the CSS property "background".

To optimize and compress your CSS code, you can use our [online CSS compressor and optimizer](#) based on csstidy. If you want to create a linear or radial gradient as background or border, check our [CSS Gradient Generator](#).

Hey! You found this booklet interesting? Support Converting Colors with the new Membership Option!

The pro membership hides all ads, plus gives you double the colors in the color bucket, and more awesome pro features!

**[Learn more, Memberships starting at \\$2.50/m!](#)**

**Follow me  
on Twitter!**

@ConvertingColor